

PARTS BOOK

FOR 1-NEEDLE,
NEEDLE FEED LOCK-STITCH MACHINE SERIES

KM-350A-7S KM-350A-7N

KM-350B-7S KM-350B-7N

KM-350A

KM-350B



INFORMATION

A. Parts Book 구성 Structure of Part Book

① **A** Machine Body Mechanism
두부 및 외장 관계

No.	Parts No.	Note.	Name of Parts	품 명	Q'ty		Assembly No.
					BS	BP	
A-52	435025-300H		Bobbin Winder Lever	실감기 레버	1	1	
A-53	435015-300H		Bobbin Winder Adjusting Plate	실감기 조정판	1	1	
A-54	SC-03D-1230		Screw(L/8" n=40)	볼트 (원사)	1	1	
A-55	02-01W-2302		Washer	와셔	1	1	
A-56	435035-300H		Bobbin Winder Lever Shaft	실감기 레버 축	1	1	
A-57	435045-300H		Bobbin Winder Adjusting Cam	실감기 조정 캠	1	1	
A-58	035030-4113		Screw(M4xW16.7)	원사	1	1	
A-59	04-00C-3710		E-Ring(#3)	E-링 (호링)	2	2	
A-60	435075-300H		Bobbin Winder Action Plate	실감기 작동판	1	1	
A-61	41-05A-120H		Bobbin Winder Action Body	실감기 작동체	1	1	
A-62	40-00W-1000		Washer	와셔	2	2	
A-63	435025-300H		Bobbin Winder Spring	실감기 인장 스프링	1	1	
A-64	435025-300H		Bobbin Stopper	보빈 스톱퍼	1	1	
A-65	435025-300H		Screw	원사	5	5	
A-66	435025-300H		Bobbin Stand	보빈 스탠드	1	1	
A-67	435025-300H		Bobbin Winder Mes	실감기 메스	1	1	
A-68	SC-0519-2302		Screw(L/8" n=40)	고양베스 양면 (원사)	2	2	
A-69	435025-300H		Thread Tension Adjusting Ass'y	실감기 인장 조정장치(조)	1set	1set	
A-70	435026-300H		Thread Tension Adjusting Shaft	실감기 인장척 조정 축	1	1	
A-71	435025-300H		Thread Guide Plate	실감기 안내 판	1	1	
A-72	40-33A-1230		Thread Tension Disk	실감기 안내 원	2	2	
A-73	40-33C-125A		Thread Tension Spring	실감기 인장 스프링	1	1	
A-74	40-80W-1230		Thread Tension Spring Stopper	실감기 인장 스프링 스톱퍼	1	1	
A-75	40-02A-1230		Spring Cover	스프링 커버	1	1	
A-76	40-33A-1250		Thread Tension Nut	실감기 인장척 너트	1	1	
A-77	SN-0121-7400		Nut(15/16" n=20)	실감기 인장척 너트	1	1	
A-78	035045-300H		Safety Plate Ass'y	안전판(조)	1set	1set	
A-79	035045-300H		Safety Plate	안전판	1	1	
A-80	035045-300H		Safety Plate Bracket	안전판 크래들	1	1	
A-81	035045-300H		Safety Plate Holder	안전판 홀더	1	1	
A-82	035045-300H		Safety Plate Hinge Screw	안전판 원사	1	1	
A-83	SN-0101-7400		Nut(1/2" n=20)	너트	3	3	
A-84	40-00W-1000		Washer	와셔	1	1	
A-85	035045-300H		Safety Plate Spring	안전판 스프링	1	1	
A-86	035025-300H		Safety Plate Spring Hook	안전판 스프링 걸이	1	1	
A-87	SN-0111-1000		Nut(1/2" n=20)	1/2"	1	1	
A-88	GP-01205-02		Bob Cover	보타커버	1	1	
A-89	SC-0405-1230		Screw(11/16" n=40)	원사	7	7	
A-90	GP-012215-00		X-Driving Motor Cover	X 구동 모터 커버	1	1	
A-91	GP-012217-00		Side Cover	옆뚜껑	1	1	
A-92	GP-012215-00		Side Cover Gasket	옆뚜껑 가스켓	1	1	

- ① 관계 별 고유 코드
Unique code by mechanism
- ② 관계 별 고유 명칭
Unique name by mechanism
- ③ 관계도
Explode view
- ④ Ref. No. : 파트별 고유 식별 번호
Unique identification number by part
- ⑤ Parts No. : 고유 제품 코드
Unique Product code

- ⑥ Note. : 공지사항 표기 및 메모
Refers to notice and memo
- ⑦ 품명 : 파트의 고유 품명
Name of Part : Unique name of parts
- ⑧ Q'ty : 파트의 수량
The numer of parts
- ⑨ Assembly no. : 조(組) 파트의 식별 번호
Unique identification number by set part

Ex)

구분 Category	Code	비고 Category
구 부품 Old part	01-030C-1230	
신 부품 New part	AS-000000-00	조(組)파트 Set parts
	GP-000000-00	기구적 파트 Instrumental parts
	EP-000000-00	전기적 파트 Electrical parts

WARNING

1. 조에 속한 파트는 개별 조립 시 제품의 파손 또는 재봉 불량 발생될 수 있어 해당 파트에 대한 주문 시에는 조 품목으로만 구입이 가능합니다.
2. 본 책자는 Part Book으로 제작되었으므로 매뉴얼로 사용 불가합니다.
3. 사전 예고 없이 사양이 변경 될 수도 있습니다.

1. The parts classified as ass'y items may cause damage to the machine or bad sewing when they are separately assembled. Hence, when they are ordered, they can be purchased as ass'y items only.
2. This is a parts book. It cannot be used as a manual.
3. Parts are Subject to change in Design Without Prior Notice.

MODEL

FOR THIN MATERIAL

- **KM-350A-7S**
1-NEEDLE, NEEDLE FEED LOCK-STITCH MACHINE
WITH THREAD TRIMMER DRIVEN BY SERVO MOTOR
- **KM-350A-7N**
1-NEEDLE, NEEDLE FEED LOCK-STITCH MACHINE
WITH THREAD TRIMMER DRIVEN BY NEEDLE POSITIONING MOTOR
- **KM-350A**
1-NEEDLE, NEEDLE FEED LOCK-STITCH MACHINE

FOR THICK MATERIAL

- **KM-350B-7S**
1-NEEDLE, NEEDLE FEED LOCK-STITCH MACHINE
WITH THREAD TRIMMER DRIVEN BY SERVO MOTOR
- **KM-350B-7N**
1-NEEDLE, NEEDLE FEED LOCK-STITCH MACHINE
WITH THREAD TRIMMER DRIVEN BY NEEDLE POSITIONING MOTOR
- **KM-350B**
1-NEEDLE, NEEDLE FEED LOCK-STITCH MACHINE

CONTENTS

목 차

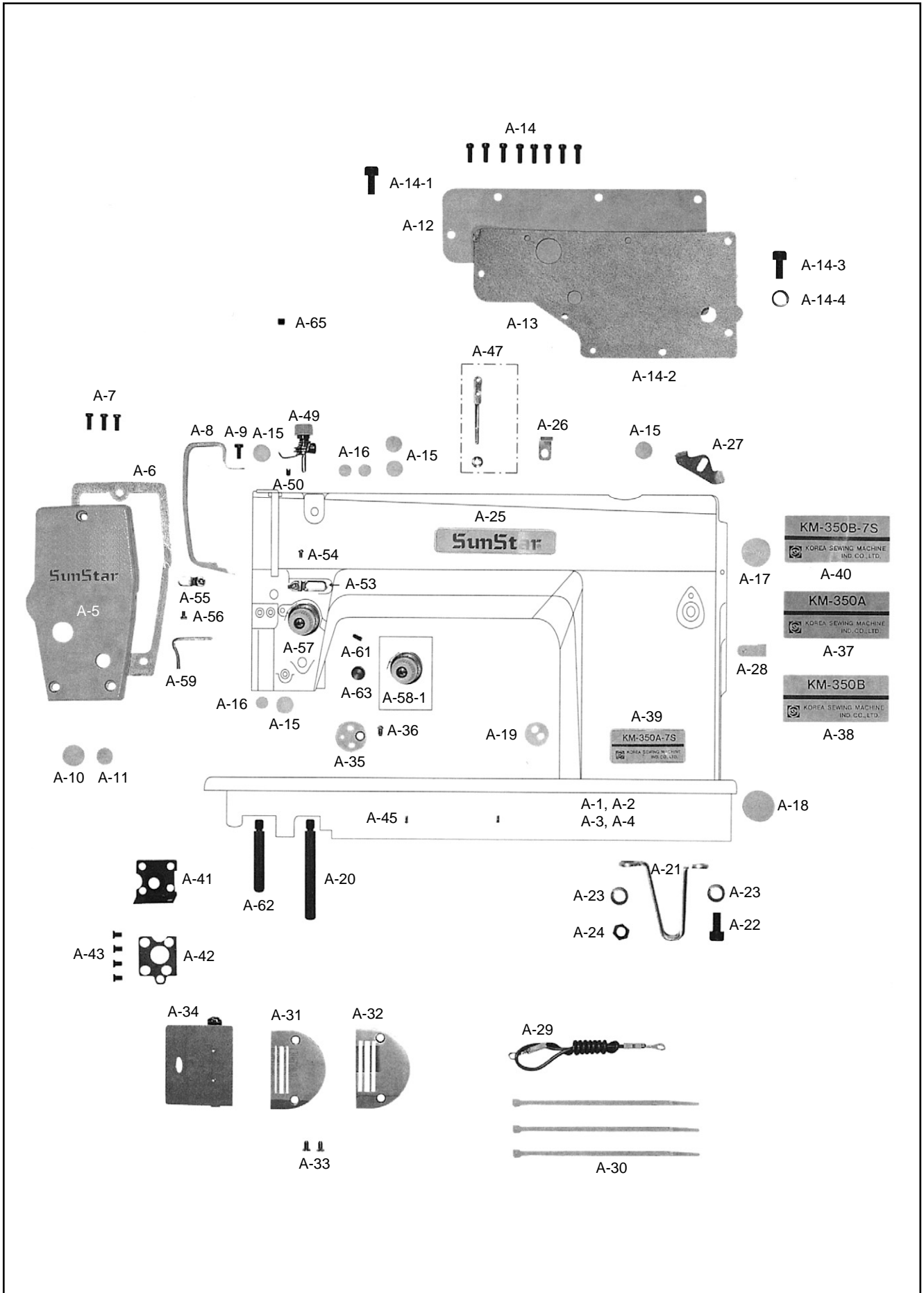
A	<i>Machine Body & Thread Tension Adjusting Mechanism</i> 외장 및 실장력 조절 관계.....	6
B	<i>Upper Shaft & Thread Take Up Lever Mechanism</i> 상축 및 실채기 관계	8
C	<i>Upright Shaft & Lower Shaft Mechanism</i> 세운 축 및 하축 관계.....	9
D	<i>Feed Mechanism</i> 피이드 관계	10
E	<i>Thread Trimmer Mechanism</i> 사절 관계.....	14
F	<i>Needle Bar Driving Mechanism</i> 바늘대 요동 관계.....	16
G	<i>Presser Foot & Tension Release Mechanism</i> 노루발 및 실 늦추기 관계.....	17
H	<i>Thread Wiper Mechanism</i> 와이프 관계	18
I	<i>Reverse Button Mechanism</i> 역진 버튼 관계	19
J	<i>Program Unit Box & Auto Presser</i> <i>Lifting Solenoid Mechanism(Option Parts:SPF-5)</i> 프로그램 유닛 박스 및 자동 무릎 올림 관계.....	20
K	<i>Lubrication</i> 급유 관계.....	21
L	<i>Accessories</i> 액세서리	22
M	<i>Special Parts For [KM-350A-7N · KM-350B-7N]</i> [KM-350A-7N · KM-350B-7N] 전용 부품 관계	24
	* INDEX.....	25

NOTE : Parts are Subject to change in Design Without Prior Notice.

- | |
|--|
| <ol style="list-style-type: none"> 1. 조에 속한 파트는 개별 조립 시 제품의 파손 또는 재봉 불량 발생될 수 있어 해당 파트에 대한 주문 시에는 조 품목으로만 구입이 가능합니다. 2. 본 책자는 Parts Book으로 제작되었으므로 매뉴얼로 사용 불가합니다. <ol style="list-style-type: none"> 1. The parts classified as ass'y items may cause damage to the machine or bad sewing when they are separately assembled. Hence, when they are ordered, they can be purchased as ass'y items only. 2. This is a parts book. It cannot be used as a manual. |
|--|

A

Machine Body & Thread Tension Adjusting Mechanism 외장 및 실장력 조절 관계



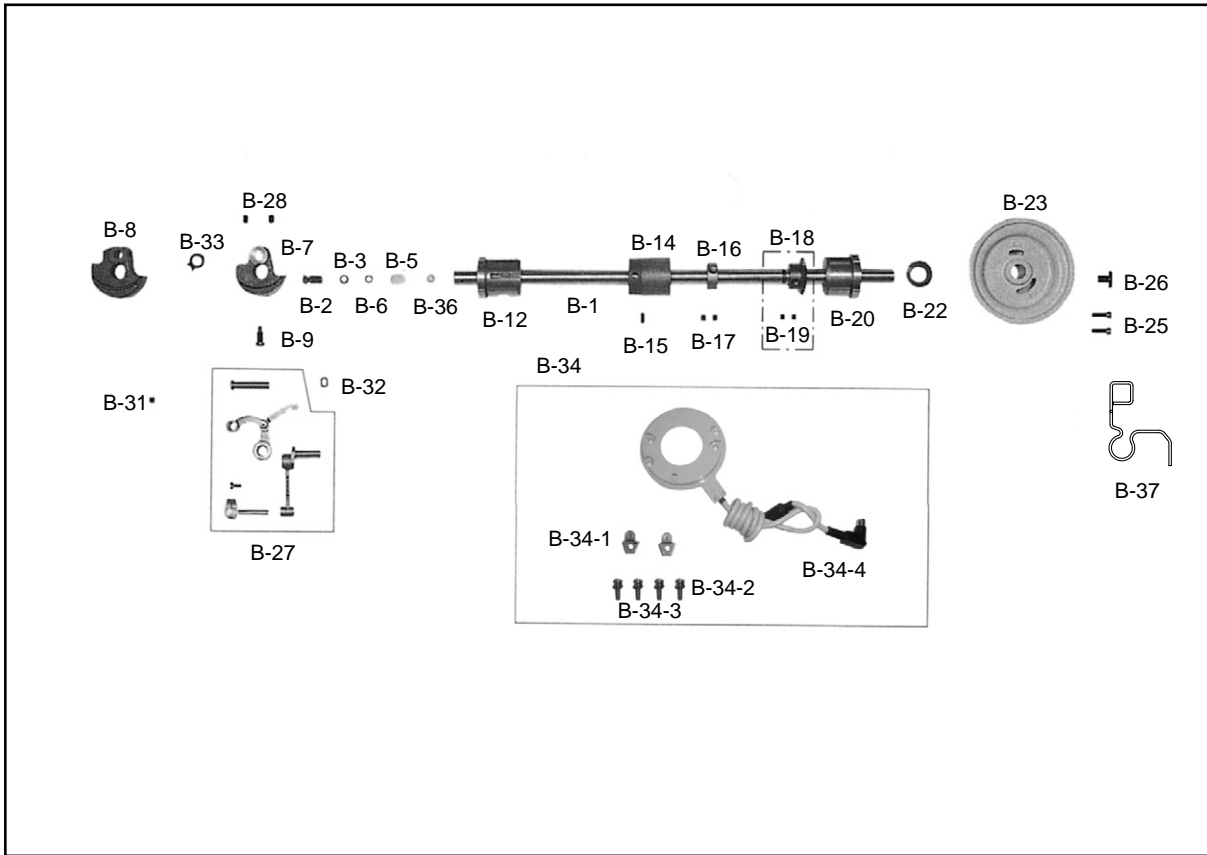
Ref. No.	Parts No.	Note	Name of Parts	품명	Q' ty	Applied Period
A-1	01-001A-350A		Arm. Bed	아암 베드	1	
A-2	AS-003742-00	A	Arm. Bed	아암 베드	1	
A-3	01-001A-357A	B	Arm. Bed	아암 베드	1	
A-4	AS-003741-00	A-7	Arm. Bed	아암 베드	1	
A-5	CMB-BJ006100	B-7	Face Plate	면판	1	
A-6	CMB-FC005700		Gasket For A-5	면판 가스켓	1	
A-7	DSC-BF008400		Screw(3/16" n=28)	홈볼이 납작 작은나사(3/16" n=28)	3	
A-8	CMB-LA004300		Thread Take Up Cover	실채기 커버	1	
A-9	DSC-BF000600		Screw(3/16" n=28)	홈볼이 납작 작은나사(3/16" n=28)	1	
A-10	DPK-CB000900		Face Plate Rubber Cap(L)	면판 고무마개 (대) 흰색(3-1)	1	
A-11	DPK-CB000200		Face Plate Rubber Cap(S)	면판 고무마개 (중) 흰색(3)	1	
A-12	CMB-LB003700		Back Cover	뒷뚜껑(STD OPTION)	1	
A-13	CMB-FC002400		Gasket For A-12	뒷뚜껑 가스켓(T. B)	1	
A-14	DSC-BF000600	A, B	Screw(3/16" n=28)	CL이알판 쥘나사(3/16" n=28)	8	
A-14-1	DSC-BF008400	A-7, B-7	Screw	무릎올림 링크 쥘나사	3	
A-14-2	DSC-BF000600	A-7, B-7	Screw	CL이알판 쥘나사	5	
A-14-3	DSC-BA001800	A-7, B-7	Screw	톱카바나사(조)	1	
A-14-4	DWS-AA003800	A-7, B-7	Washer	상축 헬트 와셔	1	
A-15	DPK-CB000200		Arm Rubber Cap (L)	면판 고무마개(중) 흰색(3)	5	
A-16	DPK-CB000800		Arm Rubber Cap (S)	바늘대 상봉싱 마개 (흰색) 40	3	
A-17	DPK-CB001800		Rubber Cap For F-15	면판 급유 마개	1	
A-18	DPK-CA000600		Bed Rubber Cap	하축 후봇싱 고무마개	1	
A-19	DPK-CC000300	A-7, B-7	Code Bushing	코드 붓싱	1	
A-20	DSC-HC000300		Bed Base "Front"(A)	베드 받침(전)	1	
A-21	CMB-BB004500		Bed Base (R)	베드 받침	1	
A-22	PSC-AC002600		Screw(M8×1.25)	육각구멍볼이 보울트(M8×1.25)	1	
A-23	PWS-CA000400		Spring Washer For A-21	베드 받침 스프링 와셔	2	
A-24	PSN-AA000500		Nut(M8×1.25)	육각너트(M8×1.25)	1	
A-25	01-010M-2350		Brand Mark	상표 마크(암부)	1	
A-26	DTC-AH000200	A-7, B-7	Code Holder "A"	코드잡이"A"	1	
A-27	DTC-AH001100	A-7, B-7	Code Holder "B"	코드잡이"B"(OPTION)	1	
A-28	PTC-AH000200	A-7, B-7	Cable Holder(7N)	케이블 잡이A (7N)	1	
A-29	12-016M-2350	A-7, B-7	Earth Line	어스선(조)	1	
A-30	PTC-AG000100	A-7, B-7	Nylon Clip	나이론 클립	3	
A-31	CGA-GA003300	A, A-7	Needle Plate(A-TYPE)	바늘판(A形)	1	
A-32	CGA-GA003400	B, B-7	Needle Plate(B-TYPE)	바늘판(B形)	1	
A-33	DSC-BC000100		Screw(11/64" n=40)	침판 나사(11/64" n=40)	2	
A-34	AMB-GA001400		Slide Plate	미끄럼판(조)	1	
A-35	CMB-BJ005000		Gauge Plate	게이지 부착판	1	
A-36	DSC-BC000100		Screw(11/64" n=40)	침판 나사(11/64" n=40)	1	
A-37	CMB-LD004900	A	Model Mark (KM-350A)	모델 마크	1	
A-38	CMB-LD005000	B	Model Mark (KM-350B)	모델 마크	1	
A-39	CMB-LD005100	A-7	Model Mark (KM-350A-7S)	모델 마크	1	
A-40	CMB-LD005200	B-7	Model Mark (KM-350B-7S)	모델 마크	1	
A-41	CLB-FG000100		Gasket	가스켓	1	
A-42	CLB-BJ003000		Base For A-41	가스켓 베이스	1	
A-43	DSC-BB004000		Screw(3/16" n=28)	홈볼이 접시 작은나사(3/16" n=28)	4	
A-45	PPN-AD000100		Pin	번호판 핀	2	
A-47	CMB-HK002000		Upper Thread Guide Pin And Nut	실 안내봉	1	
A-49	ATA-PS001200	A-7, B-7	Sub Upper Thread Tension Control Ass'y	보조 사조자	1Set	
A-50	DSC-CA001600	A-7, B-7	Screw(11/64" n=40)	홈볼이 멈춤나사(11/64" n=40)	1	
A-53	CMB-HK000500		Arm Thread Guide	암 실걸이	1	
A-54	DSC-BA000100		Screw(9/64" n=40)	홈볼이 냄비 작은나사(9/64" n=40)	1	
A-55	CMB-HK001900		Thread Guide For A-5	면판 실걸이	1	
A-56	DSC-BA000100		Screw(9/64" n=40)	홈볼이 냄비 작은나사(9/64" n=40)	1	
A-57	ATA-PS003900	A, A-7	Thread Tension Control Ass'y	실조절 장치(조): A形	1Set	
A-58-1	ATA-PS004100	B, B-7	Thread Tension Control Ass'y	실조절 장치(조): B形	1Set	
A-58-2	DPS-BA001200	B, B-7	Thread Tension Adjusting Spring	소라 스프링(123B)	1	
A-59	CMB-HK008000		Arm Thread Guide(L)	Arm 실안내(L)	1	
A-61	DSC-CA000100		Screw(15/64" n=28)	홈볼이 멈춤나사(15/64" n=28)	1	
A-62	DSC-HC000600	A, B	Bed Base "Front"(B)	베드 받침(후)	1	
A-63	DPK-CZ000800		Cap For Tension Release Pin	실늦추기 핀 캡	1	
A-65	DSC-CB000700		Screw(M5)	새구멍 실걸이 고정나사	1	

NOTE:

A-7=KM-350A-7S
 B-7=KM-350B-7S
 A=KM-350A
 B=KM-350B
=Common Part

B

Upper Shaft & Thread Take Up Lever Mechanism 상축 및 실채기 관계



Ref. No.	Parts No.	Note	Name of Parts	품명	Q' ty	Applied Period
B-1	CUS-KC000500		Upper Shaft	상축(SERVO용:L=419.5mm)	1	
B-2	CUS-CH000101		Oil Adjusting Pin For B-1	상축 유량 조절핀	1	
B-3	PPK-BA000400		O-Ring For B-2	상축 유량 조절핀 오링	1	
B-5	CLB-JL001601		Upper Shaft Felter	상축 헬트	1	
B-7	CUS-DA000600	A, A-7	Link Cam(A-TYPE)	링크 캠(A形)	1	
B-8	CUS-DA003000	B, B-7	Link Cam(B-TYPE)	링크 캠(B形)	1	
B-9	DSC-BF003700		Screw(9/32" n=28)	홈볼이 납작 작은나사(9/32" n=28)	1	
B-12	DBS-D B008200		Upper Shaft Bushing(F)	상축 전붓싱	1	
B-14	DBS-D A003001		Upper Shaft Bushing(M)	상축 중붓싱	1	
B-15	DSC-CA000800		Screw(15/64" n=28)	홈볼이 멈춤나사(15/64" n=28)	1	
B-16	DCL-AA000102		Upper Shaft Collar	상축 카라	1	
B-17	DSC-CA000500		Screw(1/4" n=40)	홈볼이 멈춤나사(1/4" n=40)	2	
B-18	DGR-AD000100		Main Shaft Gear	상축기어	1	
B-19	DSC-CA000500		Screw(1/4" n=40)	홈볼이 멈춤나사(1/4" n=40)	2	
B-20	DBS-D B001101		Upper Shaft Bushing(R)	상축 후붓싱	1	
B-22	PPK-AA000100		Oil Seal For B-20,21	상축 오일 씬	1	
B-23	DPL-AA000200		Pulley	풀리	1	
B-25	DSC-BF000800		Screw(15/64" n=28)	홈볼이 납작 작은 나사(15/64" n=28)	2	
B-26	DSC-BG000200		Screw(5/16" n=24)	홈볼이 바인딩 작은나사(5/16" n=24)	1	
B-27	08-201A-250A		Thread Take Up Lever Ass'y	실채기(조)110-39070	1	
B-28	DSC-CA000500		Screw(1/4" n=40)	홈볼이 멈춤나사(1/4" n=40)	2	
B-31	DSC-CA000800		Screw(15/64" n=28)	홈볼이 멈춤나사(15/64" n=28)	1	
B-32	CLB-FZ001000		Oil Protection Rubber	오일 막이 고무	1	
B-33	CUS-BJ000200		Protection Plate For B-7, 8	링크 캠 접촉판	1	
B-34			Synchronizer Ass'y	싱크로 나이저(조)	1	
B-34-1	11-020A-2500		Magnetic Holder	마그네틱 홀더	1	
B-34-2	11-022W-2500		Washer For B-34-1	마그네틱 홀더 썸와셔	2	
B-34-3	11-021S-2500		Screw for B-34-1	마그네틱 홀더 썸나사	2	
B-34-4	13-0000-SE55		Synchronizer Ass'y (Servo)	싱크로 나이저(조)Servo	1Set	
B-36	CUS-FA000100		Rubber For B-2	상축 유량 조절 고무	1	
B-37	CMB-LD003800	A, B	Sticker	풀리 각인 스티커	1	

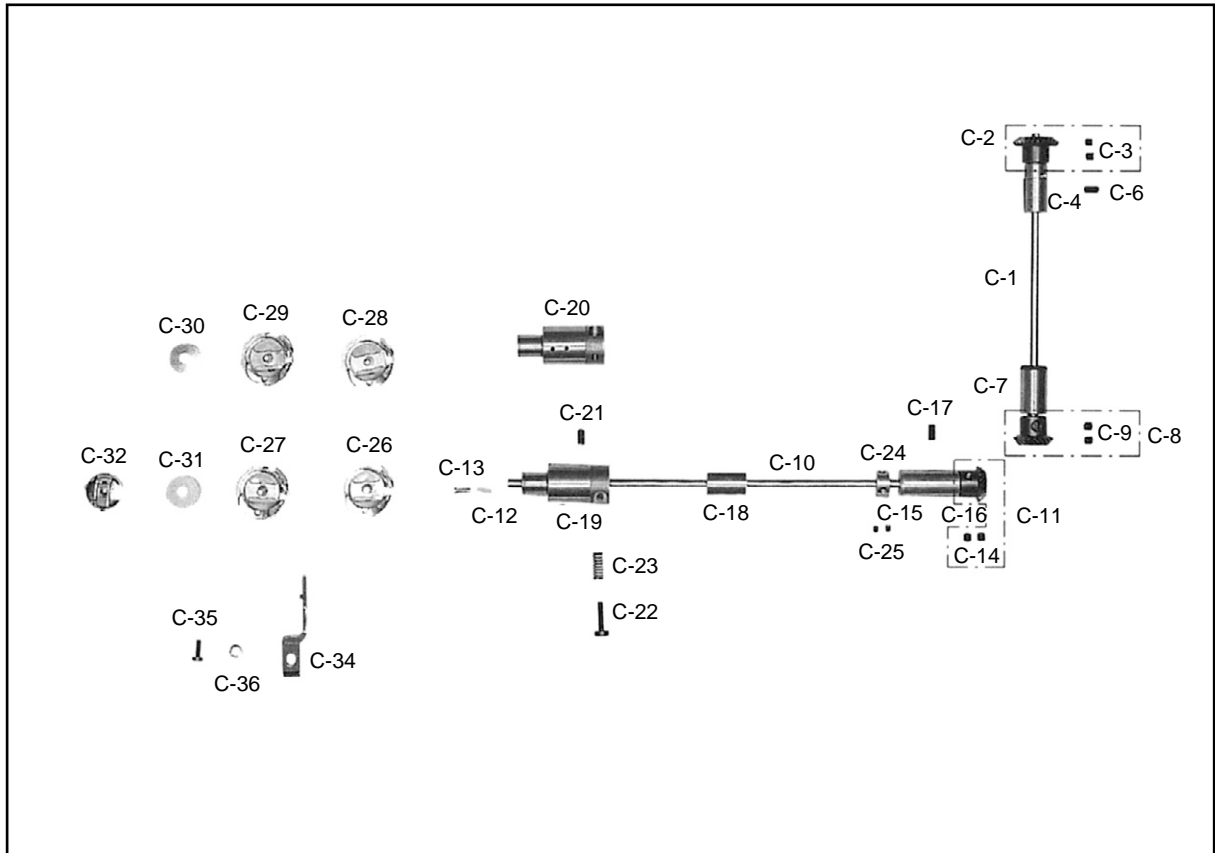
NOTE:

A-7=KM-350A-7S
B-7=KM-350B-7S
A=KM-350A
B=KM-350B
□=Common Part



Upright Shaft & Lower Shaft Mechanism

세운 축 및 하축관계



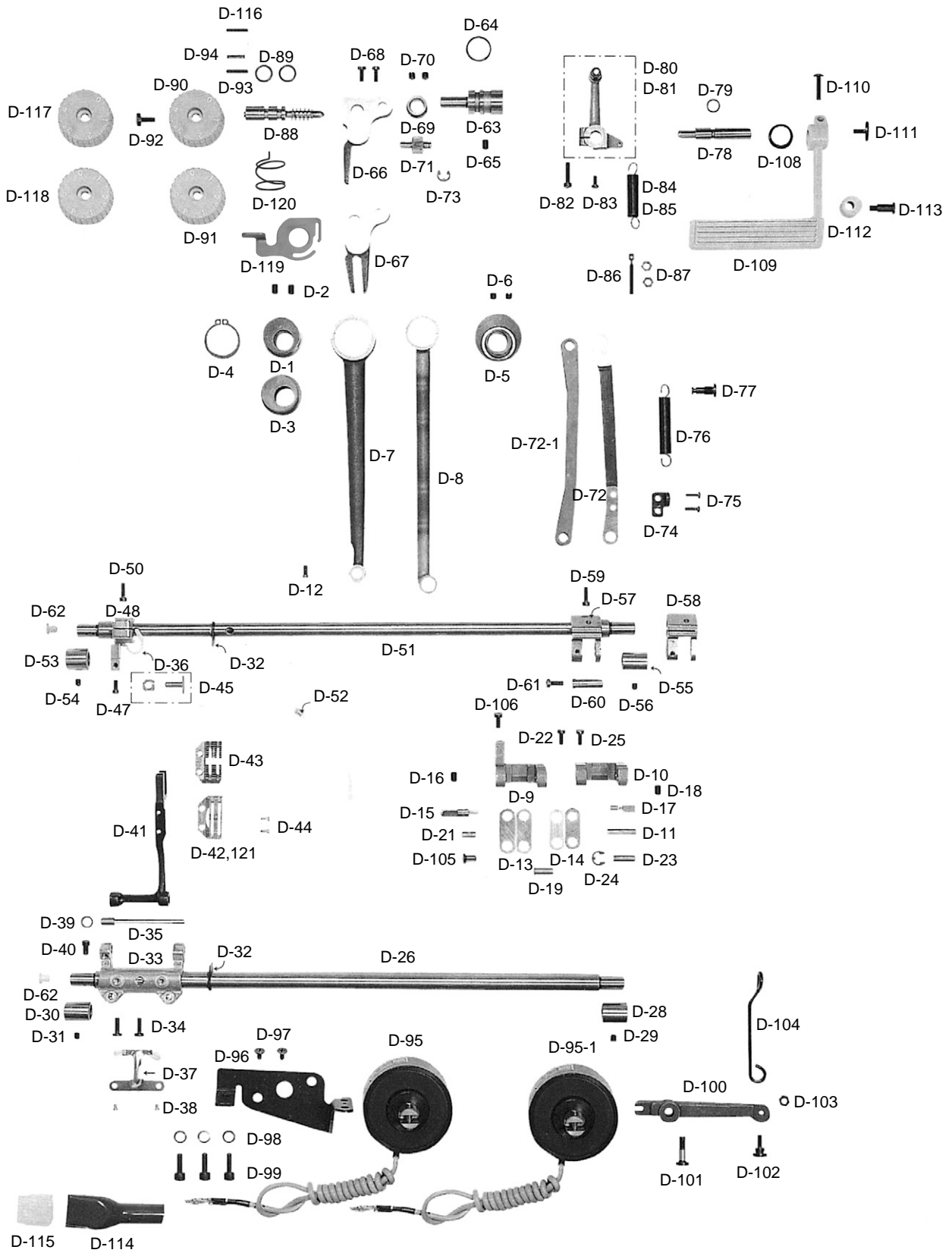
Ref. No.	Parts No.	Note	Name of Parts	품 명	Q' ty	Applied Period
C-1	CUR-KC000100		Upright Shaft	입축	1	
C-2	DGR-AD000200		Upright Shaft Upper Gear(U)	입축 상기어	1	
C-3	DSC-CA000500		Screw(1/4" n = 40)	홈볼이 멈춤나사(1/4" n = 40)	2	
C-4	DBS-DA003700		Upright Shaft Bushing	입축 상붓싱	1	
C-6	DSC-CA000800		Screw(15/64" n = 28)	홈볼이 멈춤나사(15/64" n = 28)	1	
C-7	DBS-DA003800		Upright Shaft Bushing(L)	입축 하붓싱	1	
C-8	DGR-AD000300		Upright Shaft Lower Gear	입축 하기어	1	
C-9	DSC-CA000500		Screw(1/4" n = 40)	홈볼이 멈춤나사(1/4" n = 40)	2	
C-10	CLS-KC000701		Lower Shaft	하축	1	
C-11	DGR-AD000400		Lower Shaft Gear	하축 기어	1	
C-12	CLB-JL002400		Lower Shaft Felter	하축 펠트	1	
C-13	DSC-BF007000		Cap Screw For Lower Shaft Oil	하축 펠트 꽃이나사	1	
C-14	DSC-CA000500		Screw(1/4" n = 40)	홈볼이 멈춤나사(1/4" n = 40)	2	
C-15	DBS-DA003900		Lower Shaft Bushing(R)	하축 후붓싱 (PBB才質)	1	
C-16	DBS-DA004100		Lower Shaft Bushing(R)	하축 후붓싱	1	
C-17	DSC-CA000800		Screw(15/64" n = 28)	홈볼이 멈춤나사(15/64" n = 28)	1	
C-18	DBS-DA004000		Lower Shaft Bushing(M)	하축 중붓싱 (7.94 × 20 × 25)	1	
C-19	DBS-DA003900		Lower Shaft Bushing(F)	하축 전붓싱 (PBB-Insert)	1	
C-20	DBS-DA026300		Lower Shaft Bushing(F)	하축 전붓싱	1	
C-21	DSC-CA000100		Screw(15/64" n = 28)	홈볼이 멈춤나사(15/64" n = 28)	1	
C-22	DSC-BF004000		Screw(3/16" n = 32)	홈볼이 납작 작은 나사(3/16" n = 32)	1	
C-23	DSP-AA001600		Spring For C-22	하축 오일 조절 나사 스프링	1	
C-24	DCL-AA001700		Collar For Lower Shaft	오일 펌프 카라(B) 7.94 × 17 × 8	1	
C-25	DSC-CB001000		Screw(11/64" n = 40)	홈볼이 멈춤나사(11/64" n = 40)	2	
C-26	CHK-HA002100		Rotary Hook Ass'y	가마(HSH-7.94BTR)	1Set	
C-27	CHK-HA002000		Rotary Hook Ass'y	가마(HSH-7.94BSN14)	1Set	
C-28	CHK-HA000900		Rotary Hook Ass'y	가마(HSH-7.94BOHNTR)	1Set	
C-29	CKH-HA002200		Rotary Hook Ass'y	가마(HSH-7.94BOHN)	1Set	
C-30	CHK-HB000600		Bobbin(AL)	보빈	1	
C-31	CHK-HB000600		Bobbin(Steel)	보빈	1	
C-32	CHK-HC001500		Bobbin Case Ass'y	보빈 케이스(침송형) BC-DLN-N	1Set	
C-34	CHK-HH000400		Inner Bobbin Stopper	가마잡이	1	
C-35	DSC-BF001000		Screw(11/64" n = 40)	홈볼이 납작 작은나사(11/64" n = 40)	1	
C-36	DWS-CA000100		Washer For C-35	가마잡이 와셔	1	

NOTE:

A-7=KM-350A-7S
 B-7=KM-350B-7S
 A=KM-350A
 B=KM-350B
 □=Common Part

D

Feed Mechanism 피이드 관계



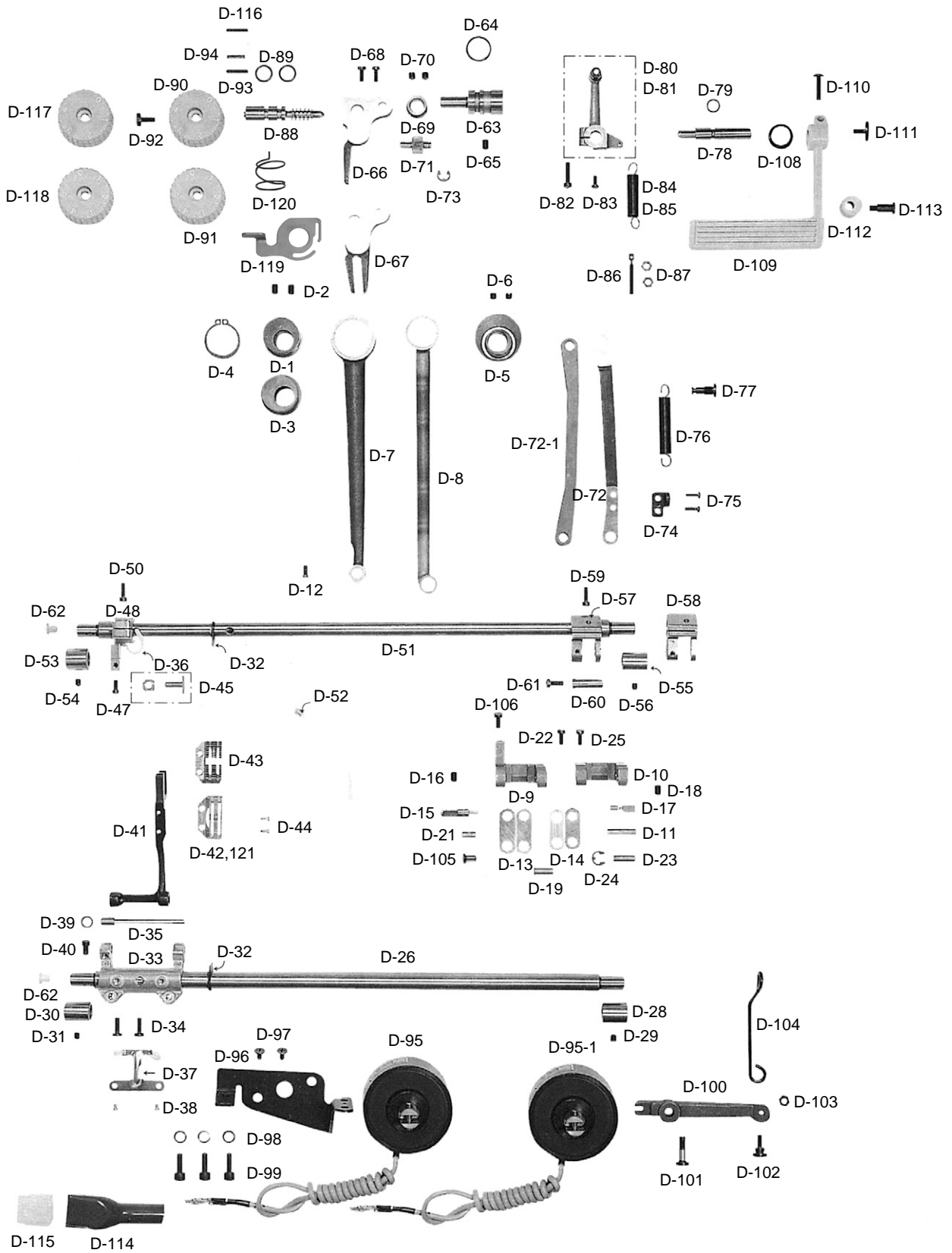
Ref. No.	Parts No.	Note	Name of Parts	품 명	Q' ty	Applied Period
D-1	CLF-D C002300	A, A-7	Feed Cam A	피이드 캠A	1	
D-2	DSC-CA001900		Screw(1/4" n=40)	홈볼이 멈춤나사(1/4" n=40)	2	
D-3	CLF-D C002600	B, B-7	Feed Cam B	피이드 캠B	1	
D-4	PSR-AA000400		Stop Ring "C" For C-1, 3	스냅링 28#D	1	
D-5	CLF-D C002400		Feed Cam C	피이드 캠 C	1	
D-6	DSC-CA001100		Screw(1/4" n=40)	홈볼이 멈춤나사(1/4" n=40)	2	
D-7	CLF-CC000100		Feed Rocker Shaft Connecting Rod	수평 이송 로드	1	
D-8	CLF-CC000200		Crank Rod	크랭크 로드	1	
D-9	CFA-CA000300	A-7, B-7	Feed Regulator Link	피이드 조절 링크	1	
D-10	CFA-CA001300	A, B	Feed Regulator Link	피이드 조절 링크	1	
D-11	DPN-AA000100		Feed Connection Link Pin(A)	피이드 연결 링크 핀(A)	1	
D-12	DSC-BF006300		Screw(11/64" n=40)	홈볼이 납작 작은 나사(11/64" n=40)	1	
D-13	CLF-CA000200		Feed Connection Link(A)	피이드 연결링크(A)	2	
D-14	CLF-CA000300		Feed Connection Link(B)	피이드 연결링크(B)	2	
D-15	DPN-BC001000		Feed Adjusting Link Hinge Pin(A)	피이드 조절링크 힌지핀(A)	1	
D-16	DSC-CA001100		Screw(1/4" n=40)	홈볼이 멈춤나사(1/4" n=40)	1	
D-17	DPN-BC001100		Feed Adjusting Link Hinge Pin(B)	피이드 조절링크 힌지핀(B)	1	
D-18	DSC-CA001100		Screw(1/4" n=40)	홈볼이 멈춤나사(1/4" n=40)	1	
D-19	DPN-AA003900		Feed Connection Link Pin(B)	피이드 연결링크 핀(B)	1	
D-21	DPN-AA004000		Feed Connection Link Pin(C)	피이드 연결링크 핀(C)	1	
D-22	DSC-BF003600		Screw(11/64" n=40)	홈볼이 납작 작은 나사(11/64" n=40)	1	
D-23	DPN-AA004100		Hinge Pin For D-72	피이드 조절 연결 로드 힌지핀	1	
D-24	PSR-AC000200		E-Ring(φ5)	E링(φ5)	1	
D-25	DSC-BF003600		Screw(11/64" n=40)	홈볼이 납작 작은나사(11/64" n=40)	1	
D-26	CLF-KF000200		Feed Rock Shaft	수평밀대	1	
D-28	DBS-DA006800		Feed Rock Shaft Bushing(R)	들대 붓싱(후) 11.11×16.8×20	1	
D-29	DSC-CA000100		Screw(15/64" n=28)	홈볼이 멈춤나사(15/64" n=28)	1	
D-30	DBS-DA006700		Feed Rock Shaft Bushing(F)	수평밀대 전붓싱 11.11×17.74×16	1	
D-31	DSC-CA000100	A, B	Screw(15/64" n=28)	홈볼이 멈춤나사(15/64" n=28)	1	
D-32	CLB-FZ000100		Oil Cover For D-26, 51	들밀대 고무마개	2	
D-33	CLF-CB000700		Feed Bar Crank	뜸니 받침 크랭크	1	
D-34	DSC-BF002600		Screw(3/16" n=32)	홈볼이 납작 작은나사(3/16" n=32)	2	
D-35	CLF-KH000100		Feed Bar Shaft	뜸니 받침 축	1	
D-37	CLB-BG002300		Wick Holder For D-35	심지 지지대	1	
D-38	DSC-BF007700		Screw(1/8" n=44)	홈볼이 납작 작은나사(1/8" n=44)	2	
D-39	DWS-AA001500		Washer For D-35	뜸니 받침 축 와셔	1	
D-40	DSC-BF000400		Screw(15/64" n=28)	홈볼이 납작 작은나사(15/64" n=28)	1	
D-41	CLF-CR000300		Feed Bar	뜸니 받침	1	
D-42	CGA-GB002200	A, A-7	Feed Dog(A-TYPE)	뜸니(A形)	1	
D-43	CGA-GB002600	B, B-7	Feed Dog(B-TYPE)	뜸니(B形)	1	
D-44	DSC-BF001800		Screw(1/8" n=44)	홈볼이 납작 작은나사(1/8" n=44)	2	
D-45	CLF-CD000400		Sliding Block	뜸니 받침 블럭	1	
D-47	DSC-BF007900		Screw(3/16" n=32)	홈볼이 납작 작은나사(3/16" n=32)	1	
D-48	CLF-CB000500		Feed Lifting Bell Arm	들대 크랭크(前)	1	
D-50	DSC-AA001000		Screw(3/16" n=28)	홈볼이 납작 작은나사(3/16" n=28)	1	
D-51	CLF-KF000100		Feed Lifting Shaft	들대	1	
D-52	CLB-BG005300		Stopper For Wick	오일 심지 스톱퍼	2	
D-53	DBS-DA007100		Feed Lifting Shaft Bushing(F)	들대 붓싱(전) 11.11×17.46×20	1	
D-54	DSC-CA000100		Screw(15/64" n=28)	홈볼이 멈춤나사(15/64" n=28)	1	
D-55	DBS-DA006800		Feed Lifting Shaft Bushing(R)	들대 붓싱(후) 11.11×16.8×20	1	
D-56	DSC-CA000100		Screw(15/64" n=28)	홈볼이 멈춤나사(15/64" n=28)	1	
D-57	CLF-CB000600	A, A-7	Feed Lifting Shaft Crank(R): A-Type	들대 크랭크(후)	1	
D-58	CLF-CB003300	B, B-7	Feed Lifting Shaft Crank(R): B-Type	들대 크랭크(후)	1	
D-59	DSC-AA001000		Screw(3/16" n=28)	홈볼이 납작 작은나사(3/16" n=28)	1	
D-60	DPN-AA003600		Crank Rod Connection Pin	들밀대 크랭크 핀	1	
D-61	DSC-BF003600		Screw(11/64" n=40)	홈볼이 납작 작은나사(11/64" n=40)	1	
D-62	DPK-CB002500		Rubber Cap For D-26, 51(F)	들밀대 유심마개	2	
D-63	CFA-KF000201		Feed Regulator Shaft	피이드 조절기 축	1	
D-64	PPK-BA000800		O-Ring For D-63	피이드 조절기 붓싱 오링	2	

NOTE:

A-7=KM-350A-7S
 B-7=KM-350B-7S
 A=KM-350A
 B=KM-350B
=Common Part

D

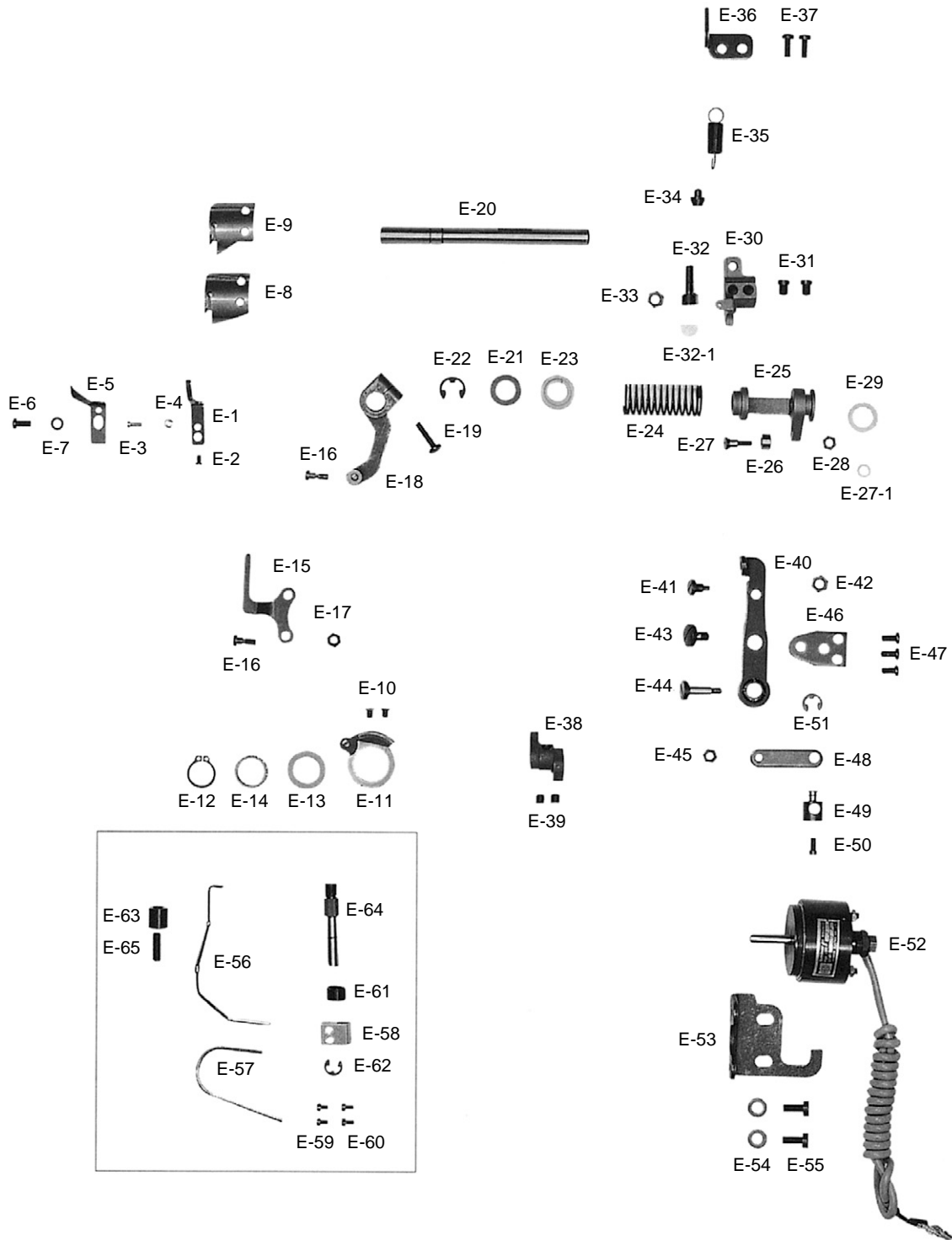
Feed Mechanism 피이드 관계



Ref. No.	Parts No.	Note	Name of Parts	품 명	Q' ty	Applied Period
D-65	DSC-CA000800		Screw(15/64" n=28)	홈볼이 멈춤나사 (15/64" n=28)	1	
D-66	CFA-DF000101	A-7, B-7	Feed Regulator	피이드 조절기	1	
D-67	CFA-DF000800	A, B	Feed Regulator	피이드 조절기	1	
D-68	DSC-BF003100		Screw(11/64" n=40)	홈볼이 납작 작은나사(11/64" n=40)	1	
D-69	DCL-AA002800		Collar For D-63	피이드 조절기 축 카라	1	
D-70	DSC-CA001900		Screw(1/4" n=40)	홈볼이 멈춤나사(1/4" n=40)	2	
D-71	CFA-KF000300		Feed Adjusting Shaft	피이드 조절축	1	
D-72	CFA-CC000200	A-7, B-7	Feed Regulating Rod	피이드 조절 로드	1	
D-72-1	CFA-CC000900	A, B	Connecting Rod For Feed Regulator	피이드 조절기 로드	1	
D-73	PSR-AC000200		E-Ring(φ5)	E링(φ5)	1	
D-74	CFA-BJ000300	A-7, B-7	B/T Spring Holder	자동 역진 스프링 홀더	1	
D-75	DSC-BJ000300	A-7, B-7	Screw(9/64" n=40)	홈볼이 둥근납작 작은나사(9/64" n=40)	2	
D-76	DSP-AB001400	A-7, B-7	Reverse Feed Spring	역진 레버 스프링	1	
D-77	DSC-FH000500	A-7, B-7	Holder For D-76	자동 역진 스프링 걸이	1	
D-78	CFA-KF000100		Reverse Feed Control Lever Shaft	역진 레버 축	1	
D-79	PPK-BA000700		O-Ring For D-78	레버축 오링	1	
D-80	CFA-CB000300	A-7, B-7	Reverse Feed Lever Crank Ass'y	역진 레버 인장 크랭크(조)	1	
D-81	AFA-PS000600	A, B	Reverse Feed Lever Crank Ass'y	역진 레버 인장 크랭크(조)	1	
D-82	DSC-BA000400		Screw(3/16" n=28)	홈볼이 납비 작은나사(3/16" n=28)	1	
D-83	DSC-BF000500		Screw(11/64" n=40)	홈볼이 납작 작은나사(11/64" n=40)	1	
D-84	DSP-AB003500	A, A-7	Spring For D-109	역진 레버 스프링	1	
D-85	DSP-AB005100	B, B-7	Spring For D-109	역진 레버 스프링	1	
D-86	DSC-HD000600	A-7, B-7	Holder For D-84, 85	스프링걸이 축 나사	1	
D-87	DSN-AA000900	A-7, B-7	Nut (11/64" n=40)	육각너트(11/64" n=40)	2	
D-88	CFA-KJ000100		Feed Regulator Dial Shaft	피이드 조절 다이알 축	1	
D-89	PPK-BA001600		O-Ring For D-88	다이알 축 오링	2	
D-90	CFA-CQ002200	A	Feed Regulator Control Plate(4mm)	다이알 문자판(4mm)	1	
D-91	CFA-CQ001000	B	Feed Regulator Control Plate(5mm)	다이알 문자판(5mm)	1	
D-92	DSC-BF001900		Screw(3/16" n=28)	홈볼이 납작 작은나사(3/16" n=28)	1	
D-93	DPN-AA014600	A, B	Pin For D-90, 91	다이알 핀	1	
D-94	DSP-AA002800		Spring For D-93	다이알 스프링	1	
D-95	DSD-AA003000	B-7	Reverse Feed Solenoid Ass'y	역진 솔레노이드(SBT-5)	1조	
D-95-1	DSD-AA001200	A-7	Reverse Feed Solenoid Ass'y	역진 솔레노이드(SBT-7)	1조	
D-96	CFA-BB000200	A-7, B-7	Bracket For Reverse Feed Solenoid	역진 솔레노이드 브라켓	1	
D-97	DSC-BB001500	A-7, B-7	Screw(M5×0.8)	홈볼이 접시 작은나사(M5×0.8)	2	
D-98	PWS-CA000500	A-7, B-7	Washer For Synchronizer	싱크로 베이스 스프링 와셔(φ6)	3	
D-99	PSC-AC001200	A-7, B-7	Screw(M6)	육각 구멍볼이 보울트(M6)	3	
D-100	CFA-CB000400	A-7, B-7	Reverse Feed Solenoid Crank	역진 솔레노이드 크랭크	1	
D-101	DSC-FA006300	A-7, B-7	Stud Screw For D-100	역진 솔레노이드 크랭크 단나사	1	
D-102	DSC-FA008600	A-7, B-7	Hinge Screw For D-104	역진 솔레노이드 연결 로드 힌지 나사	1	
D-103	PSN-AA001700	A-7, B-7	Hinge Nut For D-104	케이블 연결 너트(B)	1	
D-104	CFA-CC000301	A-7, B-7	Reverse Solenoid Connecting Rod	역진 솔레노이드 연결 로드	1	
D-105	DPN-AD004000	A-7, B-7	Hinge Pin For D-104	역진 솔레노이드 연결 로드 힌지 핀	1	
D-106	DSC-BF003600	A-7, B-7	Screw(11/64" n=40)	홈볼이 납작 작은나사(11/64" n=40)	1	
D-108	DWS-CB000200		Washer For D-78	레버 와셔	1	
D-109	CFA-CM000200		Feed Regulator Lever	역진 레버	1	
D-110	DSC-BA001400		Screw(3/16" n=32)	홈볼이 납비 작은나사(3/16" n=32)	1	
D-111	DSC-BJ002400		Screw(3/16" n=32)	홈볼이 바인딩 작은나사(3/16" n=32)	1	
D-112	CFA-FZ000100		Stopper Rubber For D-109	역진 레버 스토퍼(상) 고무	1	
D-113	DSC-FA006200		Stopper Stud Screw For D-109	역진 레버 스토퍼(상) 단나사	1	
D-114	11-019M-2350	A-7, B-7	Terminal Tube(L)	솔레노이드 튜브	1	
D-115	11-018M-2350	A-7, B-7	Solenoid Terminal(12P)	솔레노이드 프리그	1	
D-116	DPN-AA014700	A-7, B-7	Dial Pin(ININSERT)	다이알 핀(인서트)	1	
D-117	CFA-CQ000100	A-7	Feed Regulator Control Plate(4mm)(INSERT)	다이알 문자판(인서트)	1	
D-118	CFA-CQ001000	B-7	Feed Regulator Control Plate(5mm)(INSERT)	다이알 문자판(인서트)	1	
D-119	AFA-PS000100		Dial Shaft Eccentric Stopper	다이알 축 편심 스토퍼	1	
D-120	DSP-AA005200		Dial Shaft Eccentric Stopper Spring	다이알 축 편심 스토퍼 스프링	1	
D-121	CGA-GB002700	A, A-7	Feed Dog (A-Type 1.5mm)	톱니 (박물용 1.5mm 사양)	1	

NOTE:

A-7=KM-350A-7S
 B-7=KM-350B-7S
 A=KM-350A
 B=KM-350B
=Common Part

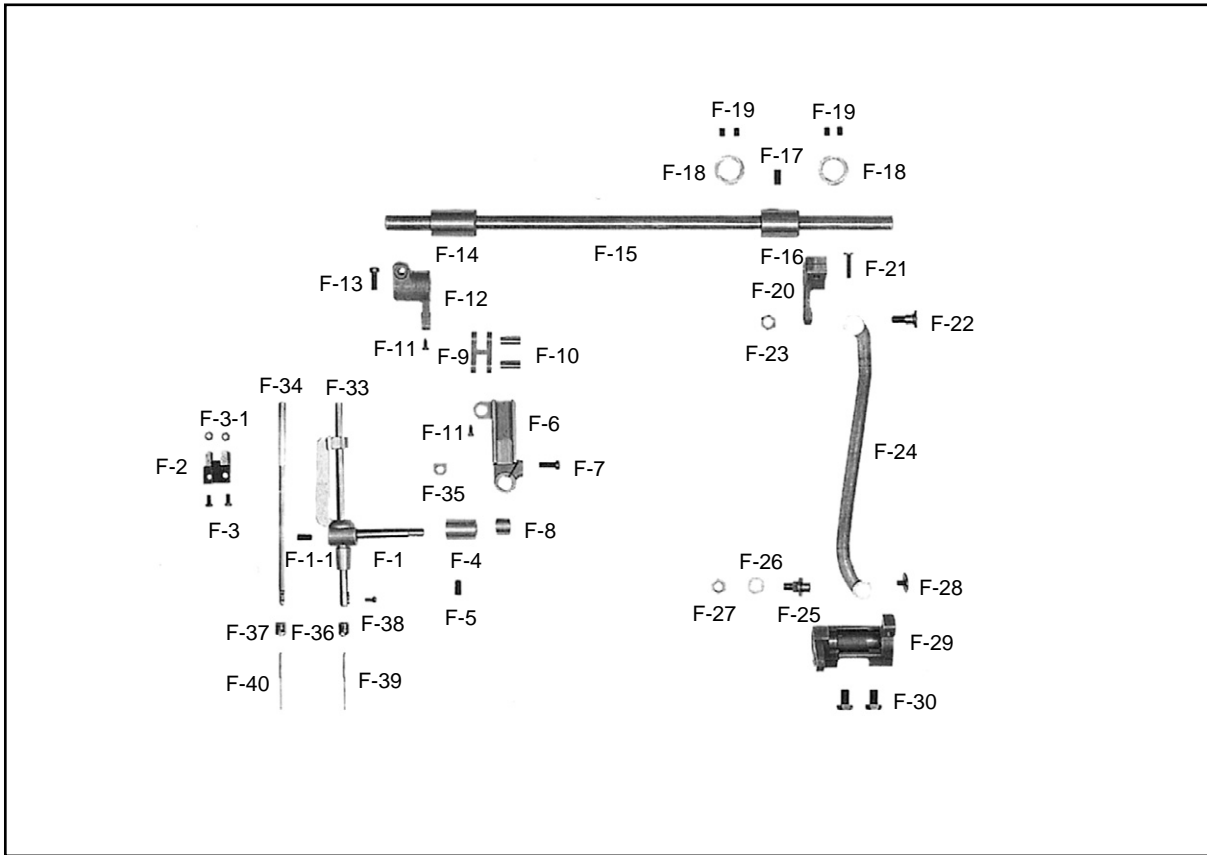


Ref. No.	Parts No.	Note	Name of Parts	품 명	Q' ty	Applied Period
E-1	CTT-NB000500	A-7, B-7	Fixed Mes	고정 메스(7AN701)	1	
E-2	DSC-BB002000	A-7, B-7	Screw(9/64" n=40)	홈볼이 접시 작은나사(9/64" n=40)	1	
E-3	DSC-BF006200	A-7, B-7	Screw(1/8" n=40)	홈볼이 납작 작은나사(1/8" n=40)	1	
E-4	DSN-AA001700	A-7, B-7	Nut(1/8" n=40)	육각너트(1/8" n=40)	1	
E-5	CTT-BJ001100	A-7, B-7	Thread Retaining Plate	실 가리개	1	
E-6	DSC-BJ000200	A-7, B-7	Screw(11/64" n=40)	홈볼이 둥근납작 작은나사(11/64" n=40)	1	
E-7	DWS-AA001100	A-7, B-7	Washer For E-5	넛뚜껑 칩와셔	1	
E-8	CTT-NA000600	A-7	Rotary Mes	회전메스(7AN414)	1	
E-9	CTT-NA001000	B-7	Rotary Mes	회전메스(7AN414)	1	
E-10	DSC-BB001400	A-7, B-7	Screw(11/64" n=40)	접시머리 보울트(11/64" n=40)	2	
E-11	CTT-BF000100	A-7, B-7	Thread Trimming Holder	사절 홀더	1	
E-12	PSR-AA000200	A-7, B-7	Stop-Ring For E-11	스냅링(15D)	1	
E-13	DWS-AA005100	A-7, B-7	Washer For E-11	사절 홀더 와셔	1	
E-14	PBR-BA001200	A-7, B-7	Needle Bearing	니이들 베어링	1	
E-15	CTT-CA000400	A-7, B-7	Thread Trimming Lever Connecting Link	사절 레버 연결링크	1	
E-16	DSC-FA005600	A-7, B-7	Stud Screw For E-15	사절 레버 연결링크 단나사	2	
E-17	DSN-AA000900	A-7, B-7	Nut(11/64" n=40)	육각너트(11/64" n=40)	1	
E-18	CTT-CB000600	A-7, B-7	Thread Trimming Lever	사절 레버	1	
E-19	PSC-AC000600	A-7, B-7	Screw(M6)	육각구멍볼이 보울트(M6)	1	
E-20	CTT-KF000200	A-7, B-7	Thread Trimming Shaft	사절축	1	
E-21	DWS-AA005200	A-7, B-7	Washer For E-20	사절축 와셔	1	
E-22	PSR-AC000100	A-7, B-7	E-Ring(φ9)	제어체 축링(E링 9)	1	
E-23	DCL-BA000600	A-7, B-7	Return Spring Guide Bushing	리턴 스프링 가이드 붓싱	1	
E-24	DSP-AA002500	A-7, B-7	Slide Arm Return Spring	슬라이드 아암 리턴 스프링	1	
E-25	CTT-CM000501	A-7, B-7	Slide Arm	슬라이드 아암	1	
E-26	CTT-CL000300	A-7, B-7	Roller	로올러	1	
E-27	DSC-GA000400	A-7, B-7	Stud Screw For E-26	로올러 단나사	1	
E-27-1	DWS-CA000100	A-7, B-7	Washer	와셔	1	
E-28	DSN-AA000600	A-7, B-7	Nut(3/16" n=32)	육각너트(3/16" n=32)	1	
E-29	CTT-FB000200	A-7, B-7	Cushion Washer For E-20	쿠션 고무(B)	2	
E-30	CTT-CB000700	A-7, B-7	Cam Follower Crank	사절캠 중동 크랭크	1	
E-31	DSC-BJ002000	A-7, B-7	Screw For E-30	노루발 상하운동 캠 고정나사	2	
E-32	DSC-BF007200	A-7, B-7	Stopper Screw	스토퍼 쿠션 나사	1	
E-32-1	CTT-FD000200	A-7, B-7	Cushion Rubber For E-32	스토퍼 쿠션 고무	1	
E-33	DSN-AA000400	A-7, B-7	Nut(15/64" n=28)	육각너트(15/64" n=28)	1	
E-34	DPN-BB001200	A-7, B-7	Stopper Pin	스토퍼 핀	1	
E-35	DSP-AB001000	A-7, B-7	Spring For E-30	사절 캠 중동 크랭크 스프링	1	
E-36	CTT-BB000800	A-7, B-7	Spring Holder	스프링 걸이	1	
E-37	DSC-BF000600	A-7, B-7	Screw(3/16" n=28)	홈볼이 납작 작은나사(3/16" n=28)	2	
E-38	CTT-DF000100	A-7, B-7	Thread Trimming Cam	사절 캠	1	
E-39	DSC-CB000400	A-7, B-7	Screw(1/4" n=40)	육각구멍볼이 멈춤나사(1/4" n=40)	2	
E-40	CTT-CM000600	A-7, B-7	Clutch Lever Ass'y	클러치 레버(조)	1Set	
E-41	DSC-FH000200	A-7, B-7	Stud Screw For E-40	클러치 레버 작동 핀 나사	1	
E-42	DSN-AA000400	A-7, B-7	Nut(15/64" n=28)	육각너트(15/64" n=28)	1	
E-43	DSC-FD000300	A-7, B-7	Clutch Lever Moving Pin Screw	무릎 올림봉 단나사	1	
E-44	DSC-FA005700	A-7, B-7	Stud Screw For E-48	솔레노이드 연결링크 단나사	1	
E-45	DSN-AA000600	A-7, B-7	Nut(3/16" n=32)	육각너트(3/16" n=32)	1	
E-46	CTT-BJ001200	A-7, B-7	Base Plate	베이스 플레이트	1	
E-47	DSC-BF000600	A-7, B-7	Screw(3/16" n=28)	홈볼이 납작 작은나사(3/16" n=28)	3	
E-48	CTT-CA000500	A-7, B-7	Solenoid Connection Link	솔레노이드 연결링크	1	
E-49	DPN-AD003300	A-7, B-7	Solenoid Pin	솔레노이드 핀	1	
E-50	DSC-BF006300	A-7, B-7	Screw(11/64" n=40)	홈볼이 납작 작은나사(11/64" n=40)	1	
E-51	PSR-AC000200	A-7, B-7	E-Ring(φ5)	E링(φ5)	1	
E-52	DSD-AA001000	A-7, B-7	Thread Trimming Solenoid Ass'y	사절 솔레노이드(STT-5)	1set	
E-53	CTT-BB000700	A-7, B-7	Base For E-52	사절 솔레노이드 베이스	1	
E-54	PWS-CA000500	A-7, B-7	Washer For E-53	싱크로 베이스 스프링 와셔(φ6)	2	
E-55	DSC-BF000700	A-7, B-7	Screw(15/64" n=28)	홈볼이 납작 작은나사(15/64" n=28)	2	
E-56	CTT-BH000101	A-7, B-7	Bobbin Catcher	보빈 압력봉	1	
E-57	CTT-BH000201	A-7, B-7	Bobbin Catcher Lever	보빈 압력봉 레버	1	
E-58	CTT-BF000200	A-7, B-7	Bobbin Catcher Holder	레버 잡이	1	
E-59	DSC-BF000100	A-7, B-7	Screw(1/8" n=44)	홈볼이 납작 작은나사(1/8" n=44)	2	
E-60	DSC-BF000100	A-7, B-7	Screw(1/8" n=44)	홈볼이 납작 작은나사(1/8" n=44)	2	
E-61	DSP-AC001700	A-7, B-7	Bobbin Catcher Spring	보빈 압력 스프링	1	
E-62	PSR-AC000500	A-7, B-7	E-Ring(φ6)	E링(φ6)	1	
E-63	CTT-FD000100	A-7, B-7	Stopper Rubber For E-56	보빈 압력봉 스토퍼	1	
E-64	DSC-HC000400	A-7, B-7	Bed Base "FRONT"(B)	베드 받침(전)	1	
E-65	DSC-CA001500	A-7, B-7	Screw(15/64" n=28)	홈볼이 멈춤나사(15/64" n=28)	1	

NOTE:

A-7=KM-350A-7S
 B-7=KM-350B-7S
 A=KM-350A
 B=KM-350B
=Common Part

Needle Bar Driving Mechanism 바늘대 요동 관계



Ref. No.	Parts No.	Note	Name of Parts	품명	Q' ty	Applied Period
F-1	ANB-PS000601		Needle Bar Frame	바늘대 후레임(110-03559)	1	
F-1-1	DSC-CA002400		Screw	바늘대 붓싱나사(45/5)	1	
F-2	CNB-BK001801		Needle Bar Frame Guide	바늘대 후레임 가이드	1	
F-3	DSC-BA000200		Screw(9/64" n=40)	홈볼이 납작 작은나사(9/64" n=40)	2	
F-3-1	DSN-AA002000		Stud Nut	와이퍼 링크'A' 연결 단나사 너트	2	
F-4	DBS-DA025700		Needle Bar Frame Shaft Bushing	바늘대 후레임 축 붓싱	1	
F-5	DSC-CA000300		Screw(3/16" n=28)	홈볼이 멈춤나사(3/16" n=28)	1	
F-6	CNB-BK001900		Slide Block Guide	슬라이드 블럭 가이드	1	
F-7	DSC-BA000400		Screw(3/16" n=28)	홈볼이 납작 작은나사(3/16" n=28)	1	
F-8	PBR-BA004000		Needle Bearing	니이들 베어링(B2913-412-N00)	1	
F-9	CUF-CA001900		Driving Link	요동 링크	1	
F-10	DPN-AA014000		Needle Bar Link Pin	바늘대 링크핀	2	
F-11	DSC-BF006500		Screw(9/64" n=40)	홈볼이 납작 작은나사(9/64" n=40)	2	
F-12	CUF-CB002100		Driving Crank(F)	요동 크랭크(前)	1	
F-13	DSC-BF001100		Screw(3/16" n=28)	홈볼이 납작 작은나사(3/16" n=28)	1	
F-14	DBS-DA025300		Rock Shaft Bushing(F)	요동축 붓싱(前)	1	
F-15	CUF-KC000700		Needle Feed Connection Shaft	침송 연결축	1	
F-16	DBS-DA025400		Rock Shaft Bushing(R)	요동축 붓싱(後)	1	
F-17	DSC-CA000300		Screw(3/16" n=28)	홈볼이 멈춤나사(3/16" n=28)	1	
F-18	DCL-AA008100		Collar For F-15	침송 연결축 카라	2	
F-19	DSC-CA000100		Screw(15/64" n=28)	홈볼이 멈춤나사(15/64" n=28)	4	
F-20	CUF-CB002200		Driving Crank(R)	요동 크랭크(後)	1	
F-21	DSC-BF001100		Screw(3/16" n=28)	홈볼이 납작 작은나사(3/16" n=28)	1	
F-22	DSC-FA019200		Stud Screw For F-20	요동 크랭크(후) 단나사	1	
F-23	DSN-AA000400		Nut(15/64" n=28)	육각너트(15/64" n=28)	1	
F-24	CUF-CC001900		Needle Feed Connection Rod	침송 연결로드	1	
F-25	DSC-GC000700		Needle Feed Connection Rod Shaft	침송 연결로드 축	1	
F-26	DWS-AA014400		Washer For F-24	포크 쥘나사 와셔	1	
F-27	DSN-AA000400		Nut(15/64" n=28)	육각너트(15/64" n=28)	1	
F-28	DSC-CA002300		Screw(11/64" n=40)	홈볼이 바인딩 작은나사(11/64" n=40)	1	
F-29	CLF-CB003200		Level Feed Crank(R)	수평밀대 크랭크(後)	1	
F-30	DSC-AA003400		Screw(9/32" n=28)	육각 보울트(9/32" n=28)	2	
F-33	CNB-KA003000	A, A-7	Needle Bar(A-TYPE)	바늘대(A形)	1	
F-34	CNB-KA003200	B, B-7	Needle Bar(B-TYPE)	바늘대(B形)	1	
F-35	CNB-CD000201		Needle Bar Guide Slider Block	바늘대 안내 블럭	1	
F-36	CNB-HK000400	A, A-7	Needle Bar Thread Guide(A-TYPE)	바늘대 실안대(A形)	1	
F-37	CNB-HK002100	B, B-7	Needle Bar Thread Guide(B-TYPE)	바늘대 실결이	1	
F-38	DSC-BF000100		Screw(1/8" n=44)	홈볼이 납작 작은나사(1/8" n=44)	1	
F-39		A, A-7	Needle	바늘	1	
F-40		B, B-7	Needle	바늘	1	

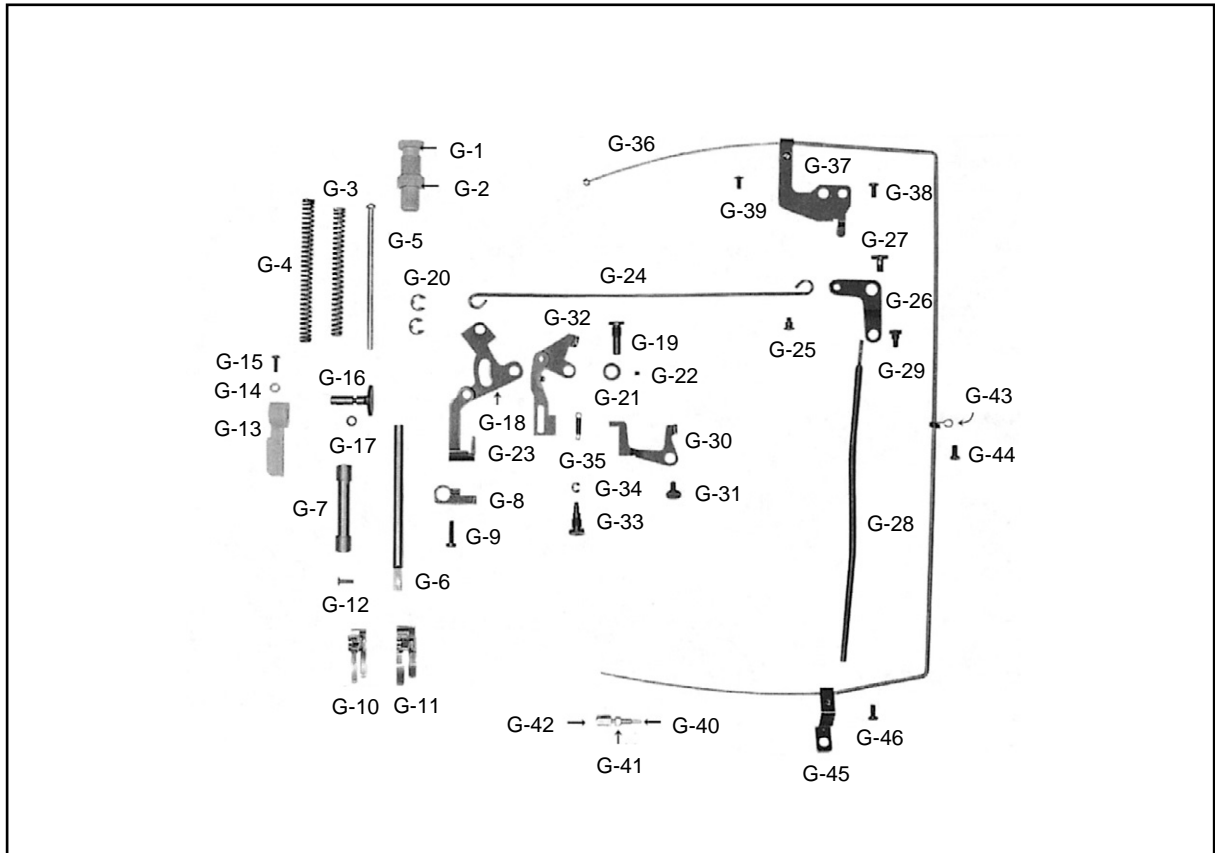
NOTE:

A-7=KM-350A-7S
B-7=KM-350B-7S
A=KM-350A
B=KM-350B
□=Common Part



Presser Foot & Tension Release Mechanism

노루발 및 실 늦추기 관계

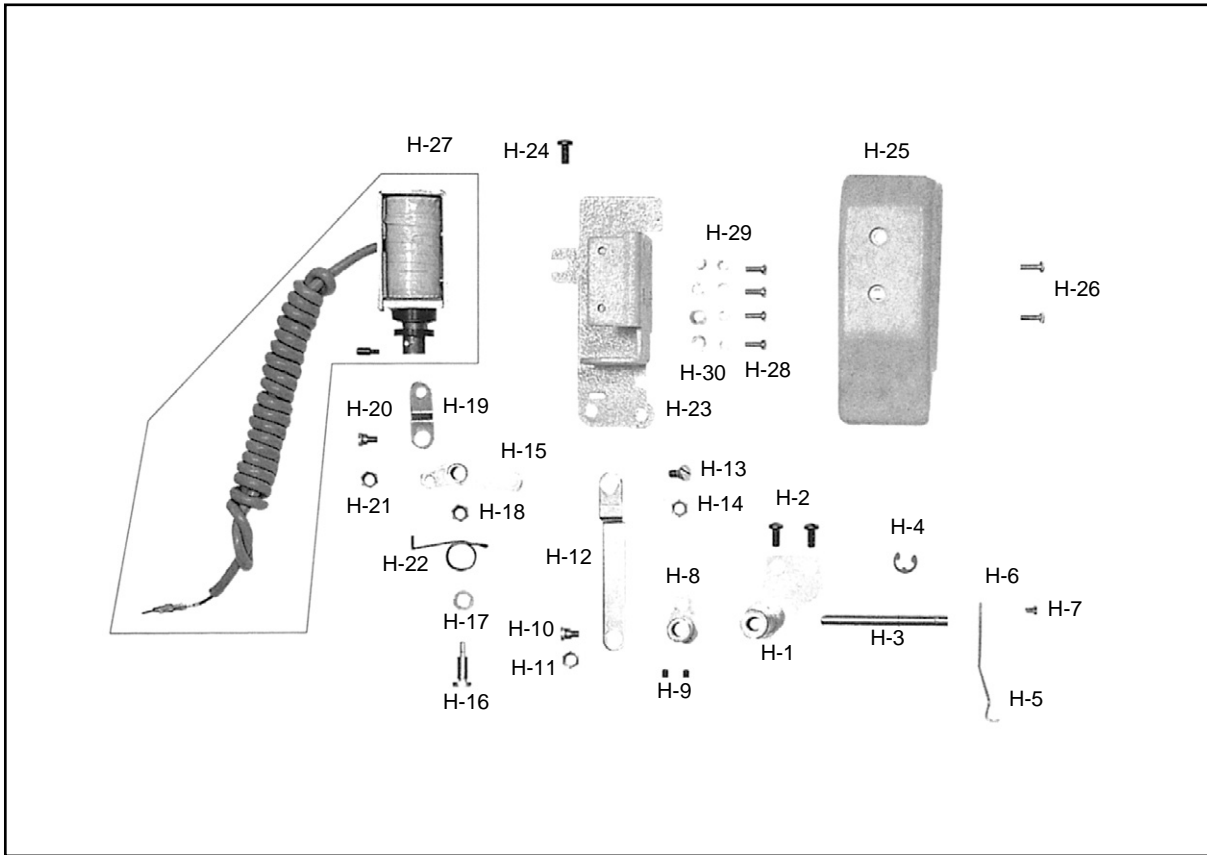


Ref. No.	Parts No.	Note	Name of Parts	품명	Q'ty	Applied Period
G-1	DSC-HA000100		Screw(9/16" n=20)	흡볼이 등근납작 작은나사(9/16" n=20)	1	
G-2	DSN-CC000100		Presser Adjusting Nut	압력 조절 나사 너트	1	
G-3	DSP-AA001700	A. A-7	Presser Adjusting Spring(A-TYPE)	압력 조절 스프링(A형)	1	
G-4	DSP-AA006200	B. B-7	Presser Adjusting Spring(B-TYPE)	압력 조절 스프링(B형)	1	
G-5	CPB-KC000300		Presser Adjusting Bar	압력 조절봉	1	
G-6	CPB-KB000100		Presser Bar	누름대	1	
G-7	DBS-DA004200		Presser Bar Bushing	누름대 bushes	1	
G-8	CPB-BF001300		Presser Bar Holder	누름대 잡이	1	
G-9	DSC-BF003100		Screw(11/64" n=40)	흡볼이 납작 작은나사(11/64" n=40)	1	
G-10	AGA-PS002100	A. A-7	Presser Foot Ass'y(A-TYPE)	노루발(조): A형	1Set	
G-11	AGA-PS002700	B. B-7	Presser Foot Ass'y(B-TYPE)	노루발(조): B형	1Set	
G-12	DSC-BA000200		Screw(9/64" n=40)	흡볼이 납비 작은나사(9/64" n=40)	1	
G-13	CPB-CM000300		Presser Lifter	누름대 올리기	1	
G-14	DWS-AA003800		Washer For G-13	상축 헛트 washer	1	
G-15	DSC-BJ000300		Screw(9/64" n=40)	흡볼이 등근납작 작은나사(9/64" n=40)	1	
G-16	CPB-DF000300		Presser Lifter Cam Shaft	누름대 올리기 캠축	1	
G-17	PPK-BA000400		O-Ring For G-16	상축 유량 조절핀 오링	1	
G-18	APM-PS000501		Presser Lifter Link	누름대 올리기 링크	1Set	
G-19	DSC-FH000700		Hinge Screw For G-18	수동 올림 링크 힌지 나사	1	
G-20	PSR-AC000200		E-Ring(φ5)	E링(φ5)	2	
G-21	DCL-AA008800		Collar For Trust	트러스트 카라	1	
G-22	DSC-BJ001100		Screw(9/64" n=40)	흡볼이 등근납작 작은나사(9/64" n=40)	1	
G-23	CPM-CM002400		Presser Lifter Lever	누름대 올림 레버	1	
G-24	CPM-BH000300		Presser Lifter Connection Bar	누름대 올리기 연결봉	1	
G-25	DSC-FC000100		Stud Screw For G-24	누름대 올리기 연결봉 단나사	1	
G-26	CPM-CA001600		Knee Lifting Link	무릎 올림 링크	1	
G-27	DSC-FA006000		Hinge Screw For G-26	무릎 올림 링크 힌지 나사	1	
G-28	CPM-CR000800		Knee Lifting Bar	무릎 올림봉	1	
G-29	DSC-FA000700		Hinge Screw For G-28	무릎 올림봉 힌지 나사	1	
G-30	CTR-CA001200		Tension Release Link	실늦추기 링크	1	
G-31	DSC-FA018900		Screw For G-30	실늦추기 링크 단나사	1	
G-32	ATR-PS000600		Tension Release Plate	실늦추기 판(조)	1Set	
G-33	DSC-FH000800		Hinge Screw For G-32	실늦추기 판 힌지나사	1	
G-34	PSR-AC000400		E-Ring(φ3)	틀니 받침 볼린 축 E링 3	1	
G-35	DSP-AB004700		Spring For G-32	실늦추기 스프링	1	
G-36	ATR-PS000100	A-7, B-7	Tension Release Cable(Ass'y)	실늦추기 케이블(조)	1Set	
G-37	CTR-BG000300	A-7, B-7	Tension Release Cable Holder(U)	실늦추기 케이블잡이(U)	1	
G-38	DSC-BB004000	A-7, B-7	Screw(3/16" n=28)	흡볼이 절지 작은나사(3/16" n=28)	1	
G-39	DSC-BF003600	A-7, B-7	Screw(11/64" n=40)	흡볼이 납작 작은나사(11/64" n=40)	1	
G-40	DSC-HZ001100	A-7, B-7	Cable Connection Bolt	케이블 연결 볼트	1	
G-41	PSN-AA001700	A-7, B-7	Nut For Cable Connection Bolt "B"	케이블 연결 너트(B)	1	
G-42	DSN-AA002400	A-7, B-7	Nut For Cable Connection Bolt "A"	케이블 연결 너트(A)	1	
G-43	CLB-BH000400	A-7, B-7	Tension Release Cable Holder(M)	헛트잡이 스프링	1	
G-44	DSC-BF000600	A-7, B-7	Screw(3/16" n=28)	흡볼이 납작 작은나사(3/16" n=28)	1	
G-45	CTR-BG000300	A-7, B-7	Tension Release Cable Holder(L)	실늦추기 케이블잡이(L)	1	
G-46	DSC-BF003600	A-7, B-7	Screw(11/64" n=40)	흡볼이 납작 작은나사(11/64" n=40)	1	

NOTE:

- A-7=KM-350A-7S
- B-7=KM-350B-7S
- A=KM-350A
- B=KM-350B
- =Common Part

Thread Wiper Mechanism 와이퍼 관제



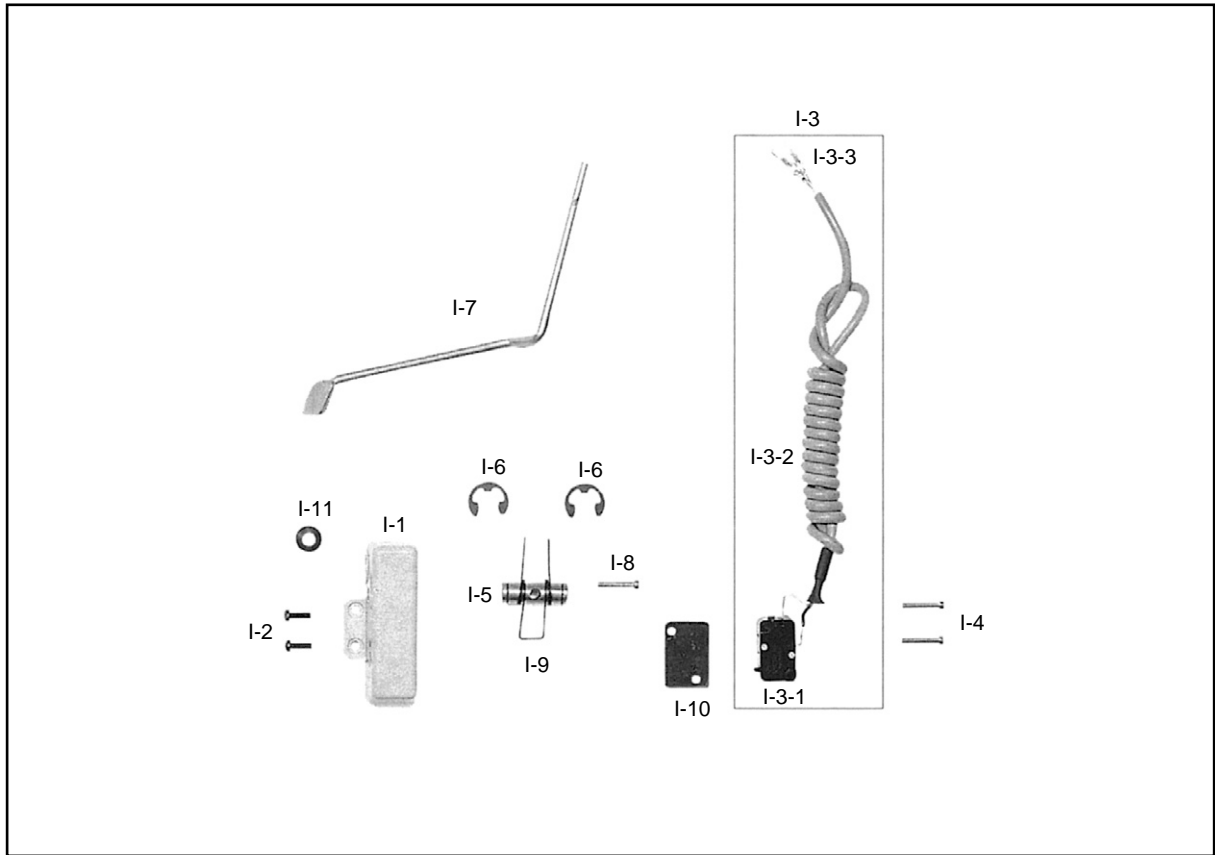
Ref. No.	Parts No.	Note	Name of Parts	품명	Q' ty	Applied Period
H-1	AWP-PS000800	A-7, B-7	Wiper Bracket Ass'y	와이퍼 브라켓(조)	1Set	
H-2	DSC-BF000600	A-7, B-7	Screw(3/16" n = 28)	홈볼이 납작 작은나사(3/16" n=28)	2	
H-3	CWP-KC000300	A-7, B-7	Wiper Rotation Shaft	와이퍼 회전축	1	
H-4	PSR-AC000200	A-7, B-7	E-Ring(φ5)	E링(φ5)	1	
H-5	CWP-BH000200	A-7, B-7	Wiper	와이퍼	1	
H-7	DSC-BA000100	A-7, B-7	Screw(9/64" n = 40)	홈볼이 냄비 작은나사(9/64" n=40)	1	
H-8	AWP-PS000200	A-7, B-7	Wiper Crank Ass'y	와이퍼 크랭크(조)	1Set	
H-9	PSC-CB000200	A-7, B-7	Screw(M4)	육각구멍볼이 멈춤나사(M4)	2	
H-10	DSC-FA000800	A-7, B-7	Hinge Screw For H-8	지그재그 연결 링크 단나사(도금)	1	
H-11	DSN-AA000900	A-7, B-7	Nut(11/64" n = 40)	육각너트(11/64" n = 40)	1	
H-12	CWP-CA001200	A-7, B-7	Wiper Rod	와이퍼 로드	1	
H-13	DSC-FA000800	A-7, B-7	Hinge Screw For H-12	지그재그 연결 링크 단나사(도금)	1	
H-14	DSN-AA000900	A-7, B-7	Nut(11/64" n = 40)	육각너트(11/64" n = 40)	1	
H-15	AWP-PS000300	A-7, B-7	Wiper Driving Link Ass'y	와이퍼 요동링크(조)	1Set	
H-16	DSC-FA000900	A-7, B-7	Hinge Screw For H-15	와이퍼 요동링크 힌지 나사	1	
H-17	DWS-AA000600	A-7, B-7	Washer For H-15	스토퍼 첩와셔	1	
H-18	DSN-AA000600	A-7, B-7	Nut(3/16" n = 32)	육각너트(3/16" n = 32)	1	
H-19	CWP-CA000100	A-7, B-7	Wiper Solenoid Connection Link	와이퍼 솔레노이드 연결링크	1	
H-20	DSC-FA000800	A-7, B-7	Hinge For H-19	지그재그 연결 링크 단나사(도금)	1	
H-21	DSN-AA000900	A-7, B-7	Nut(11/64" n = 40)	육각너트(11/64" n = 40)	1	
H-22	DSP-AC000200	A-7, B-7	Wiper Spring	와이퍼 스프링	1	
H-23	CWP-BB000100	A-7, B-7	Wiper Base	와이퍼 베이스	1	
H-24	DSC-BF000600	A-7, B-7	Screw(3/16" n = 28)	홈볼이 납작 작은나사(3/16" n=28)	3	
H-25	CWP-LA000400	A-7, B-7	Wiper Cover	와이퍼 커버	1	
H-26	DSC-BA000100	A-7, B-7	Screw(9/64" n = 40)	홈볼이 냄비 작은나사(9/64" n=40)	2	
H-27	DSD-AA000800	A-7, B-7	Wiper Solenoid Ass'y	와이퍼 솔레노이드(SWP-5)	1Set	
H-28	PSC-BA000100	A-7, B-7	Screw(M3×0.5)	홈볼이 냄비 작은나사(M3×0.5)	4	
H-29	PWS-CA000100	A-7, B-7	Spring Washer For H-27	솔레노이드 부착 스프링 와셔	4	
H-30	PWS-AA000500	A-7, B-7	Washer For H-27	솔레노이드 부착 평와셔	4	

NOTE:

A-7=KM-350A-7S
 B-7=KM-350B-7S
 A=KM-350A
 B=KM-350B
=Common Part

Reverse Button Mechanism

역진 버튼 관계

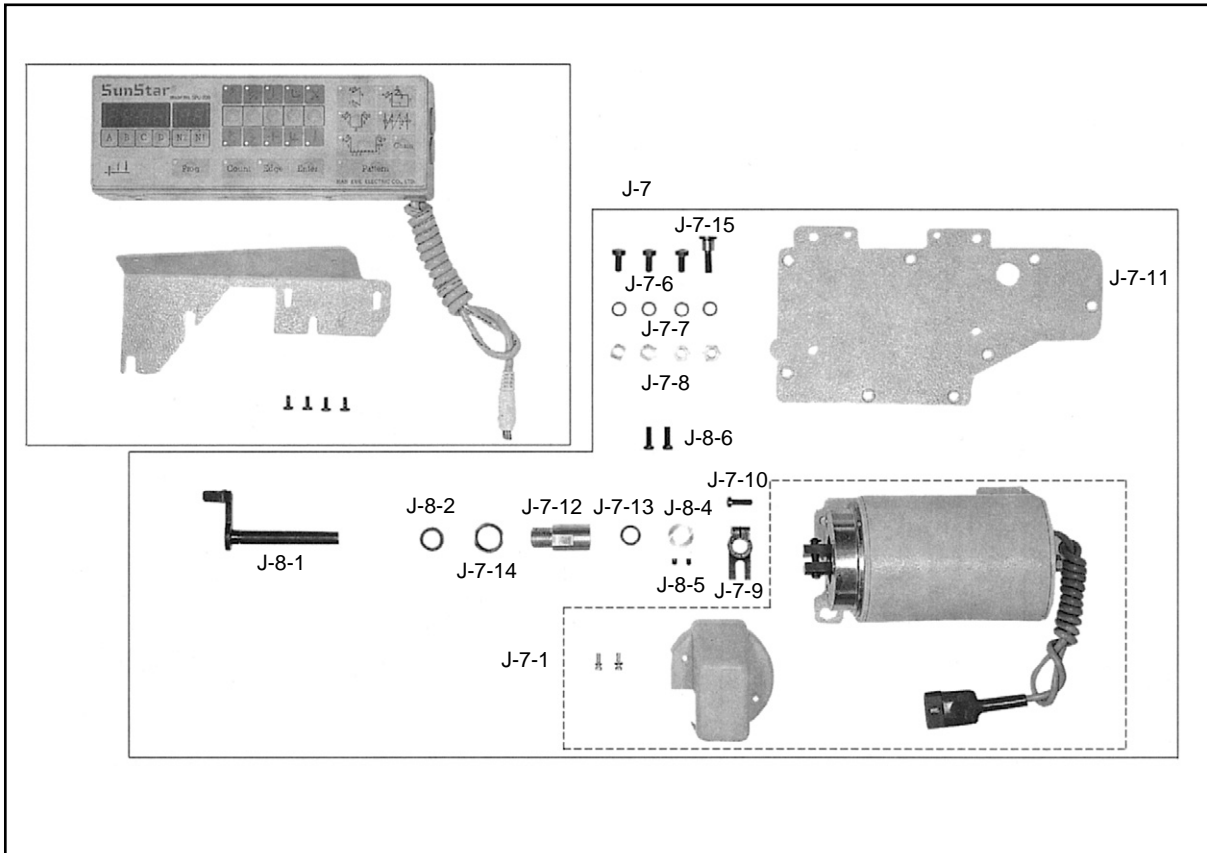


Ref. No.	Parts No.	Note	Name of Parts	품 명	Q' ty	Applied Period
I-1	CRB-LC000100	A-7, B-7	Reverse Button Ass'y	버튼 케이스	1	
I-2	DSC-BF008400	A-7, B-7	Screw(9/64" n = 40)	홈볼이 동근납작 작은나사(9/64" n=40)	2	
I-3	12-131A-5607	A-7, B-7	Reverse Button S/W Ass'y	역진 버튼 스위치(조)	1Set	
I-4	DSC-BJ005500	A-7, B-7	Screw(M2×0.4)	스위치 고정볼트(M2×0.4)	2	
I-5	DPN-AA003501	A-7, B-7	Reverse Button Actuator Pin	역진 버튼 작동핀	1	
I-6	PSR-AC000100	A-7, B-7	E-Ring(φ9)	제어체 축 링(E링9)	2	
I-7	ARB-PS000800	A-7, B-7	Reverse Feed Control Lever	역진 작동 레버(조)	1	
I-8	DSC-BA001100	A-7, B-7	Screw(11/64" n = 40)	홈볼이 냄비 작은나사(11/64" n=40)	1	
I-9	DSP-AC002200	A-7, B-7	Spring For I-7	역진 버튼 스위치 누름대 스프링	1	
I-10	CRB-FD000100	A-7, B-7	Insulated Rubber	스위치 받침 절연 고무	1	
I-11	DPK-CB001900	A-7, B-7	Reverse Button Cable Bushing	역진 버튼 케이블 붓싱	1	

NOTE:

A-7=KM-350A-7S
 B-7=KM-350B-7S
 A=KM-350A
 B=KM-350B
 □=Common Part

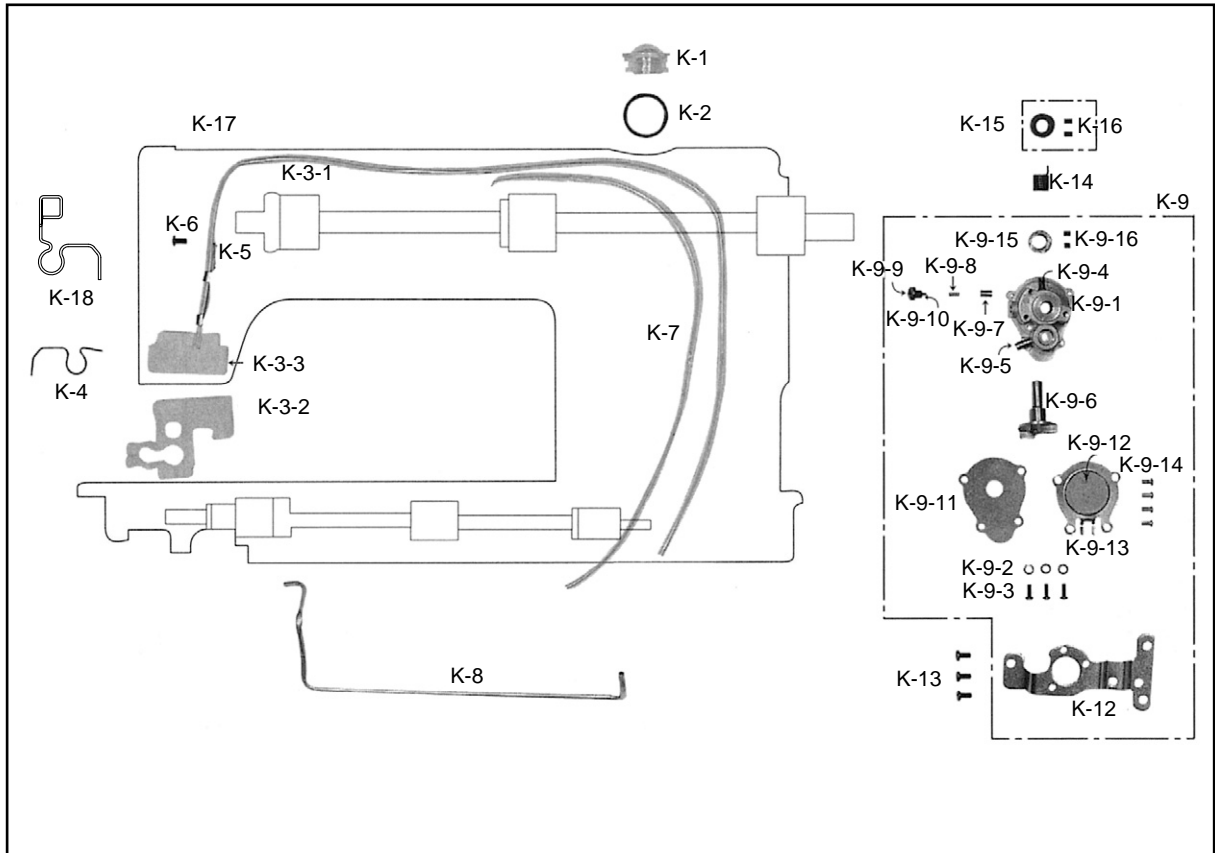
Program Unit Box & Presser Lifting Solenoid Mechanism 프로그램 유닛 박스 및 자동 무릎 올림 관계



Ref. No.	Parts No.	Note	Name of Parts	품 명	Q' ty	Applied Period
J-7	KM-2507	A-7, B-7	Auto Knee Lifter Solenoid Ass'y	자동 무릎 올림 솔레노이드(조)	1Set	
J-7-1	HEC-2507	A-7, B-7	Auto Knee Lifter Solenoid Ass'y	자동 무릎 올림장치(SPF-5)	1	
J-7-6	DSC-BF000700	A-7, B-7	Screw(15/64" n = 28)	홈볼이 납작 작은나사(15/64" n=28)	3	
J-7-7	DWS-AA014400	A-7, B-7	Washer For J-7-4, J-7-5	포크 접나사 외셔	4	
J-7-8	DSN-AA000700	A-7, B-7	Nut(15/64" n = 28)	육각너트(15/64" n=28)	4	
J-7-9	CPM-CB001301	A-7, B-7	Knee Lifter Connection Crank	자동 무릎올림 연결 크랭크(AK)	1	
J-7-10	DSC-BF001100	A-7, B-7	Screw(3/16" n = 28)	홈볼이 납작 작은나사(3/16" n=28)	1	
J-7-11	CMB-LB008200	A-7, B-7	Back Cover For Knee Lifter	자동 무릎올림 뒷뚜껑(AK)	1	
J-7-12	DBS-DA028100	A-7, B-7	Knee Lifter Shaft Bushing	자동 무릎올림축 붓싱(AK)	1	
J-7-13	PPK-AD000100	A-7, B-7	Oil Seal For J-7-12	자동 무릎올림축 오일 셸(AK)	1	
J-7-14	DSN-CY000600	A-7, B-7	Nut For Knee Lifter	자동 무릎 올림 너트(AK)	1	
J-8-1	APM-PS001200	A-7, B-7	Knee Lifter Shaft	자동 무릎 올림축(조)(AK)	1	
J-8-2	DWS-AA011800	A-7, B-7	Washer For J-8-1	역진 레버 외셔	1	
J-8-4	DCL-AA005000	A-7, B-7	Collar For J-8-1	자동 무릎올림축 카라(AK)	1	
J-8-5	DSC-CA000400	A-7, B-7	Screw(11/64" n = 40)	홈볼이 멈춤나사(11/64" n=40)	2	
J-8-6	DSC-BF000600	A-7, B-7	Screw(3/16" n = 28)	다이알판 접나사(3/16" n=28)	2	

NOTE:

A-7=KM-350A-7S
 B-7=KM-350B-7S
 A=KM-350A
 B=KM-350B
=Common Part



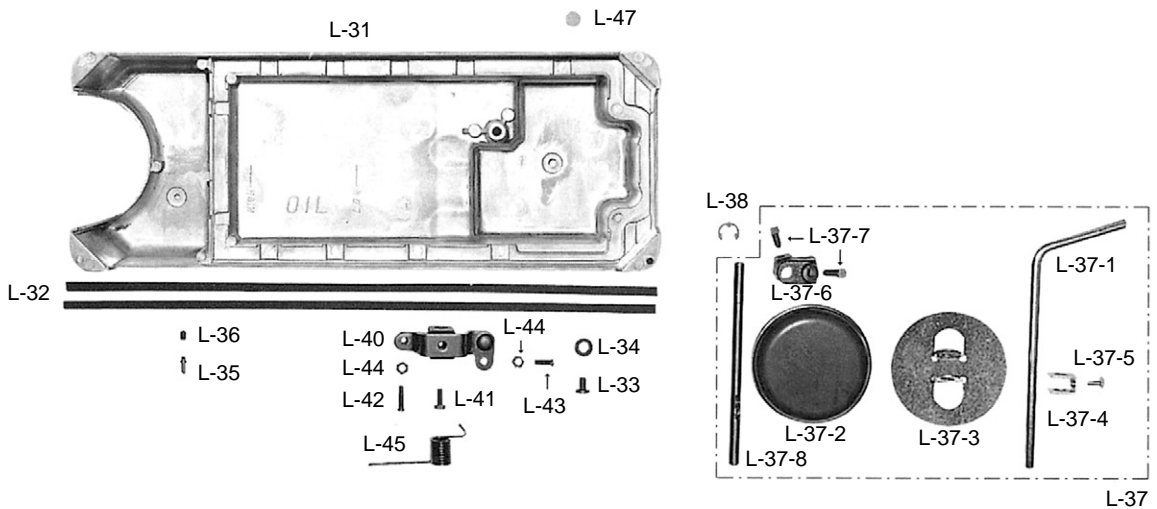
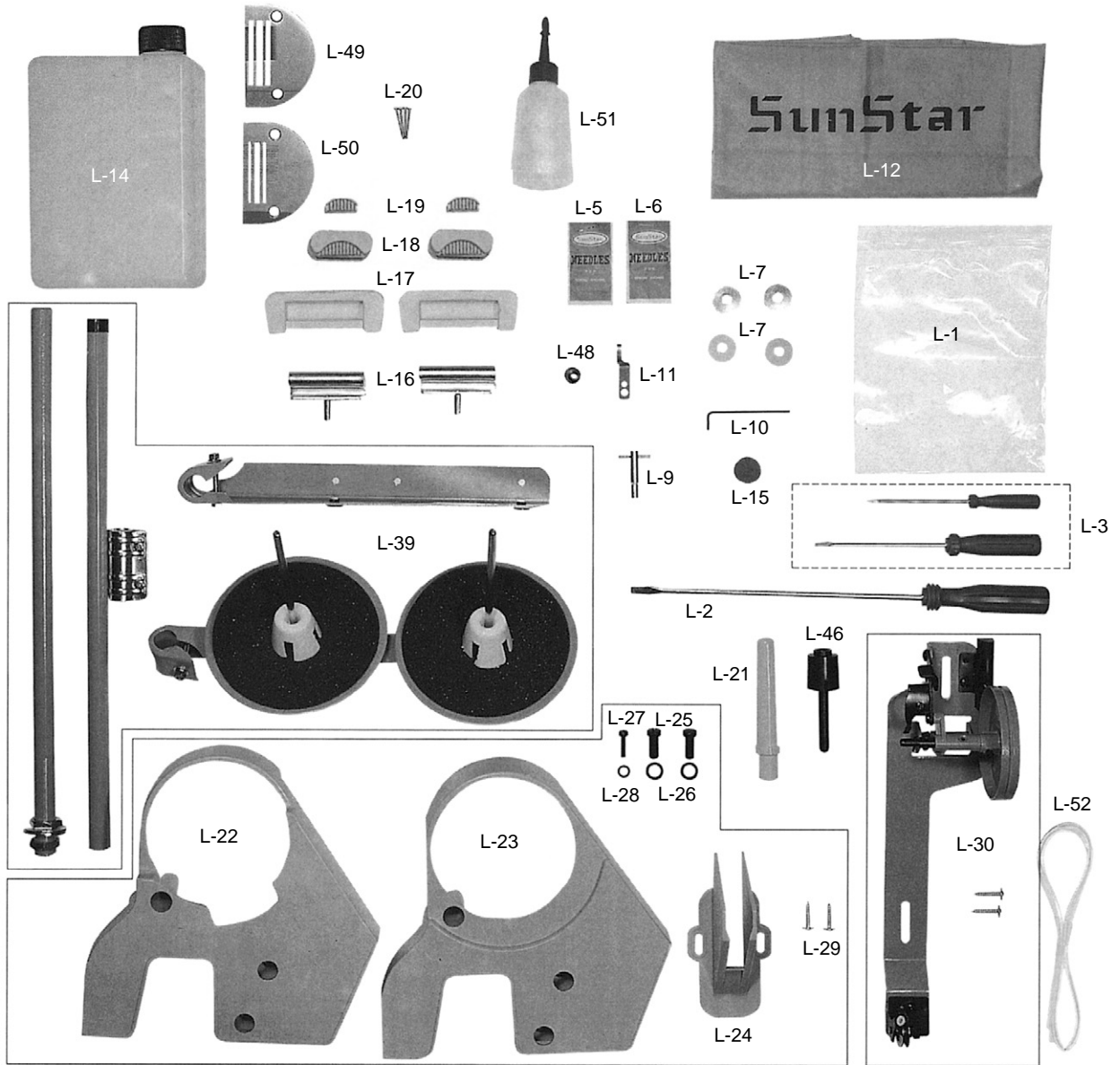
Ref. No.	Parts No.	Note	Name of Parts	품명	Q'ty	Applied Period
K-1	CLB-JJ000400		Oil Gauge Window	유창	1	
K-2	PPK-BB000100		O-Ring For K-1	유창 O-Ring(G25)	1	
K-3-1	CLB-JG000300		Oil Return Tube	환류 파이프	1	
K-3-2	44-052C-3500		Oil Return Felter(A)	환류 펠트(A)	1	
K-4	CLB-BH002000		Oil Return Felter Holder	환류 펠트잡이	1	
K-5	CLB-BG002200		Oil Return Pipe Holder	환류 파이프잡이	1	
K-6	DSC-BF000600		Screw(3/16" n = 28)	홈볼이 납작 작은나사 (3/16" n=28)	1	
K-7	ALB-PS002400		Upper Shaft Oil Pipe Ass'y	상축 급유 파이프(조)	1	
K-8	CLB-JF000500		Oil Pipe For Lower Shaft	하축 급유 파이프	1	
K-9	ALB-PS000700		Oil Pump Ass'y	오일 펌프(조)	1Set	
K-9-1	CLB-JC000200		Oil Pump Body	오일 펌프 몸체	1	
K-9-2	PWS-CA000200		Washer For K-9-1	오일 펌프 몸체 짐나사 와셔(φ4)	3	
K-9-3	DSC-BJ000300		Screw(9/64" n = 40)	홈볼이 둥근납작 작은나사(9/64" n=40)	3	
K-9-4	CLB-JP000500		Nipple For Oil Return Pipe	환류 파이프 니플	1	
K-9-5	CLB-JP000601		Oil Nipple For Lower Shaft	하축 급유 니플	1	Apr. 29. 10
K-9-6	CLB-BR000100		Impeller	임펠러	1	
K-9-7	CLB-CN000200		Piston	피스톤	1	
K-9-8	DSP-AA002700		Piston Spring	피스톤 스프링	1	
K-9-9	DSC-BF007400		Pin Screw For K-9-8	피스톤 스프링 핀나사	1	
K-9-10	PPN-AF000900		Pin For K-9-8	피스톤 스프링 핀(RP 2×8)	1	
K-9-11	CLB-LB000100		Cover For Oil Pump	오일 펌프 커버	1	
K-9-12	CLB-JM000400		Oil Pump Cap	오일 펌프 헬타 캡	1	
K-9-13	CLB-BG002100		Magnetic Holder	자석잡이	1	
K-9-14	DSC-BA000100		Screw(9/64" n = 40)	홈볼이 납비 작은나사(9/64" n=40)	4	
K-9-15	DCL-AA001500		Collar For Impeller Shaft	오일 펌프 카라	1	
K-9-16	DSC-CA000400		Screw(11/64" n = 40)	홈볼이 멈춤나사(11/64" n=40)	2	
K-12	CLB-BB000301		Oil Pump Bracket	오일 펌프 브라켓	1	
K-13	DSC-BF000600		Screw(3/16" n = 28)	홈볼이 납작 작은나사 (3/16" n=28)	3	
K-14	DSP-AC002300		Oil Pump Connection Spring	오일 펌프 조인트 스프링	1	
K-15	DCL-AA002600		Oil Pump Connection Collar	오일 펌프 조인트 카라(조)	1	
K-16	DSC-CA001600		Screw(11/64" n = 40)	홈볼이 멈춤나사(11/64" n=40)	2	
K-17	CLB-JL010600		Oil Return Felter(B)	환류 펠트(B)	1	
K-18	CLB-BH002000		Return Oil Felt Presser	환류 펠트 잡이	1	

NOTE:

A-7=KM-350A-7S
 B-7=KM-350B-7S
 A=KM-350A
 B=KM-350B
 □=Common Part



Accessories 액세서리



Ref. No.	Parts No.	Note	Name of Parts	품 명	Q' ty	Applied Period
L-1	CAC-MH000100		Accessory Box	액세서리 박스	1	
L-2	PTL-BA000100		Driver(Large)	드라이버(大)	1	
L-3	PTL-BA000200		Driver(Middle, Small)	드라이버(中, 小)	1	
L-5			Needle(A-Type)	바늘(A형)	5	
L-6			Needle(B-Type)	바늘(B형)	5	
L-7	CHK-HB000600		Bobbin(AL)	보빈	4	
L-9	DTL-CC000100	A-7, B-7	Spanner	고정 메스 장력 조절용 스패너	1	
L-10	PTL-AB000100	A-7, B-7	L-Wrench(2mm)	L렌치(2mm)	1	
L-11	CTT-NB000900	A-7, B-7	Fixed Mes	고정메스(7AN701)	1	
L-12	CAC-MA000500		Head Cover	미싱 커버(大)	1	
L-14	CAC-JB000200		Oil Tank	오일 캔	1	
L-15	DTC-AK000300		Magnetic	자석	1	
L-16	CST-BB002500		Head Hinge	힌지	2	
L-17	CST-FF000400		Rubber Cushion For Hinge	힌지 고무(大)	2	
L-18	CST-FD001100		Head Support Rubber "A"	힌지 고무(中)	2	
L-19	CST-FD001200		Head Support Rubber "B"	힌지 고무(小)	2	
L-20			Nail	못	8	
L-21	CST-CR000400		Head Rest	미싱 받침대	1	
L-22	CMB-LA006100		Belt Cover "A"	벨트 커버 "A"(SERVO)	1	
L-23	CMB-LA020000	A-7N, B-7N	Belt Cover "A"(For NP Motor)	벨트 커버 "A"(NP)	1	
L-24	CMB-LA006200		Belt Cover "B"	벨트 커버 "B"	1	
L-25	DSC-BJ005600		Screw(5/16" n = 24)	홈볼이 둥근납작 작은나사(5/16" n=24)	2	
L-26	DWS-AA002900		Washer For L-22, 23	새들 쥘나사 와셔	2	
L-27	DSC-BA000400		Screw(3/16" n = 28)	홈볼이 납비 작은나사(3/16" n=28)	1	
L-28	DWS-AA000600		Washer For L-22, 23	스토퍼 쥘와셔	1	
L-29	PSC-DD000100		Nail For L-24	목나사	2	
L-30	AAC-PS000101		Bobbin Winder Ass'y	실감기(조)	1Set	
L-31	CST-JA000800		Oil Pan	오일 팬	1	
L-32	CAC-MG000300		Oil Pan Gasket	오일 팬 가스켓	2	
L-33	DSC-BF006100		Screw (M8×1.25)	홈볼이 납작 작은나사(M8×1.25)	1	
L-34	CST-FB000200		Packing For L-33	배유 구멍마개 나사오링	1	
L-35	CLB-JP002500		Oil Pan Nipple	오일 팬 니플	1	
L-36	DSC-CA000100		Screw(15/64" n = 28)	홈볼이 멈춤나사(15/64" n=28)	1	
L-37	43-001A-1600		Knee Lifting Assembly	무릎 올림(조)	1	
L-37-1	CST-KC001300		Knee Lifter Shaft	무릎 받침축	1	
L-37-2	CST-FZ000100		Knee Lifter Pad	무릎 받침 고무	1	
L-37-3	CST-J000401		Knee Lifter Pad Insert Plate	무릎 받침 고무잡이판	1	
L-37-4	CST-CA000200		Knee Lifter Lever	무릎 올림 레버	1	
L-37-5	DSC-AA002700		Set Screw For L-37-4	무릎 받침 연결 링크 쥘나사	1	
L-37-6	CST-CB000300		Knee Lifter Arm Joint Complete	무릎 받침 연결 크랭크	1	
L-37-7	DSC-CC000100		Screw(5/16" n = 18)	사각 멈춤나사(5/16" n=18)	2	
L-37-8	CST-KC001200		Shaft For L-40	제어체 축	1	
L-38	PSR-AC000100		E-Ring(φ9)	제어체 축 링(E링 φ9)	1	
L-39	CST-MF000100		Thread Stand Ass'y	실페 꽃이(조)	1Set	
L-40	CST-BB002900		Knee Lifting Controller	제어체	1	
L-41	DSC-AA000300		Screw(15/64" n = 28)	육각 보울트(15/64" n=28)	1	
L-42	DSC-BA002700		Screw(15/64" n = 28)	홈볼이 납비 작은나사(15/64" n=28)	1	
L-43	DSC-CA004600		Screw(15/64" n = 28)	홈볼이 납비 작은나사(15/64" n=28)	1	
L-44	DSN-AA000400		Screw(15/64" n = 28)	육각너트(15/64" n=28)	2	
L-45	DSP-AC005600		Spring For L-40	제어체 스프링	1	
L-46	CST-CR000500		Knee Base Rubber	무릎올림봉 받침 캡	1	
L-47	DPK-CB000800	A-7, B-7	Rubber Cap For L-31	바늘대 상봇싱 마개(흰색)	1	
L-48	DPK-DC000300		Packing	오일팬 누유방지 고무	1	
L-49	CGA-GA003300	A, A-7	Needle Plate(A-Type)	침판(A형)	1	
L-50	CGA-GA003400	B, B-7	Needle Plate(B-Type)	침판(B형)	1	
L-51	CAC-JB000100		Oil Tank	유차	1	
L-52	CLB-JG000300		Oil Return Tube	환류 파이프	1	

NOTE:

A-7=KM-350A-7S
 B-7=KM-350B-7S
 A=KM-350A
 B=KM-350B
=Common Part

INDEX

Parts No.	Name of Parts	Page	Ref.No.
01-001A-350A	Arm. Bed	7	A-1
01-001A-357A	Arm. Bed	7	A-3
01-010M-2350	Brand Mark	7	A-25
08-201A-250A	Thread Take Up Lever Ass'y	8	B-27
11-018M-2350	Solenoid Terminal(12P)	13	D-115
11-019M-2350	Terminal Tube(L)	13	D-114
12-0000-4701	Synchronizer For N·P Ass'y	24	M-6
12-016M-2350	Earth Line	7	A-29
12-131A-5607	Reverse Button S/W Ass'y	19	I-3
43-001A-1600	Knee Lifting Assembly	23	L-37
44-052C-3500	Oil Return Felter(A)	21	K-3-2
AAC-PS000101	Bobbin Winder Ass'y	23	L-30
AFA-PS000100	Dial Shaft Eccentric Stopper	13	D-119
AFA-PS000600	Reverse Feed Lever Crank Ass'y	13	D-81
AGA-PS002100	Presser Foot Ass'y(A-TYPE)	17	G-10
AGA-PS002700	Presser Foot Ass'y(B-TYPE)	17	G-11
ALB-PS000700	Oil Pump Ass'y	21	K-9
ALB-PS002400	Upper Shaft Oil Pipe Ass'y	21	K-7
AMB-GA001400	Slide Plate	7	A-34
ANB-PS000601	Needle Bar Frame	16	F-1
APM-PS000501	Presser Lifter Link	17	G-18
APM-PS001200	Knee Lifter Shaft	20	J-8-1
ARB-PS000800	Reverse Feed Control Lever	19	I-7
AS-003741-00	Arm. Bed	7	A-4
AS-003742-00	Arm. Bed	7	A-2
ATA-PS001200	Sub Upper Thread Tension Control Ass'y	7	A-49
ATA-PS003900	Thread Tension Control Ass'y	7	A-57
ATA-PS004100	Thread Tension Control Ass'y	7	A-58-1
ATR-PS000100	Tension Release Cable(Ass'y)	17	G-36
ATR-PS000600	Tension Release Plate	17	G-32
AWP-PS000200	Wiper Crank Ass'y	18	H-8
AWP-PS000300	Wiper Driving Link Ass'y	18	H-15
AWP-PS000800	Wiper Bracket Ass'y	18	H-1
CAC-JB000100	Oil Tank	23	L-51
CAC-JB000200	Oil Tank	23	L-14
CAC-MA000500	Head Cover	23	L-12
CAC-MG000300	Oil Pan Gasket	23	L-32
CAC-MH000100	Accessory Box	23	L-1
CFA-BB000200	Bracket For Reverse Feed Solenoid	13	D-96
CFA-BJ000300	B/T Spring Holder	13	D-74
CFA-CA000300	Feed Regulator Link	11	D-9
CFA-CA001300	Feed Regulator Link	11	D-10
CFA-CB000300	Reverse Feed Lever Crank Ass'y	13	D-80
CFA-CB000400	Reverse Feed Solenoid Crank	13	D-100
CFA-CC000200	Feed Regulating Rod	13	D-72
CFA-CC000301	Reverse Solenoid Connecting Rod	13	D-104
CFA-CC000900	Connecting Rod For Feed Regulator	13	D-72-1
CFA-CM000200	Feed Regulator Lever	13	D-109
CFA-CQ000100	Feed Regulator Control Plate(4mm)(INSERT)	13	D-117
CFA-CQ001000	Feed Regulator Control Plate(5mm)	13	D-91
CFA-CQ001000	Feed Regulator Control Plate(5mm)(INSERT)	13	D-118
CFA-CQ002200	Feed Regulator Control Plate(4mm)	13	D-90
CFA-DF000101	Feed Regulator	13	D-66
CFA-DF000800	Feed Regulator	13	D-67
CFA-FZ000100	Stopper Rubber For D-109	13	D-112
CFA-KF000100	Reverse Feed Control Lever Shaft	13	D-78
CFA-KF000201	Feed Regulator Shaft	11	D-63
CFA-KF000300	Feed Adjusting Shaft	13	D-71
CFA-KJ000100	Feed Regulator Dial Shaft	13	D-88
CGA-GA003300	Needle Plate(A-TYPE)	7	A-31
CGA-GA003300	Needle Plate(A-Type)	23	L-49

Parts No.	Name of Parts	Page	Ref.No.
CGA-GA003400	Needle Plate(B-TYPE)	7	A-32
CGA-GA003400	Needle Plate(B-Type)	23	L-50
CGA-GB002200	Feed Dog(A-TYPE)	11	D-42
CGA-GB002600	Feed Dog(B-TYPE)	11	D-43
CGA-GB002700	Feed Dog (A-Type 1.5mm)	13	D-121
CHK-HA000900	Rotary Hook Ass'y	9	C-28
CHK-HA002000	Rotary Hook Ass'y	9	C-27
CHK-HA002100	Rotary Hook Ass'y	9	C-26
CHK-HB000600	Bobbin(AL)	9	C-30
CHK-HB000600	Bobbin(Steel)	9	C-31
CHK-HB000600	Bobbin(AL)	23	L-7
CHK-HC001500	Bobbin Case Ass'y	9	C-32
CHK-HH000400	Inner Bobbin Stopper	9	C-34
CKH-HA002200	Rotary Hook Ass'y	9	C-29
CLB-BB000301	Oil Pump Bracket	21	K-12
CLB-BG002100	Magnetic Holder	21	K-9-13
CLB-BG002200	Oil Return Pipe Holder	21	K-5
CLB-BG002300	Wick Holder For D-35	11	D-37
CLB-BG005300	Stopper For Wick	11	D-52
CLB-BH000400	Tension Release Cable Holder(M)	17	G-43
CLB-BH002000	Oil Return Felt Holder	21	K-4
CLB-BH002000	Return Oil Felt Presser	21	K-18
CLB-BJ003000	Base For A-41	7	A-42
CLB-BR000100	Impeller	21	K-9-6
CLB-CN000200	Piston	21	K-9-7
CLB-FG000100	Gasket	7	A-41
CLB-FZ000100	Oil Cover For D-26, 51	11	D-32
CLB-FZ001000	Oil Protection Rubber	8	B-32
CLB-JC000200	Oil Pump Body	21	K-9-1
CLB-JF000500	Oil Pipe For Lower Shaft	21	K-8
CLB-JG000300	Oil Return Tube	21	K-3-1
CLB-JG000300	Oil Return Tube	23	L-52
CLB-JJ000400	Oil Gauge Window	21	K-1
CLB-JL001601	Upper Shaft Felter	8	B-5
CLB-JL001601	Synchronizer Ass'y (Servo)	8	B-34-4
CLB-JL002400	Lower Shaft Felter	9	C-12
CLB-JL010600	Oil Return Felter(B)	21	K-17
CLB-JM000400	Oil Pump Cap	21	K-9-12
CLB-JP000500	Nipple For Oil Return Pipe	21	K-9-4
CLB-JP000601	Oil Nipple For Lower Shaft	21	K-9-5
CLB-JP002500	Oil Pan Nipple	23	L-35
CLB-LB000100	Cover For Oil Pump	21	K-9-11
CLF-CA000200	Feed Connection Link(A)	11	D-13
CLF-CA000300	Feed Connection Link(B)	11	D-14
CLF-CB000500	Feed Lifting Bell Arm	11	D-48
CLF-CB000600	Feed Lifting Shaft Crank(R): A-Type	11	D-57
CLF-CB000700	Feed Bar Crank	11	D-33
CLF-CB003200	Level Feed Crank(R)	16	F-29
CLF-CB003300	Feed Lifting Shaft Crank(R): B-Type	11	D-58
CLF-CC000100	Feed Rocker Shaft Connecting Rod	11	D-7
CLF-CC000200	Crank Rod	11	D-8
CLF-CD000400	Sliding Block	11	D-45
CLF-CR000300	Feed Bar	11	D-41
CLF-DC002300	Feed Cam A	11	D-1
CLF-DC002400	Feed Cam C	11	D-5
CLF-DC002600	Feed Cam B	11	D-3
CLF-KF000100	Feed Lifting Shaft	11	D-51
CLF-KF000200	Feed Rock Shaft	11	D-26
CLF-KH000100	Feed Bar Shaft	11	D-35
CLS-KC000701	Lower Shaft	9	C-10
CMB-BB004500	Bed Base (R)	7	A-21

Parts No.	Name of Parts	Page	Ref.No.
CMB-BJ005000	Gauge Plate	7	A-35
CMB-BJ006100	Face Plate	7	A-5
CMB-FC002400	Gasket For A-12	7	A-13
CMB-FC005700	Gasket For A-5	7	A-6
CMB-HK000500	Arm Thread Guide	7	A-53
CMB-HK001900	Thread Guide For A-5	7	A-55
CMB-HK002000	Upper Thread Guide Pin And Nut	7	A-47
CMB-HK008000	Arm Thread Guide(L)	7	A-59
CMB-LA004300	Thread Take Up Cover	7	A-8
CMB-LA006100	Belt Cover "A"	23	L-22
CMB-LA006200	Belt Cover "B"	23	L-24
CMB-LA020000	Belt Cover "A"(For NP Motor)	23	L-23
CMB-LB003700	Back Cover	7	A-12
CMB-LB008200	Back Cover For Knee Lifter	20	J-7-11
CMB-LD004900	Model Mark (KM-350A)	7	A-37
CMB-LD005000	Model Mark (KM-350B)	7	A-38
CMB-LD005100	Model Mark (KM-350A-7S)	7	A-39
CMB-LD005200	Model Mark (KM-350B-7S)	7	A-40
CMB-LD005500	Model Mark(KM-350A-7N)	24	M-1
CMB-LD005600	Model Mark(KM-350B-7N)	24	M-2
CNB-BK001801	Needle Bar Frame Guide	16	F-2
CNB-BK001900	Slide Block Guide	16	F-6
CNB-CD000201	Needle Bar Guide Slider Block	16	F-35
CNB-HK000400	Needle Bar Thread Guide(A-TYPE)	16	F-36
CNB-HK002100	Needle Bar Thread Guide(B-TYPE)	16	F-37
CNB-KA003000	Needle Bar(A-TYPE)	16	F-33
CNB-KA003200	Needle Bar(B-TYPE)	16	F-34
CPB-BF001300	Presser Bar Holder	17	G-8
CPB-CM000300	Presser Lifter	17	G-13
CPB-DF000300	Presser Lifter Cam Shaft	17	G-16
CPB-KB000100	Presser Bar	17	G-6
CPB-KC000300	Presser Adjusting Bar	17	G-5
CPM-BH000300	Presser Lifter Connection Bar	17	G-24
CPM-CA001600	Knee Lifting Link	17	G-26
CPM-CB001301	Knee Lifter Connection Crank	20	J-7-9
CPM-CM002400	Presser Lifter Lever	17	G-23
CPM-CR000800	Knee Lifting Bar	17	G-28
CRB-FD000100	Insulated Rubber	19	I-10
CRB-LC000100	Reverse Button Ass'y	19	I-1
CST-BB002500	Head Hinge	23	L-16
CST-BB002900	Knee Lifting Controller	23	L-40
CST-CA000200	Knee Lifter Lever	23	L-37-4
CST-CB000300	Knee Lifter Arm Joint Complete	23	L-37-6
CST-CR000400	Head Rest	23	L-21
CST-CR000500	Knee Base Rubber	23	L-46
CST-FB000200	Packing For L-33	23	L-34
CST-FD001100	Head Support Rubber "A"	23	L-18
CST-FD001200	Head Support Rubber "B"	23	L-19
CST-FF000400	Rubber Cushion For Hinge	23	L-17
CST-FZ000100	Knee Lifter Pad	23	L-37-2
CST-J000401	Knee Lifter Pad Insert Plate	23	L-37-3
CST-JA000800	Oil Pan	23	L-31
CST-KC001200	Shaft For L-40	23	L-37-8
CST-KC001300	Knee Lifter Shaft	23	L-37-1
CST-MF000100	Thread Stand Ass'y	23	L-39
CTR-BG000300	Tension Release Cable Holder(U)	17	G-37
CTR-BG000300	Tension Release Cable Holder(L)	17	G-45
CTR-CA001200	Tension Release Link	17	G-30
CTT-BB000700	Base For E-52	15	E-53
CTT-BB000800	Spring Holder	15	E-36
CTT-BF000100	Thread Trimming Holder	15	E-11

INDEX

Parts No.	Name of Parts	Page	Ref.No.
CTT-BF000200	Bobbin Catcher Holder	15	E-58
CTT-BH000101	Bobbin Catcher	15	E-56
CTT-BH000201	Bobbin Catcher Lever	15	E-57
CTT-BJ001100	Thread Retaining Plate	15	E-5
CTT-BJ001200	Base Plate	15	E-46
CTT-CA000400	Thread Trimming Lever Connecting Link	15	E-15
CTT-CA000500	Solenoid Connection Link	15	E-48
CTT-CB000600	Thread Trimming Lever	15	E-18
CTT-CB000700	Cam Follower Crank	15	E-30
CTT-CL000300	Roller	15	E-26
CTT-CM000501	Slide Arm	15	E-25
CTT-CM000600	Clutch Lever Ass'y	15	E-40
CTT-DF000100	Thread Trimming Cam	15	E-38
CTT-FB000200	Cushion Washer For E-20	15	E-29
CTT-FD000100	Stopper Rubber For E-56	15	E-63
CTT-FD000200	Cushion Rubber For E-32	15	E-32-1
CTT-KF000200	Thread Trimming Shaft	15	E-20
CTT-NA000600	Rotary Mes	15	E-8
CTT-NA001000	Rotary Mes	15	E-9
CTT-NB000500	Fixed Mes	15	E-1
CTT-NB000900	Fixed Mes	23	L-11
CUF-CA001900	Driving Link	16	F-9
CUF-CB002100	Driving Crank(F)	16	F-12
CUF-CB002200	Driving Crank(R)	16	F-20
CUF-CC001900	Needle Feed Connection Rod	16	F-24
CUF-KC000700	Needle Feed Connection Shaft	16	F-15
CUR-KC000100	Upright Shaft	9	C-1
CUS-BJ000200	Protection Plate For B-7, 8	8	B-33
CUS-CH000101	Oil Adjusting Pin For B-1	8	B-2
CUS-CH000101	Washer For B-34-1	8	B-34-2
CUS-DA000600	Link Cam(A-TYPE)	8	B-7
CUS-DA000600	Rubber For B-2	8	B-36
CUS-DA003000	Link Cam(B-TYPE)	8	B-8
CUS-DA003000	Sticker	8	B-37
CUS-KC000500	Upper Shaft	8	B-1
CUS-KC000500	Magnetic Holder	8	B-34-1
CUS-KC003000	Upper Shaft	24	M-3
CWP-BB000100	Wiper Base	18	H-23
CWP-BH000200	Wiper	18	H-5
CWP-CA000100	Wiper Solenoid Connection Link	18	H-19
CWP-CA001200	Wiper Rod	18	H-12
CWP-KC000300	Wiper Rotation Shaft	18	H-3
CWP-LA000400	Wiper Cover	18	H-25
DBS-DA003001	Upper Shaft Bushing(M)	8	B-14
DBS-DA003700	Upright Shaft Bushing	9	C-4
DBS-DA003800	Upright Shaft Bushing(L)	9	C-7
DBS-DA003900	Lower Shaft Bushing(R)	9	C-15
DBS-DA003900	Lower Shaft Bushing(F)	9	C-19
DBS-DA004000	Lower Shaft Bushing(M)	9	C-18
DBS-DA004100	Lower Shaft Bushing(R)	9	C-16
DBS-DA004200	Presser Bar Bushing	17	G-7
DBS-DA006700	Feed Rock Shaft Bushing(F)	11	D-30
DBS-DA006800	Feed Rock Shaft Bushing(R)	11	D-28
DBS-DA006800	Feed Lifting Shaft Bushing(R)	11	D-55
DBS-DA007100	Feed Lifting Shaft Bushing(F)	11	D-53
DBS-DA025300	Rock Shaft Bushing(F)	16	F-14
DBS-DA025400	Rock Shaft Bushing(R)	16	F-16
DBS-DA025700	Needle Bar Frame Shaft Bushing	16	F-4
DBS-DA026300	Lower Shaft Bushing(F)	9	C-20
DBS-DA028100	Knee Lifter Shaft Bushing	20	J-7-12
DBS-DB001101	Upper Shaft Bushing(R)	8	B-20

Parts No.	Name of Parts	Page	Ref.No.
DBS-DB008200	Upper Shaft Bushing(F)	8	B-12
DCL-AA000102	Upper Shaft Collar	8	B-16
DCL-AA001500	Collar For Impeller Shaft	21	K-9-15
DCL-AA001700	Collar For Lower Shaft	9	C-24
DCL-AA002600	Oil Pump Connection Collar	21	K-15
DCL-AA002800	Collar For D-63	13	D-69
DCL-AA005000	Collar For J-8-1	20	J-8-4
DCL-AA008000	Collar For Trust	17	G-21
DCL-AA008100	Collar For F-15	16	F-18
DCL-BA000600	Return Spring Guide Bushing	15	E-23
DGR-AD000100	Main Shaft Gear	8	B-18
DGR-AD000200	Upright Shaft Upper Gear(U)	9	C-2
DGR-AD000300	Upright Shaft Lower Gear	9	C-8
DGR-AD000400	Lower Shaft Gear	9	C-11
DPK-CA000600	Bed Rubber Cap	7	A-18
DPK-CB000200	Face Plate Rubber Cap(S)	7	A-11
DPK-CB000200	Arm Rubber Cap (L)	7	A-15
DPK-CB000800	Arm Rubber Cap (S)	7	A-16
DPK-CB000800	Rubber Cap For L-31	23	L-47
DPK-CB000900	Face Plate Rubber Cap(L)	7	A-10
DPK-CB001800	Rubber Cap For F-15	7	A-17
DPK-CB001900	Reverse Button Cable Bushing	19	I-11
DPK-CB002500	Rubber Cap For D-26, 51(F)	11	D-62
DPK-CC000300	Code Bushing	7	A-19
DPK-CZ000800	Cap For Tension Release Pin	7	A-63
DPK-DC000300	Packing	23	L-48
DPL-AA000200	Pulley	8	B-23
DPL-AA001300	Pully	24	M-5
DPN-AA000100	Feed Connection Link Pin(A)	11	D-11
DPN-AA003501	Reverse Button Actuator Pin	19	I-5
DPN-AA003600	Crank Rod Connection Pin	11	D-60
DPN-AA003900	Feed Connection Link Pin(B)	11	D-19
DPN-AA004000	Feed Connection Link Pin(C)	11	D-21
DPN-AA004100	Hinge Pin For D-72	11	D-23
DPN-AA014000	Needle Bar Link Pin	16	F-10
DPN-AA014600	Pin For D-90, 91	13	D-93
DPN-AA014700	Dial Pin(ININSERT)	13	D-116
DPN-AD003300	Solenoid Pin	15	E-49
DPN-AD004000	Hinge Pin For D-104	13	D-105
DPN-BB001200	Stopper Pin	15	E-34
DPN-BC001000	Feed Adjusting Link Hinge Pin(A)	11	D-15
DPN-BC001100	Feed Adjusting Link Hinge Pin(B)	11	D-17
DPS-BA001200	Thread Tension Adjusting Spring	7	A-58-2
DSC-AA000300	Screw(15/64" n = 28)	23	L-41
DSC-AA001000	Screw(3/16" n = 28)	11	D-50
DSC-AA001000	Screw(3/16" n = 28)	11	D-59
DSC-AA002700	Set Screw For L-37-4	23	L-37-5
DSC-AA003400	Screw(9/32" n = 28)	16	F-30
DSC-BA000100	Screw(9/64" n = 40)	7	A-54
DSC-BA000100	Screw(9/64" n = 40)	7	A-56
DSC-BA000100	Screw(9/64" n = 40)	18	H-7
DSC-BA000100	Screw(9/64" n = 40)	18	H-26
DSC-BA000100	Screw(9/64" n = 40)	21	K-9-14
DSC-BA000200	Screw(9/64" n = 40)	16	F-3
DSC-BA000200	Screw(9/64" n = 40)	17	G-12
DSC-BA000400	Screw(3/16" n = 28)	13	D-82
DSC-BA000400	Screw(3/16" n = 28)	16	F-7
DSC-BA000400	Screw(3/16" n = 28)	23	L-27
DSC-BA001100	Screw(11/64" n = 40)	19	I-8
DSC-BA001400	Screw(3/16" n = 32)	13	D-110
DSC-BA001800	Screw	7	A-14-3

Parts No.	Name of Parts	Page	Ref.No.
DSC-BA002700	Screw(15/64" n = 28)	23	L-42
DSC-BB001400	Screw(11/64" n = 40)	15	E-10
DSC-BB001500	Screw(M5×0.8)	13	D-97
DSC-BB002000	Screw(9/64" n = 40)	15	E-2
DSC-BB004000	Screw(3/16" n = 28)	7	A-43
DSC-BB004000	Screw(3/16" n = 28)	17	G-38
DSC-BC000100	Screw(11/64" n = 40)	7	A-33
DSC-BC000100	Screw(11/64" n = 40)	7	A-36
DSC-BF000100	Screw(1/8" n = 44)	15	E-59
DSC-BF000100	Screw(1/8" n = 44)	15	E-60
DSC-BF000100	Screw(1/8" n = 44)	16	F-38
DSC-BF000400	Screw(15/64" n = 28)	11	D-40
DSC-BF000500	Screw(11/64" n = 40)	13	D-83
DSC-BF000600	Screw(3/16" n = 28)	7	A-9
DSC-BF000600	Screw(3/16" n = 28)	7	A-14
DSC-BF000600	Screw	7	A-14-2
DSC-BF000600	Screw(3/16" n = 28)	15	E-37
DSC-BF000600	Screw(3/16" n = 28)	15	E-47
DSC-BF000600	Screw(3/16" n = 28)	17	G-44
DSC-BF000600	Screw(3/16" n = 28)	18	H-2
DSC-BF000600	Screw(3/16" n = 28)	18	H-24
DSC-BF000600	Screw(3/16" n = 28)	20	J-8-6
DSC-BF000600	Screw(3/16" n = 28)	21	K-6
DSC-BF000600	Screw(3/16" n = 28)	21	K-13
DSC-BF000700	Screw(15/64" n = 28)	15	E-55
DSC-BF000700	Screw(15/64" n = 28)	20	J-7-6
DSC-BF000800	Screw(15/64" n = 28)	8	B-25
DSC-BF001000	Screw(11/64" n = 40)	9	C-35
DSC-BF001100	Screw(3/16" n = 28)	16	F-13
DSC-BF001100	Screw(3/16" n = 28)	16	F-21
DSC-BF001100	Screw(3/16" n = 28)	20	J-7-10
DSC-BF001800	Screw(1/8" n = 44)	11	D-44
DSC-BF001900	Screw(3/16" n = 28)	13	D-92
DSC-BF002600	Screw(3/16" n = 32)	11	D-34
DSC-BF003100	Screw(11/64" n = 40)	13	D-68
DSC-BF003100	Screw(11/64" n = 40)	17	G-9
DSC-BF003600	Screw(11/64" n = 40)	11	D-22
DSC-BF003600	Screw(11/64" n = 40)	11	D-25
DSC-BF003600	Screw(11/64" n = 40)	11	D-61
DSC-BF003600	Screw(11/64" n = 40)	13	D-106
DSC-BF003600	Screw(11/64" n = 40)	17	G-39
DSC-BF003600	Screw(11/64" n = 40)	17	G-46
DSC-BF003700	Screw(9/32" n = 28)	8	B-9
DSC-BF004000	Screw(3/16" n = 32)	9	C-22
DSC-BF006100	Screw (M8×1.25)	23	L-33
DSC-BF006200	Screw(1/8" n = 40)	15	E-3
DSC-BF006300	Screw(11/64" n = 40)	11	D-12
DSC-BF006300	Screw(11/64" n = 40)	15	E-50
DSC-BF006500	Screw(9/64" n = 40)	16	F-11
DSC-BF007000	Cap Screw For Lower Shaft Oil	9	C-13
DSC-BF007200	Stopper Screw	15	E-32
DSC-BF007400	Pin Screw For K-9-8	21	K-9-9
DSC-BF007700	Screw(1/8" n = 44)	11	D-38
DSC-BF007900	Screw(3/16" n = 32)	11	D-47
DSC-BF008400	Screw(3/16" n = 28)	7	A-7
DSC-BF008400	Screw	7	A-14-1
DSC-BF008400	Screw(9/64" n = 40)	19	I-2
DSC-BG000200	Screw(5/16" n = 24)	8	B-26
DSC-BJ000200	Screw(11/64" n = 40)	15	E-6
DSC-BJ000300	Screw(9/64" n = 40)	13	D-75
DSC-BJ000300	Screw(9/64" n = 40)	17	G-15

INDEX

Parts No.	Name of Parts	Page	Ref.No.
DSC-BJ000300	Screw(9/64" n = 40)	21	K-9-3
DSC-BJ001100	Screw(9/64" n = 40)	17	G-22
DSC-BJ002000	Screw For E-30	15	E-31
DSC-BJ002400	Screw(3/16" n = 32)	13	D-111
DSC-BJ005500	Screw(M2×0.4)	19	I-4
DSC-BJ005600	Screw(5/16" n = 24)	23	L-25
DSC-CA000100	Screw(15/64" n = 28)	7	A-61
DSC-CA000100	Screw(15/64" n = 28)	9	C-21
DSC-CA000100	Screw(15/64" n = 28)	11	D-29
DSC-CA000100	Screw(15/64" n = 28)	11	D-31
DSC-CA000100	Screw(15/64" n = 28)	11	D-54
DSC-CA000100	Screw(15/64" n = 28)	11	D-56
DSC-CA000100	Screw(15/64" n = 28)	16	F-19
DSC-CA000100	Screw(15/64" n = 28)	23	L-36
DSC-CA000300	Screw(3/16" n = 28)	16	F-5
DSC-CA000300	Screw(3/16" n = 28)	16	F-17
DSC-CA000400	Screw(11/64" n = 40)	20	J-8-5
DSC-CA000400	Screw(11/64" n = 40)	21	K-9-16
DSC-CA000500	Screw(1/4" n = 40)	8	B-17
DSC-CA000500	Screw(1/4" n = 40)	8	B-19
DSC-CA000500	Screw(1/4" n = 40)	8	B-28
DSC-CA000500	Screw(1/4" n = 40)	9	C-3
DSC-CA000500	Screw(1/4" n = 40)	9	C-9
DSC-CA000500	Screw(1/4" n = 40)	9	C-14
DSC-CA000800	Screw(15/64" n = 28)	8	B-15
DSC-CA000800	Screw(15/64" n = 28)	8	B-31
DSC-CA000800	Screw(15/64" n = 28)	9	C-6
DSC-CA000800	Screw(15/64" n = 28)	9	C-17
DSC-CA000800	Screw(15/64" n = 28)	13	D-65
DSC-CA001100	Screw(1/4" n = 40)	11	D-6
DSC-CA001100	Screw(1/4" n = 40)	11	D-16
DSC-CA001100	Screw(1/4" n = 40)	11	D-18
DSC-CA001500	Screw(15/64" n = 28)	15	E-65
DSC-CA001600	Screw(11/64" n = 40)	7	A-50
DSC-CA001600	Screw(11/64" n = 40)	21	K-16
DSC-CA001900	Screw(1/4" n = 40)	11	D-2
DSC-CA001900	Screw(1/4" n = 40)	13	D-70
DSC-CA002300	Screw(11/64" n = 40)	16	F-28
DSC-CA002400	Screw	16	F-1-1
DSC-CA004600	Screw(15/64" n = 28)	23	L-43
DSC-CB000400	Screw(1/4" n = 40)	15	E-39
DSC-CB000700	Screw(M5)	7	A-65
DSC-CB001000	Screw(11/64" n = 40)	9	C-25
DSC-CC000100	Screw(5/16" n = 18)	23	L-37-7
DSC-FA000700	Hinge Screw For G-28	17	G-29
DSC-FA000800	Hinge Screw For H-8	18	H-10
DSC-FA000800	Hinge Screw For H-12	18	H-13
DSC-FA000800	Hinge For H-19	18	H-20
DSC-FA000900	Hinge Screw For H-15	18	H-16
DSC-FA005600	Stud Screw For E-15	15	E-16
DSC-FA005700	Stud Screw For E-48	15	E-44
DSC-FA006000	Hinge Screw For G-26	17	G-27
DSC-FA006200	Stopper Stud Screw For D-109	13	D-113
DSC-FA006300	Stud Screw For D-100	13	D-101
DSC-FA008600	Hinge Screw For D-104	13	D-102
DSC-FA018900	Screw For G-30	17	G-31
DSC-FA019200	Stud Screw For F-20	16	F-22
DSC-FC000100	Stud Screw For G-24	17	G-25
DSC-FD000300	Clutch Lever Moving Pin Screw	15	E-43
DSC-FF002600	Guide Pin For Synchronizer	24	M-6-25
DSC-FH000200	Stud Screw For E-40	15	E-41

Parts No.	Name of Parts	Page	Ref.No.
DSC-FH000500	Holder For D-76	13	D-77
DSC-FH000700	Hinge Screw For G-18	17	G-19
DSC-FH000800	Hinge Screw For G-32	17	G-33
DSC-GA000400	Stud Screw For E-26	15	E-27
DSC-GC000700	Needle Feed Connection Rod Shaft	16	F-25
DSC-HA000100	Screw(9/16" n = 20)	17	G-1
DSC-HC000300	Bed Base "Front" (A)	7	A-20
DSC-HC000400	Bed Base "FRONT" (B)	15	E-64
DSC-HC000600	Bed Base "Front" (B)	7	A-62
DSC-HD000600	Holder For D-84, 85	13	D-86
DSC-HZ001100	Cable Connection Bolt	17	G-40
DSD-AA000800	Wiper Solenoid Ass'y	18	H-27
DSD-AA001000	Thread Trimming Solenoid Ass'y	15	E-52
DSD-AA001200	Reverse Feed Solenoid Ass'y	13	D-95-1
DSD-AA003000	Reverse Feed Solenoid Ass'y	13	D-95
DSN-AA000400	Nut(15/64" n = 28)	15	E-33
DSN-AA000400	Nut(15/64" n = 28)	15	E-42
DSN-AA000400	Nut(15/64" n = 28)	16	F-23
DSN-AA000400	Nut(15/64" n = 28)	16	F-27
DSN-AA000400	Screw(15/64" n = 28)	23	L-44
DSN-AA000600	Nut(3/16" n = 32)	15	E-28
DSN-AA000600	Nut(3/16" n = 32)	15	E-45
DSN-AA000600	Nut(3/16" n = 32)	18	H-18
DSN-AA000700	Nut(15/64" n = 28)	20	J-7-8
DSN-AA000900	Nut (11/64" n = 40)	13	D-87
DSN-AA000900	Nut(11/64" n = 40)	15	E-17
DSN-AA000900	Nut(11/64" n = 40)	18	H-11
DSN-AA000900	Nut(11/64" n = 40)	18	H-14
DSN-AA000900	Nut(11/64" n = 40)	18	H-21
DSN-AA001700	Nut(1/8" n = 40)	15	E-4
DSN-AA002000	Stud Nut	16	F-3-1
DSN-AA002400	Nut For Cable Connection Bolt "A"	17	G-42
DSN-CC000100	Presser Adjusting Nut	17	G-2
DSN-CY000600	Nut For Knee Lifter	20	J-7-14
DSP-AA001600	Spring For C-22	9	C-23
DSP-AA001700	Presser Adjusting Spring(A-TYPE)	17	G-3
DSP-AA002500	Slide Arm Return Spring	15	E-24
DSP-AA002700	Piston Spring	21	K-9-8
DSP-AA002800	Spring For D-93	13	D-94
DSP-AA005200	Dial Shaft Eccentric Stopper Spring	13	D-120
DSP-AA006200	Presser Adjusting Spring(B-TYPE)	17	G-4
DSP-AB001000	Spring For E-30	15	E-35
DSP-AB001400	Reverse Feed Spring	13	D-76
DSP-AB003500	Spring For D-109	13	D-84
DSP-AB004700	Spring For G-32	17	G-35
DSP-AB005100	Spring For D-109	13	D-85
DSP-AC000200	Wiper Spring	18	H-22
DSP-AC001700	Bobbin Catcher Spring	15	E-61
DSP-AC002200	Spring For I-7	19	I-9
DSP-AC002300	Oil Pump Connection Spring	21	K-14
DSP-AC005600	Spring For L-40	23	L-45
DTC-AH000200	Code Holder "A"	7	A-26
DTC-AH001100	Code Holder "B"	7	A-27
DTC-AK000300	Magnetic	23	L-15
DTL-CC000100	Spanner	23	L-9
DWS-AA000600	Washer For H-15	18	H-17
DWS-AA000600	Washer For L-22, 23	23	L-28
DWS-AA001100	Washer For E-5	15	E-7
DWS-AA001500	Washer For D-35	11	D-39
DWS-AA002900	Washer For L-22, 23	23	L-26
DWS-AA003800	Washer	7	A-14-4

Parts No.	Name of Parts	Page	Ref.No.
DWS-AA003800	Washer For G-13	17	G-14
DWS-AA005100	Washer For E-11	15	E-13
DWS-AA005200	Washer For E-20	15	E-21
DWS-AA011800	Washer For J-8-1	20	J-8-2
DWS-AA014400	Washer For F-24	16	F-26
DWS-AA014400	Washer For J-7-4, J-7-5	20	J-7-7
DWS-CA000100	Washer For C-35	9	C-36
DWS-CA000100	Washer	15	E-27-1
DWS-CB000200	Washer For D-78	13	D-108
HEC-2507	Auto Knee Lifter Solenoid Ass'y	20	J-7-1
KM-2507	Auto Knee Lifter Solenoid Ass'y	20	J-7
PBR-BA001200	Needle Bearing	15	E-14
PBR-BA004000	Needle Bearing	16	F-8
PPK-AA000100	Oil Seal For B-20,21	8	B-22
PPK-AD000100	Oil Seal For J-7-12	20	J-7-13
PPK-BA000400	O-Ring For B-2	8	B-3
PPK-BA000400	Screw for B-34-1	8	B-34-3
PPK-BA000400	O-Ring For G-16	17	G-17
PPK-BA000700	O-Ring For D-78	13	D-79
PPK-BA000800	O-Ring For D-63	11	D-64
PPK-BA001600	O-Ring For D-88	13	D-89
PPK-BB000100	O-Ring For K-1	21	K-2
PPN-AD000100	Pin	7	A-45
PPN-AF000900	Pin For K-9-8	21	K-9-10
PSC-AC000600	Screw(M6)	15	E-19
PSC-AC001200	Screw(M6)	13	D-99
PSC-AC001200	Screw(M6)	24	M-6-26
PSC-AC002600	Screw(M8×1.25)	7	A-22
PSC-BA000100	Screw(M3×0.5)	18	H-28
PSC-CB000200	Screw(M4)	18	H-9
PSC-D000100	Nail For L-24	23	L-29
PSN-AA000500	Nut(M8×1.25)	7	A-24
PSN-AA001700	Hinge Nut For D-104	13	D-103
PSN-AA001700	Nut For Cable Connection Bolt "B"	17	G-41
PSR-AA000200	Stop-Ring For E-11	15	E-12
PSR-AA000400	Stop Ring "C" For C-1, 3	11	D-4
PSR-AC000100	E-Ring(φ9)	15	E-22
PSR-AC000100	E-Ring(φ9)	19	I-6
PSR-AC000100	E-Ring(φ9)	23	L-38
PSR-AC000200	E-Ring(φ5)	11	D-24
PSR-AC000200	E-Ring(φ5)	13	D-73
PSR-AC000200	E-Ring(φ5)	15	E-51
PSR-AC000200	E-Ring(φ5)	17	G-20
PSR-AC000200	E-Ring(φ5)	18	H-4
PSR-AC000400	E-Ring(φ3)	17	G-34
PSR-AC000500	E-Ring(φ6)	15	E-62
PTC-AG000100	Nylon Clip	7	A-30
PTC-AH000200	Cable Holder(7N)	7	A-28
PTL-AB000100	L-Wrench(2mm)	23	L-10
PTL-BA000100	Driver(Large)	23	L-2
PTL-BA000200	Driver(Middle, Small)	23	L-3
PWS-AA000500	Washer For H-27	18	H-30
PWS-CA000100	Spring Washer For H-27	18	H-29
PWS-CA000200	Washer For K-9-1	21	K-9-2
PWS-CA000400	Spring Washer For A-21	7	A-23
PWS-CA000500	Washer For Synchronizer	13	D-98
PWS-CA000500	Washer For E-53	15	E-54
PWS-CA000500	Washer For Synchronizer	24	M-6-27
	Synchronizer Ass'y	8	B-34
	Needle	16	F-39
	Needle	16	F-40

