



SunStar CO., LTD.

HEAD OFFICE

178-212, GAJWA-DONG, SEO-KU, INCHON, KOREA
TEL : (032) 580-5600 ~ 4 FAX : (032) 584-3020

TRADE OFFICE

178-212, GAJWA-DONG, SEO-KU, INCHON, KOREA
TEL : (032) 580-5740 ~ 60 FAX : (032) 584-3025 ~ 6

OVERSEAS NETWORK

SUNSTAR MACHINERY U.S.A., INC.

11475, N.W. 39TH ST. Miami, Florida 33178, USA
TEL : 1-305-591-9596 FAX : 1-305-591-0661

SUNSTAR MACHINERY HONGKONG LTD.

RM. 1302, Apec Plaza, No. 49 Hoi Yuen RD,
Kwun Tong, Kln. H. K.
TEL : 852-2729-7078, 852-2729-7224 FAX : 852-2729-7573

SUNSTAR MACHINERY SHANG HAI LTD. (CHINA)

#7 Yuangong Rd. Shanghai International Automobiles City
Components Sub-Assembly Industrial Zone Jiading Shaghai China
TEL : 86-21-69576305, 69576306 FAX : 86-21-69576091, 69576093

SUNSTAR MACHINERY GUANG DONG BRANCH (CHINA)

Luosha Daxia 12TH Floor 170 Dong Xing-Road, Dong Guan
Shicheng Qu, Guang Dong, China
TEL : 86-769-249-1610 FAX : 86-769-234-4042

SUNSTAR MACHINERY FUJIAN BRANCH (CHINA)

504, Agricultural Bank Building Shishi Fujian, China
TEL : 86-595-859-8871 FAX : 86-595-859-8872

SUNSTAR MACHINERY QINGDAO BRANCH (CHINA)

Chengyangqu Liutingzhen Chongyanglu Shoufeizhan
Beiduan Shangpinlou Qingdao Shandong, China
TEL : 86-532-482-2236, 86-532-481-1262 FAX : 86-532-481-1262

SUNSTAR MACHINERY JAKARTA BRANCH

JL. Pelepah Indah Raya Bloc LC 2/2 Kelapa Gading Permai
Jakarta(14250) Indonesia
TEL : 62-21-450-2143, 62-21-4584-0752 FAX : 62-21-4584-0214

SUNSTAR MACHINERY HOCHIMINH BRANCH (VIETNAM)

#E23 Nguyen Thai Binh ST. W. 12 Tan Binh District,
Hochiminh City, Vietnam
TEL : 84-8-811-4141 FAX : 84-8-811-4588

SUNSTAR MACHINERY HANOI BRANCH (VIETNAM)

19 Son Tay. W. Dien Bien Ba Dinh Dist., Hanoi, Vietnam
TEL : 84-4-734-0268 FAX : 84-4-734-0278

WEB-SITE

<http://www.sunstar.co.kr>

E-MAIL

sunstar@sunstar.co.kr
swf@sunstar.co.kr
fortuna@sunstar.co.kr

PARTS BOOK

KM-560

Single-Needle Unison Feed
Lock Stitch Machine

KM-560-7

Single-Needle Unison Feed
Lock Stitch Machine With Thread Trimmer



INFORMATION

A. Parts Book 구성 Structure of Part Book

① **A** Machine Body Mechanism
두부 및 외장 관계

④ ⑤ ⑥ ⑦ ⑧ ⑨

No.	Parts No.	Note.	Name of Parts	품 명	Q'ty BS BB	Assembly No.
A-52	41802S-300H		Bobbin Winder Lever	실감기 레버	1	1
A-53	41801S-300H		Bobbin Winder Adjusting Plate	실감기 조절판	1	1
A-54	SC-6130-1230		Screw(1.6" n=40)	볼트(실감기)	1	1
A-55	02-011W-230Z		Washer	와셔	1	1
A-56	41802S-300H		Bobbin Winder Lever Shaft	실감기 레버 축	1	1
A-57	41804S-300H		Bobbin Winder Adjusting Cam	실감기 조절 캠	1	1
A-58	03025C-4113		Screw(M4*PN3)	볼트(실감기)	1	1
A-59	04-006C-2310		E-Ring(#5)	E-링(실감기)	2	2
A-60	41802S-300H		Bobbin Winder Action Plate	실감기 작동판	1	1
A-61	41-058A-120H		Bobbin Winder Action Body	실감기 작동체	1	1
A-62	40-007W-1000		Washer	와셔	2	2
A-63	41802S-300H		Bobbin Winder Spring	실감기 탄압 스프링	1	1
A-64	41802S-300H		Bobbin Stopper	보빈 스톱퍼	1	1
A-65	41802S-300H		Screw	볼트(실감기)	5	5
A-66	41802S-300H		Bobbin Stand	보빈 스탠드	1	1
A-67	41802S-300H		Bobbin Winder Mn	실감기 메스	1	1
A-68	SC-609-230Z		Screw(1.6" n=40)	고장체스 실감기 조절나사	2	2
A-69	41802S-300H		Thread Tension Adjusting Ass'y	실감기 실감력 조절장치(조)	1Set	1Set
A-70	41802S-300H		Thread Tension Adjusting Shaft	실감력 실감력 조절 축	1	1
A-71	41802S-300H		Thread Guide Plate	실감나사 받침	1	1
A-72	40-204A-1230		Thread Tension Disk	실감력 조절 디스크	2	2
A-73	40-330G-123A		Thread Tension Spring	실감력 조절 스프링	1	1
A-74	40-800W-1230		Thread Tension Spring Stopper	실감력 조절 스프링 스톱퍼	1	1
A-75	40-024A-1230		Spring Cover	스프링 커버	1	1
A-76	40-204A-2250		Thread Tension Nut	실감력 조절 너트	1	1
A-77	SN-0131-1400		Nut(15/16" n=20)	실감력 조절 축 너트	1	1
A-78	01804S-300H		Safety Plate Ass'y	안전판(조)	1Set	1Set
A-79	01804S-300H		Safety Plate	안전판	1	1
A-80	01804S-300H		Safety Plate Bracket	안전판 브라켓	1	1
A-81	01804S-300H		Safety Plate Holder	안전판 홀더	1	1
A-82	01804S-300H		Safety Plate Hinge Screw	안전판 힌지나사	1	1
A-83	SN-0101-1400		Nut(3/16" n=20)	니트	3	3
A-84	40-007W-1000		Washer	와셔	1	1
A-85	01804S-300H		Safety Plate Spring	안전판 스프링	1	1
A-86	01804S-300H		Safety Plate Spring Hook	안전판 스프링 걸이	1	1
A-87	SN-0111-1600		Nut(3/16" n=20)	니트	1	1
A-88	GP-01225E-02		Bolt Cover	볼트커버	1	1
A-89	SC-946E-1230		Screw(11/16" n=40)	볼트(실감기)	7	7
A-90	GP-01225A-00		X-Driving Motor Cover	제 구동 모터 커버	1	1
A-91	GP-012217-00		Side Cover	옆뚜껑	1	1
A-92	GP-012215-00		Side Cover Gasket	옆뚜껑 가스켓	1	1

- ① 관계 별 고유 코드
Unique code by mechanism
- ② 관계 별 고유 명칭
Unique name by mechanism
- ③ 관계도
Explode view
- ④ Ref. No. : 파트별 고유 식별 번호
Unique identification number by part
- ⑤ Parts No. : 고유 제품 코드
Unique Product code

- ⑥ Note. : 공지사항 표기 및 메모
Refers to notice and memo
- ⑦ 품명 : 파트의 고유 품명
Name of Part : Unique name of parts
- ⑧ Q'ty : 파트의 수량
The numer of parts
- ⑨ Assembly no. : 조(組) 파트의 식별 번호
Unique identification number by set part

Ex)







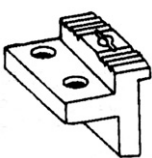
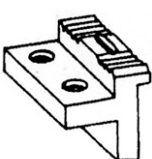
구분 Category	Code	비고 Category
구 부품 Old part	01-030C-1230	
신 부품 New part	AS-000000-00	조(組)파트 Set parts
	GP-000000-00	기구적 파트 Instrumental parts
	EP-000000-00	전기적 파트 Electrical parts

WARNING

1. 조에 속한 파트는 개별 조립 시 제품의 파손 또는 재봉 불량 발생될 수 있어 해당 파트에 대한 주문 시에는 조 품목으로만 구입이 가능합니다.
2. 본 책자는 Part Book으로 제작되었으므로 매뉴얼로 사용 불가합니다.
3. 사전 예고 없이 사양이 변경 될 수도 있습니다.

1. The parts classified as ass'y items may cause damage to the machine or bad sewing when they are separately assembled. Hence, when they are ordered, they can be purchased as ass'y items only.
2. This is a parts book. It cannot be used as a manual.
3. Parts are Subject to change in Design Without Prior Notice.

KM-560 — **SPECIAL ORDER PARTS**
KM-560-7 —

Ref. No.	Pt. No.	Code. No.	Sub-Class Name of Parts	A-Type		B-Type		C-Type		D-Type			
				A-1	A-2	B-1	B-2	C-1	C-2	D-1	D-2		
F-23	15-21A	CGA-GC007400	Upper Feed Presser Foot		*	*							
	15-21B	CGA-GC005900					*	*					
	15-21C	CGA-GC005800							*	*			
	15-21D	CGA-GC006100									*	*	
C-7	5-7A	CGA-GC007500	Sub-Presser Foot		*	*							
	5-7B	CGA-GC002900					*	*	*	*	*	*	*
D-64	6-87A	CGA-GB002300	Feed Dog		*	*	*	*	*	*			
	6-87B	CGA-GB004200										*	*
A-24	1-30	CGA-GA004900	Needle Plate		*	*		*		*			
A-25	1-31	CGA-GA005000				*	*		*		*		*

*NOTE: □-1:THREAD TRIMMER PARTS. □-2:STANDARD PARTS

CONTENTS

목 차

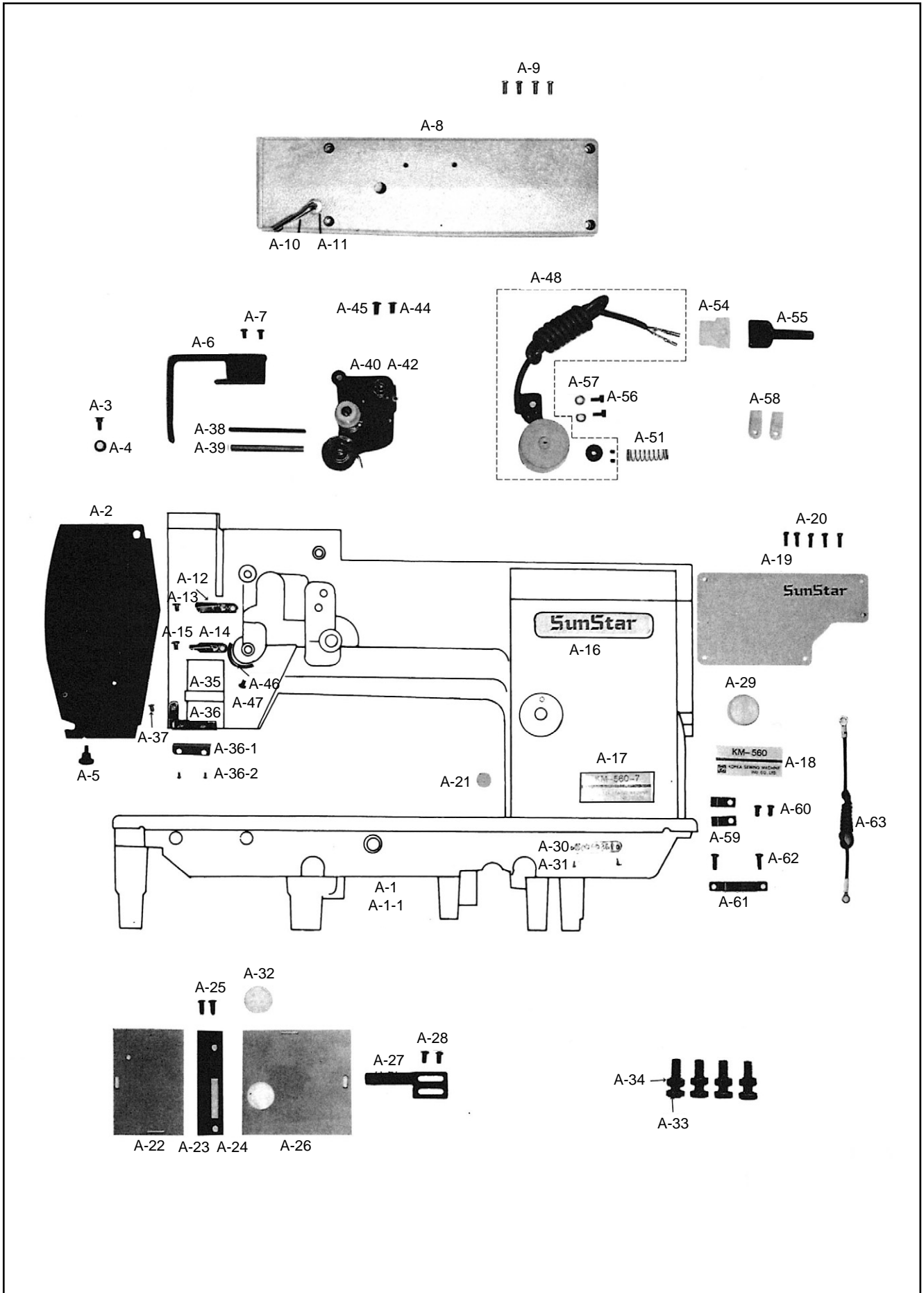
A	Machine Body & Thread Tension Adjusting Mechanism 외장 및 실 조절 관계.....	6
B	Upper Shaft & Needle Bar Rock Mechanism 상축 및 바늘대 관계	8
C	Presser Foot & Knee Lifting Mechanism 노루발 및 무릎 올림 관계.....	10
D	Feed Mechanism 피이드 관계	12
E	Lower Shaft & Rotary Hook Mechanism 하축 및 로타리 훅 관계	16
F	Upper Feed Mechanism 상피이드 관계.....	18
G	Thread Trimmer Mechanism 사절 관계.....	20
H	Lubrication 금유관계	22
I	Reverse Button Mechanism 역진 버튼 관계	23
J	Synchronizer Mechanism 싱크로나이저 관계.....	24
K	Program Unit Box & Presser Foot Lifting Solenoid Mechanism 프로그램 유닛 및 노루발 올림 장치 관계.....	25
L	Accessories 액세서리	26
	* INDEX	28

NOTE : Parts are Subject to change in Design Without Prior Notice.

1. 조에 속한 파트는 개별 조립 시 제품의 파손 또는 재봉 불량 발생될 수 있어 해당 파트에 대한 주문 시에는 조 품목으로만 구입이 가능합니다.
 2. 본 책자는 Parts Book으로 제작되었으므로 매뉴얼로 사용 불가합니다.
- 1. The parts classified as ass'y items may cause damage to the machine or bad sewing when they are separately assembled. Hence, when they are ordered, they can be purchased as ass'y items only.**
- 2. This is a parts book. It cannot be used as a manual.**

A

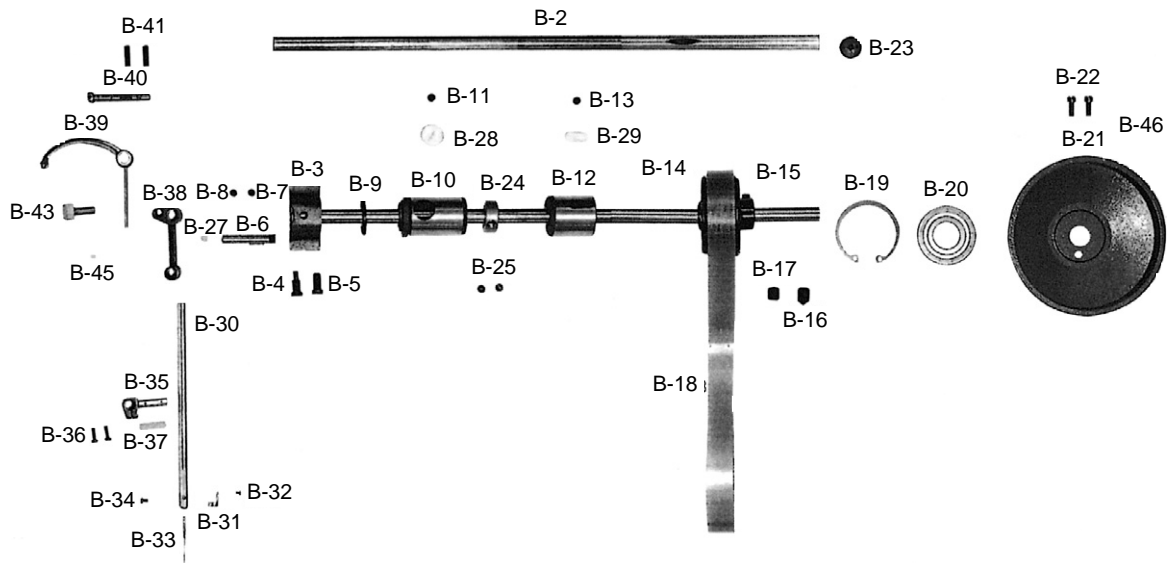
Machine Body & Thread Tension Adjusting Mechanism 외장 및 실장력 조절 관계



Ref. No.	Parts No.	Name of Parts	품 명	Q' ty		Applied Period
				KM-560-7	KM-560	
A-1	01-001A-5607	Arm. Bed	아암베드 (조)	1Set		
A-1-1	01-001A-5600	Arm. Bed	아암베드 (조)		1Set	
A-2	CMB-LB008100	Face Plate	면판	1	1	
A-3	DSC-FA017200	Screw (Upper) For A-2	면판 점나사 (상)	1	1	
A-4	DWS-CB000600	Washer (Upper) For A-2	면판 와셔	1	1	
A-5	DSC-BJ002300	Screw (9/64" n=40)	홈볼이 동근납작 작은나사 (9/64" n=40)	1	1	
A-6	CMB-LA020100	Thread Take Up Cover	실채기 커버	1	1	
A-7	DSC-BJ001100	Screw (9/64" n=40)	홈볼이 동근납작 작은나사 (9/64" n=40)	2	2	
A-8	CMB-LA020300	Top Cover	윗뚜껑	1	1	
A-9	DSC-BJ000400	Screw (11/64" n=40)	홈볼이 동근납작 작은나사 (11/64" n=40)	4	4	
A-10	CMB-HK002700	Top Cover Thread Guide	윗실 걸이	1	1	
A-11	DSN-AA000700	Nut (15/64" n=28)	육각 너트 (15/64" n=28)	1	1	
A-12	CMB-HK005300	Arm Thread Guide Plate (U)	실걸이 (상)	1	1	
A-13	DSC-BC000200	Screw (9/64" n=40)	홈볼이 동근접시 작은나사 (9/64" n=40)	1	1	
A-14	CMB-HK007500	Arm Thread Guide Plate (L)	실걸이 (하)	1	1	
A-15	DSC-BC000200	Screw (9/64" n=40)	홈볼이 동근접시 작은나사 (9/64" n=40)	1	1	
A-16	CMB-LD004200	Brand Mark	상표마크 (암부)	1	1	
A-17	CMB-LD004000	Model Mark	모델 마크	1		
A-18	CMB-LD004100	Model Mark	모델 마크		1	
A-19	CMB-LA020400	Back Cover Plate	뒷뚜껑	1	1	
A-20	DSC-BJ001400	Screw (9/64" n=40)	홈볼이 동근납작 작은나사 (9/64" n=40)	5	5	
A-21	DPK-CA002600	Rubber Cap (S)	피트 조절기 구멍마개	1	1	
A-22	CMB-GH000900	Slide Plate (L)	미끄럼판 (左)	1	1	
A-23	CGA-GA004900	Needle Plate	침판	1		
A-24	CGA-GA005000	Needle Plate	침판		1	
A-25	DSC-BB001800	Screw (11/64" n=40)	홈볼이 접시 작은나사 (11/64" n=40)	2	2	
A-26	CMB-GH001000	Slide Plate (R)	미끄럼판 (右)	1	1	
A-27	CMB-BJ004600	Stopper For Slide Plate (R)	미끄럼판 (右) 스토퍼	1	1	
A-28	DSC-BJ000200	Screw (11/64" n=40)	홈볼이 납작 작은나사 (11/64" n=40)	2	2	
A-29	DPK-CA000600	Rubber Cap (L)	하측 후 붓싱 고무마개	1	1	
A-30	CMB-BJ006600	Machine Number Plate	번호판	1	1	
A-31	PPN-AD000100	Pin For A-30	번호판 핀	2	2	
A-32	CMB-BJ004800	Bobbin Window	미끄럼판 보빈창	1	1	
A-33	DSC-AA003500	Screw (M8×1.25)	육각 보울트 (M8×1.25)	4	4	
A-34	PSN-AA002200	Nut For A-33	베드받침 너트	4	4	
A-35	CLB-JL006500	Felt (Upper Thread)	윗실 섬유 헬트	1	1	
A-36	CMB-HK005500	Felt Holder For Upper Thread Supply	암 실안내(하)	1	1	
A-36-1	CLB-BG003800	Felt For Upper Thread Supply	윗실 섬유 헬트잡이	1	1	
A-36-2	DSC-BJ001600	Screw (3/32" n=56)	홈볼이 동근납작 작은나사 (3/32" n=56)	2	2	
A-37	DSC-BC000200	Screw (9/64" n=40)	홈볼이 동근접시 작은나사 (9/64" n=40)	1	1	
A-38	CTR-KC000600	Thread Tension Release	실늘추기 축	1	1	
A-39	CTR-BQ000300	Pipe For A-38	동 파이프	1	1	
A-40	ATA-PS004600	Thread Tension Control Ass'y (T)	실조절 장치(조)	1Set		
A-42	ATA-PS004700	Thread Tension Control Ass'y (S)	실조절 장치(조)		1Set	
A-44	DSC-BJ000200	Screw (11/64" n=40)	홈볼이 납작 작은나사 (11/64" n=40)	1	1	
A-45	DSC-BJ000400	Screw (9/64" n=40)	홈볼이 뾰비 작은나사 (9/64" n=40)	1	1	
A-46	CTA-BJ001900	Stopper For Thread Take-Up Spring	실조절 장치 스토퍼	1	1	
A-47	DSC-BJ001100	Screw (9/64" n=40)	홈볼이 동근납작 작은나사 (9/64" n=40)	1	1	
A-48	DSD-AA003400	Tension Release Solenoid Ass'y	실 늘추기 솔레노이드 (조)	1Set		
A-51	DSP-AA011200	Spring For A-49	솔레노이드 축 카라 스프링	1		
A-54	08-010B-3701	Plug For A-48	플러그 1490P1 (백색)	1		
A-55	17-436C-7907	Tube For A-48	사각 튜브 (小)	1		
A-56	PSC-AC006100	Screw (M5×0.8)	육각구멍볼이 보울트 (M5×0.8)	2		
A-57	CMB-LA020100	Washer For A-56	가마잡이 와셔	2		
A-58	PTC-AH000300	Cable Holder (5N)	케이블 잡이 C (5N)	2		
A-59	DTC-AH001000	Cable Holder	케이블 잡이	2		
A-60	DSC-BJ000200	Screw (11/64" n=40)	홈볼이 납작 작은나사 (11/64" n=40)	2		
A-61	01-047C-5607	Code Holder	코드 잡이	1		
A-62	DSC-BJ001400	Screw (9/64" n=40)	홈볼이 동근납작 작은나사 (9/64" n=40)	2		
A-63	12-016M-2350	Earth Line	어스선 (조)	1		

B

Upper Shaft & Needle Bar Rock Mechanism 상축 및 바늘대 관계

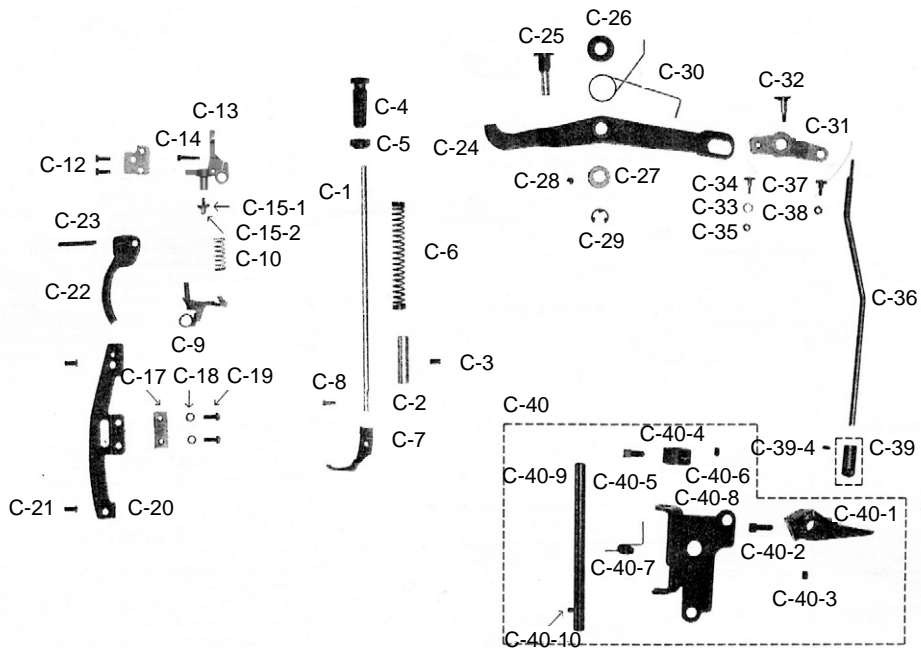


Ref. No.	Parts No.	Name of Parts	품 명	Q' ty		Assembly No.
				KM-560-7	KM-560	
B-2	CUS-KC002900	Upper Shaft	상축	1	1	
B-3	CUS-DA002800	Link Cam	링크 캠	1	1	
B-4	DSC-BF003700	Screw (9/32"n=28)	홈볼이 납작 작은나사 (9/32"n=28)	1	1	
B-5	DSC-BF011500	Screw (9/32"n=28)	홈볼이 납작 작은나사 (9/32"n=28)	1	1	
B-6	DPN-AA008801	Needle Bar Crank Shaft	링크캠 핀	1	1	
B-7	DSC-CB000400	Screw (1/4"n=40)	육각구멍볼이 멈춤나사 (1/4"n=40)	1	1	
B-8	DSC-CB001000	Screw (1/4"n=40)	홈볼이 멈춤나사 (1/4"n=40)	1	1	
B-9	DCL-BB002400	Thrust Ring	상축 앞 붓싱 링	1	1	
B-10	DBS-DB008500	Upper Shaft Bushing (F)	상축 전붓싱	1	1	
B-11	DSC-CA000800	Screw (15/64"n=28)	홈볼이 멈춤나사 (15/64"n=28)	1	1	
B-12	DBS-DA028400	Upper Shaft Bushing (M)	상축 중붓싱	1	1	
B-13	DSC-CA000800	Screw (15/64"n=28)	홈볼이 멈춤나사 (15/64"n=28)	1	1	
B-14	DPL-BB000500	Timing Belt Pulley (Upper)	타이밍 풀리 (上)	1	1	
B-15	DSR-AK000500	Timing Belt Pulley Ring	후렌치	2	2	
B-16	DSC-CB001800	Screw (1/4"n=40)	육각구멍볼이 멈춤나사 (1/4"n=40)	1	1	
B-17	DSC-CB000400	Screw (1/4"n=40)	육각구멍볼이 멈춤나사 (1/4"n=40)	1	1	
B-18	PBT-BB000200	Timing Belt	타이밍 벨트	1	1	
B-19	PSR-AB000200	Stopper Ring	베어링 스톱링 (47)	1	1	
B-20	PBR-AA008500	Bearing (6204 ZZ)	6204 베어링	1	1	
B-21	DPL-AA001400	Pulley	풀리	1	1	
B-22	DSC-BF000800	Screw (15/64"n=28)	홈볼이 납작 작은나사 (15/64"n=28)	2	2	
B-23	DSC-BG000200	Screw (5/16"n=24)	홈볼이 바인딩 작은나사 (5/16"n=24)	1	1	
B-24	DCL-AA008500	Upper Shaft Collar	상축 카라	1	1	
B-25	DSC-CA000500	Screw (1/4"n=40)	홈볼이 멈춤나사 (1/4"n=40)	2	2	
B-27	CLB-JL000800	Oil Cap For B-6	실채기 잠이 유심마개	1	1	
B-28	CLB-JL006600	Felt (B) For B-10	상축 앞 붓싱 헬트	1	1	
B-29	CLB-JL009500	Felt For B-12	상축 중 붓싱 헬트	1	1	
B-30	CNB-KA002000	Needle Bar	바늘대	1	1	
B-31	CNB-HK001500	Needle Bar Thread Guide	바늘대 실안내	1	1	
B-32	DSC-BJ002200	Screw (3/32"n=56)	홈볼이 바인딩 작은나사 (3/32"n=56)	1	1	
B-33		Needle	바늘	1	1	
B-34	DSC-BJ004300	Screw (9/64"n=40)	홈볼이 둥근납작 작은나사 (9/64"n=40)	1	1	
B-35	CNB-BF001800	Needle Bar Clamp	바늘대 잠이	1	1	
B-36	DSC-BJ000300	Screw (9/64"n=40)	홈볼이 둥근납작 작은나사 (9/64"n=40)	2	2	
B-37	CLB-JL000800	Wick For B-35	절환기 헬트	1	1	
B-38	CTH-CC001400	Needle Bar Crank	바늘대 크랭크	1	1	
B-39	CTH-HJ002000	Thread Take-Up Lever	실채기	1	1	
B-40	DPN-AA013200	Hinge Pin For B-39	실채기 핀	1	1	
B-41	DSC-CA001500	Screw (15/64"n=28)	홈볼이 멈춤나사 (15/64"n=28)	2	2	
B-43	CTH-BF000300	Take Up Lever Holder	실채기 잠이	1	1	
B-45	CLB-JL000800	Oil Cap For B-43	실채기잠이 유심 마개	1	1	



Presser Foot & Knee Lifting Mechanism

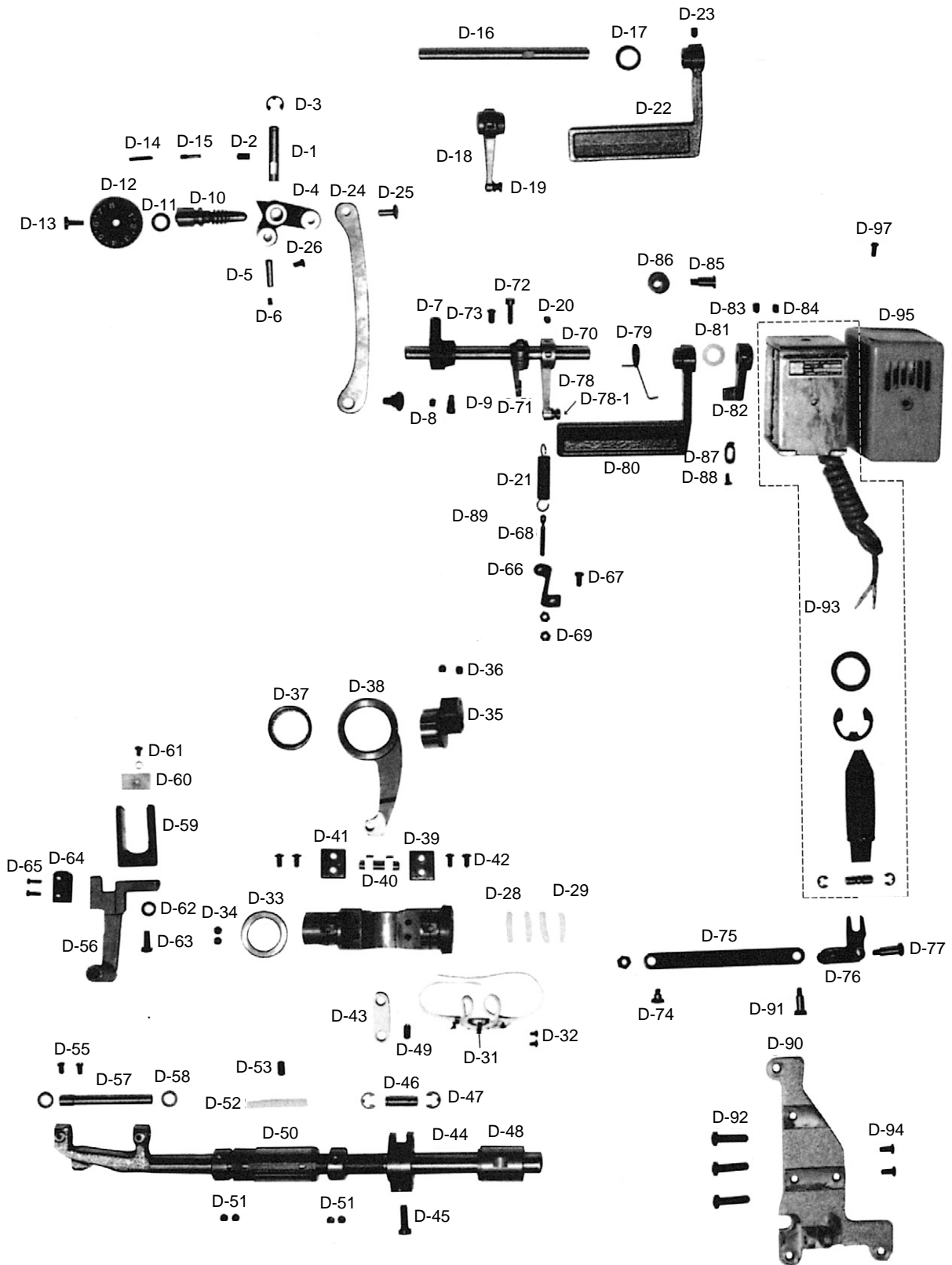
노루발 및 무릎 올림 관계



Ref. No.	Parts No.	Name of Parts	품 명	Q' ty		Assembly No.
				KM-560-7	KM-560	
C-1	CPB-KB000901	Presser Bar	누름대	1	1	
C-2	D BS-DA022400	Presser Bar Bushing	누름대 붓싱	1	1	
C-3	D SC-CA000800	Screw (15/64" n=28)	홈볼이 멈춤나사 (15/64" n=28)	1	1	
C-4	D SC-HA000500	Screw (9/16" n=20)	홈볼이 납작 작은나사 (9/16" n=20)	1	1	
C-5	DSN-CC000600	Nut (9/16" n=20)	원형 너트 (9/16" n=20)	1	1	
C-6	DSP-AA011400	Spring For C-4	압력 조절 스프링	1	1	
C-7	CGA-GC002900	Sub Presser Foot	보조 노루발 (B)	1	1	
C-8	D SC-BF003800	Screw (9/64" n=40)	홈볼이 납작 작은나사 (9/64" n=40)	1	1	
C-9	CTR-BJ001700	Thread Tension Release (Ass'y)	실 늦추기 (조)	1Set	1Set	
C-10	DSP-AA009500	Return Spring For C-9	실 늦추기 리턴 스프링	1	1	
C-11	CTR-BA000200	Tension Release Base	실 늦추기 판(K2541)	1	1	
C-12	D SC-BF001000	Screw (11/64" n=40)	홈볼이 납작 작은나사 (11/64" n=40)	2	2	
C-13	CPB-BB000900	Presser Bar Guide Bracket	누름대 브라켓	1	1	
C-14	D SC-BA001600	Screw (3/16" n=32)	홈볼이 냄비 작은나사 (3/16" n=32)	1	1	
C-15-1	D SC-FG002000	Roller Stud Screw	누름대 브라켓 축 나사	1	1	
C-15-2	CPB-CL000500	Roller For Presser Bracket	누름대 브라켓 로울러	1	1	
C-17	CPB-BK000400	Guide Bar Bracket Roller	누름대 브라켓 로울러 안내	1	1	
C-18	D WS-AA001100	Washer For C-17	뿔뚜껑 쥘 와셔	2	2	
C-19	D SC-BF001000	Screw (11/64" n=40)	홈볼이 납작 작은나사 (11/64" n=40)	2	2	
C-20	CPB-BJ001500	Plate for Roller Guide	로울러 안내 부착판	1	1	
C-21	D SC-BC001100	Screw (3/16" n=28)	홈볼이 둥근접시 작은나사 (3/16" n=28)	2	2	
C-22	CPB-CM000900	Presser Bar Lifter	누름대 올리기	1	1	
C-23	D SC-HB002300	Hinge Pin For C-22	누름대 올리기 힌지나사	1	1	
C-24	APM-PS001300	Knee Lifting Lever Ass'y	무릎올림 레버 (조)	1	1	
C-25	D SC-FH001100	Stud Screw For C-24	무릎올림 레버 단나사	1	1	
C-26	D WS-AA017000	Washer For C-24	무릎올림 레버 와셔	1	1	
C-27	D CL-AA008600	Collar For C-24	무릎올림 레버 카라	1	1	
C-28	D SC-CB000400	Screw (1/4" n=40)	육각구멍볼이 멈춤나사 (1/4" n=40)	1	1	
C-29	PSR-AC000600	E-Ring (Ø8)	실 늦추기 안내붓싱 E링 (Ø8)	1	1	
C-30	CPM-CA002000	Knee Lifter Lever Spring	무릎올림 레버 스프링	1	1	
C-31	CPM-CA002000	Knee Lifter Link	무릎올림 링크	1	1	
C-32	D SC-FA019500	Stud Screw For C-31	무릎올림 링크 단나사	1	1	
C-33	CPM-CL000900	Roller For Knee Lifter Link	무릎올림 링크 로울러	1	1	
C-34	D SC-FA019600	Stud Screw For Knee Lifter Roller	무릎올림 링크 로울러 단나사	1	1	
C-35	DSN-AA000900	Nut (11/64" n=40)	육각너트 (11/64" n=40)	1	1	
C-36	CPM-BH001000	Knee Lifter Rod	무릎올림 연결로드	1	1	
C-37	D SC-FA019700	Stud For Knee Lifter Connecting Rod	무릎올림 연결로드 단나사	1	1	
C-38	DSN-AA000600	Nut (3/16" n=32)	육각너트 (3/16" n=32)	1	1	
C-39	APM-PS001400	Roller Ass'y For Knee Rod	무릎올림봉 로울러 (조)	1	1	
C-39-4	D SC-CA001600	Screw (11/64" n=40)	홈볼이 멈춤나사 (11/64" n=40)	1	1	
C-40	90-001A-5607	Knee Lifter Ass'y	무릎올림 (조)	1	1	
C-40-1	CST-CM000200	Knee Lifter Lock Bar Lever	무릎올림 고정레버	1	1	
C-40-2	D SC-GF000100	Screw (A) For C-40-1	무릎올림 레버 고정나사	1	1	
C-40-3	43-027S-8130	Screw (B) For C-40-1	무릎올림 레버 고정나사 (소)	1	1	
C-40-4	D CL-AA008700	Lever Shaft Stopper Collar	레버축 스톱퍼 카라	1	1	
C-40-5	PSC-AA000200	Screw (M6×1.0)	육각볼트 (M6×1.0)	1	1	
C-40-6	43-027S-8130	Screw (B) For C-40-4	무릎올림 레버 고정나사 (소)	1	1	
C-40-7	DSP-AC006700	Return Spring For C-40-9	레버축 리턴 스프링	1	1	
C-40-8	CST-BB004300	Lever Shaft Bracket	레버축 브라켓	1	1	
C-40-9	CST-KC001400	Knee Lifting Rock Bracket Shaft	무릎올림봉 받침레버 축	1	1	
C-40-10	DPN-BC005100	Lever Shaft Guide Pin	안내핀	1	1	

D

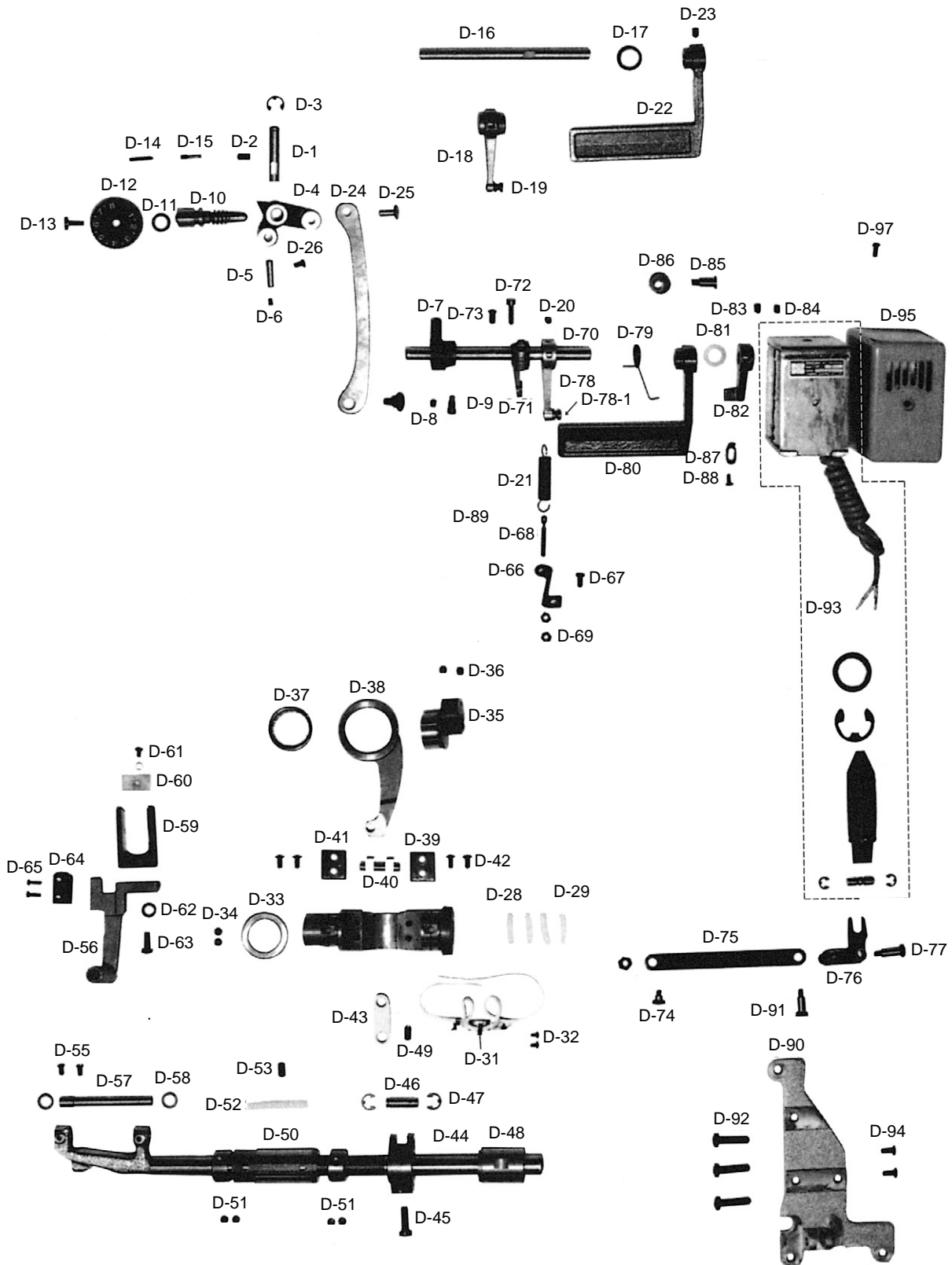
Feed Mechanism 피이드 관계



Ref. No.	Parts No.	Name of Parts	품 명	Q' ty		Applied Period
				KM-560-7	KM-560	
D-1	DPN-AA015000	Feed Regulator stud	피이드 조절기 힌지핀	1	1	
D-2	DSC-CB000900	Screw (15/64"n=28)	육각구멍볼이 멈춤나사 (15/64"n=28)	1	1	
D-3	PSR-AC000900	E-Ring (Ø7)	피이드 조절기 힌지핀 E링 (Ø7)	1	1	
D-4	CFA-DF000900	Feed Regulator	피이드 조절기 (K2554)	1	1	
D-5	DPN-AA015100	Connecting Pin For D-4	피이드 조절기 연결핀	1	1	
D-6	DSC-CA001600	Screw (11/64"n=40)	홈볼이 멈춤나사 (11/64"n=40)	1	1	
D-7	CFA-BB001400	Feed Regulator Bracket	피이드 조절기 브라켓 (K2545)	1	1	
D-8	DSC-CB000500	Screw (15/64"n=28)	육각구멍볼이 멈춤나사 (15/64"n=28)	1	1	
D-9	DSC-AC002700	Screw (1/4"n=40)	육각구멍볼이 멈춤나사 (1/4"n=40)	1	1	
D-10	CFA-KJ001300	Feed Regulator Control Screw	피이드 조절 다이얼 축	1	1	
D-11	PPK-BA001600	O-Ring For D-10	다이얼 축 오링	1	1	
D-12	CFA-CQ002300	Feed Regulator Control Plate	다이얼 판	1	1	
D-13	DSC-BF001900	Screw (3/16"n=28)	홈볼이 납작 작은나사 (3/16"n=28)	1	1	
D-14	DPN-AA008700	Pin For D-12	다이얼 핀	1	1	
D-15	DSP-AA006400	Spring For D-12	다이얼 스프링	1	1	
D-16	CFA-KC001100	Feed Regulator Lever Shaft	역진레버 축		1	
D-17	DWS-AA013300	Washer For D-22	레버 와셔		1	
D-18	AFA-PS000900	Spring Holder For D-21	역진레버 축 스프링걸이		1	
D-19	DPN-BA000900	Hook For D-18	레버 축 스프링 걸이 핀		1	
D-20	DSC-CB000500	Screw (15/64"n=28)	육각구멍볼이 멈춤나사 (15/64"n=28)	1	1	
D-21	DSP-AB005000	Return Spring For Reverse Feed Lever	레버 스프링	1	1	
D-22	CFA-CM002100	Reverse Feed Control Lever	역진레버		1	
D-23	DSC-CB001800	Screw (1/4"n=40)	육각구멍볼이 멈춤나사 (1/4"n=40)		1	
D-24	CLF-CC002100	Feed Regulator Connecting Rod	절환기 연결 로드 (4.5T)	1	1	
D-25	DPN-AD002400	Pin For D-24	절환기 연결 로드 핀 (B)	1	1	
D-26	DSC-BJ000200	Screw (11/64"n=40)	홈볼이 납작 작은나사 (11/64"n=40)	1	1	
D-27	DSC-FA020200	Stud Screw For D-24	절환기 연결 로드 단나사	1	1	
D-28	CLF-KK000500	Feed Regulator Shaft	절환기	1	1	
D-29	CLB-JL000800	Felt For D-28	절환기 felt	5	5	
D-31	CLB-BG004200	Wick Holder	절환기 유심잡이	1	1	
D-32	DSC-BJ004600	Screw (1/8"n=44)	홈볼이 둥근납작 작은나사 (1/8"n=44)	2	2	
D-33	DCL-AA005400	Stopper Collar For D-28	절환기 스톱퍼 카라	1	1	
D-34	DSC-CB000500	Screw (15/64"n=28)	육각구멍볼이 멈춤나사 (15/64"n=28)	2	2	
D-35	CLF-DC002500	Feed Eccentric Cam	피이드 캠	1	1	
D-36	DSC-CB000500	Screw (15/64"n=28)	육각구멍볼이 멈춤나사 (15/64"n=28)	2	2	
D-37	PBR-BA002800	Needle Bearing	니들 베어링	1	1	
D-38	CLF-CC002000	Feed Cam Connecting Rod	베어링 로드	1	1	
D-39	DPN-AA015200	Slide Block Shaft	베어링 로드 연결핀	1	1	
D-40	CLF-BK000500	Slide Block	슬라이드 블록	2	2	
D-41	CLF-BJ001500	Slide Guide Plate	슬라이드 블록 안내판	2	2	
D-42	DSC-BJ000200	Screw (11/64"n=40)	홈볼이 납작 작은나사 (11/64"n=40)	4	4	
D-43	CLF-CA000800	Lever Feed Connecting Link	수평 피이드 연결 링크 (KS007)	1	1	
D-44	CLF-CB001500	Lever Feed Arm	수평밀대 크랭크	1	1	
D-45	DSC-BA001300	Screw (1/4"n=28)	홈볼이 냄비 작은나사 (1/4"n=28)	1	1	
D-46	06-139P-7400	Lever Feed Arm Pin	연결핀	1	1	
D-47	PSR-AC000500	E-ring (Ø6)	E링 (Ø6)	2	2	
D-48	DBS-DA015600	Feed Rock Shaft Bushing (Rear)	수평밀대 뒷부싱	1	1	
D-49	DSC-CA000800	Screw (15/64"n=28)	홈볼이 멈춤나사 (15/64"n=28)	1	1	

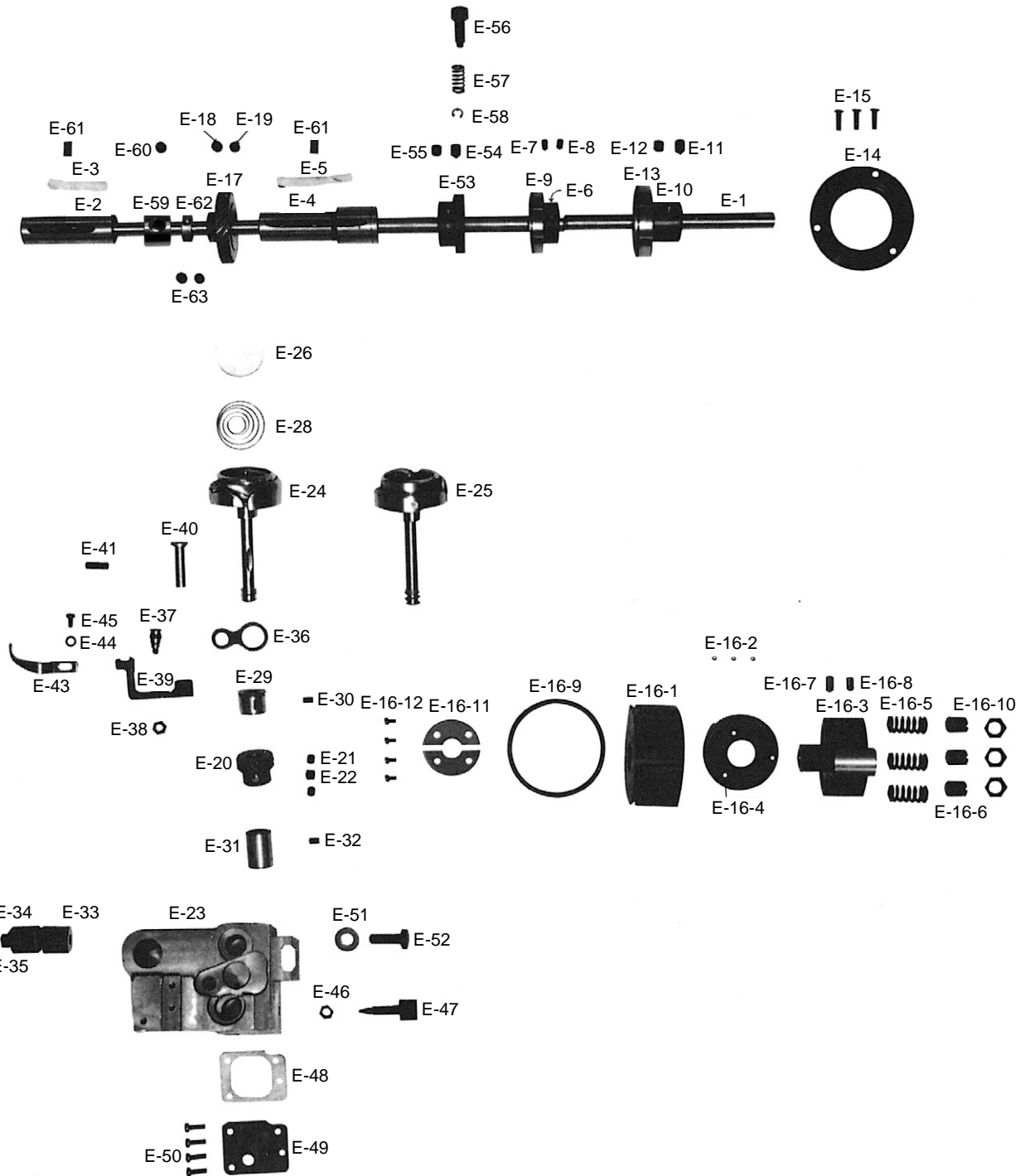
D

Feed Mechanism 피이드 관계



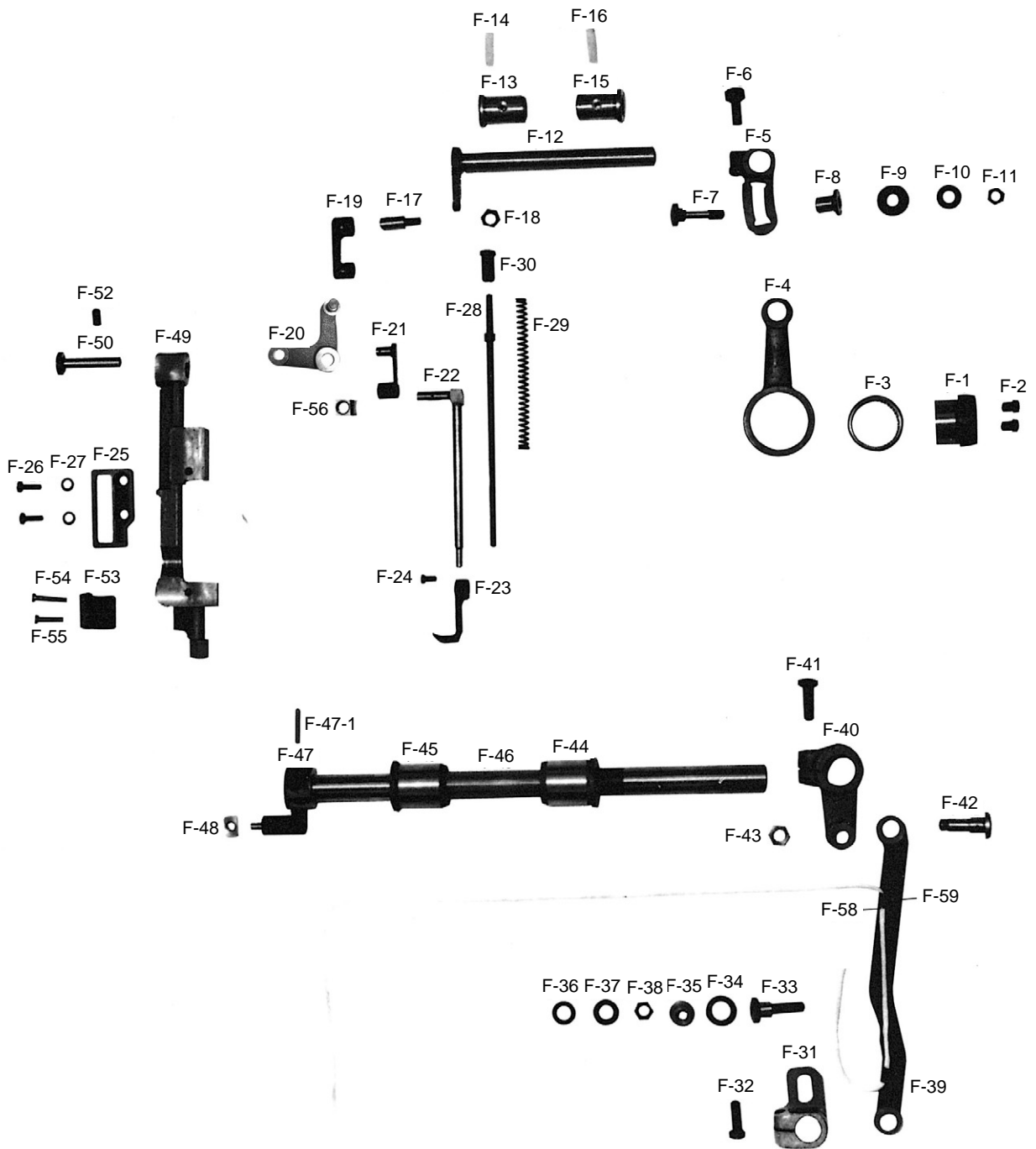
Ref. No.	Parts No.	Name of Parts	품 명	Q' ty		Applied Period
				KM-560-7	KM-560	
D-50	DCL-AA005800	Feed Rock Shaft Collar	수평밀대 카라	2	2	
D-51	DSC-CA000500	Screw (1/4"n=40)	홈볼이 멈춤나사 (1/4"n=40)	4	4	
D-52	DBS-DA028500	Feed Rock Shaft Bushing (Front)	수평밀대 앞 붓싱	1	1	
D-53	DSC-CA000800	Screw (15/64"n=28)	홈볼이 멈춤나사 (15/64"n=28)	1	1	
D-54	CLF-KZ000800	Feed Rock Shaft	수평밀대	1	1	
D-55	DSC-BA001000	Screw (11/64"n=40)	홈볼이 넙비 작은나사 (11/64"n=40)	2	2	
D-56	CLF-BA001000	Feed Bar	툽니받침	1	1	
D-57	CLF-KF001200	Feed Bar Shaft	툽니받침 축	1	1	
D-58	DWS-AA001200	Washer For D-57	툽니받침 축 와셔	2	2	
D-59	CLF-BB000800	Feed Bar Fork	툽니받침 포오크 (K2546)	1	1	
D-60	CLB-JL006800	Feed Bar Fork Felt	포크 펠트	1	1	
D-61	DSC-BB002000	Screw (9/64"n=40)	홈볼이 접시 작은나사 (9/64"n=40)	1	1	
D-61-1	DWS-AA003800	Washer For D-61	상축 펠트 와셔	1	1	
D-62	DWS-AA014400	Washer For D-61	포크 줍나사 와셔	1	1	
D-63	DSC-BJ000600	Screw (15/64"n=28)	육각 보울트 (15/64"n=28)	1	1	
D-64	CGA-GB002300	Feed Dog	툽니	1	1	
D-65	DSC-BF015500	Screw (1/8"n=44)	홈볼이 납작 작은나사 (1/8"n=44)	2	2	
D-66	CFA-BG000100	Hook For D-21	역진레버 스프링걸이	1	1	
D-67	DSC-BA000700	Screw (3/16"n=32)	홈볼이 넙비 작은나사 (3/16"n=32)	1	1	
D-68	DSC-HD000600	Adjusting Screw For D-66	스프링걸이 축나사	1	1	
D-69	DSN-AA000900	Nut (11/64"n=40)	육각너트 (11/64"n=40)	2	2	
D-70	CFA-KC001200	Feed Regulator Lever Shaft	역진레버 축	1		
D-71	CFA-CB001400	Reverse Crank	역진 크랭크	1		
D-72	DSC-AA002800	Screw (3/16"n=32)	육각볼트 (3/16"n=32)	1		
D-73	DSC-BF000400	Screw (15/64"n=28)	홈볼이 납작 작은나사 (15/64"n=28)	1	1	
D-74	DSC-FA013700	Stud Screw For D-71	역진 크랭크 단나사	1		
D-75	CFA-CA001500	Reverse Link	백택 솔레노이드 연결링크	1		
D-76	CFA-CB001100	Reverse Solenoid Crank	백택 솔레노이드 크랭크	1		
D-77	DSC-FA013900	Stud Screw For D-75	백택 솔레노이드 연결 링크 축 (X)	1		
D-78	AFA-PS000900	Spring Holder For D-21	역진레버 스프링 걸이	1		
D-79	DSP-AC004900	Reverse Lever Spring	역진레버 스프링 (A)	1		
D-80	CFA-CM001700	Reverse Feed Control Lever	역진레버 (A)	1		
D-81	DWS-AA013300	Washer For D-80	역진 레버 와셔	2		
D-82	CHK-BJ000300	Auto Reverse Lever	역진 레버 B (K2888)	1		
D-83	DSC-CB001800	Screw (1/4"n=40)	육각구멍볼이 멈춤나사 (1/4"n=40)	1		
D-84	DSC-CB000400	Screw (1/4"n=40)	육각구멍볼이 멈춤나사 (1/4"n=40)	1		
D-85	DSC-FA006200	Stud Screw For Reverse Lever Stopper (Upper)	역진 레버 스토퍼 (상) 단나사	1		
D-86	CFA-FZ000100	Reverse Lever Stopper (Upper) Rubber	역진 레버 스토퍼 (上) 고무	1		
D-87	CFA-BB001500	Reverse Lever Stopper (Lower)	역진 레버 스토퍼	1		
D-88	DSC-BF003600	Screw (11/64"n=40)	홈볼이 납작 작은나사 (11/64"n=40)	1		
D-89	DSN-AA000600	Nut (3/16"n=32)	육각너트 (3/16"n=32)	1		
D-90	CTT-BB002300	Reverse Solenoid Bracket	백택 솔레노이드 브라켓	1		
D-91	DSC-FA013800	Stud Screw For D-76	백택 솔레노이드 크랭크 축	1		
D-92	DSC-BA001300	Screw (1/4"n=28)	홈볼이 넙비 작은나사 (1/4"n=28)	3		
D-93	DSD-AA002400	Reverse Solenoid(Ass'y)	백택 솔레노이드 (조)	1		
D-94	DSC-BA000700	Screw (3/16"n=32)	홈볼이 넙비 작은나사 (3/16"n=32)	1		
D-95	CFA-LA000300	Reverse Solenoid Cover	백택 솔레노이드 커버 (X)	1		
D-97	DSC-BA000700	Screw (3/16"n=32)	홈볼이 넙비 작은나사 (3/16"n=32)	1		

Lower Shaft & Rotary Hook Mechanism 하축 및 로타리 훅 관계



Ref. No.	Parts No.	Name of Parts	품명	Q'ty		Applied Period
				KM-560-7	KM-560	
E-1	CLS-KF000700	Lower Shaft	하축	1	1	
E-2	DBS-DA028600	Lower Shaft Bushing (Front)	하축 전붓싱	1	1	
E-3	CLB-JD000100	Felt For E-2	하축 앞 붓싱 펠트 (5-4)	1	1	
E-4	DBS-DA028700	Lower Shaft Bushing (Middle)	하축 중붓싱	1	1	
E-5	CLB-JD000100	Felt For E-4	하축 앞 붓싱 펠트 (5-4)	1	1	
E-6	DCL-AB003500	Bearing Bushing (Middle)	하축 중베어링 붓싱	1		
E-7	DSC-CA004800	Screw (11/64" n=40)	홈볼이 멈춤나사 (11/64" n=40)	1		
E-8	DSC-CA001600	Screw (11/64" n=40)	홈볼이 멈춤나사 (11/64" n=40)	1		
E-9	PBR-AA006000	Bearing (6904NR)	하축 중베어링 (6904NR)	1		
E-10	DCL-AB002300	Bearing Bushing (Rear)	하축 후베어링 붓싱	1	1	
E-11	DSC-CB001800	Screw (1/4" n=40)	육각구멍볼이 멈춤나사 (1/4" n=40)	1	1	
E-12	DSC-CB000400	Screw (1/4" n=40)	육각구멍볼이 멈춤나사 (1/4" n=40)	1	1	
E-13	PBR-AA007400	Bearing (6004NR)	하축 후베어링 (6004NR)	1	1	
E-14	CLS-BJ000600	Bearing Presser	하축 후베어링 누름판	1	1	
E-15	DSC-BB003700	Screw (9/64" n=40)	접시머리 보울트 (9/64" n=40)	3	3	
E-16-1	DPL-BB000700	Safety Clutch Belt Pulley	안전장치 벨트 풀리	1	1	
E-16-2	PBR-AD000900	Safety Clutch Driving Ball	안전장치 클러치 구동용 볼 7/3	3	3	
E-16-3	CLS-BA000200	Safety Clutch Collar	안전장치 카라	1	1	
E-16-4	CLS-BJ001000	Safety Clutch Disc	안전장치 클러치 판 (K2542)	1	1	
E-16-5	DSP-AA009600	Safety Clutch Spring	안전장치 스프링	3	3	
E-16-6	DSC-CA004200	Screw (M10×1.25)	홈볼이 멈춤나사 (M10×1.25)	3	3	
E-16-7	DSC-CB001800	Screw (1/4" n=40)	육각구멍볼이 멈춤나사 (1/4" n=40)	1	1	
E-16-8	DSC-CB000400	Screw (1/4" n=40)	육각구멍볼이 멈춤나사 (1/4" n=40)	1	1	
E-16-9	DSR-AK000500	Safety Clutch Belt Pulley Ring	후렌치	1	1	
E-16-10	PSN-AA003600	Nut For E-16-7	안전장치 스프링 조정나사 너트	3	3	
E-16-11	CLS-BJ001100	Safety Clutch Collar Washer	안전장치 카라 와셔	2	2	
E-16-12	DSC-BB002000	Safety Clutch Collar Washer Screw	안전장치 카라 와셔 나사	4	4	
E-17	DGR-AB001100	Spiral Gear	기어 (대)	1	1	
E-18	DSC-CB000400	Screw (1/4" n=40)	홈볼이 멈춤나사 (1/4" n=40)	2	2	
E-19	DSC-CB001800	Screw (1/4" n=40)	홈볼이 멈춤나사 (1/4" n=40)	1	1	
E-20	DGR-AB001200	Rotary Hook Gear	기어 (소)	1	1	
E-21	DSC-CB001000	Screw (1/4" n=40)	홈볼이 멈춤나사 (1/4" n=40)	2	2	
E-22	DSC-CB001000	Screw (1/4" n=40)	홈볼이 멈춤나사 (1/4" n=40)	1	1	
E-23	CHB-BA001300	Hook Base	훅 받침	1	1	
E-24	CHK-HA002400	Rotary Hook (Ass'y) (HSH-12-15MMB(5)TR4)	가마 (HSH12-15(5)TRI)	1Set		
E-25	CHK-HA002500	Rotary Hook (Ass'y) (HSH-12-15MM(5))	가마 (HSH12-15MM(5))		1Set	
E-26	CHK-HB001000	Bobbin (AL)	보빈	1	1	
E-28	DSP-BA002600	Bobbin Tension Spring	보빈 장력조절 스프링	1	1	
E-29	DBS-DB008600	Rotary Hook Bushing (Upper)	가마 축 붓싱 (상)	1	1	
E-30	PSC-CB000200	Screw (3/16" n=28)	홈볼이 멈춤나사 (3/16" n=28)	1	1	
E-31	DBS-DA027600	Rotary Hook Bushing (Lower)	가마 축 붓싱 (하)	1	1	
E-32	PSC-CB000200	Screw (3/16" n=28)	홈볼이 멈춤나사 (3/16" n=28)	1	1	
E-33	CHB-BF000100	Pinch Sleeve (Upper)	가마 토대 슬리브 (上)	1	1	
E-34	CHB-BF000200	Pinch Sleeve (Lower)	가마 토대 슬리브 (下)	1	1	
E-35	DSC-BF012900	Screw (15/64" n=28)	홈볼이 납작 작은나사 (15/64" n=28)	1	1	
E-36	CHB-CA000100	Opener Link	오프너 링크	1	1	
E-37	DSC-GB000401	Stud Screw For Opener Link	오프너 링크 축	1	1	
E-38	DSN-AA000600	Nut (3/16" n=32)	육각너트 (3/16" n=32)	1	1	
E-39	CHB-CM000100	Opener Lever	오프너 레버	1	1	
E-40	CHB-KC000400	Opener Lever Stud	오프너 레버 축	1	1	
E-41	DSC-CA003000	Screw (3/16" n=32)	홈볼이 멈춤나사 (3/16" n=32)	1	1	
E-43	CHB-HN000101	Bobbin Case Opener	보빈 케이스 오프너	1	1	
E-44	DWS-AA003800	Opener Washer	상축 펠트 와셔	1	1	
E-45	DSC-BJ001400	Screw (9/64" n=40)	홈볼이 둥근납작 작은나사 (9/64" n=40)	1	1	
E-46	DSN-AA003200	Nut For E-47	유량 조절 너트	1	1	
E-47	DSC-HZ001700	Oil Adjusting Screw	유량 조절 나사	1	1	
E-48	CHB-FC000300	Hook Base Gasket	훅받침 가스켓	1	1	
E-49	CHB-LB000100	Hook Base Cover	훅받침 커버	1	1	
E-50	DSC-BF010100	Screw (9/64" n=40)	홈볼이 납작 작은나사 (9/64" n=40)	4	4	
E-51	DWS-AA002200	Washer For E-52	훅 받침 와셔	1	1	
E-52	DSC-BJ004400	Screw For Hook Base	요동 로드 쥘나사	1	1	
E-53	CLS-CS0000200	Rock Ratchet	안전장치 래치트	1	1	
E-54	DSC-CB001800	Screw (1/4" n=40)	육각구멍볼이 멈춤나사 (1/4" n=40)	1	1	
E-55	DSC-CB000400	Screw (1/4" n=40)	육각구멍볼이 멈춤나사 (1/4" n=40)	1	1	
E-56	DPN-BC000500	Ratchet Button	래치트 버튼	1	1	
E-57	DSP-AA007200	Ratchet Button Spring	피드 조절 버튼 스프링	1	1	
E-58	PSR-AC000400	E-Ring (Ø3)	톱니받침 블럭축 E링 (Ø3)	1	1	
E-59	CLF-DC001100	Vertical Feed Eccentric Cam	편심 캠	1	1	
E-60	DSC-CB001000	Screw (1/4" n=40)	홈볼이 멈춤나사 (1/4" n=40)	1	1	
E-61	DSC-CA000800	Screw (15/64" n=28)	홈볼이 멈춤나사 (15/64" n=28)	2	2	
E-62	DCL-AA002800	Collar For Feed Regulator	피이드 조절기 축 카라	1	1	
E-63	DSC-CA000500	Screw (1/4" n=40)	홈볼이 멈춤나사	2	2	

Upper Feed Mechanism 상피이드 관계

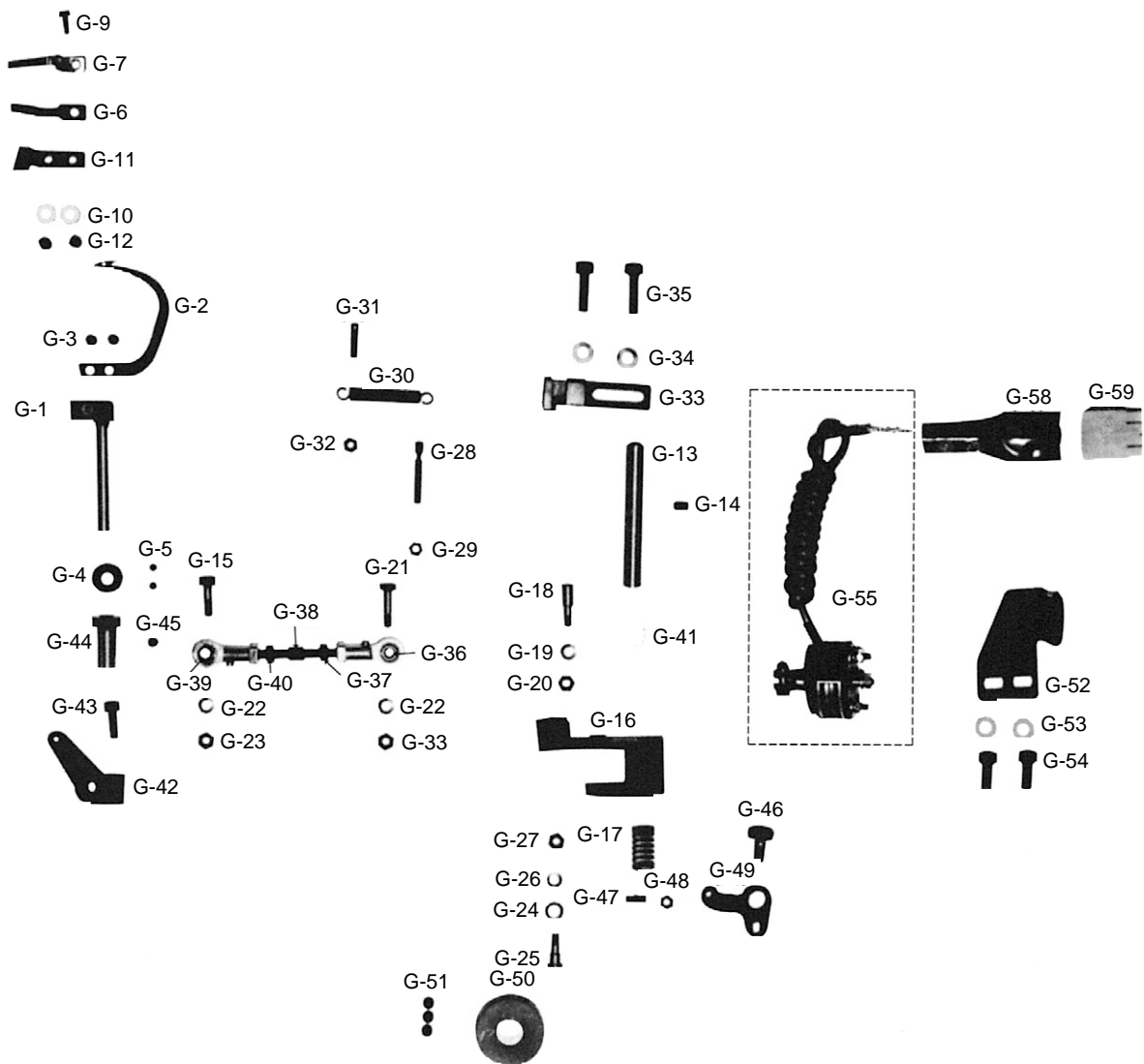


Ref. No.	Parts No.	Name of Parts	품 명	Q' ty		Applied Period
				KM-560-7	KM-560	
F-1	CUF-DC000500	Upper Feed Lifting Eccentric Cam	노루발 상하 운동 캠	1	1	
F-2	DSC-BJ002000	Screw For F-1	노루발 상하 운동 캠 고정나사	2	2	
F-3	PBR-BA002800	Needle Bearing	니들 베어링	1	1	
F-4	CUF-CC001500	Upper Feed Lifting Rod	노루발 상하 운동 캠 로드	1	1	
F-5	CUF-CB001900	Upper Feed Lifting Eccentric Wheel Crank	상하운동 크랭크 (K2556)	1	1	
F-6	DSC-AA000700	Screw (1/4"n=28)	육각 보울트 (1/4"n=28)	1	1	
F-7	CUF-KZ000700	Upper Feed Lifting Adjusting Shaft	노루발 상하운동 조절축	1	1	
F-8	DBS-DB006700	Upper Feed Lifting Adjusting Shaft Bushing	노루발 상하운동 조절축 붓싱	1	1	
F-9	15-009A-5607	Collar For F-7	노루발 상하운동 조절축 카라	1	1	
F-10	DWS-AA006300	Washer For F-7	노루발 상하운동 조절축 와셔	1	1	
F-11	DSN-AA001300	Nut (1/4"n=40)	육각너트 (1/4"n=40)	1	1	
F-12	CUF-KZ000501	Upper Feed Driving Shaft	상하 운동축	1	1	
F-13	DBS-DB006200	Upper Feed Shaft Bushing (Front)	상하 운동축 전붓싱	1	1	
F-14	CLB-JL009000	Felt For F-13	상하 운동축 전붓싱 헬트	1	1	
F-15	DBS-DB006300	Upper Feed Shaft Bushing (Rear)	상하 운동축 후붓싱	1	1	
F-16	CLB-JL009000	Felt For F-15	상하 운동축 후붓싱 헬트	1	1	
F-17	DSC-FF001900	Stud Screw For Connecting Link	상피이드 연결 링크축 나사	1	1	
F-18	DSN-AA001300	Nut For F-17	상피이드 연결 링크축 나사너트	1	1	
F-19	CUF-CA001500	Upper Feed Lifting Connecting Link	상피이드 연결 링크	1	1	
F-20	CUF-CA001700	Link For Upper Feed Foot	상피이드 노루발 연결링크	1	1	
F-21	CUF-CA001800	Walking Bar Driving Link	상피이드 노루발 운동링크	1	1	
F-22	CUF-CR000100	Walking Bar	상피이드 노루발대	1	1	
F-23	CGA-GC005900	Upper Feed Presser Foot	상피이드 노루발 (B)	1	1	
F-24	DSC-BA001000	Screw (11/64"n=40)	홈볼이 냄비 작은나사 (11/64"n=40)	1	1	
F-25	CNB-BK001200	Walking Bar Guide Plate	노루발대 안내판 (K2555)	1	1	
F-26	DSC-BF001000	Screw (11/64"n=40)	홈볼이 납작 작은나사 (11/64"n=40)	2	2	
F-27	DWS-AA001100	Washer For F-26	뿔뚜껑 첩와셔	2	2	
F-28	CUF-KF000300	Walking Foot Pressure Adjusting Pole	상피이드 노루발 압력봉	1	1	
F-29	DSP-AA009400	Spring For F-28	상피이드 노루발 압력 스프링	1	1	
F-30	DSC-BF003500	Screw (5/16"n=28)	홈볼이 납작 작은나사 (5/16"n=28)	1	1	
F-31	CUF-CB002800	Needle Bar Rock Crank	바늘대 요동 크랭크	1	1	
F-32	DSC-BA001300	Screw (1/4"n=28)	홈볼이 냄비 작은나사 (1/4"n=28)	1	1	
F-33	DSC-FA019800	Needle Bar Rock Crank Stud	바늘대 요동 크랭크 단나사	1	1	
F-34	DWS-AA010700	Washer (A) For F-31	바늘대 요동 크랭크 와셔 (A)	1	1	
F-35	DSN-CY001100	Needle Bar Rock Crank Holder	바늘대 요동 크랭크 카라	1	1	
F-36	DWS-AA002900	Washer (B) For F-31	새들 첩나사 와셔	1	1	
F-37	DWS-AA017100	Spring Washer For F-31	바늘대 요동 크랭크 스프링 와셔	1	1	
F-38	DSN-AA002200	Nut (9/32"n=28)	육각너트 (9/32"n=28)	1	1	
F-39	CUF-CC002200	Connecting Rod For Needle Bar Frame Driving Shaft	요동축 연결 로드	1	1	
F-40	CUF-CA002000	Needle Bar Rock Shaft Link	바늘대 요동 링크	1	1	
F-41	DSC-BJ004400	Screw For F-40	요동 로드 첩나사	1	1	
F-42	DSC-GA000901	Stud Screw Needle Bar Rock Shaft Link	요동 링크 단나사	1	1	
F-43	DSN-AA003000	Nut (5/16"n=24)	육각너트 (5/16"n=24)	1	1	
F-44	DBS-DB004300	Needle Bar Rock Shaft Bushing (R)	요동축 뒷 붓싱	1	1	
F-45	DBS-DB004200	Needle Bar Rock Shaft Bushing (F)	요동축 앞 붓싱	1	1	
F-46	CNB-KF000500	Needle Bar Frame Driving Shaft	요동축	1	1	
F-47	CNB-CB000500	Needle Bar Frame Shaft Crank	요동축 크랭크 (前)	1	1	
F-47-1	DPN-AB000200	Taper Pin	바늘대 후레임 고정핀	1	1	
F-48	CNB-CD001100	Needle Bar Block	바늘대 후레임 블럭	1	1	
F-49	CNB-BC000700	Needle Bar Frame	바늘대 후레임	1	1	
F-50	DPN-AB000400	Hinge Pin For Needle Bar Frame	바늘대 후레임 힌지핀	1	1	
F-52	DSC-CA000800	Screw (15/64"n=28)	홈볼이 멈춤나사 (15/64"n=28)	1	1	
F-53	CNB-BK001300	Guide For Needle Bar Frame	바늘대 후레임 안내판	1	1	
F-54	DSC-BJ005300	Screw (A) For F-53	바늘대 후레임 안내판 첩나사 B	1	1	
F-55	DSC-BA001100	Screw (11/64"n=40)	홈볼이 냄비 작은나사 (11/64"n=40)	1	1	
F-56	CUF-CD000200	Walking Bar Guide Block	상피이드 노루발 안내 블럭	1	1	
F-58	CLB-BG004100	Wick Supporter For F-57	유심잡이 (2-51)	2	2	
F-59	DSC-BJ001100	Screw (9/64"n=40)	홈볼이 둥근납작 작은나사 (9/64"n=40)	2	2	

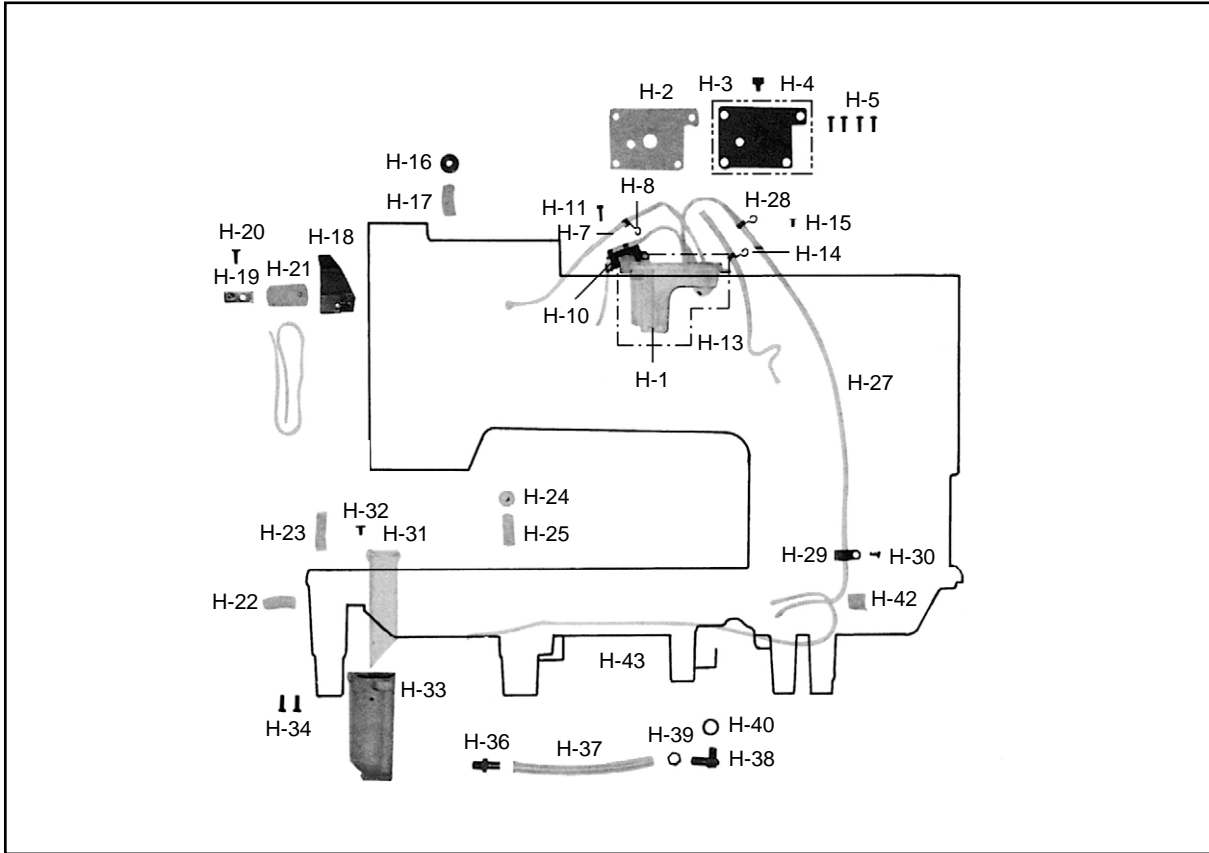


Thread Trimmer Mechanism

사절 관계



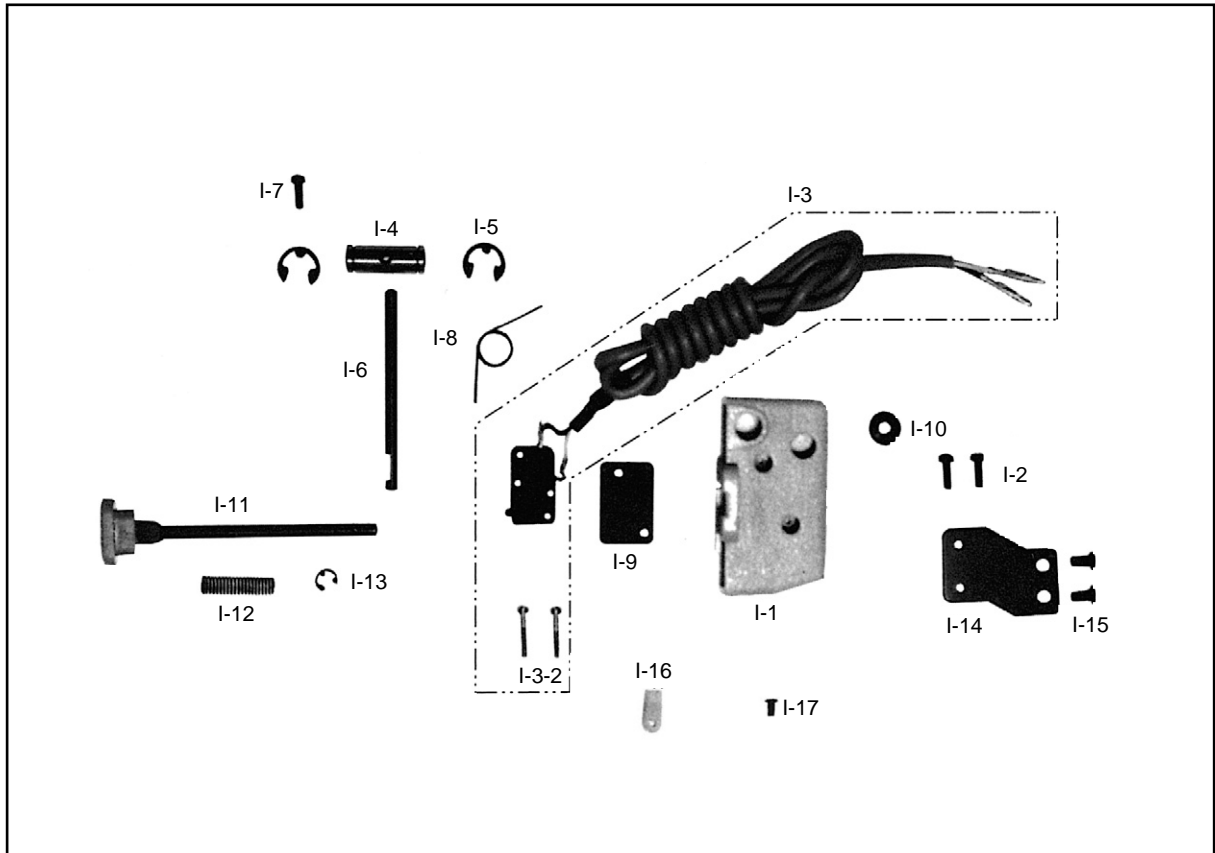
Ref. No.	Parts No.	Name of Parts	품 명	Q' ty		Applied Period
				KM-560-7	KM-560	
G-1	CTT-KZ000200	Moving Knife Shaft (R)	동메스 축 (우)	1		
G-2	CTT-NA001800	Moving Knife	회전메스 (T=1.8)	1		
G-3	DSC-BB001400	Screw (11/64"n=40)	접시머리 보울트(11/64"n=40)	2		
G-4	DCL-AA005900	Moving Knife Shaft Collar	동메스 축 카라	1		
G-5	PSC-CB000200	Screw (M4)	육각구멍볼이 멈춤나사(M4)	1		
G-6	CTT-BJ003800	Thread Catcher	밀실잡이	1		
G-7	CTT-NB001200	Fixed Knife	고정메스 (2122707-556A)	1		
G-9	DSC-BB001400	Screw (11/64"n=40)	접시머리 볼트(11/64"n=40)	1		
G-10	DWS-AA002100	Washer For Moving Knife Tension Adjusting	동메스 장력 조절 와셔	2		
G-11	CTT-BB003200	Moving Knife Bracket	동메스 브라켓	1		
G-12	PSC-AC001500	Screw (11/64"n=40)	접시머리 볼트(11/64"n=40)	2		
G-13	CTT-KC000800	Thread Trimming Rock Link Shaft	사절 요동 링크 축	1		
G-14	DSC-CB000100	Screw G-13	동메스 축 붓싱 고정나사	1		
G-15	DSC-FA012700	Screw For Moving Knife Shaft Connecting Joint	동메스 축 연결 조인트 쥘나사	1		
G-16	CTT-CA001100	Thread Trimming Rock Link	사절 요동 링크	1		
G-17	DSP-AA006500	Return Spring For Stopper Pin	스토퍼 핀 복귀 스프링	1		
G-18	DSC-GB000300	Screw For Stopper Pin	스토퍼 핀 나사	1		
G-19	DWS-CA000100	Washer For Stopper Pin	가마 잡이 와셔	1		
G-20	DSN-AA001400	Nut For Stopper Pin	볼 조인트 쥘 너트 (우)	1		
G-21	DSC-FA014100	Stud Screw For Rod End	요동 링크 연결 조인트 단나사	1		
G-22	DWS-CA000100	Washer For Rod End	가마 잡이 와셔	1		
G-23	DSN-AA001400	Nut For G-21	볼 조인트 쥘 너트 (우)	1		
G-24	CTT-CL000300	Roller For Thread Trimming Cam Roller	로올러	1		
G-25	DSC-GA000400	Stud Screw For Thread Trimming Cam	사절 캠 로올러 단나사	1		
G-26	DWS-CA000100	Washer For G-25	가마잡이 와셔	1		
G-27	DSN-AA001400	Nut For G-25	볼 조인트 쥘 너트 (우)	1		
G-28	DSC-HD000200	Adjusting Screw For Return Spring	스프링 걸이 축 나사	1		
G-29	DSN-AA000900	Nut (11/64"n=40)	육각너트 (11/64"n=40)	1		
G-30	DSP-AB003600	Thread Trimming Return Spring	사절 리턴 스프링	1		
G-31	DSC-HD000200	Hook For Return Spring	리턴 스프링 걸이 축 나사	1		
G-32	DSN-AA000900	Nut (11/64"n=40)	육각너트 (11/64"n=40)	1		
G-33	CTT-BF001100	Holder For Stopper Pin	사절 캠 운동핀 홀더	1		
G-34	PWS-CA000500	Washer For G-33	싱크로 베이스 스프링 와셔 (ø6)	2		
G-35	PSC-AC000600	Screw (M6)	육각구멍볼이 보울트 (M6)	2		
G-36	PBR-GB000100	Rod End (R) MTR BNF-5	롯데 앤드 (우)	1		
G-37	DSN-AA001400	Nut (R) For G-36	볼 조인트 쥘 너트 (우)	1		
G-38	CTT-CC001400	Joint Connection Stud	볼 조인트 연결봉 (1/16"~1/2")	1		
G-39	PBR-GB000500	Rod End (L) MTR BNF-5L	롯데 앤드 (좌)	1		
G-40	DSN-AA002600	Nut (L) For G-39	볼 조인트 쥘 너트 (좌)	1		
G-41	CTT-FB000200	Cushion Rubber	쿠션 고무 (B)	1		
G-42	CTT-CM003200	Thread Trimming Lever	사절 레버 (X)	1		
G-43	PSC-AC006100	Screw (M5×0.8)	육각구멍볼이 보울트 (M5×0.8)	1		
G-44	DBS-DB004400	Moving Knife Shaft Bushing (R)	동메스축 붓싱 (우)	1		
G-45	DSC-CB000100	Screw (M4)	육각구멍볼이 멈춤나사 (M4)	1		
G-46	DSC-FA014000	Stud Screw For Clutch Lever	클러치 레버 단나사	1		
G-47	DSC-CA003300	Screw For Clutch Lever Pin	클러치 레버 핀 나사	1		
G-48	DSN-AA000900	Nut (11/64"n=40)	육각너트 (11/64"n=40)	1		
G-49	CTT-CM002000	Clutch Lever	클러치 레버	1		
G-50	CTT-DD000300	Thread Trimming Cam	사절캠	1		
G-51	DSC-CB000400	Screw (1/4"n=40)	육각구멍볼이 멈춤나사 (1/4"n=40)	3		
G-52	CTT-BB002300	Bracket For G-55	사절 솔레노이드 브라켓	1		
G-53	PWS-CA000500	Spring Washer For G-52	싱크로 베이스 스프링 와셔 (ø6)	3		
G-54	PSC-AC001200	Screw (M6)	육각구멍볼이 볼트 (M6)	2		
G-55	DSD-AA002500	Thread Trimming Solenoid (Ass'y)	사절 솔레노이드 (조)	1Set		
G-58	11-019M-2350	Tube (Large) For G-55	솔레노이드 튜브	3		
G-59	11-018M-2350	Plug (Large) For G-55	솔레노이드 플러그	1		



Ref. No.	Parts No.	Name of Parts	품명	Q' ty		Applied Period
				KM-560-7	KM-560	
H-1	ALB-PS002500	Oil Tank Ass'y	오일 탱크 (조)	1	1	
H-2	CLB-FC000200	Gasket For Oil Tank	오일 탱크 가스켓	1	1	
H-3	ALB-PS002600	Oil Tank Presser Ass'y	오일 탱크 누름판 (조)	1	1	
H-4	DPK-CY001300	Cap For Oil Tank Pipe	주유구 마개 (6-8)	1	1	
H-5	DSC-BJ000400	Screw (11/64" n=40)	홈볼이 납작 작은나사 (11/64" n=40)	4	4	
H-7	CLB-JG000300	Hose For H-6	환류 파이프	1	1	
H-8	CLB-BF000400	Holder For H-7	유심 웰트 고정판 (6-7)	1	1	
H-10	CLB-BF001100	Holder For H-9	노루발 상하운동 캠 로트드 유심잡이	1	1	
H-11	DSC-BJ001400	Screw (9/64" n=40)	홈볼이 둥근납작 작은나사 (9/64" n=40)	1	1	
H-13	CLB-JG000300	Hose For H-12	환류 파이프	1	1	
H-14	CLB-BH000400	Holder For H-13	웰트 잡이 스프링	1	1	
H-15	DSC-BJ001400	Screw (9/64" n=40)	홈볼이 둥근납작 작은나사 (9/64" n=40)	1	1	
H-16	DSC-BF015600	Oil Insert Screw	오일 입구 나사	1	1	
H-17	CLB-JL003000	Felt For Take-Up Lever Oil Tank	흑 몸체 전 붓싱 웰트 (6-19)	1	1	
H-18	CLB-BJ001900	Oil Cover	유방판	1	1	
H-19	CLB-BJ002100	Oil Cover Presser	기름막이 누름판	1	1	
H-20	DSC-BA000700	Screw (3/16" n=32)	홈볼이 납비 작은나사 (3/16" n=32)	1	1	
H-21	CLB-JL006400	Felt For B-39	실채기 급유 웰트 (6-14)	1	1	
H-22	CLB-JL007000	Cap Felt For E-2	하측 앞 붓싱 마개 웰트 (5-3)	1	1	
H-23	CLB-JL003000	Felt For E-2	흑 몸체 전 붓싱 웰트 (6-19)	1	1	
H-24	DPK-CB001100	Bed Oil Cap	고무마개 (Hole)	1	1	
H-25	CLB-JL003000	Felt For E-4	흑 몸체 전 붓싱 웰트 (6-19)	1	1	
H-27	CLB-JG000300	Hose For H-26	환류 파이프	1	1	
H-28	CLB-BH000400	Hook For H-27	웰트 잡이 스프링	1	1	
H-29	CLB-BH000400	Holder For Bed Oil Supply Wick	유심 웰트 고정판 (6-7)	1	1	
H-30	DSC-BJ001100	Screw (9/64" n=40)	홈볼이 둥근납작 작은나사 (9/64" n=40)	1	1	
H-31	CLB-JN000900	Oil Gauge	오일 게이지	1	1	
H-32	DSC-BG000100	Screw (9/64" n=40)	홈볼이 바인딩 작은나사 (9/64" n=40)	1	1	
H-33	CLB-JB001600	Oil Supply Tank For Hook	흑 급유 탱크	1	1	
H-34	DSC-BF002600	Screw (9/64" n=40)	홈볼이 둥근납작 작은나사 (9/64" n=40)	2	2	
H-36	CLB-JP003200	Oil Joint (1)	오일 조인트 (1)	1	1	
H-37	CLB-JG000600	Hose For E-24, E-25	오일 탱크 호스 (6×9×130 M/M)	1	1	
H-38	CLB-JP003300	Oil Joint (2)	오일 조인트 (2)	1	1	
H-39	DSN-AA004400	Nut	오일 조인트 (2) 너트	1	1	
H-40	DWS-AA017400	Gasket For H-38	흑 급유 탱크 패킹 2610F×1.2T	1	1	
H-42	CLB-JL003000	Felt For D-30	흑 몸체 전 붓싱 웰트 (6-19)	1	1	

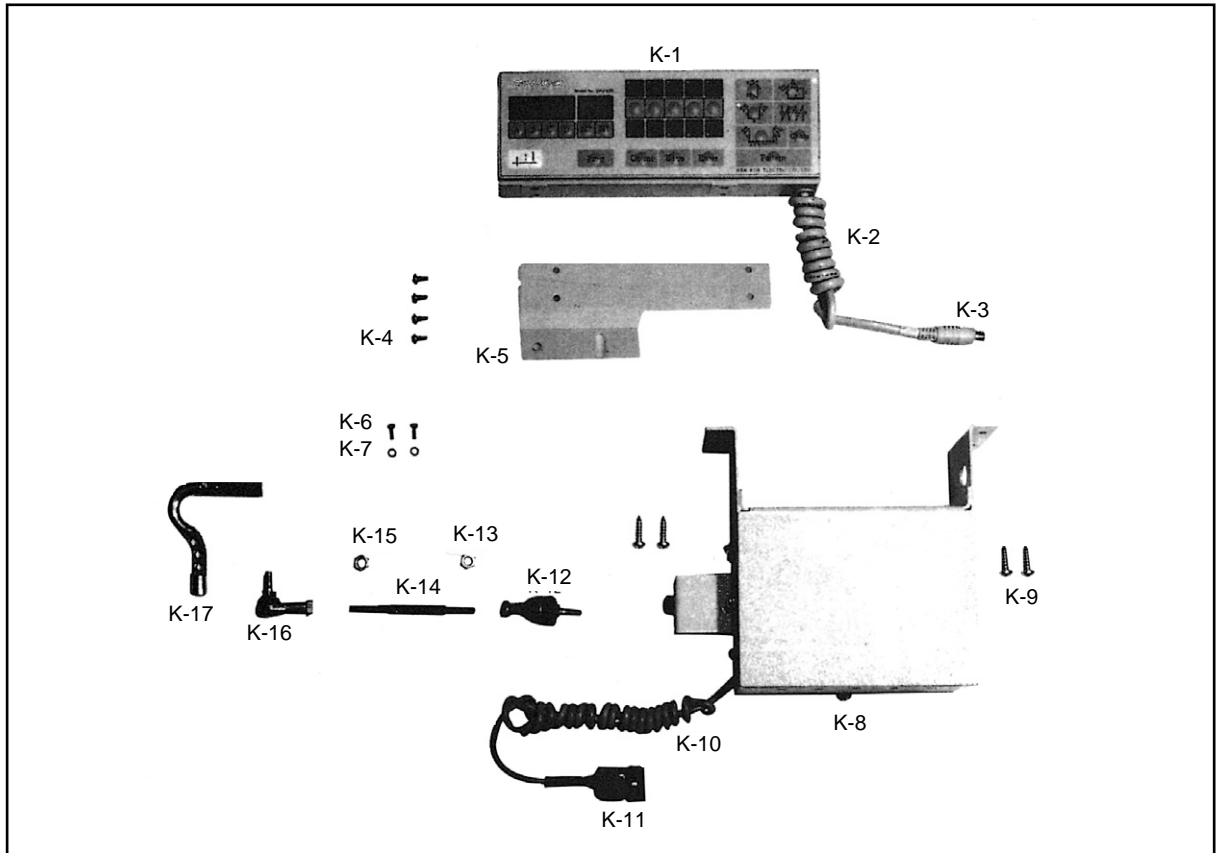
Reverse Button Mechanism

역진 버튼 관계



Ref. No.	Parts No.	Name of Parts	품 명	Q' ty		Applied Period
				KM-560-7	KM-560	
I-1	CRB-LC000100	Button Case	버튼 케이스	1		
I-2	DSC-BJ000400	Screw (11/64"n=40)	홈볼이 둥근납작 작은나사 (11/64"n=40)	2		
I-3	12-131A-5607	Micro Switch Ass'y	역진 버튼 스위치 (조)	1		
I-3-2	DSC-BJ005500	Screw (M2×0.4)	홈볼이 둥근납작 작은나사 (M2×0.4)	2		
I-4	DPN-AA003500	Reverse Button Actuator Pin	역진 버튼 작동핀	1		
I-5	PSR-AC000100	E-Ring (∅9)	제어체 축링 (E링 9)	2		
I-6	CRB-KC000300	Actuator Bar	역진버튼 스위치 누름대	1		
I-7	DSC-BA001100	Screw For I-6	누름대 잠이 나사	1		
I-8	DSP-AC002200	Actuator Bar Spring	역진 버튼 스위치 누름대 스프링	1		
I-9	CRB-FD000100	Insulated Rubber	스위치 받침 절연 고무	1		
I-10	DPK-CB001900	Reverse Button Cable Bushing	역진 버튼 케이블 붓싱	1		
I-11	ARB-PS000900	Reverse Button Ass'y	역진 버튼 (조)	1		
I-12	DSP-AC005500	Reverse Button Return Spring	역진 버튼 리턴 스프링	1		
I-13	PSR-AC000300	E-Ring (∅3)	톱니 받침 블럭축 E링 3	1		
I-14	CRB-BJ000600	Micro Switch Base	버튼 케이스 고정판	1		
I-15	DSC-BJ000200	Screw (11/64"n=40)	홈볼이 둥근납작 작은나사 (11/64"n=40)	2		
I-16	DTC-AH000100	Cable Holder	케이블 홀더	1		
I-17	DSC-BJ001100	Screw	윗뚜껑고정판고정나사소	1		

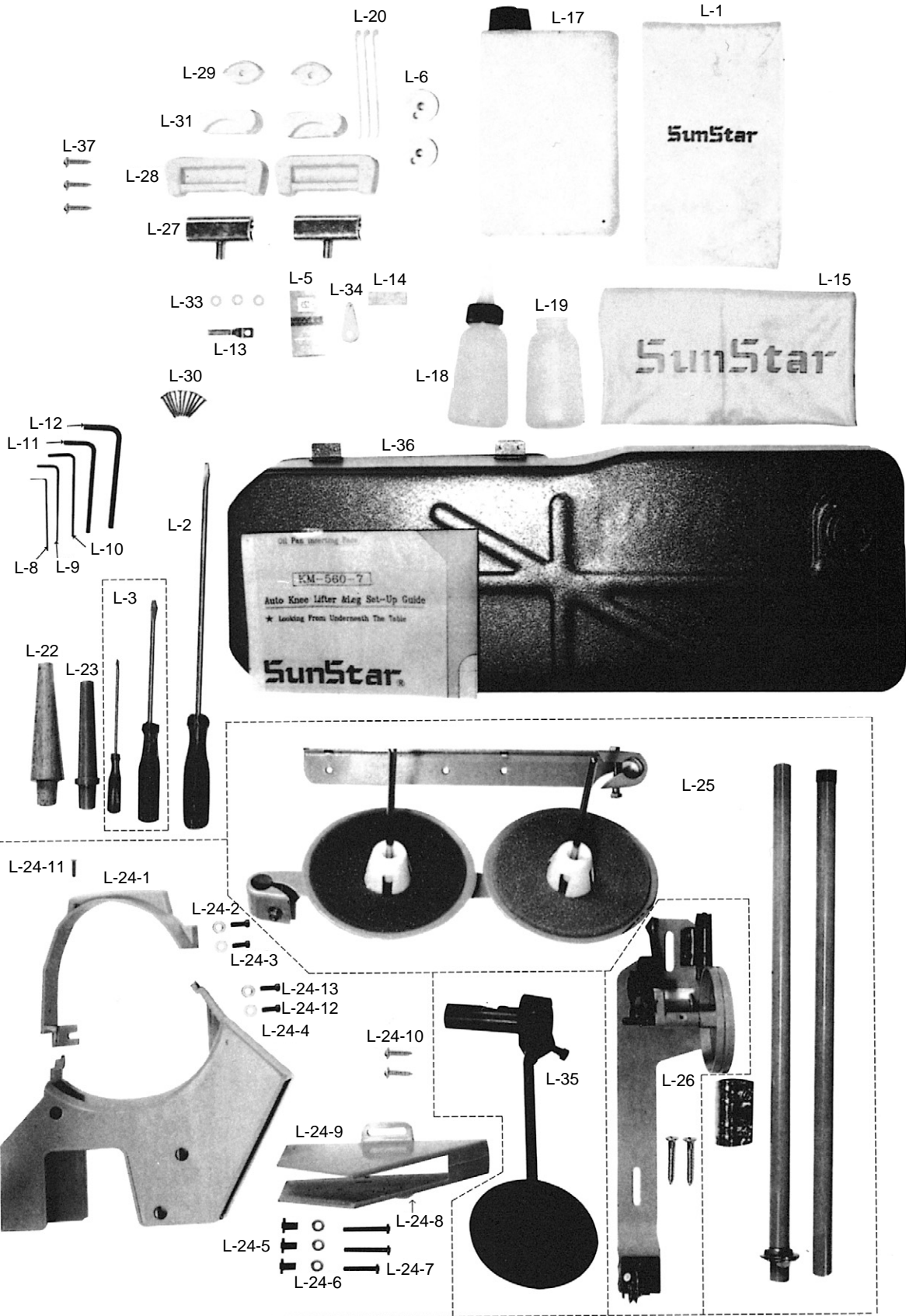
Program Unit Box & Presser Foot Lifting Solenoid Mechanism 프로그램 유니트 및 노루발 올림 장치 관계



Ref. No.	Parts No.	Name of Parts	품 명	Q' ty		Applied Period
				KM-560-7	KM-560	
K-1	S P - 2 0 0	Program Unit Box	프로그램유니트 박스	1		
K-2	20-016A-S100	Cable For K-1	프로그램유니트박스 케이블	1		
K-3	20-016A-S100	Plug For K-1	프로그램유니트박스 플러그	1		
K-4	91-029-S100	Screw For K-1	프로그램유니트박스 고정나사	4		
K-5	91-002S-S100	Bracket For K-1	프로그램유니트박스 브라켓	1		
K-6	91-030S-1000	Screw For K-5	프로그램유니트박스 브라켓 고정나사	2		
K-7	01-039W-1701	Spring Washer For K-6	프로그램유니트박스 브라켓고정나사 스프링와셔	2		
K-8	18-007B-5607	Auto Knee Litter Solenoid Assembly	자동무릎올림 솔레노이드(組)	1(set)		
K-9	91-027S-3000	Screw For K-8	솔레노이드(組) 고정나사	4		
K-10	12-015M-2350	Cable For K-8	케이블	1		
K-11	17-016B-3701	Plug For K-8	플러그	1		
K-12	18-021A-5607	Belt Joint (Right)	볼 조인트(右)	1		
K-13	18-016S-5607	Nut(R) For K-12	조인트연결봉 고정너트(右)	1		
K-14	25-004A-3200	Belt Joint Connecting Rod	볼 조인트 연결봉	1		
K-15	18-015S-5607	Nut(L) For K-16	조인트연결봉 고정너트(左)	1		
K-16	18-020A-5607	Ball Joint(Left)	볼 조인트(左)	1		
K-17	25-005A-3100	Knee Lifting Pad Assy	레버층 조인트 연결봉	1		



Accessories 액세서리



Ref. No.	Parts No.	Name of Parts	품 명	Q' ty		Applied Period
				KM-560-7	KM-560	
L-1	CAC-MH000100	Accessories Bag	액세서리 박스	1	1	
L-2	PTL-BA000100	Driver (Large)	드라이버 (大)	1	1	
L-3	PTL-BA000200	Driver (Middle, Small)	드라이버 (中, 小)	1	1	
L-5		Needle	바늘	1	1	
L-6	CHK-HB001000	Bobbin (AL)	보빈	2	4	
L-8	PTL-AB000100	L-Wrench (2mm)	L-렌치 (2mm)	1		
L-9	PTL-AB000300	L-Wrench (2.5mm)	L-렌치 (2.5mm)	1		
L-10	PTL-AB000500	L-Wrench (3mm)	L-렌치 (3mm)	1	1	
L-11	PTL-AB000400	L-Wrench (4mm)	L-렌치 (4mm)	1		
L-12	PTL-AB000200	L-Wrench (5mm)	L-렌치 (5mm)	1		
L-13	CTT-NB001200	Fixed Knife	고정메스 2122707-556A	1		
L-14	CLB-JL006500	Upper Thread Oil Felt	윗실 급유 felt	1	1	
L-15	CAC-MA000500	Head Cover	미싱 커버 (대)	1	1	
L-17	PTL-BA000200	Oil	오일캔	1	1	
L-18	CAC-JB000100	Oiler	유차	1	1	
L-19	CST-JB000100	Oil Tank	유차병	1	1	
L-20	PTC-AG000100	Band Clip	나이론 클립	5		
L-22	CST-CR000800	Head Rest	두부 지지봉	1		
L-23	CST-CR000400	Head Rest	미싱 받침대		1	
L-24	60-000A-5607	Belt Cover Ass'y	벨트커버 (조)	1	1	
L-24-1	CMB-LA021900	Belt Cover "A"	벨트 커버 "A"	1	1	
L-24-2	DWS-AA000600	Washer For L-24-1	스토퍼 쥘 와셔	2	2	
L-24-3	DSC-BF001100	Screw (3/16" n=28)	홈볼이 납작 작은나사 (3/16" n=28)	2	2	
L-24-4	CMB-LA020500	Belt Cover "B"	벨트 커버 "B"	1	1	
L-24-5	DCL-BA001500	Rubber Collar For L-24-4	벨트 커버 "B" 고무카라	3	3	
L-24-6	DWS-AA000600	Washer For L-24-4	스토퍼 쥘 와셔	3	3	
L-24-7	DSC-BA003300	Screw (3/16" n=28)	홈볼이 냄비 작은나사 (3/16" n=28)	1	1	
L-24-8	DSC-BA003200	Screw (3/16" n=28)	홈볼이 냄비 작은나사 (3/16" n=28)	2	2	
L-24-9	CMB-LA012900	Belt Cover "D"	벨트 커버 "D"	1	1	
L-24-10	PSC-DD000100	Nail For L-24-9	목나사	2	2	
L-24-11	SC-0155-5607	Screw (9/64" n=40)	접시머리 보울트 (9/64" n=40)	1	1	
L-24-12	PSC-BA000100	Screw	솔레노이드부착고정나사	2	2	
L-24-13	PWS-AA000500	Washer	솔레노이드부착평와셔	2	2	
L-25	CST-MF000100	Thread Stand Assembly	실패꽃이 (조)	1Set	1Set	
L-26	AAC-PS000101	Bobbin Winder Assembly	실감기 (조)	1Set	1Set	
L-27	CST-BB002500	Hinge	힌지	2	2	
L-28	CST-FF000400	Rubber Hinge	힌지 고무 (대)	2	2	
L-29	CST-FD002800	Head Cushion	힌지 고무 (소)	2	2	
L-30		Nail	못	10	10	
L-31	CST-FD002500	Head Cushion "B"	힌지 고무 (중)	2	2	
L-33	DWS-AA002100	Moving Knife Tension Adjusting Washer	동메스 장력조절 와셔	4		
L-34	CAC-BJ000600	Needle Thread Inserting Gauge	실 끼기	1	1	
L-35	AST-PS000600	Knee Lifting Pad Ass'y	무릎 올림 (조)	1Set	1Set	
L-36	CST-JA002900	Oil Pan (Ass'y)	오일 팬 (조)	1Set	1Set	
L-37	91-001S-5607	Screw	목나사	3	3	

INDEX

Parts No.	Name of Parts	Page	Ref.No.
01-001A-5600	Arm. Bed	7	A-1-1
01-001A-5607	Arm. Bed	7	A-1
01-039W-1701	Spring Washer For K-6	25	K-7
01-047C-5607	Code Holder	7	A-61
06-139P-7400	Lever Feed Arm Pin	13	D-46
08-010B-3701	Plug For A-48	7	A-54
11-018M-2350	Plug (Large) For G-55	21	G-59
11-019M-2350	Tube (Large) For G-55	21	G-58
11-020A-2500	Magnetic Holder	24	J-1-1
11-020W-2500	Washer For J-1-1	24	J-1-2
11-021S-2500	Screw For J-1-1	24	J-1-3
12-0000-SE55	Synchronizer Ass'y-Servo	24	J-1-4
12-015M-2350	Cable For K-8	25	K-10
12-016M-2350	Earth Line	7	A-63
12-131A-5607	Micro Switch Ass'y	23	I-3
15-009A-5607	Collar For F-7	19	F-9
17-016B-3701	Plug For K-8	25	K-11
17-436C-7907	Tube For A-48	7	A-55
18-007B-5607	Auto Knee Litter Solenoid Assembly	25	K-8
18-015S-5607	Nut(L) For K-16	25	K-15
18-016S-5607	Nut(R) For K-12	25	K-13
18-020A-5607	Ball Joint(Left)	25	K-16
18-021A-5607	Belt Joint (Right)	25	K-12
20-016A-S100	Cable For K-1	25	K-2
20-016A-S100	Plug For K-1	25	K-3
25-004A-3200	Belt Joint Connecting Rod	25	K-14
25-005A-3100	Knee Lifting Pad Assy	25	K-17
43-027S-8130	Screw (B) For C-40-1	11	C-40-3
43-027S-8130	Screw (B) For C-40-4	11	C-40-6
60-000A-5607	Belt Cover Ass'y	27	L-24
90-001A-5607	Knee Lifter Ass'y	11	C-40
91-001S-5607	Screw	27	L-37
91-002S-S100	Bracket For K-1	25	K-5
91-027S-3000	Screw For K-8	25	K-9
91-029-S100	Screw For K-1	25	K-4
91-030S-1000	Screw For K-5	25	K-6
AAC-PS000101	Bobbin Winder Assembly	27	L-26
AFA-PS000900	Spring Holder For D-21	13	D-18
AFA-PS000900	Spring Holder For D-21	15	D-78
ALB-PS002500	Oil Tank Ass'y	22	H-1
ALB-PS002600	Oil Tank Presser Ass'y	22	H-3
APM-PS001300	Knee Lifting Lever Ass'y	11	C-24
APM-PS001400	Roller Ass'y For Knee Rod	11	C-39
ARB-PS000900	Reverse Button Ass'y	23	I-11
AST-PS000600	Knee Lifting Pad Ass'y	27	L-35
ATA-PS004600	Thread Tension Control Ass'y (T)	7	A-40
ATA-PS004700	Thread Tension Control Ass'y (S)	7	A-42
CAC-BJ000600	Needle Thread Inserting Gauge	27	L-34
CAC-JB000100	Oiler	27	L-18
CAC-MA000500	Head Cover	27	L-15
CAC-MH000100	Accessories Bag	27	L-1
CFA-BB001400	Feed Regulator Bracket	13	D-7
CFA-BB001500	Reverse Lever Stopper (Lower)	15	D-87
CFA-BG000100	Hook For D-21	15	D-66
CFA-CA001500	Reverse Link	15	D-75
CFA-CB001100	Reverse Solenoid Crank	15	D-76
CFA-CB001400	Reverse Crank	15	D-71
CFA-CM001700	Reverse Feed Control Lever	15	D-80
CFA-CM002100	Reverse Feed Control Lever	13	D-22
CFA-CQ002300	Feed Regulator Control Plate	13	D-12
CFA-DF000900	Feed Regulator	13	D-4

Parts No.	Name of Parts	Page	Ref.No.
CFA-FZ000100	Reverse Lever Stopper (Upper) Rubber	15	D-86
CFA-KC001100	Feed Regulator Lever Shaft	13	D-16
CFA-KC001200	Feed Regulator Lever Shaft	15	D-70
CFA-KJ001300	Feed Regulator Control Screw	13	D-10
CFA-LA000300	Reverse Solenoid Cover	15	D-95
CGA-GA004900	Needle Plate	7	A-23
CGA-GA005000	Needle Plate	7	A-24
CGA-GB002300	Feed Dog	15	D-64
CGA-GC002900	Sub Presser Foot	11	C-7
CGA-GC005900	Upper Feed Presser Foot	19	F-23
CHB-BA001300	Hook Base	17	E-23
CHB-BF000100	Pinch Sleeve (Upper)	17	E-33
CHB-BF000200	Pinch Sleeve (Lower)	17	E-34
CHB-CA000100	Opener Link	17	E-36
CHB-CM000100	Opener Lever	17	E-39
CHB-FC000300	Hook Base Gasket	17	E-48
CHB-HN000101	Bobbin Case Opener	17	E-43
CHB-KC000400	Opener Lever Stud	17	E-40
CHB-LB000100	Hook Base Cover	17	E-49
CHK-BJ000300	Auto Reverse Lever	15	D-82
CHK-HA002400	Rotary Hook (Ass'y) (HSH-12-15MM(5)TBA)	17	E-24
CHK-HA002500	Rotary Hook (Ass'y) (HSH-12-15MM(5))	17	E-25
CHK-HB001000	Bobbin (AL)	17	E-26
CHK-HB001000	Bobbin (AL)	27	L-6
CLB-BF000400	Holder For H-7	22	H-8
CLB-BF000400	Holder For Bed Oil Supply Wick	22	H-29
CLB-BF001100	Holder For H-9	22	H-10
CLB-BG003800	Felt For Upper Thread Supply	7	A-36-1
CLB-BG004100	Wick Supporter For F-57	19	F-58
CLB-BG004200	Wick Holder	13	D-31
CLB-BH000400	Holder For H-13	22	H-14
CLB-BH000400	Hook For H-27	22	H-28
CLB-BJ001900	Oil Cover	22	H-18
CLB-BJ002100	Oil Cover Presser	22	H-19
CLB-FC000200	Gasket For Oil Tank	22	H-2
CLB-JB001600	Oil Supply Tank For Hook	22	H-33
CLB-JD000100	Felt For E-2	17	E-3
CLB-JD000100	Felt For E-4	17	E-5
CLB-JG000300	Hose For H-6	22	H-7
CLB-JG000300	Hose For H-12	22	H-13
CLB-JG000300	Hose For H-26	22	H-27
CLB-JG000600	Hose For E-24, E-25	22	H-37
CLB-JL000800	Oil Cap For B-6	9	B-27
CLB-JL000800	Wick For B-35	9	B-37
CLB-JL000800	Oil Cap For B-43	9	B-45
CLB-JL000800	Felt For D-28	13	D-29
CLB-JL003000	Felt For Take-Up Lever Oil Tank	22	H-17
CLB-JL003000	Felt For E-2	22	H-23
CLB-JL003000	Felt For E-4	22	H-25
CLB-JL003000	Felt For D-30	22	H-42
CLB-JL006400	Felt For B-39	22	H-21
CLB-JL006500	Felt (Upper Thread)	7	A-35
CLB-JL006500	Upper Thread Oil Felt	27	L-14
CLB-JL006600	Felt (B) For B-10	9	B-28
CLB-JL006800	Feed Bar Fork Felt	15	D-60
CLB-JL007000	Cap Felt For E-2	22	H-22
CLB-JL009000	Felt For F-13	19	F-14
CLB-JL009000	Felt For F-15	19	F-16
CLB-JL009500	Felt For B-12	9	B-29
CLB-JN000900	Oil Gauge	22	H-31
CLB-JP003200	Oil Joint (1)	22	H-36

Parts No.	Name of Parts	Page	Ref.No.
CLB-JP003300	Oil Joint (2)	22	H-38
CLF-BA001000	Feed Bar	15	D-56
CLF-BB000800	Feed Bar Fork	15	D-59
CLF-BJ001500	Slide Guide Plate	13	D-41
CLF-BK000500	Slide Block	13	D-40
CLF-CA000800	Lever Feed Connecting Link	13	D-43
CLF-CB001500	Lever Feed Arm	13	D-44
CLF-CC002000	Feed Cam Connecting Rod	13	D-38
CLF-CC002100	Feed Regulator Connecting Rod	13	D-24
CLF-DC001100	Vertical Feed Eccentric Cam	17	E-59
CLF-DC002500	Feed Eccentric Cam	13	D-35
CLF-KF001200	Feed Bar Shaft	15	D-57
CLF-KK000500	Feed Regulator Shaft	13	D-28
CLF-KZ000800	Feed Rock Shaft	15	D-54
CLS-BA000200	Safety Clutch Collar	17	E-16-3
CLS-BJ000600	Bearing Presser	17	E-14
CLS-BJ001000	Safety Clutch Disc	17	E-16-4
CLS-BJ001100	Safety Clutch Collar Washer	17	E-16-11
CLS-CS000200	Rock Ratchet	17	E-53
CLS-KF000700	Lower Shaft	17	E-1
CMB-BJ004600	Stopper For Slide Plate (R)	7	A-27
CMB-BJ004800	Bobbin Window	7	A-32
CMB-BJ006600	Machine Number Plate	7	A-30
CMB-GH000900	Slide Plate (L)	7	A-22
CMB-GH001000	Slide Plate (R)	7	A-26
CMB-HK002700	Top Cover Thread Guide	7	A-10
CMB-HK005300	Arm Thread Guide Plate (U)	7	A-12
CMB-HK005500	Felt Holder For Upper Thread Supply	7	A-36
CMB-LA012900	Belt Cover "D"	27	L-24-9
CMB-LA020100	Thread Take Up Cover	7	A-6
CMB-LA020100	Washer For A-56	7	A-57
CMB-LA020300	Top Cover	7	A-8
CMB-LA020400	Back Cover Plate	7	A-19
CMB-LA020500	Belt Cover "B"	27	L-24-4
CMB-LA021900	Belt Cover "A"	27	L-24-1
CMB-LB008100	Face Plate	7	A-2
CMB-LD004000	Model Mark	7	A-17
CMB-LD004100	Model Mark	7	A-18
CMB-LD004200	Brand Mark	7	A-16
CNB-BC000700	Needle Bar Frame	19	F-49
CNB-BF001800	Needle Bar Clamp	9	B-35
CNB-BK001200	Walking Bar Guide Plate	19	F-25
CNB-BK001300	Guide For Needle Bar Frame	19	F-53
CNB-CB000500	Needle Bar Frame Shaft Crank	19	F-47
CNB-CD001100	Needle Bar Block	19	F-48
CNB-HK001500	Needle Bar Thread Guide	9	B-31
CMB-HK007500	Arm Thread Guide Plate (L)	7	A-14
CNB-KA002000	Needle Bar	9	B-30
CNB-KF000500	Needle Bar Frame Driving Shaft	19	F-46
CPB-BB000900	Presser Bar Guide Bracket	11	C-13
CPB-BJ001500	Plate for Roller Guide	11	C-20
CPB-BK000400	Guide Bar Bracket Roller	11	C-17
CPB-CL000500	Roller For Presser Bracket	11	C-15-2
CPB-CM000900	Presser Bar Lifter	11	C-22
CPB-KB000901	Presser Bar	11	C-1
CPM-BH001000	Knee Lifter Rod	11	C-36
CPM-CA002000	Knee Lifter Lever Spring	11	C-30
CPM-CA002000	Knee Lifter Link	11	C-31
CPM-CL000900	Roller For Knee Lifter Link	11	C-33
CRB-BJ000600	Micro Switch Base	23	I-14
CRB-FD000100	Insulated Rubber	23	I-9

INDEX

Parts No.	Name of Parts	Page	Ref.No.
CRB-KC000300	Actuator Bar	23	I-6
CRB-LC000100	Button Case	23	I-1
CST-BB002500	Hinge	27	L-27
CST-BB004300	Lever Shaft Bracket	11	C-40-8
CST-CM000200	Knee Lifter Lock Bar Lever	11	C-40-1
CST-CR000400	Head Rest	27	L-23
CST-CR000800	Head Rest	27	L-22
CST-FD022500	Head Cushion "B"	27	L-31
CST-FD022800	Head Cushion	27	L-29
CST-FF000400	Rubber Hinge	27	L-28
CST-JA002900	Oil Pan (Ass'y)	27	L-36
CST-JB000100	Oil Tank	27	L-19
CST-KC001400	Knee Lifting Rock Bracket Shaft	11	C-40-9
CST-MF000100	Thread Stand Assembly	27	L-25
CTA-BJ001900	Stopper For Thread Take-Up Spring	7	A-46
CTH-BF000300	Take Up Lever Holder	9	B-43
CTH-CC001400	Needle Bar Crank	9	B-38
CTH-HJ002000	Thread Take-Up Lever	9	B-39
CTR-BA000200	Tension Release Base	11	C-11
CTR-BJ001700	Thread Tension Release (Ass'y)	11	C-9
CTR-BQ000300	Pipe For A-38	7	A-39
CTR-KC000600	Thread Tension Release	7	A-38
CTT-BB002300	Reverse Solenoid Bracket	15	D-90
CTT-BB002300	Bracket For G-55	21	G-52
CTT-BB003200	Moving Knife Bracket	21	G-11
CTT-BF001100	Holder For Stopper Pin	21	G-33
CTT-BJ003800	Thread Catcher	21	G-6
CTT-CA001100	Thread Trimming Rock Link	21	G-16
CTT-CC001400	Joint Connection Stud	21	G-38
CTT-CL000300	Roller For Thread Trimming Cam Roller	21	G-24
CTT-CM002000	Clutch Lever	21	G-49
CTT-CM003200	Thread Trimming Lever	21	G-42
CTT-DD000300	Thread Trimming Cam	21	G-50
CTT-FB000200	Cushion Rubber	21	G-41
CTT-KC000800	Thread Trimming Rock Link Shaft	21	G-13
CTT-KZ000200	Moving Knife Shaft (R)	21	G-1
CTT-NA001800	Moving Knife	21	G-2
CTT-NB001200	Fixed Knife	21	G-7
CTT-NB001200	Fixed Knife	27	L-13
CUF-CA001500	Upper Feed Lifting Connecting Link	19	F-19
CUF-CA001700	Link For Upper Feed Foot	19	F-20
CUF-CA001800	Walking Bar Driving Link	19	F-21
CUF-CA002000	Needle Bar Rock Shaft Link	19	F-40
CUF-CB001900	Upper Feed Lifting Eccentric Wheel Crank	19	F-5
CUF-CB002800	Needle Bar Rock Crank	19	F-31
CUF-CC001500	Upper Feed Lifting Rod	19	F-4
CUF-CC002200	Connecting Rod For Needle Bar Frame Driving Shaft	19	F-39
CUF-CD000200	Walking Bar Guide Block	19	F-56
CUF-CR000100	Walking Bar	19	F-22
CUF-DC000500	Upper Feed Lifting Eccentric Cam	19	F-1
CUF-KF000300	Walking Foot Pressure Adjusting Pole	19	F-28
CUF-KZ000501	Upper Feed Driving Shaft	19	F-12
CUF-KZ000700	Upper Feed Lifting Adjusting Shaft	19	F-7
CUS-DA002800	Link Cam	9	B-3
CUS-KC002900	Upper Shaft	9	B-2
DBS-DA015600	Feed Rock Shaft Bushing (Rear)	13	D-48
DBS-DA022400	Presser Bar Bushing	11	C-2
DBS-DA027600	Rotary Hook Bushing (Lower)	17	E-31
DBS-DA028400	Upper Shaft Bushing (M)	9	B-12
DBS-DA028500	Feed Rock Shaft Bushing (Front)	15	D-52
DBS-DA028600	Lower Shaft Bushing (Front)	17	E-2

Parts No.	Name of Parts	Page	Ref.No.
DBS-DA028700	Lower Shaft Bushing (Middle)	17	E-4
DBS-DB004200	Needle Bar Rock Shaft Bushing (F)	19	F-45
DBS-DB004300	Needle Bar Rock Shaft Bushing (R)	19	F-44
DBS-DB004400	Moving Knife Shaft Bushing (R)	21	G-44
DBS-DB006200	Upper Feed Shaft Bushing (Front)	19	F-13
DBS-DB006300	Upper Feed Shaft Bushing (Rear)	19	F-15
DBS-DB006700	Upper Feed Lifting Adjusting Shaft Bushing	19	F-8
DBS-DB008500	Upper Shaft Bushing (F)	9	B-10
DBS-DB008600	Rotary Hook Bushing (Upper)	17	E-29
DCL-AA002800	Collar For Feed Regulator	17	E-62
DCL-AA005400	Stopper Collar For D-28	13	D-33
DCL-AA005800	Feed Rock Shaft Collar	15	D-50
DCL-AA005900	Moving Knife Shaft Collar	21	G-4
DCL-AA008500	Upper Shaft Collar	9	B-24
DCL-AA008600	Collar For C-24	11	C-27
DCL-AA008700	Lever Shaft Stopper Collar	11	C-40-4
DCL-AB002300	Bearing Bushing (Rear)	17	E-10
DCL-AB003500	Bearing Bushing (Middle)	17	E-6
DCL-BA001500	Rubber Collar For L-24-4	27	L-24-5
DCL-BB002400	Thrust Ring	9	B-9
DGR-AB001100	Spiral Gear	17	E-17
DGR-AB001200	Rotary Hook Gear	17	E-20
DPK-CA000600	Rubber Cap (L)	7	A-29
DPK-CA002600	Rubber Cap (S)	7	A-21
DPK-CB001100	Bed Oil Cap	22	H-24
DPK-CB001900	Reverse Button Cable Bushing	23	I-10
DPK-CY001300	Cap For Oil Tank Pipe	22	H-4
DPL-AA001400	Pulley	9	B-21
DPL-BB000500	Timing Belt Pulley (Upper)	9	B-14
DPL-BB000700	Safety Clutch Belt Pulley	17	E-16-1
DPN-AA003500	Reverse Button Actuator Pin	23	I-4
DPN-AA008700	Pin For D-12	13	D-14
DPN-AA008801	Needle Bar Crank Shaft	9	B-6
DPN-AA013200	Hinge Pin For B-39	9	B-40
DPN-AA015000	Feed Regulator stud	13	D-1
DPN-AA015100	Connecting Pin For D-4	13	D-5
DPN-AA015200	Slide Block Shaft	13	D-39
DPN-AB000200	Taper Pin	19	F-47-1
DPN-AB000400	Hinge Pin For Needle Bar Frame	19	F-50
DPN-AD002400	Pin For D-24	13	D-25
DPN-BA000900	Hook For D-18	13	D-19
DPN-BC005000	Ratchet Button	17	E-56
DPN-BC005100	Lever Shaft Guide Pin	11	C-40-10
DSC-AA000700	Screw (1/4" n=28)	19	F-6
DSC-AA002800	Screw (3/16" n=32)	15	D-72
DSC-AA003500	Screw (M8 x 1.25)	7	A-33
DSC-AC002700	Screw (1/4" n=40)	13	D-9
DSC-BA000700	Screw (3/16" n=32)	15	D-67
DSC-BA000700	Screw (3/16" n=32)	15	D-94
DSC-BA000700	Screw (3/16" n=32)	15	D-97
DSC-BA000700	Screw (3/16" n=32)	22	H-20
DSC-BA001000	Screw (11/64" n=40)	15	D-55
DSC-BA001000	Screw (11/64" n=40)	19	F-24
DSC-BA001100	Screw (11/64" n=40)	19	F-55
DSC-BA001100	Screw For I-6	23	I-7
DSC-BA001300	Screw (1/4" n=28)	13	D-45
DSC-BA001300	Screw (1/4" n=28)	15	D-92
DSC-BA001300	Screw (1/4" n=28)	19	F-32
DSC-BA001600	Screw (3/16" n=32)	11	C-14
DSC-BA003200	Screw (3/16" n=28)	27	L-24-8
DSC-BA003300	Screw (3/16" n=28)	27	L-24-7

Parts No.	Name of Parts	Page	Ref.No.
DSC-BB001400	Screw (11/64" n=40)	21	G-3
DSC-BB001400	Screw (11/64" n=40)	21	G-9
DSC-BB001800	Screw (11/64" n=40)	7	A-25
DSC-BB002000	Screw (9/64" n=40)	15	D-61
DSC-BB002000	Safety Clutch Collar Washer Screw	17	E-16-12
DSC-BB003700	Screw (9/64" n=40)	17	E-15
DSC-BC000200	Screw (9/64" n=40)	7	A-13
DSC-BC000200	Screw (9/64" n=40)	7	A-15
DSC-BC000200	Screw (9/64" n=40)	7	A-37
DSC-BC001100	Screw (3/16" n=28)	11	C-21
DSC-BF000400	Screw (15/64" n=28)	15	D-73
DSC-BF000800	Screw (15/64" n=28)	9	B-22
DSC-BF001000	Screw (11/64" n=40)	11	C-12
DSC-BF001000	Screw (11/64" n=40)	11	C-19
DSC-BF001000	Screw (11/64" n=40)	19	F-26
DSC-BF001100	Screw (3/16" n=28)	27	L-24-3
DSC-BF001900	Screw (3/16" n=28)	13	D-13
DSC-BF002600	Screw (9/64" n=40)	22	H-34
DSC-BF003500	Screw (5/16" n=28)	19	F-30
DSC-BF003600	Screw (11/64" n=40)	15	D-88
DSC-BF003700	Screw (9/32" n=28)	9	B-4
DSC-BF003800	Screw (9/64" n=40)	11	C-8
DSC-BF010100	Screw (9/64" n=40)	17	E-50
DSC-BF011500	Screw (9/32" n=28)	9	B-5
DSC-BF012900	Screw (15/64" n=28)	17	E-35
DSC-BF015500	Screw (1/8" n=44)	15	D-65
DSC-BF015600	Oil Insert Screw	22	H-16
DSC-BG000100	Screw (9/64" n=40)	22	H-32
DSC-BG000200	Screw (5/16" n=24)	9	B-23
DSC-BJ000200	Screw (11/64" n=40)	7	A-28
DSC-BJ000200	Screw (11/64" n=40)	7	A-44
DSC-BJ000200	Screw (11/64" n=40)	7	A-60
DSC-BJ000200	Screw (11/64" n=40)	13	D-26
DSC-BJ000200	Screw (11/64" n=40)	13	D-42
DSC-BJ000200	Screw (11/64" n=40)	23	I-15
DSC-BJ000300	Screw (9/64" n=40)	9	B-36
DSC-BJ000400	Screw (11/64" n=40)	7	A-9
DSC-BJ000400	Screw (9/64" n=40)	7	A-45
DSC-BJ000400	Screw (11/64" n=40)	22	H-5
DSC-BJ000400	Screw (11/64" n=40)	23	I-2
DSC-BJ000600	Screw (15/64" n=28)	15	D-63
DSC-BJ001100	Screw (9/64" n=40)	7	A-7
DSC-BJ001100	Screw (9/64" n=40)	7	A-47
DSC-BJ001100	Screw (9/64" n=40)	19	F-59
DSC-BJ001100	Screw (9/64" n=40)	22	H-30
DSC-BJ001100	Screw	23	I-17
DSC-BJ001400	Screw (9/64" n=40)	7	A-20
DSC-BJ001400	Screw (9/64" n=40)	7	A-62
DSC-BJ001400	Screw (9/64" n=40)	17	E-45
DSC-BJ001400	Screw (9/64" n=40)	22	H-11
DSC-BJ001400	Screw (9/64" n=40)	22	H-15
DSC-BJ001600	Screw (3/32" n=56)	7	A-36-2
DSC-BJ002000	Screw For F-1	19	F-2
DSC-BJ002200	Screw (3/32" n=56)	9	B-32
DSC-BJ002300	Screw (9/64" n=40)	7	A-5
DSC-BJ004300	Screw (9/64" n=40)	9	B-34
DSC-BJ004400	Screw For Hook Base	17	E-52
DSC-BJ004400	Screw For F-40	19	F-41
DSC-BJ004600	Screw (1/8" n=44)	13	D-32
DSC-BJ005300	Screw (A) For F-53	19	F-54
DSC-BJ005500	Screw (M2 x 0.4)	23	I-3-2

INDEX

Parts No.	Name of Parts	Page	Ref.No.
DSC-CA000500	Screw (1/4" n = 40)	9	B-25
DSC-CA000500	Screw (1/4" n = 40)	15	D-51
DSC-CA000500	Screw (1/4" n = 40)	17	E-63
DSC-CA000800	Screw (15/64" n = 28)	9	B-11
DSC-CA000800	Screw (15/64" n = 28)	9	B-13
DSC-CA000800	Screw (15/64" n = 28)	11	C-3
DSC-CA000800	Screw (15/64" n = 28)	13	D-49
DSC-CA000800	Screw (15/64" n = 28)	15	D-53
DSC-CA000800	Screw (15/64" n = 28)	17	E-61
DSC-CA000800	Screw (15/64" n = 28)	19	F-52
DSC-CA001500	Screw (15/64" n = 28)	9	B-41
DSC-CA001600	Screw (11/64" n = 40)	11	C-39-4
DSC-CA001600	Screw (11/64" n = 40)	13	D-6
DSC-CA001600	Screw (11/64" n = 40)	17	E-8
DSC-CA003000	Screw (3/16" n = 32)	17	E-41
DSC-CA003300	Screw For Clutch Lever Pin	21	G-47
DSC-CA004200	Screw (M10 x 1.25)	17	E-16-6
DSC-CA004800	Screw (11/64" n = 40)	17	E-7
DSC-CB000100	Screw G-13	21	G-14
DSC-CB000100	Screw (M4)	21	G-45
DSC-CB000400	Screw (1/4" n = 40)	9	B-7
DSC-CB000400	Screw (1/4" n = 40)	9	B-17
DSC-CB000400	Screw (1/4" n = 40)	11	C-28
DSC-CB000400	Screw (1/4" n = 40)	15	D-84
DSC-CB000400	Screw (1/4" n = 40)	17	E-12
DSC-CB000400	Screw (1/4" n = 40)	17	E-16-8
DSC-CB000400	Screw (1/4" n = 40)	17	E-18
DSC-CB000400	Screw (1/4" n = 40)	17	E-55
DSC-CB000400	Screw (1/4" n = 40)	21	G-51
DSC-CB000500	Screw (15/64" n = 28)	13	D-8
DSC-CB000500	Screw (15/64" n = 28)	13	D-20
DSC-CB000500	Screw (15/64" n = 28)	13	D-34
DSC-CB000500	Screw (15/64" n = 28)	13	D-36
DSC-CB000900	Screw (15/64" n = 28)	13	D-2
DSC-CB001000	Screw (1/4" n = 40)	9	B-8
DSC-CB001000	Screw (1/4" n = 40)	17	E-21
DSC-CB001000	Screw (1/4" n = 40)	17	E-22
DSC-CB001000	Screw (1/4" n = 40)	17	E-60
DSC-CB001800	Screw (1/4" n = 40)	9	B-16
DSC-CB001800	Screw (1/4" n = 40)	13	D-23
DSC-CB001800	Screw (1/4" n = 40)	15	D-83
DSC-CB001800	Screw (1/4" n = 40)	17	E-11
DSC-CB001800	Screw (1/4" n = 40)	17	E-16-7
DSC-CB001800	Screw (1/4" n = 40)	17	E-19
DSC-CB001800	Screw (1/4" n = 40)	17	E-54
DSC-FA006200	Stud Screw For Reverse Lever Stopper (Upper)	15	D-85
DSC-FA012700	Screw For Moving Knife Shaft Connecting Joint	21	G-15
DSC-FA013700	Stud Screw For D-71	15	D-74
DSC-FA013800	Stud Screw For D-76	15	D-91
DSC-FA013900	Stud Screw For D-75	15	D-77
DSC-FA014000	Stud Screw For Clutch Lever	21	G-46
DSC-FA014100	Stud Screw For Rod End	21	G-21
DSC-FA017200	Screw (Upper) For A-2	7	A-3
DSC-FA019500	Stud Screw For C-31	11	C-32
DSC-FA019600	Stud Screw For Knee Lifter Roller	11	C-34
DSC-FA019700	Stud For Knee Lifter Connecting Rod	11	C-37
DSC-FA019800	Needle Bar Rock Crank Stud	19	F-33
DSC-FA020200	Stud Screw For D-24	13	D-27
DSC-FF001900	Stud Screw For Connecting Link	19	F-17
DSC-FG002000	Roller Stud Screw	11	C-15-1
DSC-FH001100	Stud Screw For C-24	11	C-25

Parts No.	Name of Parts	Page	Ref.No.
DSC-GA000400	Stud Screw For Thread Trimming Cam	21	G-25
DSC-GA000901	Stud Screw Needle Bar Rock Shaft Link	19	F-42
DSC-GB000300	Screw For Stopper Pin	21	G-18
DSC-GB000401	Stud Screw For Opener Link	17	E-37
DSC-GF000100	Screw (A) For C-40-1	11	C-40-2
DSC-HA000500	Screw (9/16" n = 20)	11	C-4
DSC-HB002300	Hinge Pin For C-22	11	C-23
DSC-HD000200	Adjusting Screw For Return Spring	21	G-28
DSC-HD000200	Hook For Return Spring	21	G-31
DSC-HD000600	Adjusting Screw For D-66	15	D-68
DSC-HZ001700	Oil Adjusting Screw	17	E-47
DSD-AA002400	Reverse Solenoid (Ass'y)	15	D-93
DSD-AA002500	Thread Trimming Solenoid (Ass'y)	21	G-55
DSD-AA003400	Tension Release Solenoid Ass'y	7	A-48
DSN-AA000600	Nut (3/16" n = 32)	11	C-38
DSN-AA000600	Nut (3/16" n = 32)	15	D-89
DSN-AA000600	Nut (3/16" n = 32)	17	E-38
DSN-AA000700	Nut (15/64" n = 28)	7	A-11
DSN-AA000900	Nut (11/64" n = 40)	11	C-35
DSN-AA000900	Nut (11/64" n = 40)	15	D-69
DSN-AA000900	Nut (11/64" n = 40)	21	G-29
DSN-AA000900	Nut (11/64" n = 40)	21	G-32
DSN-AA000900	Nut (11/64" n = 40)	21	G-48
DSN-AA001300	Nut (1/4" n = 40)	19	F-11
DSN-AA001300	Nut For F-17	19	F-18
DSN-AA001400	Nut For Stopper Pin	21	G-20
DSN-AA001400	Nut For G-21	21	G-23
DSN-AA001400	Nut For G-25	21	G-27
DSN-AA001400	Nut (R) For G-36	21	G-37
DSN-AA002200	Nut (9/32" n = 28)	19	F-38
DSN-AA002600	Nut (L) For G-39	21	G-40
DSN-AA003000	Nut (5/16" n = 24)	19	F-43
DSN-AA003200	Nut For E-47	17	E-46
DSN-AA004400	Nut	22	H-39
DSN-CC000600	Nut (9/16" n = 20)	11	C-5
DSN-CY001100	Needle Bar Rock Crank Holder	19	F-35
DSP-AA006400	Spring For D-12	13	D-15
DSP-AA006500	Return Spring For Stopper Pin	21	G-17
DSP-AA007200	Ratchet Button Spring	17	E-57
DSP-AA009400	Spring For F-28	19	F-29
DSP-AA009500	Return Spring For C-9	11	C-10
DSP-AA009600	Safety Clutch Spring	17	E-16-5
DSP-AA011200	Spring For A-49	7	A-51
DSP-AA011400	Spring For C-4	11	C-6
DSP-AB003600	Thread Trimming Return Spring	21	G-30
DSP-AB005000	Return Spring For Reverse Feed Lever	13	D-21
DSP-AC002200	Actuator Bar Spring	23	I-8
DSP-AC004900	Reverse Lever Spring	15	D-79
DSP-AC005500	Reverse Button Return Spring	23	I-12
DSP-AC006700	Return Spring For C-40-9	11	C-40-7
DSP-BA002600	Bobbin Tension Spring	17	E-28
DSR-AK000500	Timing Belt Pulley Ring	9	B-15
DSR-AK000500	Safety Clutch Belt Pulley Ring	17	E-16-9
DTC-AH000100	Cable Holder	23	I-16
DTC-AH001000	Cable Holder	7	A-59
DWS-AA000600	Washer For L-24-1	27	L-24-2
DWS-AA000600	Washer For L-24-4	27	L-24-6
DWS-AA001100	Washer For C-17	11	C-18
DWS-AA001100	Washer For F-26	19	F-27
DWS-AA001200	Washer For D-57	15	D-58
DWS-AA002100	Washer For Moving Knife Tension Adjusting	21	G-10

Parts No.	Name of Parts	Page	Ref.No.
DWS-AA002100	Moving Knife Tension Adjusting Washer	27	L-33
DWS-AA002200	Washer For E-52	17	E-51
DWS-AA002900	Washer (B) For F-31	19	F-36
DWS-AA003800	Washer For D-61	15	D-61-1
DWS-AA003800	Opener Washer	17	E-44
DWS-AA006300	Washer For F-7	19	F-10
DWS-AA010700	Washer (A) For F-31	19	F-34
DWS-AA013300	Washer For D-22	13	D-17
DWS-AA013300	Washer For D-80	15	D-81
DWS-AA014400	Washer For D-61	15	D-62
DWS-AA017000	Washer For C-24	11	C-26
DWS-AA017100	Spring Washer For F-31	19	F-37
DWS-AA017400	Gasket For H-38	22	H-40
DWS-CA000100	Washer For Stopper Pin	21	G-19
DWS-CA000100	Washer For Rod End	21	G-22
DWS-CA000100	Washer For G-25	21	G-26
DWS-CB000600	Washer (Upper) For A-2	7	A-4
PBR-AA006000	Bearing (6904NR)	17	E-9
PBR-AA007400	Bearing (6004NR)	17	E-13
PBR-AA008500	Bearing (6204 ZZ)	9	B-20
PBR-AD000900	Safety Clutch Driving Ball	17	E-16-2
PBR-BA002800	Needle Bearing	13	D-37
PBR-BA002800	Needle Bearing	19	F-3
PBR-GB000100	Rod End (R) MTR BNF-5	21	G-36
PBR-GB000500	Rod End (L) MTR BNF-5L	21	G-39
PBT-BB000200	Timing Belt	9	B-18
PPK-BA001600	O-Ring For D-10	13	D-11
PPN-AD000100	Pin For A-30	7	A-31
PSC-AA000200	Screw (M6 x 1.0)	11	C-40-5
PSC-AC000600	Screw (M6)	21	G-35
PSC-AC001200	Screw (M6)	21	G-54
PSC-AC001500	Screw (11/64" n = 40)	21	G-12
PSC-AC006100	Screw (M5 x 0.8)	7	A-56
PSC-AC006100	Screw (M5 x 0.8)	21	G-43
PSC-BA000100	Screw	27	L-24-12
PSC-CB000200	Screw (3/16" n = 28)	17	E-30
PSC-CB000200	Screw (3/16" n = 28)	17	E-32
PSC-CB000200	Screw (M4)	21	G-5
PSC-DD000100	Nail For L-24-9	27	L-24-10
PSN-AA002200	Nut For A-33	7	A-34
PSN-AA003600	Nut For E-16-7	17	E-16-10
PSR-AB000200	Stopper Ring	9	B-19
PSR-AC000100	E-Ring (ø 9)	23	I-5
PSR-AC000300	E-Ring (ø 3)	23	I-13
PSR-AC000400	E-Ring (ø 3)	17	E-58
PSR-AC000500	E-ring (ø 6)	13	D-47
PSR-AC000600	E-Ring (ø 8)	11	C-29
PSR-AC000900	E-Ring (ø 7)	13	D-3
PTC-AG000100	Band Clip	27	L-20
PTL-AB000300	Cable Holder (5N)	7	A-58
PTL-AB000100	L-Wrench (2mm)	27	L-8
PTL-AB000200	L-Wrench (5mm)	27	L-12
PTL-AB000300	L-Wrench (2.5mm)	27	L-9
PTL-AB000400	L-Wrench (4mm)	27	L-11
PTL-AB000500	L-Wrench (3mm)	27	L-10
PTL-BA000100	Driver (Large)	27	L-2
PTL-BA000200	Driver (Middle, Small)	27	L-3
PTL-BA000200	Oil	27	L-17
PWS-AA000500	Washer	27	L-24-13
PWS-CA000500	Washer For G-33	21	G-34
PWS-CA000500	Spring Washer For G-52	21	G-53

