



---

# PARTS BOOK

---

## KM-2310U

모터직결형, 고속 1분침 자동급유  
본봉 자동사절 재봉기

Direct Drive, High Speed,  
1-Needle Automatic Lubrication  
Lock Stitch Machine with  
An Automatic Thread Trimmer

PME-100610

# Information

## A. Parts Book 구성

### Structure of Part Book

① **A** Arm, Bed & Machine Body Mechanism  
팔, 침대 및 의장품 관계

②

③

④ ⑤ ⑥ ⑦ ⑧ ⑨

Ref. No.	Parts No.	Note	Name of Parts	품명	Q'ty	Assembly No.
A-1	01-12841-03		Arm	어ーム	1	
A-2	01-10073-06		Bed	침대	1	
A-4	01-02120-00		Face Plate	면판	1	
A-5	01-02044-12H		Face Plate Gasket	면판 가스켓	1	
A-6	01-1174-4122		Screw(L)104*mm2	볼트	10	
A-7	01-11011-123D		Rubber Cap For Face Plate	면판 고무캡	2	
A-9	01-00194-123D		Caution S/Screw	경고 스크류	1	
A-8	01-011973-00		Threading Lower Cover	실링기 하부	1	
A-10	01-02020-00		Screw(S)104*mm2	볼트(S)104*mm2	1	
A-11	01-01746-00		Bed Cover(L)	침대 커버(좌)	1	
A-12	01-01441-123H		Bed Cover Gasket(L)	침대 커버 가스켓(좌)	1	
A-13	01-02643-123D		Screw(L)104*mm2	볼트(S)104*mm2	14	
A-13-1	45-0244-1000		Washer	와셔	2	
A-14	01-01750-00		Bed Cover(S)	침대 커버(우)	1	
A-15	01-01744-123H		Bed Cover Gasket(S)	침대 커버 가스켓(우)	1	
A-16	440211-100H		Tank Rubber Cap	고유 탱크 고무캡	1	
A-17	01-0274-123D		Thread Guide with Three Poles	세극용 실링 가이드	15Set	
A-19	01-02101-123D		Thread Guide(L)	실링 가이드(좌)	1	
A-20	01-02102-123D		Thread Guide(R)	실링 가이드(우)	3	
A-21	01-01000-123D		Thread Guide(S)	실링 가이드	1	
A-22	01-01643-00		Arm Thread Guide Assy	어ーム 실링 가이드 어셈블리	1	
A-23	11-01750-750D		Nut	너트	1	
A-24	01-02101-123H		Thread Guide(L)	실링 가이드(좌)	1	
A-25	010270-100H		Silicon Tank Assy	실리콘 탱크 어셈블리	15Set	
A-26	010206-100H		Silicon Tank	실리콘 탱크	1	
A-27	010206-100H		Silicon Oil Window	실리콘 유량 창	1	
A-28	010240-100H		Silicon Part	실리콘 부품	1	
A-29	01-13053-00		Part for Silicon Oil Supply	실리콘 기름 공급 부품	1	
A-30	01-01643-00		Screw(L)104*mm2	볼트(S)104*mm2	1	
A-31	04-0241-123D		Arm Upper Part Rubber Cap	어ーム 상부 고무 캡	2	
A-33	04-0210-123H		Needle Bar Rubber Cap	바늘봉 고무 캡	1	
A-34	01-04210-142L		Rubber Cap(L)	고유 고무캡(좌)	4	
A-35	44-02110-7400		Rubber Cap(S)	고유 고무캡(우)	7	
A-36	01-01750-123H		Bed Rubber	침대 고무	1	
A-37	01-01917-00		Welder (Sticker)(H)	인쇄 스티커-수용용	1	
A-38	01-01918-00		M Welder (Sticker)(M)	인쇄 스티커-일반용	1	
A-39	01-01919-00		L Welder (Sticker)(L)	인쇄 스티커-대형용	1	
A-40	01-01920-00		K Welder (Sticker)(K)	인쇄 스티커-대형용	1	
A-41	01-02110-123H		Tap Cover	타프 커버	2	
A-42	01-02114-123H		Tap Cover	타프 커버	1	
A-43	41-0114-123H		Silobin Winder Assy	실링기 어셈블리	15Set	
A-44	41-02015-100H		Silobin Winder (Base Assy)	실링기 베이스 어셈블리	1	
A-45	41-0205A-123H		Silobin Winder (Shaft)	실링기 구동축	1	
A-46	01-02060-00	S. Other	Sticker(S)	인쇄 스티커-중소용	1	
A-47	01-0102-750D		Screw(S)	볼트(S)	1	
A-48	41-02061-100H		Silobin Winder	실링기 부품	1	
A-49	01-0104-550T		Screw(L)104*mm2	볼트(S)	2	
A-50	41-02062-100H		Silobin Winder Action Ring	실링기 작동링	1	
A-51	41-02063-100H		Silobin Winder Shaft Rubber Ring	실링기 구동축 고무링	1	
A-52	41-02100-100H		Silobin Winder Spring	실링기 스프링	1	
A-53	41-02110-100H		Silobin Winder Adjusting Plate	실링기 조정판	1	
A-54	01-01100-123D		Screw(L)104*mm2	볼트(S)104*mm2	1	
A-55	01-01194-123D		Washer	와셔	1	
A-56	41-02110-100H		Silobin Winder Lower Shaft	실링기 하부 축	1	
A-57	41-02140-100H		Silobin Winder Adjusting Term	실링기 조정 용	1	
A-58	01021500-4113		Screw(M)104*mm2	볼트(S)	1	

Note: P=Heavy Material(중형재), M=Medium Material(일반재), M= Pneumatic Heavy Material(공압식 중형재)  
L=Light Material(저형재), K=Roll Material(롤재), EL=Large Shuttle Piece(대 셔틀 폭재)

①:관계 별 고유 코드

Unique code by mechanism

②:관계 별 고유 명칭

Unique name by mechanism

③:관계도

Explode view

④Ref.No.:파트별 고유 식별 번호

Unique identification number by part

⑤Parts No.:고유 제품 코드

Unique Product code

Ex)

구분 Category	Code	비고 remarks
구 부품 Old part	01-030C-1230	
신 부품 New Part	AS-000000-00	조(組) 파트 Set parts
	GP-000000-00	기구적 파트 Instrumental parts
	EP-000000-00	전기적 파트 Electrical parts

⑥Note:공지사항 표기 및 메모

Refers to notice and memo

⑦품명

명:파트의 고유 품명

Name of Part:Unique name of parts

⑧Q'ty :파트의 수량

The number of parts

⑨Assembly no.:조(組) 파트의 식별 번호

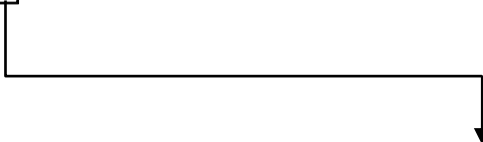
Unique identification number by set part

# Warning

1. 조에 속한 파트는 개별 조립 시 제품의 파손 또는 재봉 불량일 수 있어 해당 파트에 대한 주문 시에는 조 품목으로만 구입이 가능합니다.
2. 본 책자는 Parts Book으로 제작되었으므로 매뉴얼로 사용 불가합니다.
3. 사전 예고 없이 사양이 변경 될 수도 있습니다.

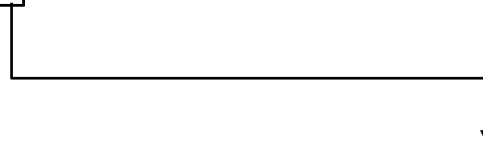
1. The parts classified as ass'y items may cause damage to the machine or bad sewing when they are separately assembled. Hence, when they are ordered, they can be purchased as ass'y items only.
2. This is a parts book. It cannot be used as a manual.
3. Parts are Subject to change in Design Without Prior Notice.

KM-2310U



Code	Application
G	General Materials
B	Heavy Materials

KM-2310U



코드	용도
G	일반용
B	후물용

# CONTENTS

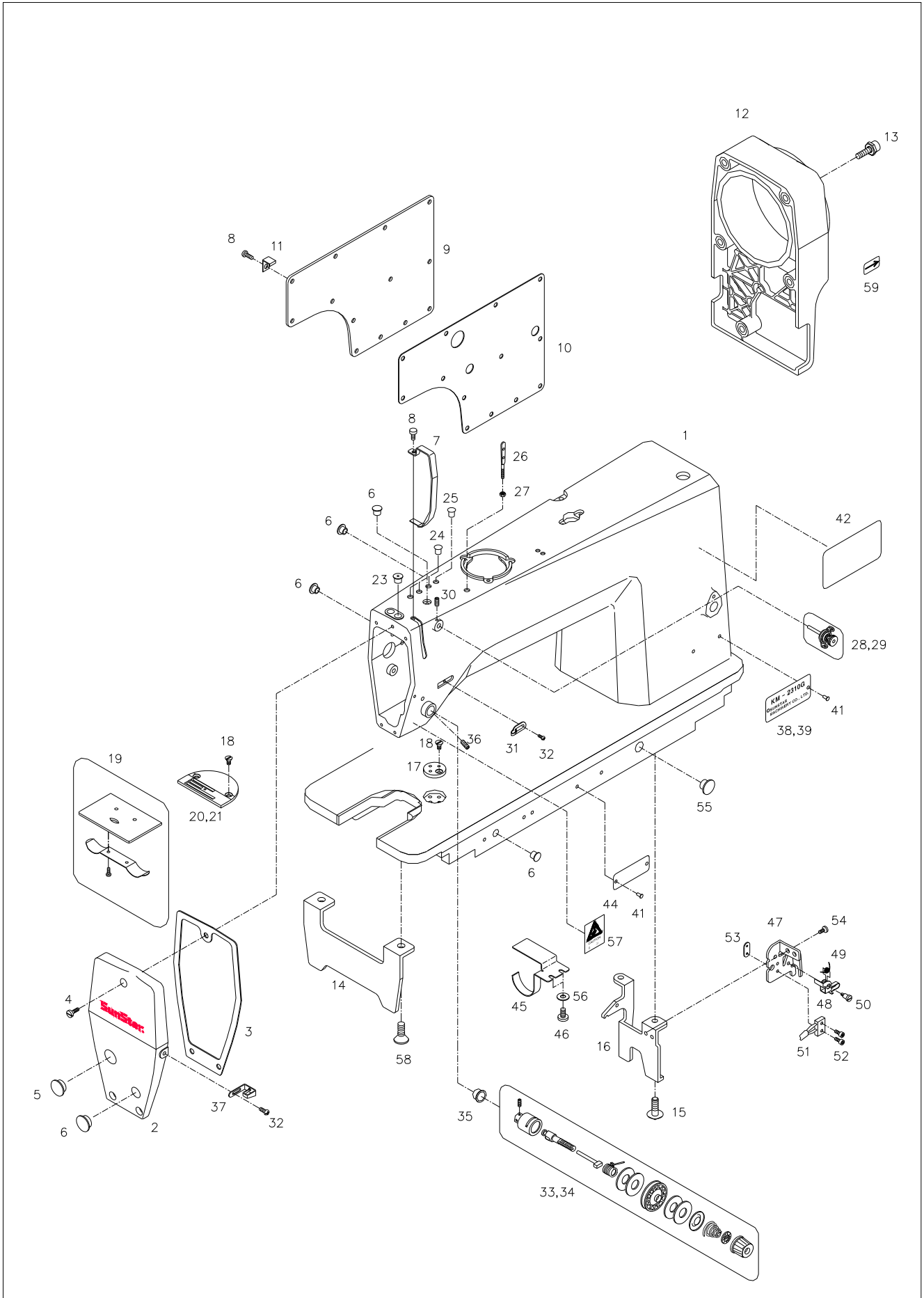
## 목 차

A	Machine Body Mechanism 두부외장 관계	6
B	Upper Shaft & Needle Bar Mechanism 상축, 실채기, 바늘대 관계	10
C	Thread Winder Mechanism 실감기 관계	14
D	Feed Adjusting Mechanism 피이드 조절 관계	16
E	Lower Shaft Mechanism 하축 관계	18
F	Feed Mechanism 피이드 관계	20
G	Presser Foot & Tension Release Mechanism 노루발 및 실눗추기 관계	22
H	Lubrication Mechanism 급유 관계	24
I	Thread Trimmer Mechanism 사절 관계	26
J	Oil Pan & Knee Lifting Mechanism 오일팬 및 무릎올림 관계	30
K	Reverse Button Mechanism 역진 버튼 관계	32
L	Thread Wiper Mechanism 와이퍼 관계	34
M	Auto Knee Lifter Solenoid Mechanism (Option) 자동무릎올림 관계 (선택사양)	36
N	Accessories Mechanism 액세서리 관계	38
	Index 인덱스	40

# A

## Machine Body Mechanism

### 외장 관계



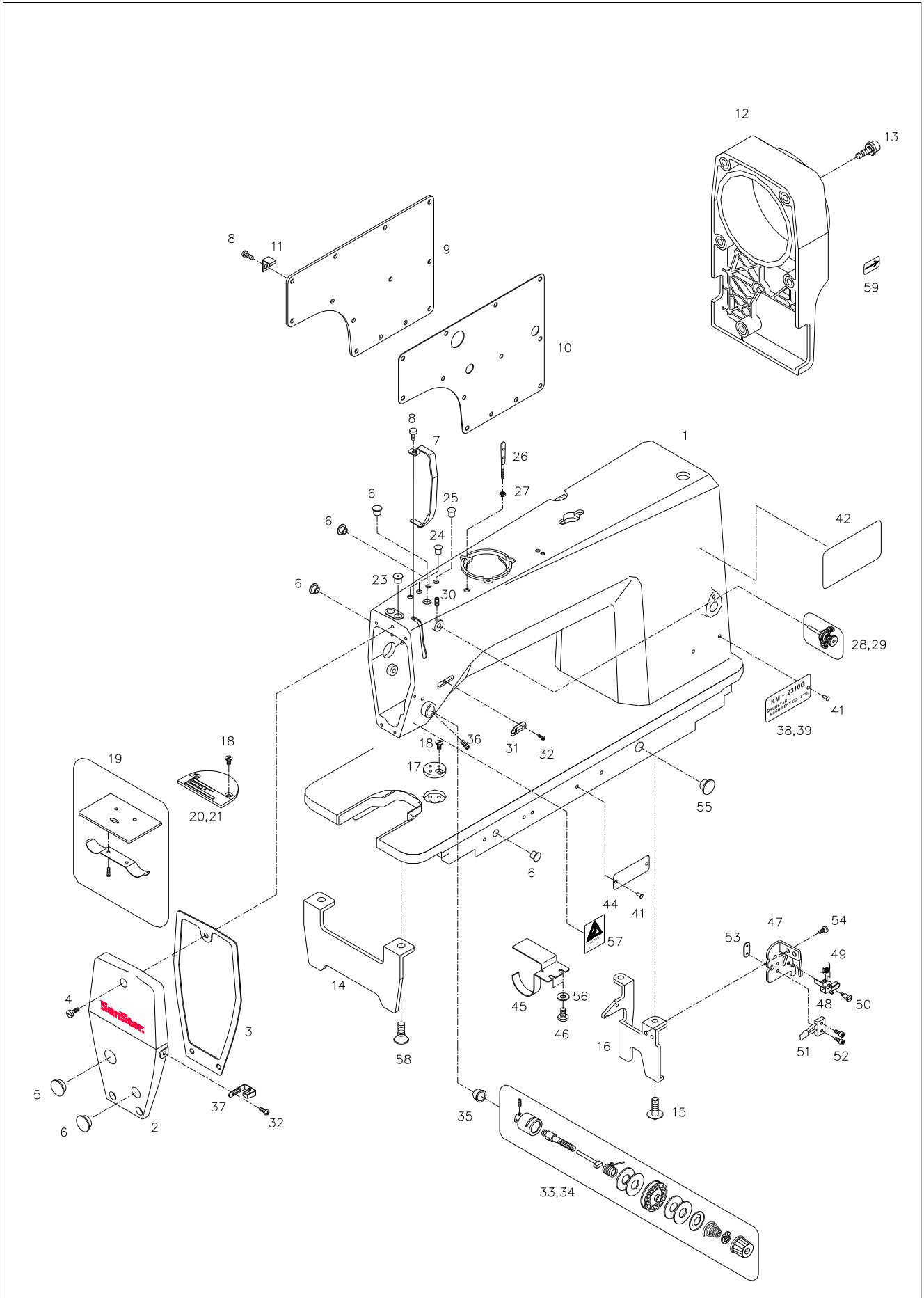


Ref. No.	Parts No.	Note	Name of Parts	품 명	Q'ty		Applied Period
					G	B	
A-1	AS-001750-01		Arm-Bed	아암 베드	1	1	
A-2	CMB-LA010801		Face Plate	면판	1	1	
A-3	CMB-FC003900		Face Plate Gasket	면판 가스켓	1	1	
A-4	DSC-BF008400		Screw [3/16" n=28, L=11]	침나사	3	3	
A-5	DPK-CB000900		Face Plate Rubber Cap (L)	면판 고무 마개 (L)	1	1	
A-6	D{K-CB000200		Rubber Cap (M)	고무 마개 (M)	5	5	
A-7	CMB-LA004300		Thread Take-up Lever Cover	실채기 커버	1	1	
A-8	DSC-BF000600		Screw [3/16" n=28]	실채기 커버 침나사	14	14	
A-9	CMB-LA011200		Rear Cover	뒷뚜껑	1	1	
A-10	CMB-FC004100		Rear Cover Gasket	뒷뚜껑 가스켓	1	1	
A-11	DTC-AH000200		Cord Holder "A"	코드 잡이"A"	1	1	
A-12	CMB-LA010701		Motor Cover	모터 커버	1	1	
A-13	PSC-AC006100		Screw [M5, L=15]	모터 커버 침나사	5	5	
A-14	CMB-BB006200		Bed Supporter-A	베드 다리-A	1	1	
A-15	DSC-BF000700		Screw [15/64" n=28, L=14]	베드 다리 침나사	2	2	
A-16	CMB-BB005900		Bed Supporter-B	베드 다리-B	1	1	
A-17	CMB-BJ002400		Guage Plate	게이지 부착판	1	1	
A-18	DSC-BC000100		Screw [11/64" n=40]	침판 침나사	3	3	
A-19	CMB-LB004400		Slide Plate Ass'y	미끄럼판 (조)	1	1	
A-20	CGA-GA000200		Needle Plate (A-Type, 3 row)	침판 (A형)	1		
A-22	CGA-GA001200		Needle Plate (BH-Type, 4 row)	침판 (마그린)		1	
A-23	GP-044024-00		Rubber Cap	바늘대 상봇싱 고무마개	1	1	Mar.25.09
A-24	DPK-CB000800		Rubber Cap (S)	고무 마개 (S)	3	3	
A-25	01-037R-1230		Rubber Cap	고무 마개	1	1	
A-26	CMB-HK002000		Upper Thread Guide Pin	실안내봉	1	1	
A-27	DSN-AA000100		Nut [11/64" n=40]	너트	1	1	
A-28	AS-001571-00		Sub Upper Thread Tension Control Ass'y	보조 실조절 장치 (조)	1		
A-29	ATA-PS002401		Sub Upper Thread Tension Control Ass'y-Heavy	보조 실조절 장치(조) : 후물용		1	
A-30	DSC-CA001600		Screw [11/64" n=40]	보조 실조절 장치 고정나사	1	1	
A-31	CMB-HK000500		Arm Thread Guide	암 실안내	1	1	
A-32	DSC-BA000100		Screw [9/64" n=40]	실안내 침나사	2	2	
A-33	ATA-PS001300		Thread Tension Control Ass'y	실조절 장치 (조)	1		
A-34	ATA-PS001301		Thread Tension Control Ass'y (Heavy)	실조절 장치 (조) : 후물용		1	
A-35	DPK-CZ000200		Cap for Tension Release Pin	누유방지용 캡	1	1	
A-36	08-001S-1230		Screw [15/64" n=28]	실조절 장치 고정나사	1	1	
A-37	CMB-HK001900		Face Plate Thread Guide	면판 실안내	1	1	
A-38	GP-006209-00		Model Mark (KM-2310G)	모델 마크 (KM-2310G)	1		
A-39	GP-006210-00		Model Mark (KM-2310B)	모델 마크 (KM-2310B)		1	
A-41	01-035P-7400		Pin	기번판 핀	4	4	
A-42	-		Caution Label	주의 라벨	1	1	
A-44	01-035P-1370		Machine Number Plate	기번판	1	1	
A-45	CLB-BJ001700		Timing Pulley-Lower Oil Cover	타이밍풀리-하 오일커버	1	1	
A-46	DSC-BJ001400		Screw [9/64" n=40]	고정나사	2	2	
A-47	CMB-BB006400		Safety Switch Base	안전 스위치 베이스	1	1	
A-48	CMB-BJ004200		Safety Switch Plate	안전 스위치판	1	1	
A-49	DSP-AC004300		Safety Switch Spring	안전 스위치 스프링	1	1	
A-50	DSC-FA012200		Safety Switch Hinge Screw	안전 스위치 단나사	1	1	
A-51	GP-001858-00		Safety Switch	안전 스위치	1	1	
A-52	SC-000174-00		Screw [M2, L=12]	안전 스위치 침나사	2	2	
A-53	CMB-BJ003800		Safety Switch Sub Bracket	안전 스위치 보조브라켓	1	1	
A-54	DSC-BF003600		Screw [11/64" n=40]	안전 스위치 베이스 침나사	2	2	
A-55	DPK-CB002400		Rubber	베드 고무 마개	1	1	
A-56	DWS-AA003800		Washer	와셔	2	2	
A-57	GP-009821-00		Warning Sticker A	경고 스티커 A	1	1	
A-58	DSC-BB003600		Screw [15/64" n=28]	베드다리 접시머리나사	2	2	

# A

## Machine Body Mechanism

### 외장 관계



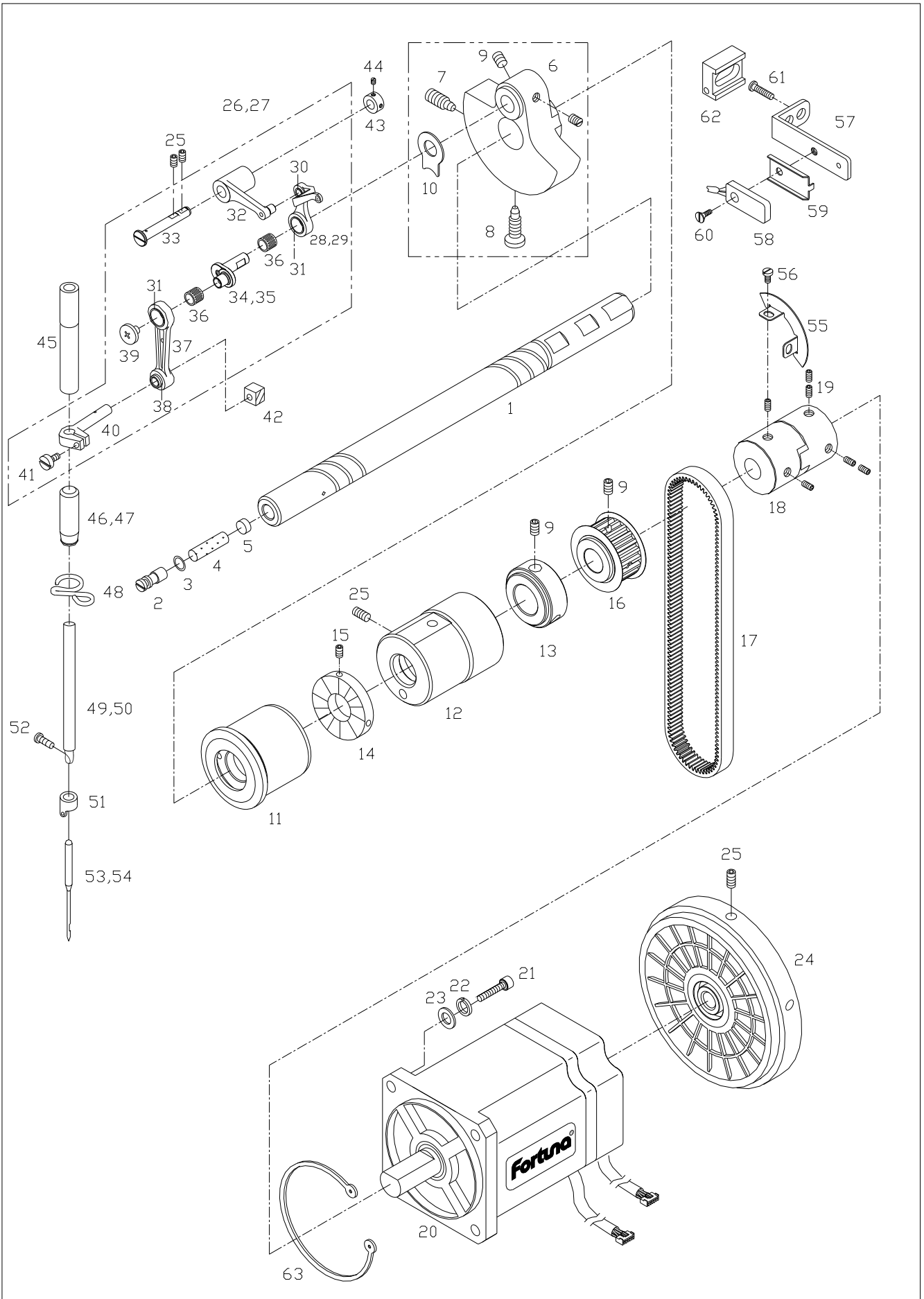




# B

## Upper Shaft & Needle Bar Mechanism

상축, 실채기, 바늘대 관계



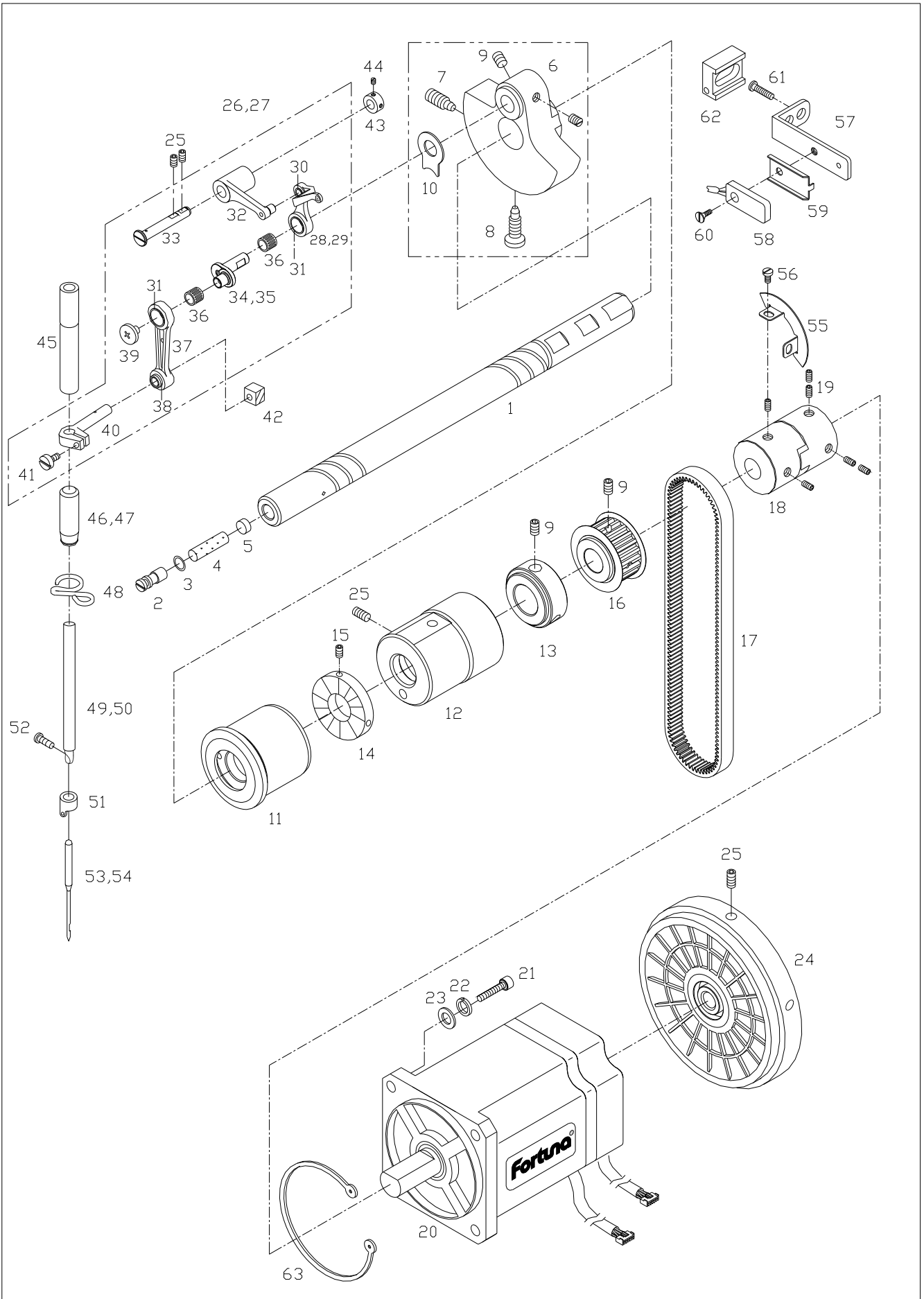


Ref. No.	Parts No.	Note	Name of Parts	품 명	Q'ty		Applied Period
					G	B	
B-1	CUS-KC001500		Upper Shaft	상축	1	1	
B-2	GP-034537-01		Oil Adjusting Pin	상축유량조절핀	1	1	
B-3	PPK-BA000400		O-Ring	상축유량조절핀 O링	1	1	
B-4	CLB-JL001600		Upper Shaft Felt	상축펠트	1	1	
B-5	CUS-FA000100		Oil Adjusting Rubber	상축유량조절고무	1	1	
B-6	CUS-DA001400		Link Cam	링크캠	1	1	
B-7	DSC-BF003700		Screw (A) [9/32" n=28, L=16]	링크캠 고정나사 (A)	1	1	
B-8	DSC-CA002100		Screw (B) [9/32" n=28, L=16]	링크캠 고정나사 (B)	1	1	
B-9	DSC-CB000400		Screw [1/4" n=40, L=6]	고정 나사	8	8	
B-10	CUS-BJ001000		Link Cam Protection Plate	링크캠 접촉판	1	1	
B-11	DBS-DB004000		Upper Shaft Bushing(Front)	상축전봇싱	1	1	
B-12	DBS-DA015000		Upper Shaft Bushing(Middle)	상축중봇싱	1	1	
B-13	DCL-AA005600		Upper Shaft Collar	상축카라	1	1	
B-14	CUS-CF000400		Bobbin Winder Driving Wheel	실감기 구동 휠	1	1	
B-15	DSC-CA000600		Screw [11/64" n=40, L=4]	실감기 구동 휠 고정나사	2	2	
B-16	DPL-BF000200		Timing Pulley-Upper (T5)	타이밍폴리-상 (T5)	1	1	
B-17	PBT-BF000200		Timing Belt(150-T5-550)	타이밍 벨트(우레탄, T5)	1	1	
B-18	PCR-AD000200		Coupling	커플링	1	1	
B-19	PSC-CB000100		Screw [M6, L=8]	커플링 고정나사	6	6	
B-20	DMT-AA000400		Motor-Hollow	모터-양축	1	1	
B-21	PSC-AC000100		Screw [M5, L=25]	모터침나사	4	4	
B-22	DWS-CA000100		Spring Washer	모터고정나사 스프링와셔	4	4	
B-23	DWS-AA000600		Washer	모터고정나사 와셔	4	4	
B-24	CUS-CP000401		Pulley	폴리	1	1	
B-25	DSC-CB000500		Screw [15/64" n=28, L=7.5]	폴리 고정나사	4	4	
B-26	AS-001731-00		Thread Take-up Lever Ass'y (General)	실채기(조) [일반용]	1		
B-27	AS-001732-00		Thread Take-up Lever Ass'y (Heavy)	실채기(조) [후물용]		1	
B-28	GP-002164-00		Thread Take-up (General)	실채기(일반용)	1		
B-29	CTH-HJ001400		Thread Take-up (Heavy)	실채기(후물용)		1	
B-30	DBS-DA014800		Thread Take-up Bushing	실채기 연결봇싱	1	1	
B-31	08-512A-250U		Bearing Bushing	베어링 연결봇싱	2	2	
B-32	CTH-CB001100		Thread Take-up Crank	실채기 크랭크	1	1	
B-33	DPN-AD007300		Thread Take-up Crank Shaft	실채기 크랭크축	1	1	
B-34	GP-002167-00		Needle Bar Crank(General)	바늘대 크랭크(일반용)	1		
B-35	CTH-CJ001000		Needle Bar Crank(Heavy)	바늘대 크랭크(후물용)		1	
B-36	PBR-BA000600		Bearing	나이들 베어링	2	2	
B-37	CTH-CC000900		Needle Bar Crank Rod	바늘대 크랭크 로드	1	1	
B-38	DBS-DA012900		Needle Bar Crank Rod Bushing	바늘대 크랭크 로드 봇싱	1	1	
B-39	DSC-BF001600		Screw [9/64" n=40]	바늘대 크랭크 원나사	1	1	
B-40	CNB-BF001200		Needle Bar Holder	바늘대 잡이	1	1	
B-41	DSC-BA001000		Screw [9/64" n=40]	바늘대 잡이 침나사	1	1	
B-42	CNB-BK000800		Slide Block	바늘대 안내 블록	1	1	
B-43	DCL-AA005600		Thrust Collar[D=φ7.94, W=8]	실채기 크랭크축 카라	1	1	
B-44	DSC-BA000300		Screw [11/64" n=40]	실채기 크랭크축 카라 고정나사	2	2	
B-45	DBS-DA012600		Needle Bar Bushing, Upper	바늘대 상봇싱	1	1	
B-46	DBS-DA013000		Needle Bar Bushing, Lower (General)	바늘대 하봇싱(일반용)	1		
B-47	DBS-DA014900		Needle Bar Bushing, Lower (Heavy)	바늘대 하봇싱(후물용)		1	
B-48	CNB-BH000100		Thread Guide for Needle Bar Bushing	바늘대 하봇싱 실안내	1	1	
B-49	CNB-KA001300		Needle Bar (General)	바늘대(일반용)	1		
B-50	CNB-KA001400		Needle Bar (Heavy)	바늘대(후물용)		1	
B-51	CNB-HK000400		Needle Bar Thread Guide	바늘대 실안내	1	1	
B-52	DSC-BF000100		Screw [1/8" n=44]	바늘 고정나사	1	1	
B-53	-		Needle (DB×1 #14)	바늘(일반용)	1		
B-54	-		Needle (DB×1 #21)	바늘(후물용)		1	
B-55	CUS-BJ000900		Sync. Sensor Slit	센서 감지판	1	1	
B-56	DSC-BA002400		Screw [M6]	센서 감지판 침나사	2	2	

# B

## Upper Shaft & Needle Bar Mechanism

상축, 실채기, 바늘대 관계



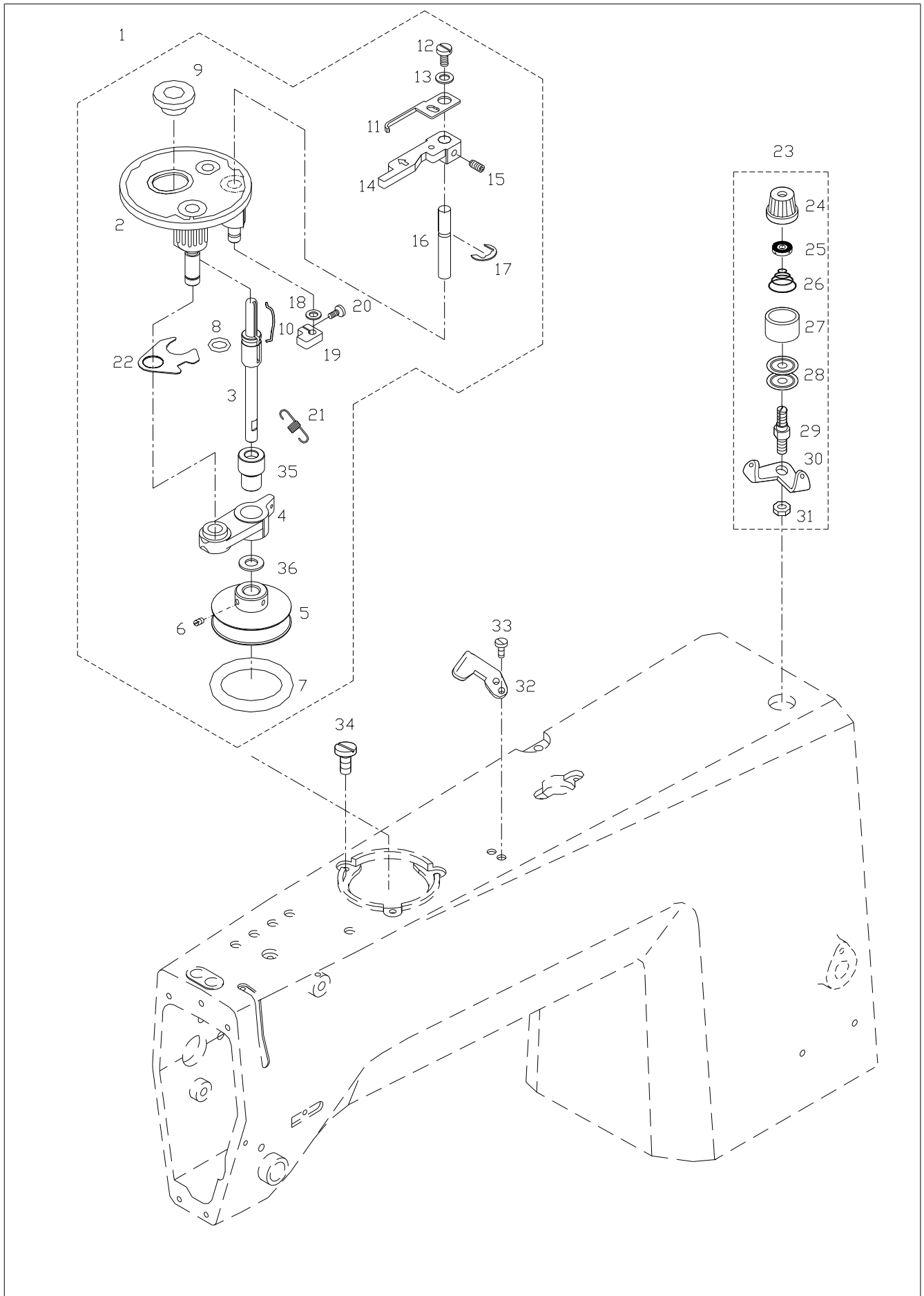


Ref. No.	Parts No.	Note	Name of Parts	품명	Q'ty		Applied period
					G	B	
B-57	CUS-BA000200		Sync. Sensor Base	센서 베이스	1	1	
B-58	46-102A-2300		Sync. Sensor	센서	1	1	
B-59	CUS-BB001200		Sensor Bracket	센서 브라켓	1	1	
B-60	DSC-BA001900		Screw [M3, L=10]	센서 침나사	1	1	
B-61	DSC-BF008400		Screw [3/16" n=28]	센서 베이스 침나사	2	2	
B-62	CUS-FZ000100		Cable Guide Rubber	케이블가이드 고무	1	1	
B-63	PSR-AB001100		C-Ring	C-링(Ø70외경용)	1	1	

# C

## Thread Winder Mechanism

### 실감기 관계



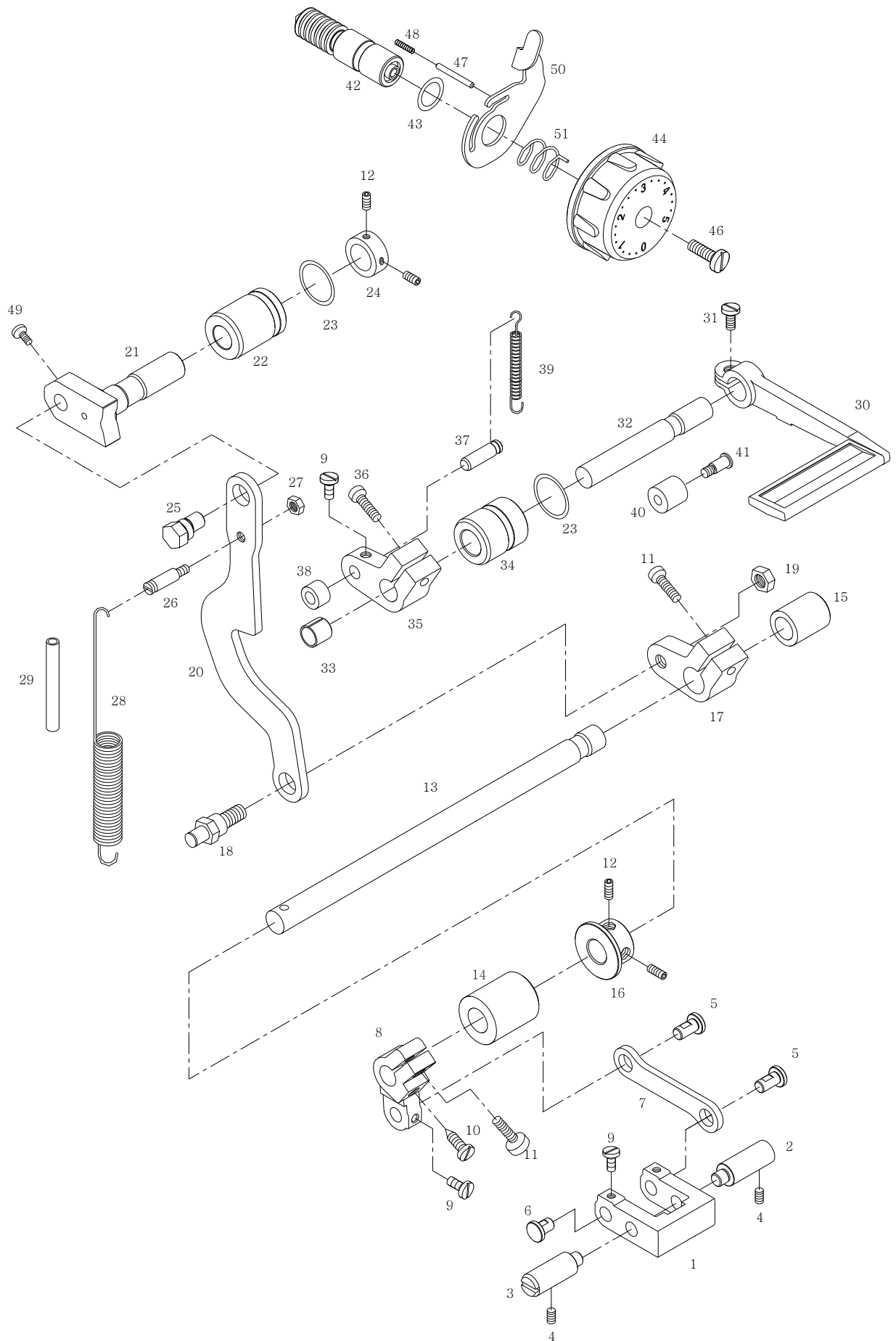


Ref. No.	Parts No.	Note	Name of Parts	품 명	Q'ty		Assembly No.
					G	B	
C-1	41-101A-2300		Bobbin Winder Ass'y	실감기 (조)	1	1	
C-2	ABW-PS000200		Bobbin Winder Base Ass'y	실감기 베이스 (조)	1	1	
C-3	CBW-KC000300		Bobbin Winder Driving Shaft	실감기 구동축	1	1	
C-4	CBW-BA000500		Bobbin Winder Action Body	실감기 작동체	1	1	
C-5	CBW-CP000200		Bobbin Winder Action Pulley	실감기 작동 폴리	1	1	
C-6	DSC-CB000300		Screw [11/64"n=40]	실감기 작동 폴리 고정나사	2	2	
C-7	CBW-FA000300		Bobbin Winder Action Ring	실감기 작동 링	1	1	
C-8	CBW-FA000200		Bobbin Winder Shaft Rubber Ring	실감기 구동축 고무링	1	1	
C-9	CBW-BN000200		Bobbin Stand	보빈 스탠드	1	1	
C-10	CBW-BH000200		Bobbin Stopper	보빈 스토퍼	1	1	
C-11	CBW-BJ000400		Bobbin Winder Adjusting Plate	실감기 조정판	1	1	
C-12	DSC-BF001800		Screw [1/8"n=40]	실감기 조정판 첩나사	1	1	
C-13	PWS-AA002100		Washer	와셔	1	1	
C-14	CBW-CM000200		Bobbin Winder Lever	실감기 레버	1	1	
C-15	PSC-CB000200		Screw [M4xP0.7]	실감기 레버 고정나사	1	1	
C-16	CBW-KC000100		Bobbin Winder Lever Shaft	실감기 레버축	1	1	
C-17	PSR-AC000200		E-ring [φ5]	실감기 레버축 E 링 (호칭경5)	2	2	
C-18	DWS-AA000400		Washer	와셔	2	2	
C-19	CBW-DZ000100		Thread Winder Adjusting Cam	실감기 조절캠	1	1	
C-20	PSC-AC001800		Screw [M4xP0.7]	실감기 조절캠 첩나사	1	1	
C-21	DSP-AB000100		Thread Winder Spring	실감기 인장 스프링	1	1	
C-22	CBW-BJ000100		Thread Winder Action Plate	실감기 작동판	1	1	
C-23	AMB-PS002300		Thread Tension Control Ass'y	실감기 실장력 조절장치 (조)	1	1	
C-24	41S034S-306H		Thread Tension Control Cap Nut	실장력 조절 캠 너트	1	1	
C-25	CTA-BJ000100		Thread Tension Control Spring Stopper	실장력 조절 스프링 스토퍼	1	1	
C-26	DSP-BA001900		Thread Tension Control Spring	실장력 조절 스프링	1	1	
C-27	CTA-BD000200		Spring Cover	스프링 커버	1	1	
C-28	40-108A-1306		Thread Tension Disk	실안내 접시	1	1	
C-29	CMB-HM000100		Thread Tension Adjusting Shaft	실장력 조절축	1	1	
C-30	CMB-HK001000		Thread Guide Plate	실안내판	1	1	
C-31	DSN-AA000700		Nut	너트	1	1	
C-32	CMB-NB000100		Bobbin Winder Mes	실감기 메스	1	1	
C-33	DSC-BC000200		Screw [9/64"n=40]	실감기 메스 첩나사	2	2	
C-34	DSC-BF001700		Screw [11/64"n=40]	실감기 작동판 첩나사	3	3	
C-35	DBS-DB003500		Bobbin Winder Action Body Bushing	실감기 작동체 붓싱	1	1	
C-36	DWS-AA011200		Washer for Bobbin Winder Driving Shaft	실감기 구동축 와셔	1	1	

# D

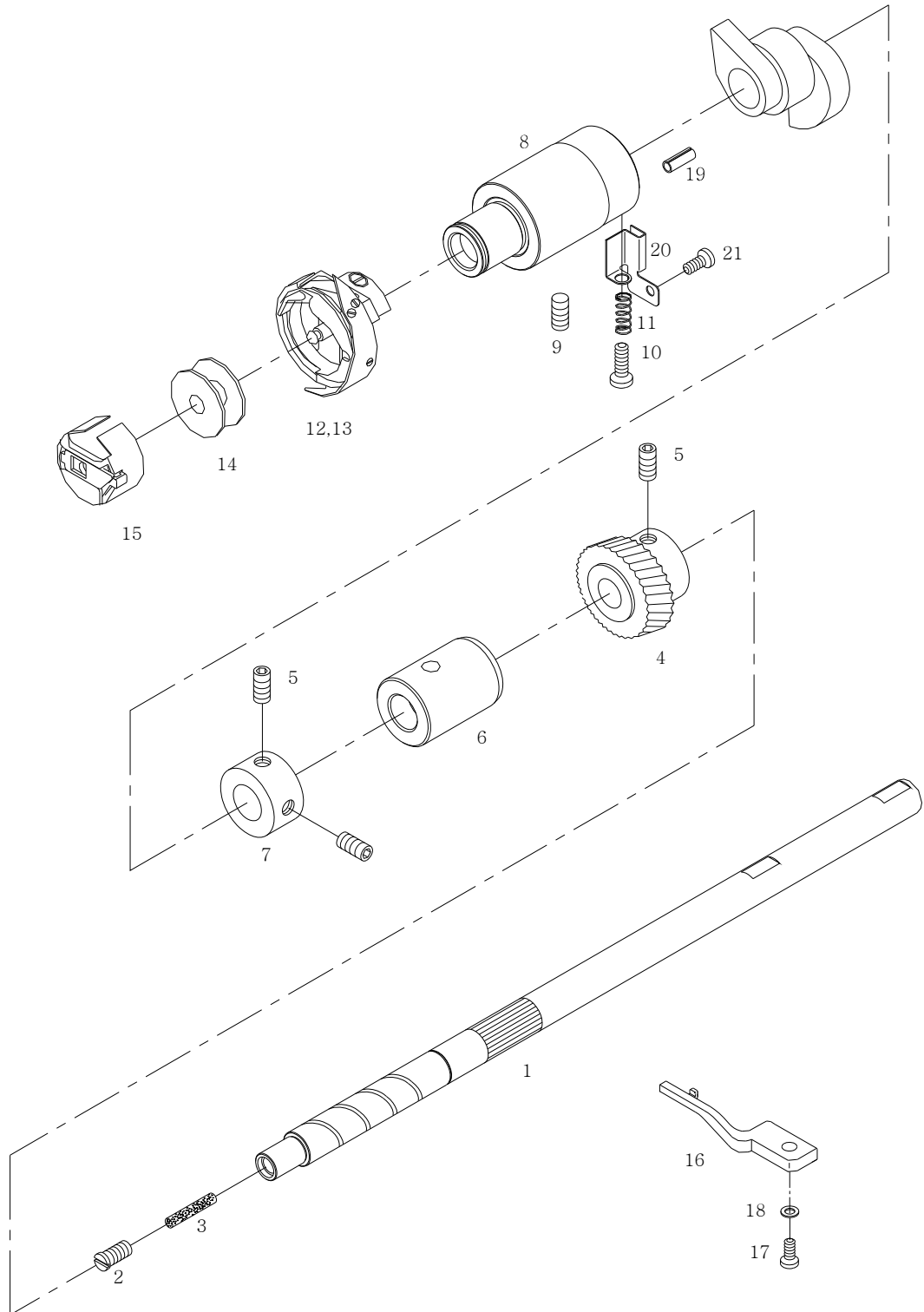
## Feed Adjusting Mechanism

### 피이드 조절 관계





Ref. No.	Parts No.	Note	Name of Parts	품 명	Q'ty		Assembly No.
					G	B	
D-1	CFA-CA000700		Feed Link	피이드 링크	1	1	
D-2	DPN-BC002500		Feed Link Connecting Pin-A	피이드링크 연결 핀-A	1	1	
D-3	DPN-BC002600		Feed Link Connecting Pin-B	피이드링크 연결 핀-B	1	1	
D-4	DSC-CB000500		Screw [15/64"n=28, L=7.5]	피이드링크연결핀고정나사	2	2	
D-5	DPN-AD006700		Feed Link Pin a	피이드링크핀a	2	2	
D-6	PN-000104-00		Feed Link Pin b	피이드링크핀b	1	1	
D-7	CFA-CA000801		Feed Link Connecting Rod	피이드링크연결로드	1	1	
D-8	CFA-CB000800		Feed Adjusting Shaft Crank(Front)	피이드조절축 크랭크(전)	1	1	
D-9	DSC-BA002500		Screw [11/64"n=40]	크랭크 고정나사	4	4	
D-10	DSC-BJ003800		Screw [15/64"n=28, L=10.5]	피이드조절축 크랭크(전) 고정나사	1	1	
D-11	DSC-BF000700		Screw [15/64"n=28, L=14]	피이드조절축 크랭크(전) 칩나사	2	2	
D-12	DSC-CB000400		Screw [1/4"n=40, L=6]	고정 나사	4	4	
D-13	CFA-KC000400		Feed Adjusting Shaft	피이드조절축	1	1	
D-14	DBS-DA013100		Feed Adjusting Shaft Bushing(Front)	피이드조절축 전붓심	1	1	
D-15	DBS-DA013200		Feed Adjusting Shaft Bushing(Rear)	피이드조절축 후붓심	1	1	
D-16	DCL-AA005300		Feed Adjusting Shaft Collar	피이드 조절 축 카라	1	1	
D-17	CFA-CB000700		Feed Adjusting Shaft Crank(Rear)	피이드조절축 크랭크(후)	1	1	
D-18	DSC-GC000400		Feed Adjusting Shaft Crank(Rear) Hinge Screw	피이드조절축 크랭크(후) 단나사	1	1	
D-19	DSN-AA000500		Nut [1/4"n=40]	피이드조절축 크랭크(후) 고정너트	1	1	
D-20	CFA-CC000600		Feed Regulator Rod	피이드 조절 로드	1	1	
D-21	CFA-DF000200		Feed Regulator	피이드 조절기	1	1	
D-22	GP-000830-00		Feed Regulator Bushing	피이드조절기 붓심	1	1	
D-23	PPK-BA001800		O-Ring for Bushing (P18)	붓심 O링	2	2	
D-24	DCL-AA002300		Feed Regulator Collar	피이드조절기 카라	1	1	
D-25	CFA-CH000100		Feed Regulator Eccentric Pin	피이드조절기 편심핀	1	1	
D-26	DSC-HD001000		Feed Adjusting Spring Holder Screw	피이드조절 스프링걸이나사	1	1	
D-27	DSN-AA000900		Nut [11/64"n=40]	피이드 스프링걸이 너트	1	1	
D-28	DSP-AB002900		Feed Adjusting Spring	피이드 조절 스프링	1	1	
D-29	CLB-JG000900		Hose [φ3×φ5, L=80]	피이드 조절 스프링 완충 호스	1	1	
D-30	CFA-CM000600		Reverse Feed Control Lever	역진레버	1	1	
D-31	DSC-BA001400		Screw [3/16"n=32]	역진레버 칩나사	1	1	
D-32	CFA-KC000500		Reverse Feed Control Lever Shaft	역진레버축	1	1	
D-33	PBS-BA000600		DU Bushing [φ12×φ14×20]	역진레버축 전붓심	1	1	
D-34	DBS-DB003900		Reverse Feed Lever Shaft Bushing(Rear)	역진레버축 후붓심	1	1	
D-35	AS-000240-00		Reverse Feed Lever Crank	역진레버 크랭크	1	1	
D-36	DSC-BF012200		Screw [3/16"n=28, L=15.5]	크랭크 칩나사	1	1	
D-37	DPN-AA007800		Reverse Feed Lever Crank Pin	역진레버 크랭크 핀	1	1	
D-38	CFA-CL000200		Reverse Feed Lever Crank Roller Rubber	역진레버 크랭크롤러 고무	1	1	
D-39	DSP-AB003000		Reverse Feed Lever Return Spring	역진레버 복귀 스프링	1	1	
D-40	CFA-FZ000100		Reverse Feed Lever Stopper Rubber	역진레버 스토퍼 고무	1	1	
D-41	DSC-FA006200		Stopper Stud Screw	역진레버 스토퍼 단나사	1	1	
D-42	CFA-KJ000201		Feed Regulator Dial Shaft	피이드 조절 다이알 축	1	1	
D-43	PPK-BA001600		O-Ring	다이알 축 오링	1	1	
D-44	CFA-CQ000301		Dial (5mm)	다이알 (5mm)	1	1	
D-46	DSC-BF001900		Screw [3/16"n=28]	다이알 칩나사	1	1	
D-47	DPN-AA007700		Dial Pin	다이알 핀	1	1	
D-48	DSP-AA002800		Spring for Dial Pin	다이알핀 스프링	1	1	
D-49	DSC-BJ000200		Screw [11/16"n=40]	피이드 조절기 고정나사	2	2	
D-50	CFA-BJ001000		Dial Shaft Eccentric Stopper	다이알 축 편심 스토퍼	1	1	
D-51	DSP-AA005200		Spring	다이알 축 편심 스토퍼 스프링	1	1	

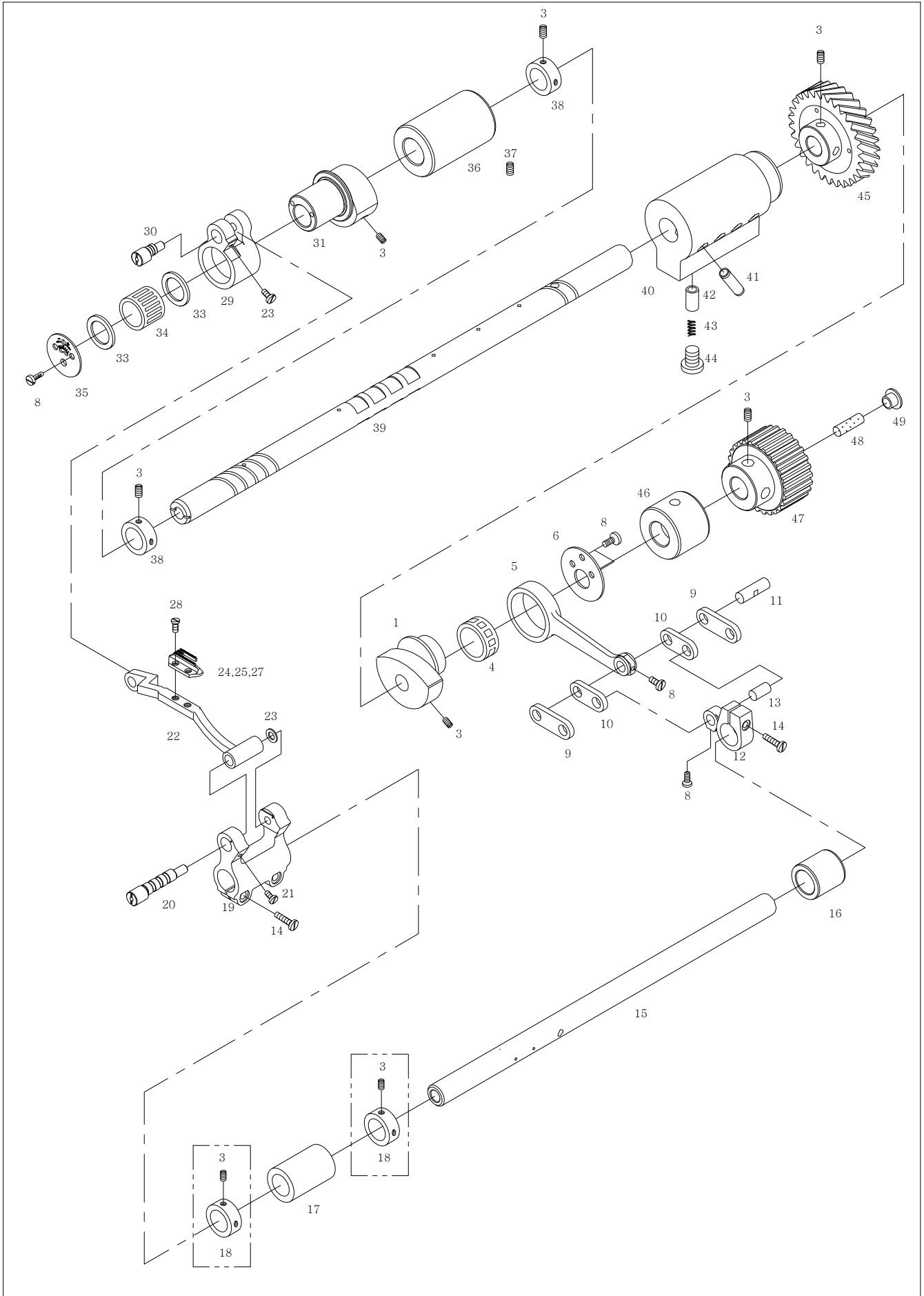




# F

## Feed Mechanism

### 피이드 관계



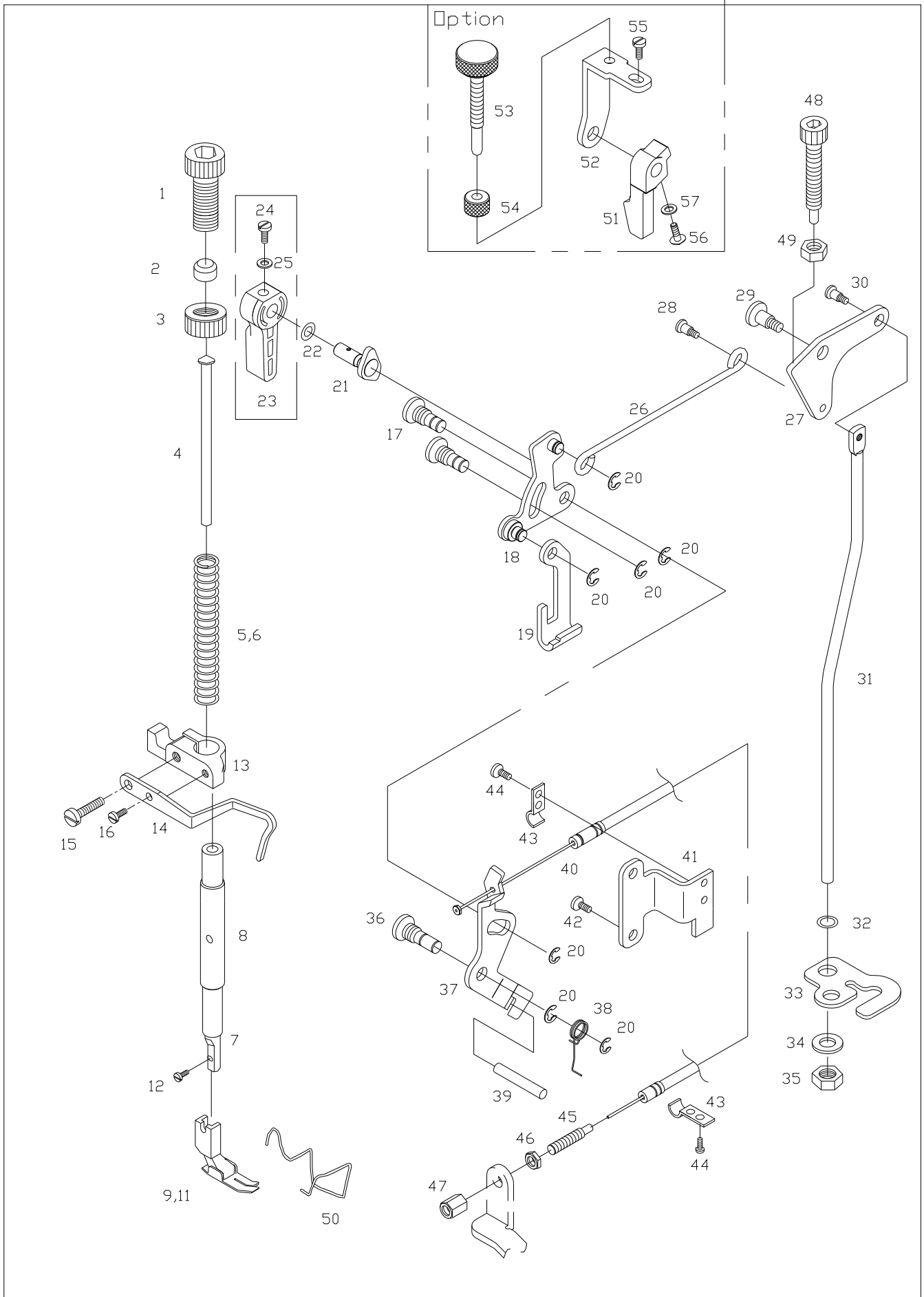
Ref. No.	Parts No.	Note	Name of Parts	품 명	Q'ty		Applied Period
					G	B	
F-1	CLF-DC000500		Feed Cam	피이드 캠	1	1	
F-3	DSC-CB000400		Screw [1/4"n=40, L=6]	칩나사	14	14	
F-4	PBR-BA001000		Needle Bearing [KT252910]	피이드 캠 베어링	1	1	
F-5	CLF-CC000600		Feed Cam Connecting Rod	피이드 캠 연결로드	1	1	
F-6	CLF-BJ001100		Feed Cam Plate	피이드 캠 베어링 커버	1	1	
F-8	DSC-BJ001400		Screw [9/64"n=40]	베어링커버 칩나사	4	4	
F-9	CLF-CA000600		Connecting Link, A	피이드 연결링크 A	2	2	
F-10	CLF-CA000700		Connecting Link, B	피이드 연결링크 B	2	2	
F-11	DPN-AA007900		Feed Cam Connecting Rod Pin	피이드 캠 연결로드핀	1	1	
F-12	CLF-CB001100		Feed Rocker Crank	수평밀대 크랭크	1	1	
F-13	DPN-AA008000		Feed Rocker Crank Pin	수평밀대 크랭크핀	1	1	
F-14	DSC-BF012200		Screw [3/16"n=28, L=15.5]	크랭크 칩나사	3	3	
F-15	CLF-KD000200		Feed Rocker Shaft(Micro Lubrication)	수평밀대(미세급유)	1	1	
F-16	DBS-DA013800		Feed Rocker Shaft Bushing(Rear)	수평밀대 후붓싱	1	1	
F-17	DBS-DA013900		Feed Rocker Shaft Bushing(Front)	수평밀대 전붓싱	1	1	
F-18	DCL-AA004900		Feed Rocker Shaft Collar	수평밀대 카라	2	2	
F-19	CLF-CB000900		Feed Bar Crank	톱니받침 크랭크	1	1	
F-20	CLF-KG000200		Feed Bar Crank Eccentric Shaft A	톱니받침 크랭크 편심축 A	1	1	
F-21	DSC-BA001000		Screw [11/64"n=40]	편심축 고정나사	2	2	
F-22	CLF-BC000100		Feed Bar	톱니받침	1	1	
F-23	DWS-AA011400		Washer [φ7.1×φ11×1]	톱니받침 크랭크 와셔	1	1	
F-24	CGA-GB000501		Feed Dog (General, 3 row)	톱니	1		
F-25	06-007A-257A		Feed Dog (General, 4 row)	톱니	(1)		
F-27	CGA-GB001200		Feed Dog (Heavy, 4 row)	톱니		1	
F-28	DSC-BF001800		Screw [1/8"n=44, L=6]	톱니 칩나사	2	2	
F-29	CLF-CB001000		Feed Lifting Crank	들대 크랭크	1	1	
F-30	CLF-KH000200		Feed Lifting Crank Eccentric Shaft A	들대 크랭크 편심축 A	1	1	
F-31	CLF-DC000700		Feed Lifting Cam	들대캠	1	1	
F-33	DWS-AA011300		Feed Lifting Cam Thrust Guide	들대캠 가이드	2	2	
F-34	PBR-AA007500		Needle Bearing [KT 202417]	들대캠 베어링	1	1	
F-35	CLF-LA000100		Feed Lifting Cam Plate	들대캠 베어링 커버	1	1	
F-36	DBS-DA015300		Feed Lifting Shaft Bushing(Front)	들대전붓싱	1	1	
F-37	DSC-CA000100		Screw [15/64"n=28]	들대전붓싱 고정나사	1	1	
F-38	DCL-AA000300		Feed Lifting Shaft Collar	들대카라	2	2	
F-39	CLF-KC000700		Feed Lifting Shaft	들대	1	1	
F-40	CLB-JC000500		Feed Lifting Shaft Bushing(Middle) Pump	들대중붓싱펌프	1	1	
F-41	CLB-JF000100		Nipple	니플	4	4	
F-42	CLB-CN000300		Piston	피스톤	4	4	
F-43	DSP-AA006300		Piston Spring	피스톤 스프링	4	4	
F-44	DSC-BF012700		Piston Cap Screw	피스톤 마개나사	4	4	
F-45	DGR-AB001000		Feed Lifting Gear Ass'y	들대 기어(조)	1	1	
F-46	DBS-DA015400		Feed Lifting Shaft Bushing(Rear)	들대후붓싱	1	1	
F-47	DPL-BF000300		Timing Pulley-Lower (T5)	타이밍풀리-하 (T5)	1	1	Mar.25.09
F-48	CLB-JL001600		Feed Lifting Shaft Felt	들대 헬트	1	1	
F-49	DPK-CB002500		Rubber Cap for Feed Lifting Shaft	들대 유심 마개	1	1	

\*01 : Selective Part (선택부품)

# G

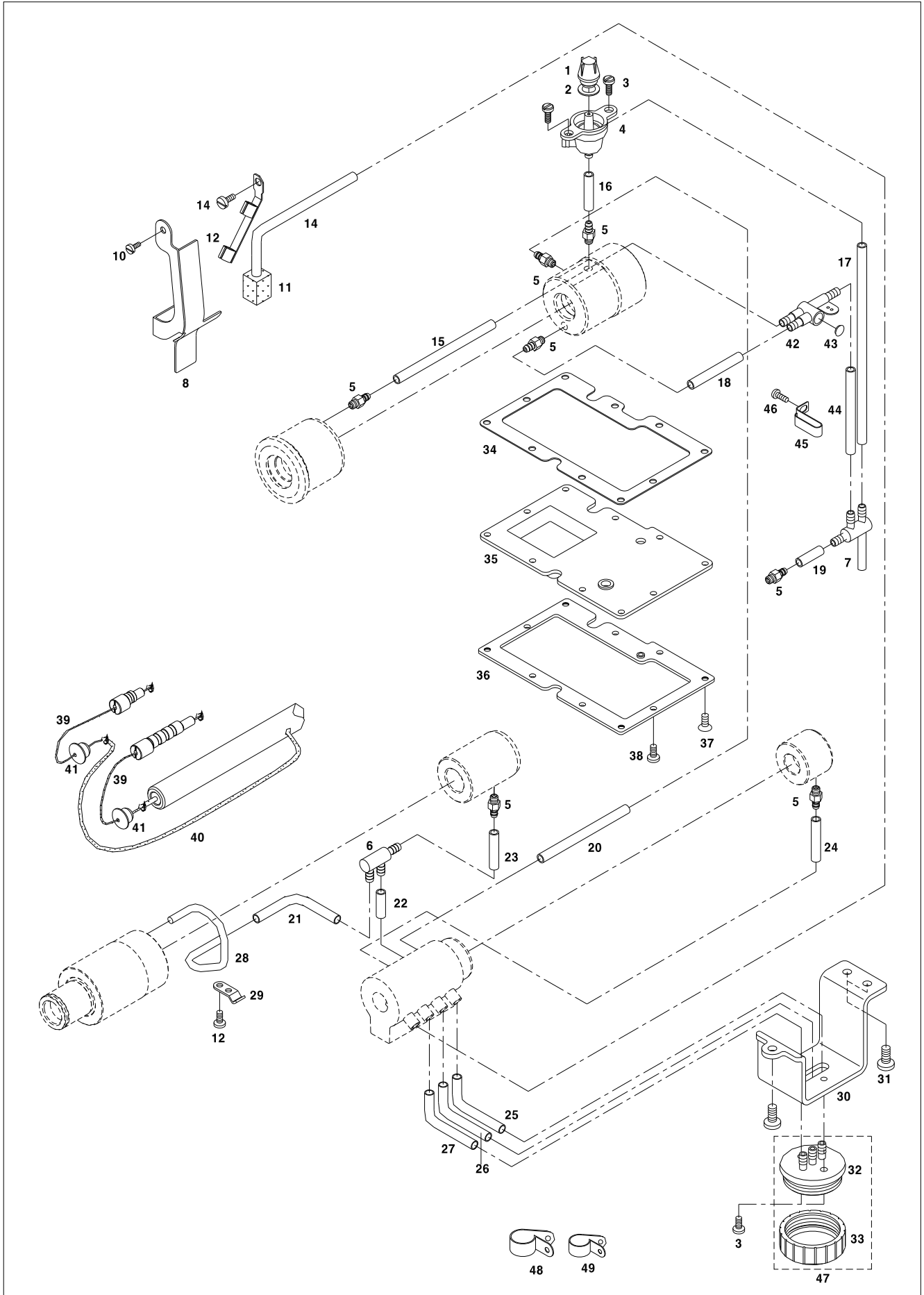
## Presser Foot & Tension Release Mechanism

### 노루발 및 실넛추기 관계





Ref. No.	Parts No.	Note	Name of Parts	품 명	Q'ty		Assembly No.
					G	B	
G-1	DSC-HA000100		Presser Adjusting Screw [9/16"n=20]	압력 조절 나사	1	1	
G-2	DCL-BA000900		Spacer for Presser Adjusting Screw	압력 조절나사 스페이서	1	1	
G-3	DSN-CC000100		Nut [9/16"n=20]	압력 조절나사 너트	1	1	
G-4	CPB-KC000300		Presser Guide Bar	압력 조절봉	1	1	
G-5	DSP-AA001700		Presser Spring	압력 조절 스프링	1		
G-6	DSP-AA006200		Presser Spring(Heavy)	압력 조절 스프링(후물용)		1	
G-7	CPB-KB000700		Presser Bar	누름대	1	1	
G-8	DBS-DA014000		Presser Bar Bushing	누름대 붓싱	1	1	
G-9	CGA-GC000701		Presser Foot Ass'y (General)	노루발(일반용)	1		
G-11	CGA-GC001900		Presser Foot Ass'y (Heavy-4row)	노루발(후물용-4매치)		1	
G-12	DSC-BA000200		Screw [9/64"n=40, L=10.5]	노루발 집나사	1	1	
G-13	CPB-BF000400		Presser Bar Guide Bracket	누름대 잡이	1	1	
G-14	CPB-BJ000700		Thread Guide Plate	실결이판	1	1	
G-15	DSC-BF001200		Screw A [11/64"n=40, L=18]	누름대 잡이 집나사 A	1	1	
G-16	DSC-BF010100		Screw B [9/64"n=40, L=9]	누름대 잡이 집나사 B	1	1	
G-17	DSC-FH000300		Hinge Screw [5/16"n=24]	누름대 올리기 링크 힌지나사	2	2	
G-18	APM-PS000700		Presser Bar Lifter Link Ass'y	누름대 올리기 링크(조)	1	1	
G-19	CPM-CM000900		Presser Bar Lifter Lever	누름대 올림 레버	1	1	
G-20	PSR-AC000200		E-Ring [φ5]	E 링	7	7	
G-21	CPB-DF000300		Presser Lifter Cam Shaft	누름대 올리기 캠축	1	1	
G-22	PPK-BA000400		O-Ring	O-링	1	1	
G-23	CPB-CM000300		Presser Lifter	누름대 올리기	1	1	
G-24	DSC-BJ000300		Screw [9/64"n=40]	누름대 올리기 고정나사	1	1	
G-25	DWS-AA003800		Washer	누름대 올리기 와셔	1	1	
G-26	CPM-BH000600		Presser Lifter Connect Bar	누름대 올리기 연결봉	1	1	
G-27	CPM-CA001000		Knee Lifting Link	무릎 올림 링크	1	1	
G-28	DSC-FC000100		Hinge Screw	누름대 올리기 연결봉 힌지나사	1	1	
G-29	DSC-FA006000		Hinge Screw	무릎 올림 링크 힌지나사	1	1	
G-30	DSC-FA000700		Hinge Screw	무릎 올림봉 힌지나사	1	1	
G-31	CPM-CR000400		Knee Lifting Bar	무릎 올림봉	1	1	
G-32	PPK-BA000300		O-Ring (P5)	무릎 올림봉 O-링	1	1	
G-33	CPM-BJ001000		Knee Lifting Bar Guide	무릎 올림봉 가이드 판	1	1	
G-34	PWS-CA000400		Spring Washer	무릎 올림봉 가이드 판 와셔	1	1	
G-35	DSN-AA002300		Nut [5/16"n=28]	무릎 올림봉 가이드 판 너트	1	1	
G-36	DSC-FH000401		Hinge Screw [5/16"n=24]	실늑추기 판 힌지나사	1	1	
G-37	CTR-CM000800		Thread Tension Release Plate	실늑추기 판	1	1	
G-38	DSP-AC002100		Thread Tension Release Return Spring	실늑추기 판 스프링	1	1	
G-39	DPN-AA008300		Thread Tension Release Supporting Pin	실늑추기 핀	1	1	
G-40	GP-021212-00		Thread Tension Release Wire	실늑추기 케이블	1	1	
G-41	CTR-BB000700		Wire Holder Bracket	실늑추기 케이블잡이 브라켓	1	1	
G-42	DSC-BF008400		Screw [3/16"n=28, L=11]	실늑추기 케이블잡이 브라켓 집나사	2	2	
G-43	DTC-AH000800		Wire Holder	실늑추기 케이블잡이	2	2	
G-44	DSC-BF000600		Screw [3/16"n=28]	실늑추기 케이블잡이 집나사	4	4	
G-45	DSC-HZ001100		Cable Connecting Bolt	케이블 연결 볼트	1	1	
G-46	DSN-AA002400		Cable Connecting Nut A [3/16"n=32]	케이블 연결 너트 A	1	1	
G-47	PSN-AA001700		Cable Connecting Nut B [3/16"n=32]	케이블 연결 너트 B	1	1	
G-48	DSC-AC000400		Bolt [M6]	노루발 미세 조정 볼트	1	1	
G-49	PSN-AA001400		Nut [15/64"n=28]	노루발 미세 조정 너트	1	1	
G-50	CPB-BH000600		Finger Guard	안전가이드	1	1	
G-51	GP-001045-00		Presser Foot Lifter-A	누름대 올리기-A	(1)	(1)	
G-52	GP-001046-00		Presser Foot Minute Lifting Base	노루발 미세 상승 베이스	(1)	(1)	
G-53	SC-000095-00		Presser Foot Minute Lifting Control Screw	노루발 미세 상승 조정 나사	(1)	(1)	
G-54	SN-000014-00		Presser Foot Minute Lifting Control Nut	노루발 미세 상승 조정 너트	(1)	(1)	
G-55	DSC-BF008400		Screw [3/16"n=28, L=11]	노루발 미세 상승 베이스 집나사	(1)	(1)	
G-56	DSC-BJ000300		Screw [9/64"n=40]	누름대 올리기 고정나사	(1)	(1)	
G-57	DWS-AA003800		Washer	누름대 올리기 와셔	(1)	(1)	

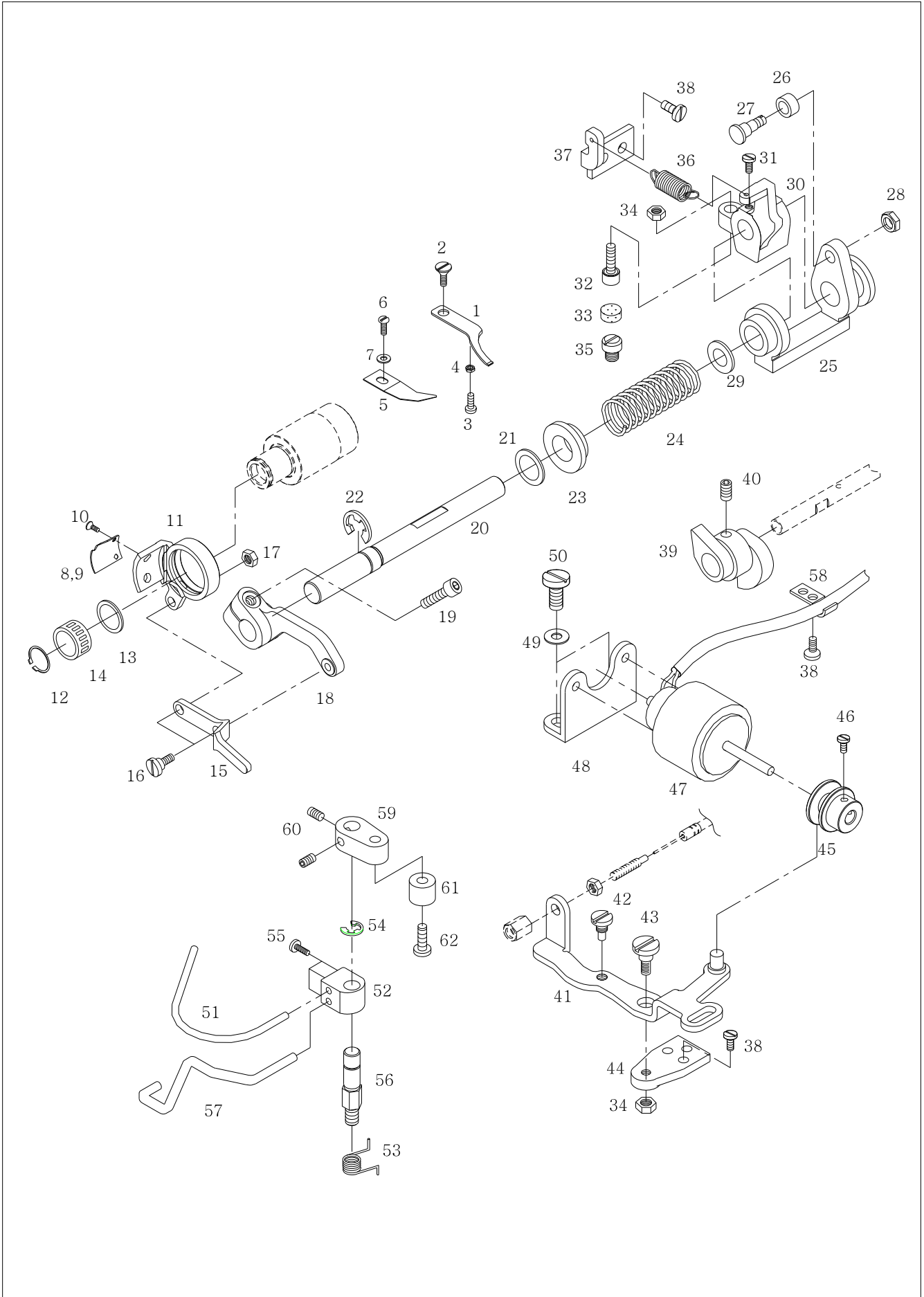




Ref. No.	Parts No.	Note	Name of Parts	품 명	Q'ty		Assembly No.
					G	B	
H-1	CLB-JJ000500		Oil Window	유창	1	1	
H-2	44-031G-300G		Oil Window Packing	유창 고무 패킹	1	1	
H-3	DSC-BA000900		Screw [9/64" n=44, L=5.5]	고정나사	4	4	
H-4	CLB-JB000600		Oil Receiver for Oil Window	유창 오일받이	1	1	
H-5	CLB-JP000100		Nipple	니플	7	7	
H-6	GP-000760-00		Oil Distributor A	오일 분배기 A	1	1	
H-7	GP-007191-00		Oil Distributor	오일 분배기	1	1	
H-8	GP-005053-02		Arm Oil Shield	암 유방판	1	1	
H-10	DSC-BJ001400		Screw [9/64" n=44]	암 유방판 고정나사	1	1	
H-11	CLB-JL007100		Oil Return Felt	면판환류 felt	1	1	
H-12	CLB-BG002200		Oil Return Hose Holder	환류 호스 잡이	1	1	
H-13	DSC-BF000600		Screw [3/16" n=28]	호스 잡이 고정나사	2	2	
H-14	CLB-JG000900		Hose [φ3×φ5, L=1200]	면판 환류 호스	1	1	
H-15	CLB-JG000900		Hose [φ3×φ5, L=400]	상축전봇심 오일공급 호스	1	1	
H-16	CLB-JG000900		Hose [φ3×φ5, L=20]	유창 호스	1	1	
H-17	CLB-JG000900		Hose [φ3×φ5, L=400]	유창 오일 배유 호스	1	1	
H-18	CLB-JG000900		Hose [φ3×φ5, L=200]	상축중봇심 배유 호스	1	1	
H-19	CLB-JG000900		Hose [φ3×φ5, L=30]	오일 배유 호스	1	1	
H-20	CLB-JG000900		Hose [φ3×φ5, L=700]	상축 오일 공급 호스	1	1	
H-21	CLB-JG000900		Hose [φ3×φ5, L=150]	하축 오일 공급 호스	1	1	
H-22	CLB-JG000900		Hose [φ3×φ5, L=70]	오일 공급 호스	1	1	
H-23	CLB-JG000900		Hose [φ3×φ5, L=40]	하축후봇심 호스	1	1	
H-24	CLB-JG000900		Hose [φ3×φ5, L=100]	들대후봇심 호스	1	1	
H-25	CLB-JG000900		Hose [φ3×φ5, L=200]	펌프 오일 호스A	1	1	
H-26	CLB-JG000900		Hose [φ3×φ5, L=220]	펌프 오일 호스B	1	1	
H-27	CLB-JG000900		Hose [φ3×φ5, L=240]	펌프 오일 호스C	1	1	
H-28	GP-001744-00		Pipe	하축 급유 파이프	1	1	
H-29	DTC-AH000800		Hose Holder	호스 잡이	1	1	
H-30	GP-001739-01		Bracket for Oil Filter	오일필터 브라켓	1	1	
H-31	DSC-BF003600		Screw [11/64" n=40, L=7]	고정나사	3	3	
H-32	GP-005905-00		Oil Filter Base	오일필터 베이스	1	1	
H-33	GP-006760-00		Oil Filter Cap	오일필터 마개	1	1	
H-34	GP-001748-00		Gasket for Gear Box Cover	기어박스 커버 가스켓	1	1	
H-35	GP-001747-01		Gear Box Cover	기어박스 커버	1	1	
H-36	GP-005912-00		Guide Plate for Gear Box Cover	기어박스 커버 가이드판	1	1	
H-37	DSC-BB001800		Screw [11/64" n=40]	접시머리 나사	1	1	
H-38	DSC-BF001000		Screw [11/64" n=40]	고정나사	1	1	
H-39	CLB-JD000900		Oil Wick	편심축 유심	2	2	
H-40	CLB-JD000300		Oil Wick	수평밀대 유심	1	1	
H-41	DPK-CB000400		Rubber Cap	고무 마개	2	2	
H-42	CLB-JH000600		Oil Terminal	오일터미널	1	1	
H-43	DPK-CA002200		Rubber	고무마개	1	1	
H-44	CLB-JG000900		Hose [φ3×φ5, L=250]	봇심오일배유호스	1	1	
H-45	CLB-BG000600		Holder for Oil Hose(A)	오일 호스 잡이(A)	1	1	
H-46	DSC-BF000600		Screw [3/64" n=28]	오일 호스 잡이(A) 첩나사	1	1	
H-47	AS-006031-00		Oil Filter Ass'y	오일 필터(조)	1Set	1Set	
H-48	PTC-AH000400		Cable Holder(10N)	케이블 잡이(10N)	1	1	
H-49	01-080S-9710		Cable Holder(4N)	케이블 잡이(4N)	1	1	

## Thread Trimmer Mechanism

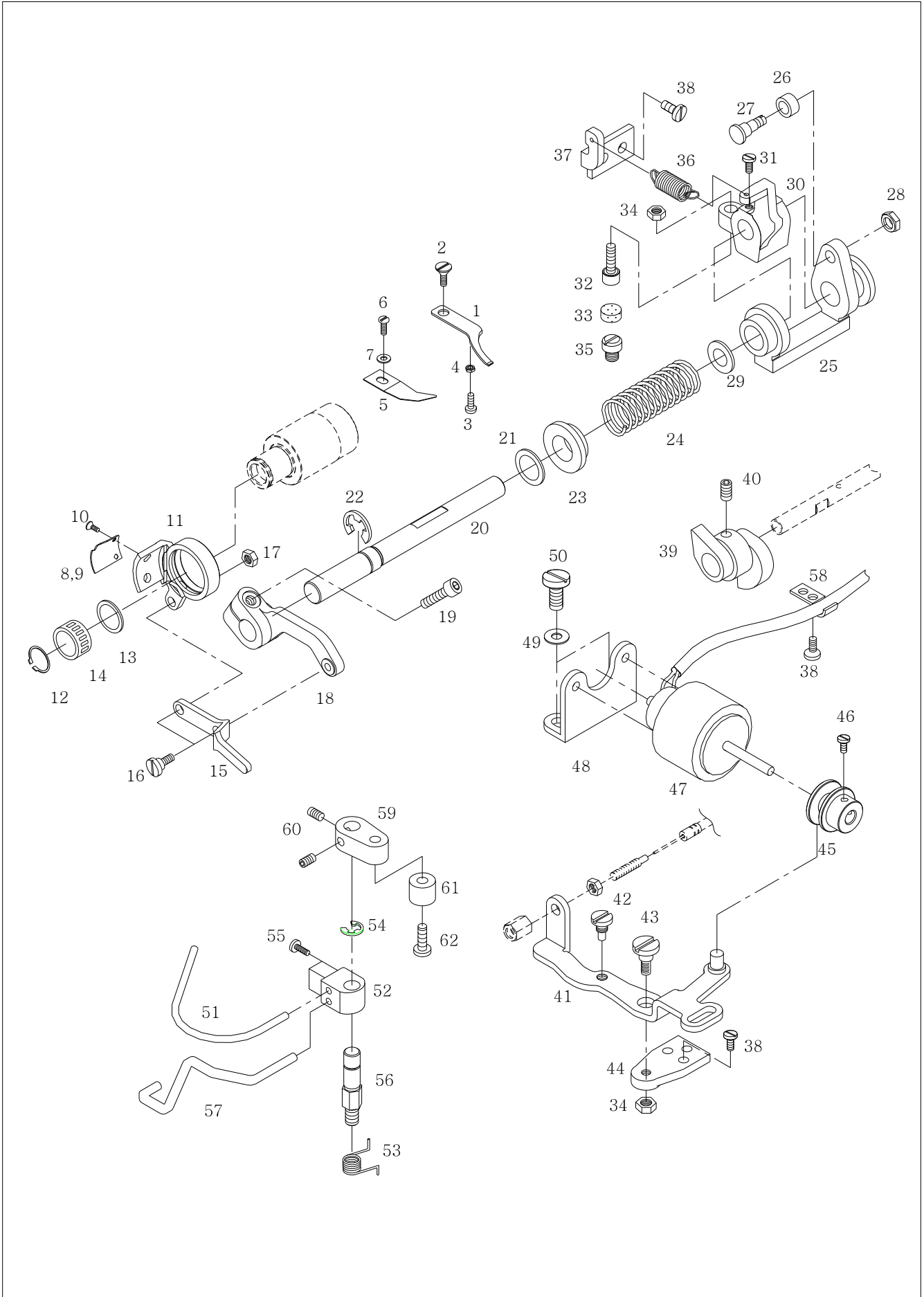
사절 관계



Ref. No.	Parts No.	Note	Name of Parts	품 명	Q'ty		Assembly No.
					G	B	
I-1	CTT-NB001100		Fixed Mes	고정메스(극잔사용)	1	1	
I-2	DSC-BB002000		Screw [9/64" n=40]	고정메스 찰나사	1	1	
I-3	DSC-BF006200		Screw [1/8" n=40]	고정메스 장력조절 나사	1	1	
I-4	DSN-AA001700		Nut [1/8" n=40]	고정메스 장력조절 너트	1	1	
I-5	CTT-BJ001100		Thread Retaining Plate	실 가리개	1	1	
I-6	DSC-BJ000200		Screw [11/64" n=40]	실 가리개 찰나사	1	1	
I-7	DWS-AA001100		Washer	실 가리개 와셔	1	1	
I-8	CTT-NA000600		Rotary Mes	회전 메스 806013	1		
I-9	CTT-NA001000		Rotary Mes	회전 메스 7AN414		1	
I-10	DSC-BB001400		Screw [11/64" n=40]	회전 메스 찰나사	2	2	
I-11	CTT-BF001000		Thread Trimming Holder	사절 홀더	1	1	
I-12	PSR-AA000100		Stop-Ring	스냅 링	1	1	
I-13	10-010W-2700		Washer of Thread Trimming Holder	사절 홀더 와셔	1	1	
I-14	PBR-BA001200		Needle Bearing	니들 베어링	1	1	
I-15	CTT-CA000800		Thread Trimming Lever Connecting Link	사절레버 연결링크	1	1	
I-16	DSC-FA005600		Stud Screw [11/64" n=40]	사절레버 연결링크 단나사	2	2	
I-17	DSN-AA000900		Nut [11/64" n=40]	사절레버 연결링크 너트	1	1	
I-18	CTT-CM001100		Thread Trimming Lever	사절레버	1	1	
I-19	PSC-AC000600		Screw [M6]	사절레버 찰나사	1	1	
I-20	CTT-KF000400		Thread Timming Shaft	사절축	1	1	
I-21	DWS-AA005200		Washer	사절축 와셔	1	1	
I-22	PSR-AC000100		E-ring [φ9]	E-링	1	1	
I-23	DCL-BA000600		Return Spring Guide Bushing	리턴 스프링 가이드 붓싱	1	1	
I-24	DSP-AA005600		Slide Arm Return Spring	슬라이드 아암 리턴 스프링	1	1	
I-25	CTT-CM001900		Slide Arm	슬라이드 아암	1	1	
I-26	CTT-CL000300		Roller	로올러	1	1	
I-27	DSC-FA013400		Stud Screw	로올러 단나사	1	1	
I-28	DSN-AA000600		Nut [3/16" n=32]	로올러 단나사 너트	1	1	
I-29	CTT-FB000200		Cushion Washer	쿠션 고무 와셔	1	1	
I-30	CTT-CB000700		Cam Follower Crank	사절캠 종동 크랭크	1	1	
I-31	DSC-BJ002000		Screw [1/4" n=40]	사절캠 종동 크랭크 찰나사	2	2	
I-32	DSC-BF007200		Stopper Screw [15/64" n=28]	스토퍼 쿠션 나사	1	1	
I-33	CTT-FD000200		Cushion Rubber	스토퍼 쿠션 고무	1	1	
I-34	DSN-AA000400		Nut [15/64" n=28]	너트	2	2	
I-35	DSC-BF012400		Thread Trimmer Stopper Screw	사절 스토퍼 나사	1	1	
I-36	DSP-AB001000		Spring	사절캠 종동 크랭크 스프링	1	1	
I-37	CTT-BB000800		Spring Holder	스프링 걸이	1	1	
I-38	DSC-BF000600		Screw [3/16" n=28]	찰나사	6	6	
I-39	CTT-DF000200		Thread Trimming Cam	사절캠	1	1	
I-40	DSC-CB000400		Screw [1/4" n=40]	사절캠 고정나사	2	2	
I-41	CTT-CM001800		Clutch Lever Ass'y	클러치 레버 (조)	1	1	
I-42	DSC-FH000200		Stud Screw	클러치 레버 작동핀 나사	1	1	
I-43	DSC-FD001100		Clutch Lever Hinge Screw	클러치 레버 단나사	1	1	
I-44	10-129A-257A		Base Plate	베이스 판	1	1	
I-45	CTT-BK000100		Solenoid Block	솔레노이드 구동블럭	1	1	
I-46	DSC-BA001000		Screw [11/64" n=40]	솔레노이드 구동블럭 찰나사	2	2	
I-47	STT100-00001		Thread Trimming Solenoid Ass'y	사절 솔레노이드 (조)	1	1	
I-48	CTT-BB002000		Base for Thread Trimming Solenoid	사절 솔레노이드 베이스	1	1	
I-49	PWS-CA000500		Washer	사절 솔레노이드 베이스 와셔	2	2	
I-50	DSC-BF000700		Screw [15/64" n=28]	사절 솔레노이드 베이스 찰나사	2	2	
I-51	CTT-BH000500		Bobbin Stopper Lever	보빈 스토퍼 레버	1	1	
I-52	CTT-BF000200		Bobbin Stopper Holder	보빈 스토퍼 홀더	1	1	
I-53	DSP-AC001700		Bobbin Stopper Spring	보빈 압력 스프링	1	1	
I-54	PSR-AC000500		E-ring [φ6]	E-링 [φ6]	1	1	
I-55	DSC-BF000100		Screw [1/8" n=44]	고정나사	4	4	
I-56	DSC-HC000800		Hinge Screw [15/64" n=28]	보빈 스토퍼 단나사	1	1	

## Thread Trimmer Mechanism

사절 관계

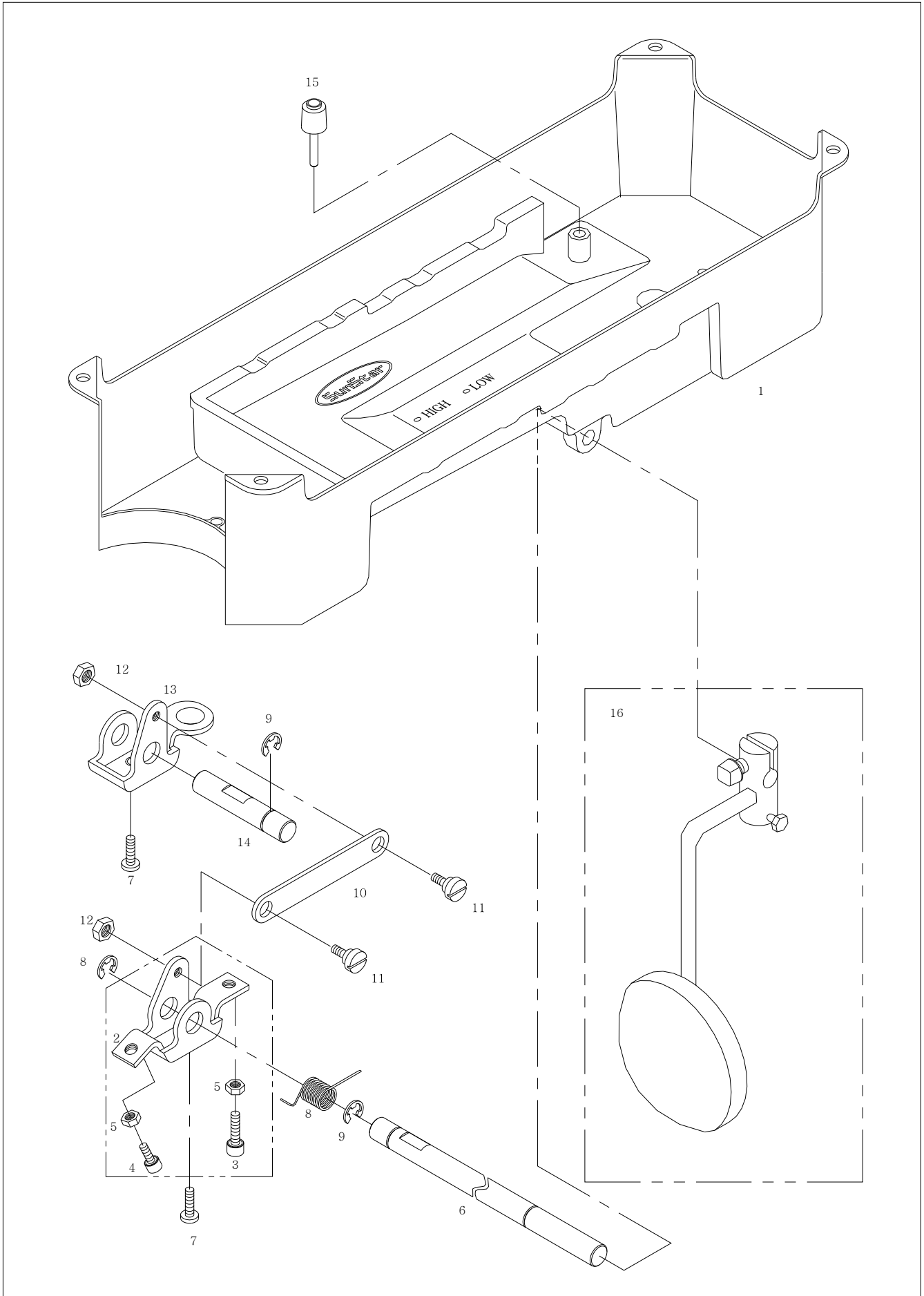




# J

## Oil Pan & Knee Lifting Mechanism

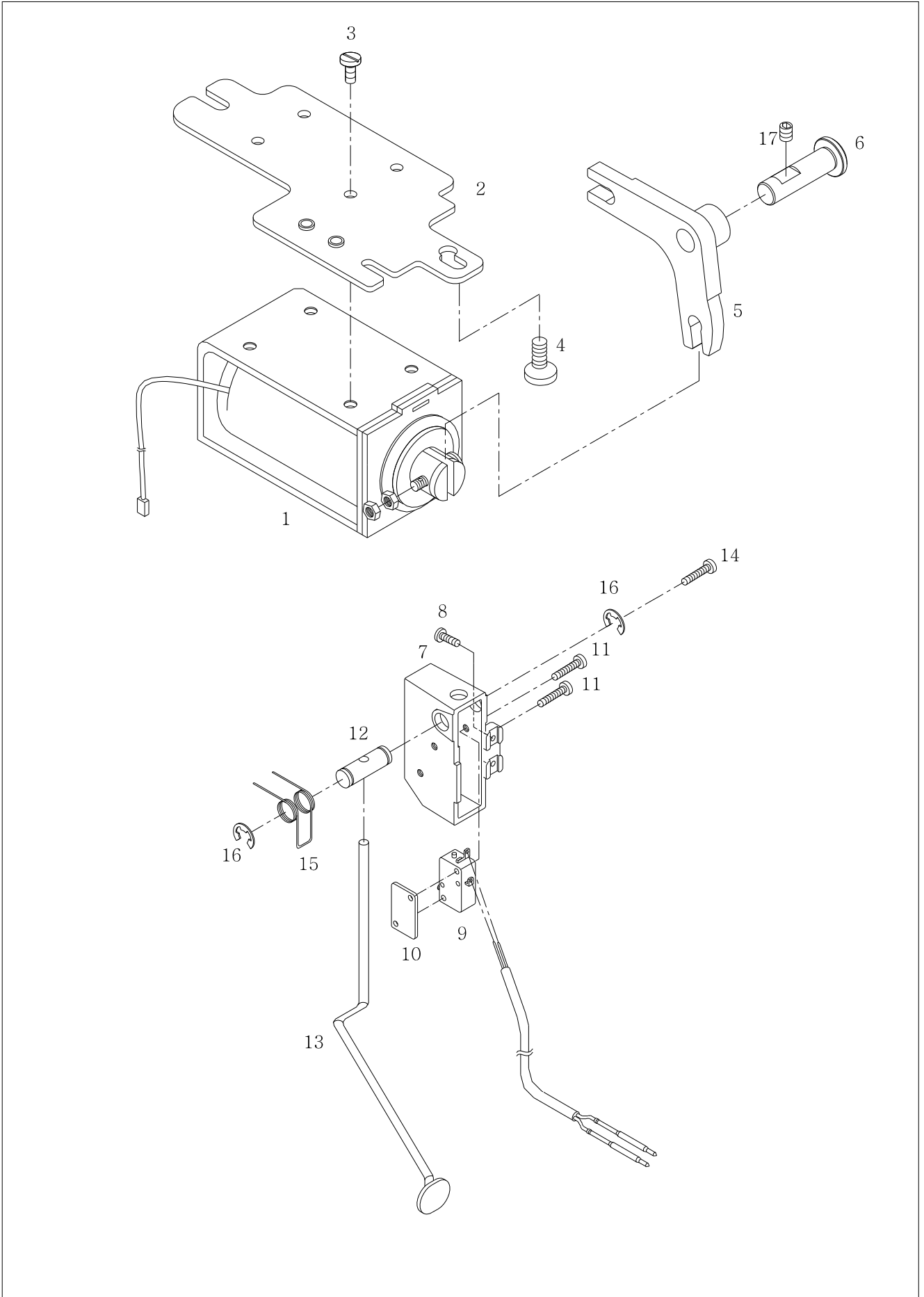
### 오일팬 및 무릎올림 관계



Ref. No.	Parts No.	Note	Name of Parts	품 명	Q'ty		Assembly No.
					G	B	
J-1	CST-JA001601		Oil Pan	오일팬	1	1	
J-2	CST-BB003100		Knee Lifting Controller-A	제어체-A	1	1	
J-3	DSC-AC000400		Screw A [M6×P1.0, L=38]	제어체-A 스토퍼 나사 A	1	1	
J-4	PSC-AC007200		Screw B [M6×P1.0, L=25]	제어체-A 스토퍼 나사 B	1	1	
J-5	PSN-AA001400		Nut [M6]	제어체-A 멈춤 너트	2	2	
J-6	CST-KC000500		Knee Lifting Controller Shaft-A	제어체축-A	1	1	
J-7	DSC-BA002700		Screw [15/64"n=28]	제어체축-A 고정 나사	2	2	
J-8	DSP-AC004600		Knee Lifting Controller Spring	제어체 스프링	1	1	
J-9	PSR-AC000100		E-ring φ9	E 링	3	3	
J-10	CST-CA000300		Knee Lifting Connecting Link	제어체 연결링크	1	1	
J-11	DSC-FD000300		Hinge Screw [D=7.24, H=3.3]	연결 룫트 힌지나사	2	2	
J-12	DSN-AA000400		Nut [15/64"n=28]	너트	2	2	
J-13	CST-BB003200		Knee Lifting Controller-B	제어체-B	1	1	
J-14	CST-KC000600		Knee Lifting Controller Shaft-B	제어체축-B	1	1	
J-15	CST-CR000300		Knee Lifting Bar Support Cap	무릎올림봉받침캡	1	1	
J-16	AST-PS000300		Knee Lifting Pad Ass'y	무릎올림 패드(조)	1	1	

## Reverse Button Mechanism

역진 버튼 관계



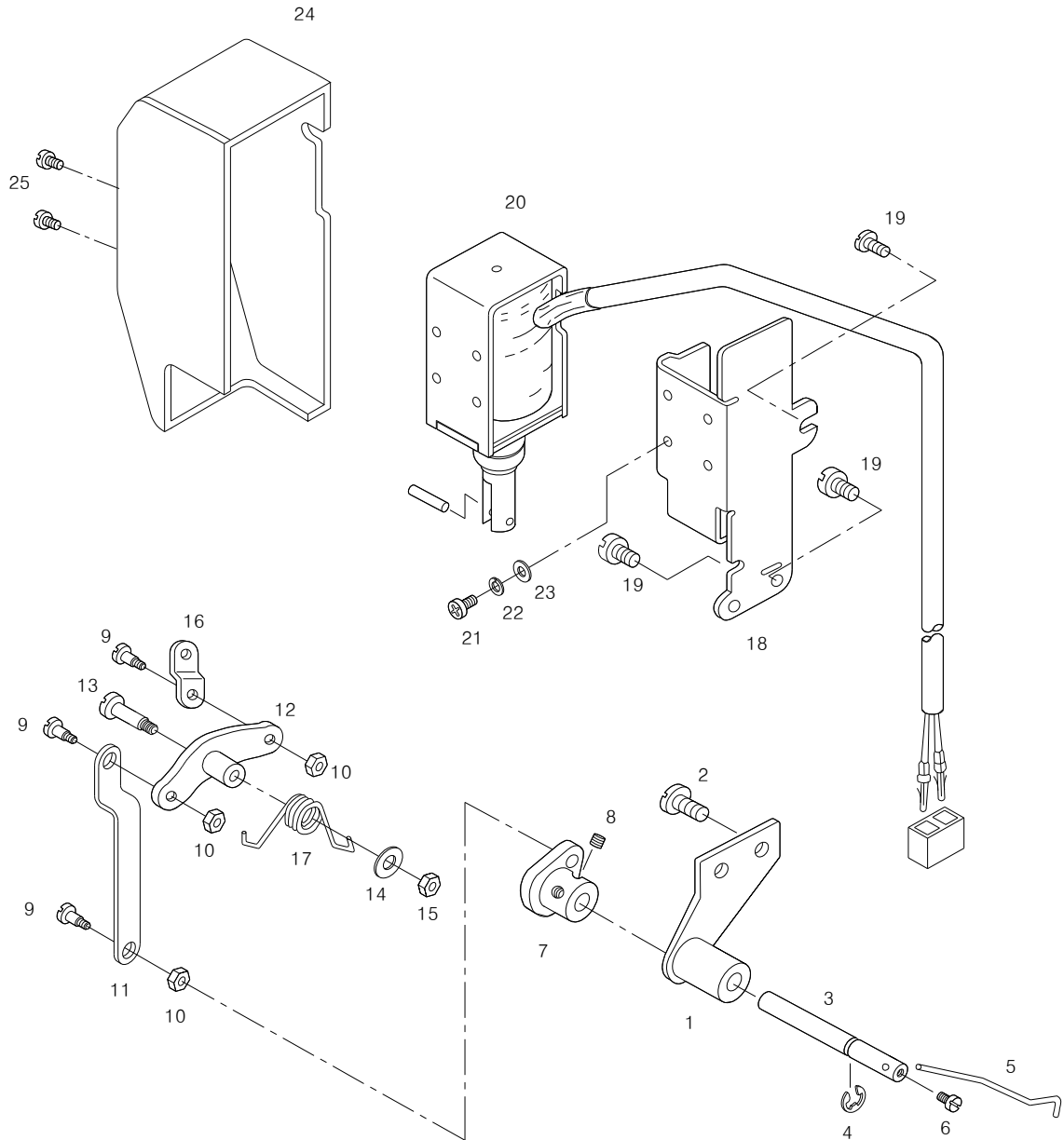






# Thread Wiper Mechanism

## 와이퍼 관계

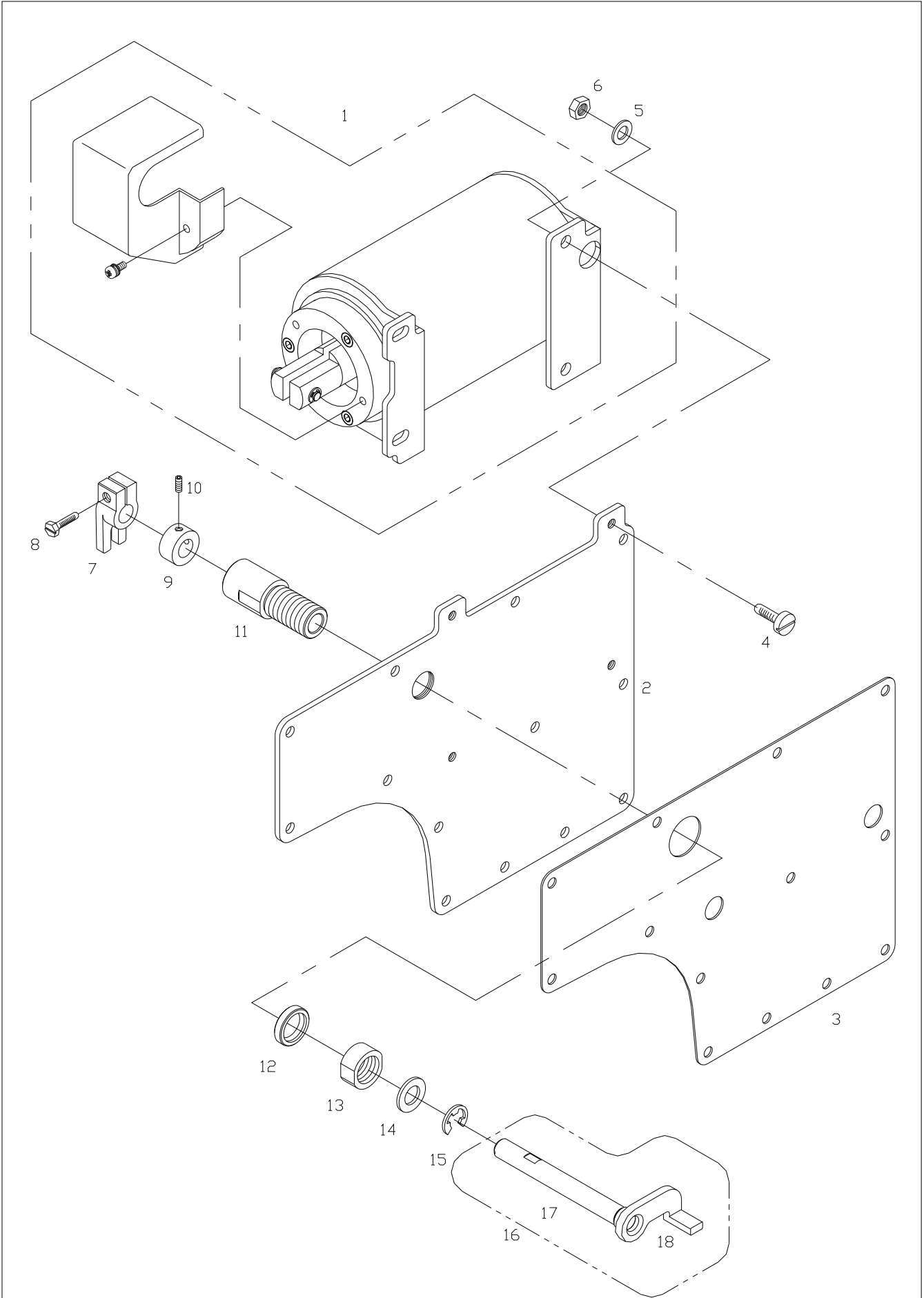




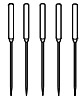
Ref. No.	Parts No.	Note	Name of Parts	품 명	Q'ty		Assembly No.
					G	B	
L-1	AWP-PS000800		Wiper Bracket Ass'y	와이퍼 브라켓 (조)	1	1	
L-2	DSC-BF000600		Screw [3/16"n=28]	와이퍼 브라켓 잠나사	2	2	
L-3	CWP-KC000201		Wiper Rotation Shaft	와이퍼 회전축	1	1	
L-4	PSR-AC000200		E-Ring (φ5)	E 링 (φ5)	1	1	
L-5	CWP-BH000200		Wiper	와이퍼	1	1	
L-6	DSC-BA000100		Screw [9/64"n=40]	와이퍼 잠나사	1	1	
L-7	AWP-PS000200		Wiper Crank Ass'y	와이퍼 크랭크 (조)	1	1	
L-8	PSC-CB000200		Screw [M4]	와이퍼 크랭크 잠나사	2	2	
L-9	DSC-FA000800		Hinge Screw	와이퍼 크랭크 힌지 나사	3	3	
L-10	DSN-AA001200		Nut [11/64"n=40]	와이퍼 크랭크 너트	3	3	
L-11	CWP-CA001300		Wiper Rod-A	와이퍼 로드-A	1	1	
L-12	AWP-PS000300		Wiper Driving Link Ass'y	와이퍼 요동링크 (조)	1	1	
L-13	DSC-FA000900		Hinge Screw	와이퍼 요동링크 힌지나사	1	1	
L-14	DWS-AA000600		Washer	스토퍼 와셔	1	1	
L-15	DSN-AA000600		Nut [3/16"n=32]	와이퍼 요동링크 너트	1	1	
L-16	CWP-CA000100		Wiper Solenoid Connection Link	와이퍼 솔레노이드 연결링크	1	1	
L-17	DSP-AC000200		Wiper Spring	와이퍼 스프링	1	1	
L-18	CWP-BB000100		Wiper Base	와이퍼 베이스	1	1	
L-19	DSC-BF000600		Screw [3/16"n=28]	와이퍼 베이스 잠나사	3	3	
L-20	DSD-AA001600		Wiper Solenoid Ass'y	와이퍼 솔레노이드 (조)	1	1	
L-21	PSC-BA000100		Screw [M3]	솔레노이드 부착 나사	4	4	
L-22	PWS-CA000100		Spring Washer	솔레노이드 부착 스프링 와셔	4	4	
L-23	PWS-AA000500		Washer	솔레노이드 부착 평 와셔	4	4	
L-24	CWP-LA000400		Wiper Cover	와이퍼 커버	1	1	
L-25	DSC-BA000100		Screw [9/64"n=40]	와이퍼 커버 잠나사	2	2	

## Auto Knee Lifter Solenoid Mechanism (Option)

자동무릎올림 관계 (선택사양)



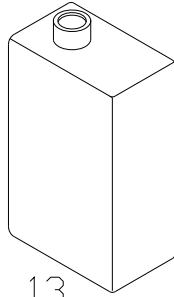




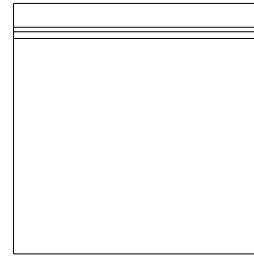
4,5



6



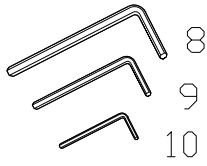
13



1



19



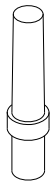
8

9

10



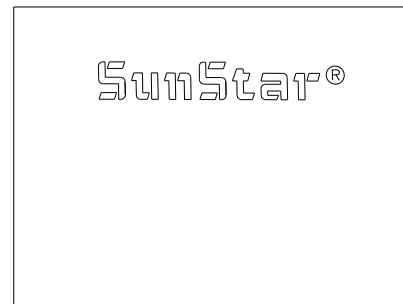
7



21

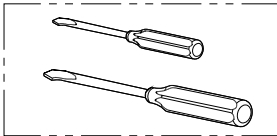


11

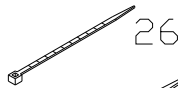


SunStar®

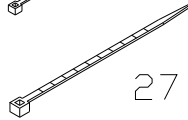
12



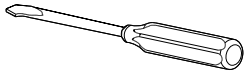
3



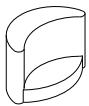
26



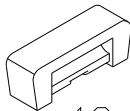
27



2



15



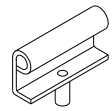
18



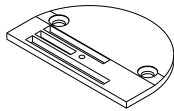
25



16



14



22,24

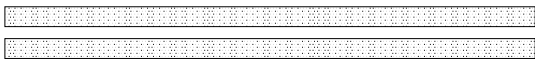


17

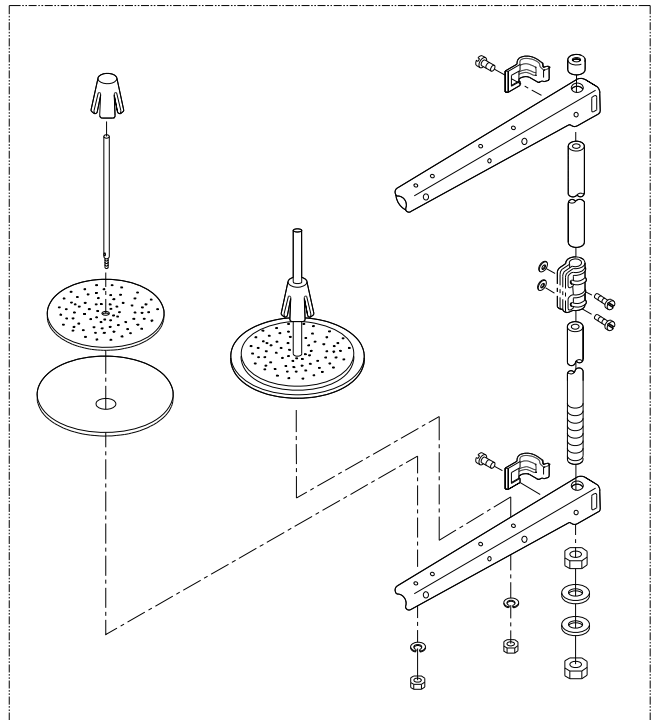


28

29



21





Ref. No.	Parts No.	Note	Name of Parts	품 명	Q'ty		Assembly No.
					G	B	
N-1	91-001C-1230		Accessory Bag	액세서리 백	1	1	
N-2	PTL-BA000100		Driver(Large)	드라이버(大)	1	1	
N-3	PTL-BA000200		Driver(Middle, Small)	드라이버(中,小)	1	1	
N-4	-		Needle (DB×1 #14)	바늘(일반용)	5		
N-5	-		Needle (DB×1 #21)	바늘(후물용)		5	
N-6	CHK-HB000600		Bobbin(AL)	보빈	4	4	
N-7	91-105C-2700		Spanner	고정메스 장력 조절 스페너	1	1	
N-8	PTL-AB000300		L Wrench(3mm)	L 렌치(3mm)	1	1	
N-9	PTL-AB000500		L Wrench(2.5mm)	L 렌치(2.5mm)	1	1	
N-10	PTL-AB000100		L Wrench(2mm)	L 렌치(2mm)	1	1	
N-11	CTT-NB001100		Fixed Mes	고정메스(극잔사용)	1	1	
N-12	91-108M-640L		Head Cover	미싱커버	1	1	
N-13	CAC-JB000100		Oil Tank	오일 탱크	1	1	
N-14	CST-BB002500		Head Hinge	힌지	2	2	
N-15	CST-FD002001		Head Support Rubber (A)	헤드 힌지고무(A)	2	2	
N-16	CST-FD002100		Head Support Rubber (B)	헤드 힌지고무(B)	2	2	
N-17	CST-FD002200		Head Support Rubber (C)	헤드 힌지고무(C)	4	4	
N-18	CST-FF000500		Rubber Cushion for Hinge	힌지식 고무	2	2	
N-19	-		Nail	못	10	10	
N-20	CST-CR000100		Head Rest	미싱 받침대	1	1	
N-21	CST-MF000100		Thread Stand Ass'y	실때꽃이 (組)	1	1	
N-22	CGA-GA000200		Needle Plate (A-Type)	침판(A형)	1		
N-24	CGA-GA001200		Needle Plate (BH-Type)	침판(BH형)		1	
N-25	CAC-JB000100		Oiller	오일 주유통	1	1	
N-26	-		Cable Tie(Small)	케이블 타이(소)	3	3	
N-27	-		Cable Tie(Middle)	케이블 타이(중)	2	2	
N-28	DTC-AK000300		Magnet	자석	1	1	
N-29	CAC-MG000300		Oil Pan Gasket	오일팬가스켓(조)	2	2	

# Index

Parts No.	Name of Parts	Page	Ref.No.	Parts No.	Name of Parts	Page	Ref.No.	Parts No.	Name of Parts	Page	Ref.No.
01-035P-1370	Machine Number Plate	7	A-44	CFA-CQ000301	Dial (5mm)	17	D-44	CLF-DC000700	Feed Lifting Cam	21	F-31
01-035P-7400	Pin	7	A-41	CFA-DF000200	Feed Regulator	17	D-21	CLF-KC000700	Feed Lifting Shaft	21	F-39
01-037R-1230	Rubber Cap	7	A-25	CFA-FZ000100	Rubber	17	D-40	CLF-KD000200	Feed Rocker Shaft(Micro Lubrication)	21	F-15
01-080S-9710	Cable Holder(4N)	25	H-49	CFA-KC000400	Feed Adjusting Shaft	17	D-13	CLF-KG000200	Feed Bar Crank Eccentric Shaft A	21	F-20
06-007A-257A	Feed Dog (General, 4 row)	21	F-25	CFA-KC000500	Reverse Feed Control Lever Shaft	17	D-32	CLF-KH000200	Feed Lifting Crank Eccentric Shaft A	21	F-30
08-001S-1230	Screw [15/64" n=28]	7	A-36	CFA-KJ000201	Feed Regulator Dial Shaft	17	D-42	CLF-LA000100	Feed Lifting Cam Plate	21	F-35
08-512A-250U	Bearing Bushing	11	B-31	CGA-GA000200	Needle Plate (A-Type, 3 row)	7	A-20	CLS-KH000500	Lower Shaft	19	E-1
10-010W-2700	Washer	27	I-13	CGA-GA000200	Needle Plate (A-Type)	39	N-22	CMB-BB005900	Bed Supporter-B	7	A-16
10-129A-257A	Base Plate	27	I-44	CGA-GA001200	Needle Plate (BH-Type, 4 row)	7	A-22	CMB-BB006200	Bed Supporter-A	7	A-14
12-012S-2700	Screw	33	K-11	CGA-GA001200	Needle Plate (BH-Type)	39	N-24	CMB-BB006400	Safety Switch Base	7	A-47
40-108A-1306	Thread Tension Disk	15	C-28	CGA-GB000501	Feed Dog (General, 3 row)	21	F-24	CMB-BJ002400	Guage Plate	7	A-17
41-101A-2300	Bobbin Winder Ass'y	15	C-1	CGA-GB001200	Feed Dog (Heavy, 4 row)	21	F-27	CMB-BJ003800	Safety Switch Sub Bracket	7	A-53
41S034S-306H	Thread Tension Control Cap Nut	15	C-24	CGA-GC000701	Presser Foot Ass'y (General)	23	G-9	CMB-BJ004200	Safety Switch Plate	7	A-48
44-031G-300G	Oil Window Packing	25	H-2	CGA-GC001900	Presser Foot Ass'y (Heavy-4row)	23	G-11	CMB-FC003900	Face Plate Gasket	7	A-3
46-102A-2300	Sync. Sensor	13	B-58	CHK-HA000700	Hook Ass'y (General)	19	E-12	CMB-FC004100	Rear Cover Gasket	7	A-10
91-001C-1230	Accessory Bag	39	N-1	CHK-HA000900	Hook Ass'y (Heavy)	19	E-13	CMB-FC004100	Rear Cover Gasket	37	M-3
91-105C-2700	Spanner	39	N-7	CHK-HB000600	Bobbin	19	E-14	CMB-HK000500	Arm Thread Guide	7	A-31
91-108M-640L	Head Cover	39	N-12	CHK-HB000600	Bobbin(AL)	39	N-6	CMB-HK001000	Thread Guide Plate	15	C-30
ABW-PS000200	Bobbin Winder Base Ass'y	15	C-2	CHK-HC000700	Bobbin Case Ass'y	19	E-15	CMB-HK001900	Face Plate Thread Guide	7	A-37
AMB-PS002300	Thread Tension Control Ass'y	15	C-23	CHK-HH000700	Inner Bobbin Stopper	19	E-16	CMB-HK002000	Upper Thread Guide Pin	7	A-26
APM-PS000700	Presser Bar Lifter Link Ass'y	23	G-18	CLB-BG000600	Holder for Oil Hose(A)	25	H-45	CMB-HM000100	Thread Tension Adjusting Shaft	15	C-29
ARB-PS000301	Reverse Feed Control Lever Ass'y	33	K-13	CLB-BG002200	Oil Return Hose Holder	25	H-12	CMB-LA004300	Thread Take-up Lever Cover	7	A-7
AS-000240-00	Reverse Feed Lever Crank	17	D-35	CLB-BJ001700	Timing Pulley-Lower Oil Cover	7	A-45	CMB-LA010701	Motor Cover	7	A-12
AS-000252-02	Auto Knee Lifter Shaft Ass'y	37	M-16	CLB-BJ001800	Oil Plate	19	E-20	CMB-LA010801	Face Plate	7	A-2
AS-001571-00	Thread Tension Control Ass'y	7	A-28	CLB-CN000300	Piston	21	F-42	CMB-LA011200	Rear Cover	7	A-9
AS-001731-00	Thread Take-up Lever Ass'y (General)	11	B-26	CLB-JB000600	Oil Receiver	25	H-4	CMB-LB004400	Slide Plate Ass'y	7	A-19
AS-001732-00	Thread Take-up Lever Ass'y (Heavy)	11	B-27	CLB-JC000500	Feed Lifting Shaft Bushing(Middle) Pump	21	F-40	CMB-NB000100	Bobbin Winder Mes	15	C-32
AS-001750-01	Arm-Bed	7	A-1	CLB-JD000300	Oil Wick	25	H-40	CNB-BF001200	Needle Bar Holder	11	B-40
AS-006031-00	Oil Filter Ass'y	25	H-47	CLB-JD000900	Oil Wick	25	H-39	CNB-BH000100	Thread Guide	11	B-48
AST-PS000300	Knee Lifting Pad Ass'y	31	J-16	CLB-JF000100	Nipple	21	F-41	CNB-BK000800	Slide Block	11	B-42
ATA-PS001300	Thread Tension Control Ass'y	7	A-33	CLB-JG000900	Hose [φ3×φ5, L=80]	17	D-29	CNB-HK000400	Needle Bar Thread Guide	11	B-51
ATA-PS001301	Thread Tension Control Ass'y (Heavy)	7	A-34	CLB-JG000900	Hose [φ3×φ5, L=1200]	25	H-14	CNB-KA001300	Needle Bar (General)	11	B-49
ATA-PS002401	Thread Tension Control Ass'y-Heavy	7	A-29	CLB-JG000900	Hose [φ3×φ5, L=400]	25	H-15	CNB-KA001400	Needle Bar (Heavy)	11	B-50
AWP-PS000200	Wiper Crank Ass'y	35	L-7	CLB-JG000900	Hose [φ3×φ5, L=20]	25	H-16	CPB-BF000400	Presser Bar Guide Bracket	23	G-13
AWP-PS000300	Wiper Driving Link Ass'y	35	L-12	CLB-JG000900	Hose [φ3×φ5, L=400]	25	H-17	CPB-BH000600	Finger Guard	23	G-50
AWP-PS000800	Wiper Bracket Ass'y	35	L-1	CLB-JG000900	Hose [φ3×φ5, L=200]	25	H-18	CPB-BJ000700	Thread Guide Plate	23	G-14
CAC-JB000100	Oil Tank	39	N-13	CLB-JG000900	Hose [φ3×φ5, L=30]	25	H-19	CPB-CM000300	Presser Lifter	23	G-23
CAC-JB000100	Oiler	39	N-25	CLB-JG000900	Hose [φ3×φ5, L=700]	25	H-20	CPB-DF000300	Presser Lifter Cam Shaft	23	G-21
CAC-MG000300	Oil Pan Gasket	39	N-29	CLB-JG000900	Hose [φ3×φ5, L=150]	25	H-21	CPB-KB000700	Presser Bar	23	G-7
CBW-BA000500	Bobbin Winder Action Body	15	C-4	CLB-JG000900	Hose [φ3×φ5, L=70]	25	H-22	CPB-KC000300	Presser Guide Bar	23	G-4
CBW-BH000200	Bobbin Stopper	15	C-10	CLB-JG000900	Hose [φ3×φ5, L=40]	25	H-23	CPM-BH000600	Presser Lifter Connect Bar	23	G-26
CBW-BJ000100	Thread Winder Action Plate	15	C-22	CLB-JG000900	Hose [φ3×φ5, L=100]	25	H-24	CPM-BJ001000	Knee Lifting Bar Guide	23	G-33
CBW-BJ000400	Bobbin Winder Adjusting Plate	15	C-11	CLB-JG000900	Hose [φ3×φ5, L=200]	25	H-25	CPM-CA001000	Knee Lifting Link	23	G-27
CBW-BN000200	Bobbin Stand	15	C-9	CLB-JG000900	Hose [φ3×φ5, L=220]	25	H-26	CPM-CM000900	Presser Bar Lifter Lever	23	G-19
CBW-CM000200	Bobbin Winder Lever	15	C-14	CLB-JG000900	Hose [φ3×φ5, L=240]	25	H-27	CPM-CR000400	Knee Lifting Bar	23	G-31
CBW-CP000200	Bobbin Winder Action Pulley	15	C-5	CLB-JG000900	Hose [φ3×φ5, L=250]	25	H-44	CRB-FD000100	Insulated Rubber	33	K-10
CBW-DZ000100	Thread Winder Adjusting Cam	15	C-19	CLB-JH000600	Oil Terminal	25	H-42	CRB-LC000100	Reverse Button Case	33	K-7
CBW-FA000200	Bobbin Winder Shaft Rubber Ring	15	C-8	CLB-JJ000500	Oil Window	25	H-1	CST-BB002500	Head Hinge	39	N-14
CBW-FA000300	Bobbin Winder Action Ring	15	C-7	CLB-JL001600	Upper Shaft Felt	11	B-4	CST-BB003100	Knee Lifting Controller-A	31	J-2
CBW-KC000100	Bobbin Winder Lever Shaft	15	C-16	CLB-JL001600	Feed Lifting Shaft Felt	21	F-48	CST-BB003200	Knee Lifting Controller-B	31	J-13
CBW-KC000300	Bobbin Winder Driving Shaft	15	C-3	CLB-JL002400	Oil Wick	19	E-3	CST-CA000300	Knee Lifting Connecting Link	31	J-10
CFA-BJ000900	Reverse Feed Solenoid Base	33	K-2	CLB-JL007100	Oil Return Felt	25	H-11	CST-CR000100	Head Rest	39	N-20
CFA-BJ001000	Dial Shaft Eccentric Stopper	17	D-50	CLB-JP000100	Nipple	25	H-5	CST-CR000300	Knee Lifting Bar Support Cap	31	J-15
CFA-CA000700	Feed Link	17	D-1	CLF-BJ000100	Feed Bar	21	F-22	CST-FD0002001	Head Support Rubber (A)	39	N-15
CFA-CA000801	Feed Link Connecting Rod	17	D-7	CLF-BC001100	Feed Cam Plate	21	F-6	CST-FD002100	Head Support Rubber (B)	39	N-16
CFA-CA000700	Feed Adjusting Shaft Crank(Rear)	17	D-17	CLF-CA000600	Connecting Link, A	21	F-9	CST-FD002200	Head Support Rubber (C)	39	N-17
CFA-CB000800	Feed Adjusting Shaft Crank(Front)	17	D-8	CLF-CA000700	Connecting Link, B	21	F-10	CST-FF000500	Rubber Cushion for Hinge	39	N-18
CFA-CB000900	Reverse Feed Solenoid Crank	33	K-5	CLF-CB000900	Feed Bar Crank	21	F-19	CST-JA001601	Oil Pan	31	J-1
CFA-CC000600	Feed Regulator Rod	17	D-20	CLF-CB001000	Feed Lifting Crank	21	F-29	CST-KC000500	Knee Lifting Controller Shaft-A	31	J-6
CFA-CH000100	Eccentric Pin	17	D-25	CLF-CB001100	Feed Rocker Crank	21	F-12	CST-KC000600	Knee Lifting Controller Shaft-B	31	J-14
CFA-CL000200	Rubber	17	D-38	CLF-CC000600	Feed Cam Connecting Rod	21	F-5	CST-MF000100	Thread Stand Ass'y	39	N-21
CFA-CM000600	Reverse Feed Control Lever	17	D-30	CLF-DC000500	Feed Cam	21	F-1	CTA-BD000200	Spring Cover	15	C-27



# Index

Parts No.	Name of Parts	Page	Ref.No.	Parts No.	Name of Parts	Page	Ref.No.	Parts No.	Name of Parts	Page	Ref.No.
CTA-BJ000100	Spring Stopper	15	C-25	DBS-DA015400	Bushing(Rear)	21	F-46	DSC-BF000600	Screw [3/16" n=28]	7	A-8
CTH-CB001100	Thread Take-up Crank	11	B-32	DBS-DB003500	Bushing	15	C-35	DSC-BF000600	Screw [3/16"n=28]	23	G-44
CTH-CC000900	Needle Bar Crank Rod	11	B-37	DBS-DB003900	Bushing(Rear)	17	D-34	DSC-BF000600	Screw [3/16" n=28]	25	H-13
CTH-CJ001000	Needle Bar Crank(Heavy)	11	B-35	DBS-DB004000	Upper Shaft Bushing(Front)	11	B-11	DSC-BF000600	Screw [3/64" n=28]	25	H-46
CTH-HJ001400	Thread Take-up (Heavy)	11	B-29	DCL-AA000300	Feed Lifting Shaft Collar	21	F-38	DSC-BF000600	Screw [3/16" n=28]	27	I-38
CTR-BB000700	Wire Holder Bracket	23	G-41	DCL-AA001900	Lower Shaft Collar	19	E-7	DSC-BF000600	Screw [3/16"n=28]	33	K-8
CTR-CM000800	Thread Tension Release Plate	23	G-37	DCL-AA002300	Feed Regulator Collar	17	D-24	DSC-BF000600	Screw [3/16"n=28]	35	L-2
CTT-BB000800	Spring Holder	27	I-37	DCL-AA004900	Feed Rocker Shaft Collar	21	F-18	DSC-BF000600	Screw [3/16"n=28]	35	L-19
CTT-BB002000	Base	27	I-48	DCL-AA005000	Collar	37	M-9	DSC-BF000700	Screw [15/64" n=28, L=14]	7	A-15
CTT-BB002100	Bobbin Stopper Bracket	29	I-59	DCL-AA005300	Feed Adjusting Shaft Collar	17	D-16	DSC-BF000700	Screw [15/64"n=28, L=14]	17	D-11
CTT-BF000200	Bobbin Stopper Holder	27	I-52	DCL-AA005600	Upper Shaft Collar	11	B-13	DSC-BF000700	Screw [15/64" n=28]	27	I-50
CTT-BF001000	Thread Trimming Holder	27	I-11	DCL-AA005600	Thrust Collar[D=φ.94, W=8]	11	B-43	DSC-BF000700	Screw [15/64"n=28, L=14]	33	K-4
CTT-BH000400	Bobbin Stopper	29	I-57	DCL-BA000600	Return Spring Guide Bushing	27	I-23	DSC-BF000700	Screw [15/64"n=28]	37	M-4
CTT-BH000500	Bobbin Stopper Lever	27	I-51	DCL-BA000900	Spacer	23	G-2	DSC-BF001000	Screw [11/64"n=40]	19	E-17
CTT-BJ001100	Thread Retaining Plate	27	I-5	DGR-AB000900	Lower Shaft Gear A	19	E-4	DSC-BF001000	Screw [11/64" n=40]	25	H-38
CTT-BK000100	Solenoid Block	27	I-45	DGR-AB001000	Feed Lifting Gear Ass'y	21	F-45	DSC-BF001100	Screw [3/16"n=28]	37	M-8
CTT-CA000800	Lever Connecting Link	27	I-15	DMT-AA000400	Motor-Hollow	11	B-20	DSC-BF001200	Screw A [11/64"n=40, L=18]	23	G-15
CTT-CB000700	Cam Follower Crank	27	I-30	DPK-CA002200	Rubber	25	H-43	DSC-BF001600	Screw [9/64" n=40]	11	B-39
CTT-CL000300	Roller	27	I-26	DPK-CB000400	Rubber Cap	25	H-41	DSC-BF001700	Screw [11/64"n=40]	15	C-34
CTT-CM001100	Thread Trimming Lever	27	I-18	DPK-CB000800	Rubber Cap (S)	7	A-24	DSC-BF001800	Screw [1/8"n=40]	15	C-12
CTT-CM001800	Clutch Lever Ass'y	27	I-41	DPK-CB000900	Face Plate Rubber Cap (L)	7	A-5	DSC-BF001800	Screw [1/8"n=44]	19	E-21
CTT-CM001900	Slide Arm	27	I-25	DPK-CB002400	Rubber	7	A-55	DSC-BF001800	Screw [1/8"n=44, L=6]	21	F-28
CTT-DF000200	Thread Trimming Cam	27	I-39	DPK-CB002500	Rubber Cap	21	F-49	DSC-BF001900	Screw [3/16"n=28]	17	D-46
CTT-FB000200	Cushion Washer	27	I-29	DPK-CZ000200	Cap	7	A-35	DSC-BF003600	Screw [11/64" n=40]	7	A-54
CTT-FD000100	Stopper	29	I-61	DPL-BF000200	Timing Pulley-Upper (T5)	11	B-16	DSC-BF003600	Screw [11/64" n=40, L=7]	25	H-31
CTT-FD000200	Cushion Rubber	27	I-33	DPL-BF000300	Timing Pulley-Lower (T5)	21	F-47	DSC-BF003600	Screw [11/64"n=40, L=7]	33	K-3
CTT-KF000400	Thread Timing Shaft	27	I-20	DPN-AA003501	Reverse Button Actuator Pin	33	K-12	DSC-BF003700	Screw (A) [9/32" n=28, L=16]	11	B-7
CTT-NA000600	Rotary Mes	27	I-8	DPN-AA007700	Dial Pin	17	D-47	DSC-BF006200	Screw [1/8" n=40]	27	I-3
CTT-NA001000	Rotary Mes	27	I-9	DPN-AA007800	Reverse Feed Lever Crank Pin	17	D-37	DSC-BF007200	Stopper Screw [15/64" n=28]	27	I-32
CTT-NB001100	Fixed Mes	27	I-1	DPN-AA007900	Feed Cam Connecting Rod Pin	21	F-11	DSC-BF008400	Screw [3/16" n=28, L=11]	7	A-4
CTT-NB001100	Fixed Mes	39	N-11	DPN-AA008000	Feed Rocker Crank Pin	21	F-13	DSC-BF008400	Screw [3/16" n=28]	13	B-61
CUS-BA000200	Sync. Sensor Base	13	B-57	DPN-AA008300	Supporting Pin	23	G-39	DSC-BF008400	Screw [3/16"n=28, L=11]	23	G-42
CUS-BB001200	Sensor Bracket	13	B-59	DPN-AD006700	Feed Link Pin a	17	D-5	DSC-BF008400	Screw [3/16"n=28, L=11]	23	G-55
CUS-BJ000900	Sync. Sensor Slit	11	B-55	DPN-AD007000	Hinge Screw [D=φ.9.53, H=15]	33	K-6	DSC-BF010100	Screw B [9/64"n=40, L=9]	23	G-16
CUS-BJ001000	Link Cam Protection Plate	11	B-10	DPN-AD007300	Thread Take-up Crank Shaft	11	B-33	DSC-BF011800	Oil Seal Screw [3/16"n=32, L=14]	19	E-2
CUS-CF000400	Bobbin Winder Driving Wheel	11	B-14	DPN-BC002500	Feed Link Connecting Pin-A	17	D-2	DSC-BF012200	Screw [3/16"n=28, L=15.5]	17	D-36
CUS-CP000401	Pulley	11	B-24	DPN-BC002600	Feed Link Connecting Pin-B	17	D-3	DSC-BF012200	Screw [3/16"n=28, L=15.5]	21	F-14
CUS-DA001400	Link Cam	11	B-6	DSC-AC000400	Bolt [M6]	23	G-48	DSC-BF012400	Thread Trimmer Stopper Screw	27	I-35
CUS-FA000100	Oil Adjusting Rubber	11	B-5	DSC-AC000400	Screw A [M6×P1.0, L=38]	31	J-3	DSC-BF012500	Screw [15/64"n=28]	29	I-62
CUS-FZ000100	Cable Guide Rubber	13	B-62	DSC-BA000100	Screw [9/64" n=40]	7	A-32	DSC-BF012700	Piston Cap Screw	21	F-44
CUS-KC001500	Upper Shaft	11	B-1	DSC-BA000100	Screw [9/64"n=40]	35	L-6	DSC-BJ000200	Screw [11/16"n=40]	17	D-49
CWP-BB000100	Wiper Base	35	L-18	DSC-BA000100	Screw [9/64"n=40]	35	L-25	DSC-BJ000200	Screw [11/64" n=40]	27	I-6
CWP-BH000200	Wiper	35	L-5	DSC-BA000200	Screw [9/64"n=40, L=10.5]	23	G-12	DSC-BJ000300	Screw [9/64"n=40]	23	G-24
CWP-CA000100	Wiper Solenoid Connection Link	35	L-16	DSC-BA000300	Screw [11/64" n=40]	11	B-44	DSC-BJ000300	Screw [9/64"n=40]	23	G-56
CWP-CA001300	Wiper Rod-A	35	L-11	DSC-BA000900	Screw [9/64" n=44, L=5.5]	25	H-3	DSC-BJ001400	Screw [9/64" n=40]	7	A-46
CWP-KC000201	Wiper Rotation Shaft	35	L-3	DSC-BA001000	Screw [9/64" n=40]	11	B-41	DSC-BJ001400	Screw [9/64"n=40]	21	F-8
CWP-LA000400	Wiper Cover	35	L-24	DSC-BA001000	Screw [11/64"n=40]	21	F-21	DSC-BJ001400	Screw [9/64" n=44]	25	H-10
D{K-CB000200	Rubber Cap (M)	7	A-6	DSC-BA001000	Screw [11/64" n=40]	27	I-46	DSC-BJ002000	Screw [1/4" n=40]	27	I-31
DBS-DA012600	Needle Bar Bushing, Upper	11	B-45	DSC-BA001100	Screw [11/64"n=40]	33	K-14	DSC-BJ003800	Screw [15/64"n=28, L=10.5]	17	D-10
DBS-DA012900	Needle Bar Crank Rod Bushing	11	B-38	DSC-BA001400	Screw [3/16"n=32]	17	D-31	DSC-CA000100	Screw [15/64"n=28]	19	E-9
DBS-DA013000	Needle Bar Bushing, Lower (General)	11	B-46	DSC-BA001900	Screw [M3, L=10]	13	B-60	DSC-CA000100	Screw [15/64"n=28]	21	F-37
DBS-DA013100	Feed Adjusting Shaft Bushing(Front)	17	D-14	DSC-BA002400	Screw [M6]	11	B-56	DSC-CA000400	Screw [11/64"n=40]	37	M-10
DBS-DA013200	Feed Adjusting Shaft Bushing(Rear)	17	D-15	DSC-BA002500	Screw [11/64"n=40]	17	D-9	DSC-CA000600	Screw [11/64" n=40, L=4]	11	B-15
DBS-DA013800	Feed Rocker Shaft Bushing(Rear)	21	F-16	DSC-BA002700	Screw [15/64"n=28]	31	J-7	DSC-CA001600	Screw [11/64" n=40]	7	A-30
DBS-DA013900	Feed Rocker Shaft Bushing(Front)	21	F-17	DSC-BB001400	Screw [11/64" n=40]	27	I-10	DSC-CA002100	Screw (B) [9/32" n=28, L=16]	11	B-8
DBS-DA014000	Presser Bar Bushing	23	G-8	DSC-BB001800	Screw [11/64" n=40]	25	H-37	DSC-CB000300	Screw [11/64"n=40]	15	C-6
DBS-DA014800	Thread Take-up Bushing	11	B-30	DSC-BB002000	Screw [9/64" n=40]	27	I-2	DSC-CB000300	Screw [11/64" n=40]	29	I-60
DBS-DA014900	Needle Bar Bushing, Lower (Heavy)	11	B-47	DSC-BB003600	Screw [15/64"n=28]	7	A-58	DSC-CB000400	Screw [1/4" n=40, L=6]	11	B-9
DBS-DA015000	Upper Shaft Bushing(Middle)	11	B-12	DSC-BC000100	Screw [11/64" n=40]	7	A-18	DSC-CB000400	Screw [1/4"n=40, L=6]	17	D-12
DBS-DA015100	Lower Shaft Bushing(Rear)	19	E-6	DSC-BC000200	Screw [9/64"n=40]	15	C-33	DSC-CB000400	Screw [1/4"n=40]	19	E-5
DBS-DA015201	Lower Shaft Bushing(Front)	19	E-8	DSC-BF000100	Screw [1/8" n=44]	11	B-52	DSC-CB000400	Screw [1/4"n=40, L=6]	21	F-3
DBS-DA015300	Feed Lifting Shaft Bushing(Front)	21	F-36	DSC-BF000100	Screw [1/8" n=44]	27	I-55	DSC-CB000400	Screw [1/4" n=40]	27	I-40

# Index

Parts No.	Name of Parts	Page	Ref.No.	Parts No.	Name of Parts	Page	Ref.No.	Parts No.	Name of Parts	Page	Ref.No.
DSC-CB000500	Screw [15/64" n=28, L=7.5]	11	B-25	DWS-AA000400	Washer	15	C-18	PSC-AC006100	Screw [M5, L=15]	7	A-13
DSC-CB000500	Screw [15/64"n=28, L=7.5]	17	D-4	DWS-AA000600	Washer	11	B-23	PSC-AC007200	Screw B [M6×P1.0, L=25]	31	J-4
DSC-CB000500	Screw [15/64"n=28]	33	K-17	DWS-AA000600	Washer	35	L-14	PSC-BA000100	Screw [M3]	35	L-21
DSC-FA000700	Hinge Screw	23	G-30	DWS-AA001100	Washer	27	I-7	PSC-CB000100	Screw [M6, L=8]	11	B-19
DSC-FA000800	Hinge Screw	35	L-9	DWS-AA003800	Washer	7	A-56	PSC-CB000200	Screw [M4×P0.7]	15	C-15
DSC-FA000900	Hinge Screw	35	L-13	DWS-AA003800	Washer	23	G-25	PSC-CB000200	Screw [M4]	35	L-8
DSC-FA005600	Stud Screw [11/64" n=40]	27	I-16	DWS-AA003800	Washer	23	G-57	PSN-AA001400	Nut [15/64"n=28]	23	G-49
DSC-FA006000	Hinge Screw	23	G-29	DWS-AA005200	Washer	27	I-21	PSN-AA001400	Nut [M6]	31	J-5
DSC-FA006200	Stopper Stud Screw	17	D-41	DWS-AA011200	Washer	15	C-36	PSN-AA001700	Nut B [3/16"n=32]	23	G-47
DSC-FA012200	Safety Switch Hinge Screw	7	A-50	DWS-AA011300	Feed Lifting Cam Thrust Guide	21	F-33	PSR-AA000100	Stop-Ring	27	I-12
DSC-FA013400	Stud Screw	27	I-27	DWS-AA011400	Washer [φ7.1xφ11x1]	21	F-23	PSR-AB001100	C-Ring	13	B-63
DSC-FC000100	Hinge Screw	23	G-28	DWS-AA011800	Washer	37	M-14	PSR-AC000100	E-ring [φ9]	27	I-22
DSC-FD000300	Hinge Screw [D=7.24, H=3.3]	31	J-11	DWS-AA014400	Washer	37	M-5	PSR-AC000100	E-ring φ9	31	J-9
DSC-FD001100	Clutch Lever Hinge Screw	27	I-43	DWS-CA000100	Spring Washer	11	B-22	PSR-AC000100	E-ring [φ9]	33	K-16
DSC-FH000200	Stud Screw	27	I-42	DWS-CA000100	Washer	19	E-18	PSR-AC000200	E-ring [φ5]	15	C-17
DSC-FH000300	Hinge Screw [5/16"n=24]	23	G-17	GP-000760-00	Oil Distributor A	25	H-6	PSR-AC000200	E-Ring [φ5]	23	G-20
DSC-FH000401	Hinge Screw [5/16"n=24]	23	G-36	GP-000773-01	Auto Knee Lifter Shaft Bushing	37	M-11	PSR-AC000200	E-Ring (φ5)	35	L-4
DSC-GC000400	Hinge Screw	17	D-18	GP-000830-00	Feed Regulator Bushing	17	D-22	PSR-AC000500	E-ring [φ6]	27	I-54
DSC-HA000100	Screw [9/16"n=20]	23	G-1	GP-001045-00	Presser Foot Lifter-A	23	G-51	PSR-AC000600	E-ring [φ8]	37	M-15
DSC-HC000800	Hinge Screw [15/64" n=28]	27	I-56	GP-001046-00	Presser Foot Minute Lifting Base	23	G-52	PTC-AH000400	Cable Holder(10N)	25	H-48
DSC-HD001000	Screw	17	D-26	GP-001739-01	Bracket for Oil Filter	25	H-30	PTL-AB000100	L Wrench(2mm)	39	N-10
DSC-HZ001100	Cable Connecting Bolt	23	G-45	GP-001741-00	Back Cover	37	M-2	PTL-AB000300	L Wrench(3mm)	39	N-8
DSD-AA001600	Wiper Solenoid Ass'y	35	L-20	GP-001744-00	Pipe	25	H-28	PTL-AB000500	L Wrench(2.5mm)	39	N-9
DSD-AA002300	Reverse Feed Solenoid Ass'y	33	K-1	GP-001747-01	Gear Box Cover	25	H-35	PTL-BA000100	Driver(Large)	39	N-2
DSN-AA000100	Nut [11/64" n=40]	7	A-27	GP-001748-00	Gasket	25	H-34	PTL-BA000200	Driver(Middle, Small)	39	N-3
DSN-AA000400	Nut [15/64" n=28]	27	I-34	GP-001817-00	Reverse Button S/W Ass'y	33	K-9	PWS-AA000500	Washer	35	L-23
DSN-AA000400	Nut [15/64"n=28]	31	J-12	GP-001858-00	Safety Switch	7	A-51	PWS-AA002100	Washer	15	C-13
DSN-AA000500	Nut [1/4"n=40]	17	D-19	GP-002164-00	Thread Take-up (General)	11	B-28	PWS-CA000100	Spring Washer	35	L-22
DSN-AA000600	Nut [3/16" n=32]	27	I-28	GP-002167-00	Needle Bar Crank(General)	11	B-34	PWS-CA000400	Spring Washer	23	G-34
DSN-AA000600	Nut [3/16"n=32]	35	L-15	GP-005053-02	Arm Oil Shield	25	H-8	PWS-CA000500	Washer	27	I-49
DSN-AA000700	Nut	15	C-31	GP-005905-00	Oil Filter Base	25	H-32	SC-000095-00	Screw	23	G-53
DSN-AA000900	Nut [11/64"n=40]	17	D-27	GP-005912-00	Guide Plate	25	H-36	SC-000174-00	Screw [M2, L=12]	7	A-52
DSN-AA000900	Nut [11/64" n=40]	27	I-17	GP-006209-00	Model Mark (KM-2310G)	7	A-38	SC-0319-1230	Screw [3/16"n=32]	19	E-10
DSN-AA001200	Nut [11/64"n=40]	35	L-10	GP-006210-00	Model Mark (KM-2310B)	7	A-39	SL-000068-00	Auto Knee Lifter Solenoid Ass'y	37	M-1
DSN-AA001700	Nut [1/8" n=40]	27	I-4	GP-006760-00	Oil Filter Cap	25	H-33	SN-000014-00	Nut	23	G-54
DSN-AA002300	Nut [5/16"n=28]	23	G-35	GP-007191-00	Oil Distributor	25	H-7	SN-0121-4000	Nut [15/64"n=28]	37	M-6
DSN-AA002400	Nut A [3/16"n=32]	23	G-46	GP-009821-00	Warning Sticker A	7	A-57	STT100-00001	Thread Trimming Solenoid Ass'y	27	I-47
DSN-CC000100	Nut [9/16"n=20]	23	G-3	GP-013155-00	Auto Knee Lifter Shaft	37	M-17		Cable Tie(Middle)	39	N-27
DSN-CY000600	Nut	37	M-13	GP-013156-00	Auto Knee Lifter Bracket	37	M-18		Cable Tie(Small)	39	N-26
DSP-AA001600	Spring	19	E-11	GP-017452-00	Sticker	9	A-59		Caution Label	7	A-42
DSP-AA001700	Presser Spring	23	G-5	GP-021212-00	Thread Tension Release Wire	23	G-40		Nail	39	N-19
DSP-AA002800	Spring for Dial Pin	17	D-48	GP-023209-00	Crank	37	M-7		Needle (DB×1 #14)	11	B-53
DSP-AA005200	Spring	17	D-51	GP-034537-01	Oil Adjusting Pin	11	B-2		Needle (DB×1 #14)	39	N-4
DSP-AA005600	Slide Arm Return Spring	27	I-24	GP-044024-00	Rubber Cap	7	A-23		Needle (DB×1 #21)	11	B-54
DSP-AA006200	Presser Spring(Heavy)	23	G-6	PBR-AA007500	Needle Bearing	21	F-34		Needle (DB×1 #21)	39	N-5
DSP-AA006300	Piston Spring	21	F-43	PBR-BA000600	Bearing	11	B-36				
DSP-AB000100	Thread Winder Spring	15	C-21	PBR-BA001000	Needle Bearing	21	F-4				
DSP-AB001000	Spring	27	I-36	PBR-BA001200	Needle Bearing	27	I-14				
DSP-AB002900	Feed Adjusting Spring	17	D-28	PBS-BA000600	DU Bushing [φ12×φ14×20]	17	D-33				
DSP-AB003000	Reverse Feed Lever Return Spring	17	D-39	PBT-BF000200	Timing Belt(150-T5-550)	11	B-17				
DSP-AC000200	Wiper Spring	35	L-17	PCR-AD000200	Coupling	11	B-18				
DSP-AC001700	Bobbin Stopper Spring	27	I-53	PN-000104-00	Feed Link Pin b	17	D-6				
DSP-AC002100	Spring	23	G-38	PPK-AD000100	Oil Seal	37	M-12				
DSP-AC002200	Spring	33	K-15	PPK-BA000300	O-Ring (P5)	23	G-32				
DSP-AC004300	Safety Switch Spring	7	A-49	PPK-BA000400	O-Ring	11	B-3				
DSP-AC004600	Knee Lifting Controller Spring	31	J-8	PPK-BA000400	O-Ring	23	G-22				
DSP-BA001900	Thread Tension Control Spring	15	C-26	PPK-BA001600	O-Ring	17	D-43				
DTC-AH000200	Cord Holder "A"	7	A-11	PPK-BA001800	O-Ring for Bushing (P18)	17	D-23				
DTC-AH000800	Wire Holder	23	G-43	PPN-AF002100	Spring Pin	19	E-19				
DTC-AH000800	Hose Holder	25	H-29	PSC-AC000100	Screw [M5, L=25]	11	B-21				
DTC-AH000800	Cable Holder	29	I-58	PSC-AC000600	Screw [M6]	27	I-19				
DTC-AK000300	Magnet	39	N-28	PSC-AC001800	Screw [M4×P0.7]	15	C-20				

